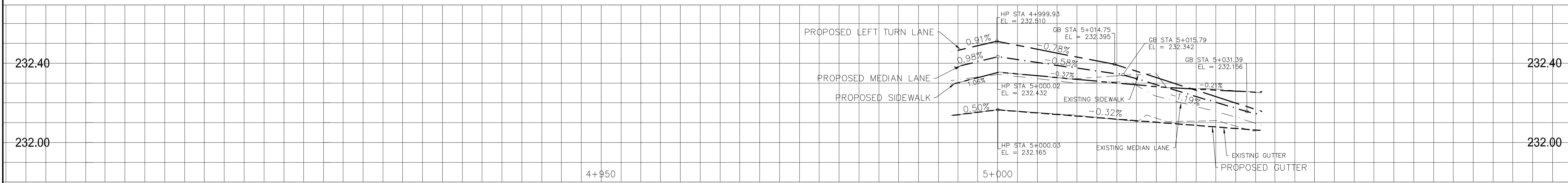
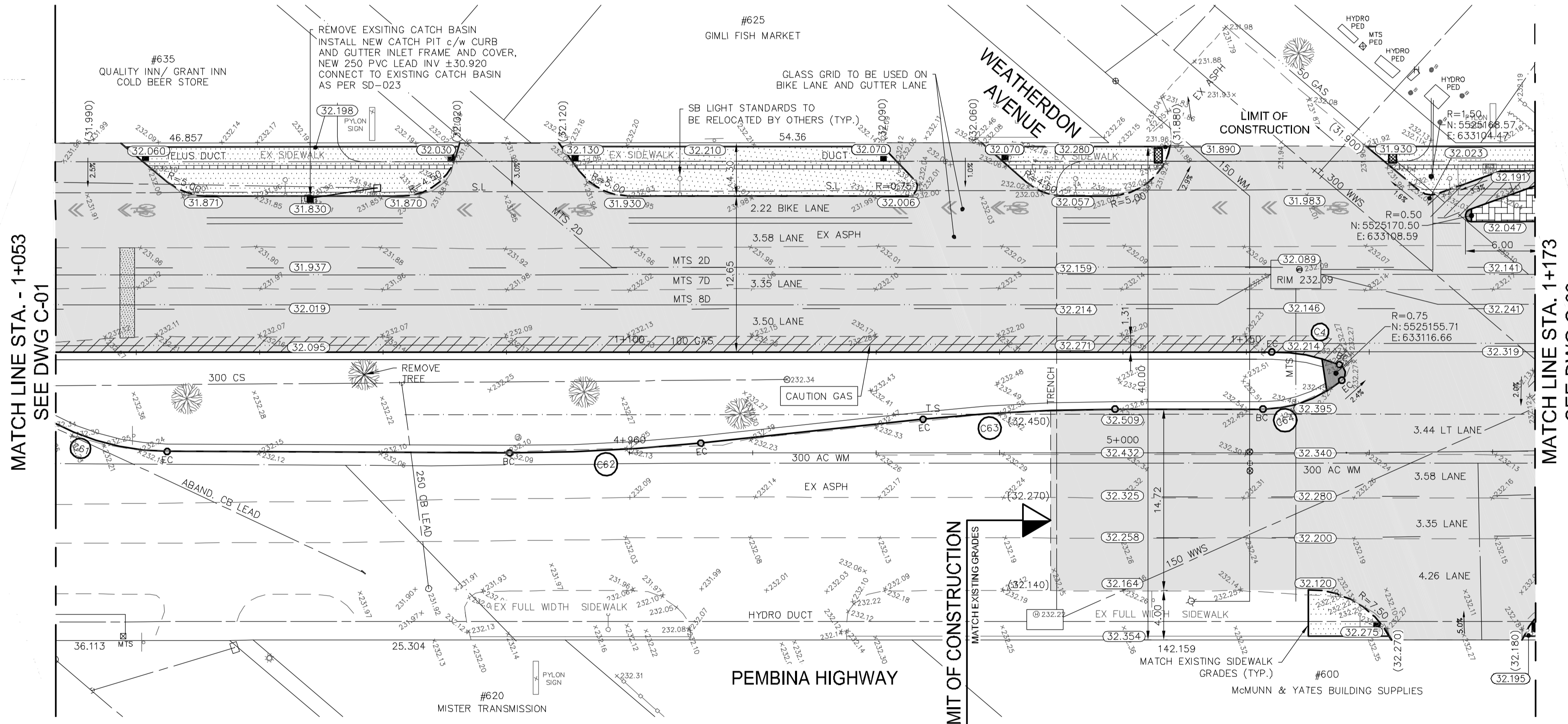


PEMBINA HIGHWAY SOUTHBOUND PROFILE



PEMBINA HIGHWAY NORTHBOUND PROFILE

Curve Table	
Curve #	Length
C4	Δ R T L C4 21°24'07" 15.000 2.83 5.60
	BC 5525156.209 633116.100
	EC 5525151.452 633113.200
C61	Δ R T L C61 39°04'52" 20.000 7.10 13.64
	BC 5525054.618 633080.398
	EC 5525064.794 633089.084
C62	Δ R T L C62 6°21'20" 140.000 7.77 15.53
	BC 5525090.734 633099.012
	EC 5525105.515 633103.748
C63	Δ R T L C63 6°07'40" 146.020 7.82 15.62
	BC 5525137.923 633113.044
	EC 5525123.049 633108.311
C64	Δ R T L C64 39°49'54" 10.000 3.62 6.95
	BC 5525149.140 633117.275
	EC 5525155.952 633117.365



EXISTING	LEGEND-PLAN	PROPOSED	EXISTING	LEGEND-PLAN	PROPOSED	EXISTING	LEGEND-PROFILE	PROPOSED
---	WATER MAIN	---	#111	CIVIC ADDRESS	---	---	---	---
---	LAND DRAINAGE SEWER	---	●	HYDRO POLE & LIGHT STANDARD	---	---	---	---
---	WASTE WATER SEWER	---	○	LIGHT STANDARD	---	---	---	---
---	HYDRO	---	HP	HYDRO POLE	---	---	---	---
---	M.T.S.	---	□	CURB RAMP	---	---	---	---
---	GAS	---	▨	DETECTABLE WARNING SURFACE TILE c/w RAMP	---	---	---	---
---	SIGNALS	---	---	EDGE OF SIDEWALK	---	---	---	---
○	MANHOLE	●	---	PROPERTY LINE	---	---	---	---
□	CATCH BASIN	▣	---	EDGE OF ASPHALT	---	---	---	---
△	CURB INLET	▽	---	MODIFIED BARRIER CURB	---	---	---	---
△	UTILITIES ADJUSTED	△	---	BARRIER CURB	---	---	---	---
J	PLUG	J	---	BARRIER CURB WITH SPLASH STRIP	---	---	---	---
◇	HYDRANT	◆	---	TRAFFIC SIGNAL	---	---	---	---
⊗	VALVE	⊗	---	SIDEWALK	---	---	---	---
⊕	CURB STOP	⊕	---	CONCRETE SLAB REPAIR	---	---	---	---
230.99	GROUND GRADE	---	---	ASPHALT	---	---	---	---
---	PAVEMENT GRADE	(31.000)	---	CONCRETE	---	---	---	---
---	LOT GRADE	[31.000]	---	INTERLOCKING PAVING STONES	---	---	---	---
---	ANCHOR	---	---	BULLNOSE	---	---	---	---
---	EXISTING	---	---	LEGEND-PLAN	---	---	---	---

FOR SECTIONS AND DETAILS REFER TO C-20

FOR TENDER PURPOSES ONLY

NOTE: These design documents are prepared solely for the use by the party with whom the design professional has entered into a contract and there are no representations of any kind made by the design professional to any party with whom the design professional has not entered into a contract.

LOCATIONS APPROVED UNDERGROUND STRUCTURES	
SIGNED BY:	DATE:
SUPV. UG STRUCTURES	
LOCATION OF UNDERGROUND STRUCTURES AS SHOWN ARE BASED ON THE BEST INFORMATION AVAILABLE BUT NO GUARANTEE IS GIVEN THAT ALL EXISTING UTILITIES ARE SHOWN OR THAT THE GIVEN LOCATIONS ARE EXACT CONFIRMATION OF EXISTENCE AND EXACT LOCATION OF ALL SERVICES MUST BE OBTAINED FROM THE INDIVIDUAL UTILITIES BEFORE PROCEEDING	

**MMM GROUP**

DESIGNED BY: SQ/JP  
DRAWN BY: HK/LT

CHECKED BY: VM/TP  
APPROVED BY: VM

ISSUED FOR TENDER: 16.MAY.16 VM  
ISSUED TO UNDERGROUND STRUCTURES: 16.MAY.16 VM  
ISSUED FOR CLIENT REVIEW: 28.APR.16 VM

NO. REVISIONS: 1  
DATE: MARCH 2016

MM Group Limited  
Suite 111 - 93 Lombard Ave  
Winnipeg, MB R3B 3B1  
t. 204.943.3178  
f. 204.943.4948  
www.mmgrouplimited.com

PROVINCE OF MANITOBA  
REGISTERED PROFESSIONAL ENGINEER  
V.M. MAROTI  
Member 30809

**THE CITY OF WINNIPEG**  
PUBLIC WORKS DEPARTMENT  
ENGINEERING DIVISION

PEMBINA HIGHWAY  
FROM CARTER AVENUE TO OSBORNE STREET

PAVEMENT REHABILITATION  
SOUTHBOUND STA. 1+053 - STA. 1+173

CITY DRAWINGS NUMBER: SHEET 02 OF 27  
BID NO. 386-2016

**METRIC**  
WHOLE NUMBERS INDICATE MILLIMETRES  
DECIMALIZED NUMBERS INDICATE METRES

**APEGM**  
Certificate of Authorization  
MMM Group Limited  
No. 4531

May 16, 2016 - 11:37am  
P:\5516001-5516009-5516006 - Pembina Hwy Pavement Rehab & Bike Lane\MM Drawings\Construction Drawings\5516006 C01-C12 Rehabilitation Issued for Tender 20160516.dwg - tab: STA. 1+080.00 - STA. 1+200.00