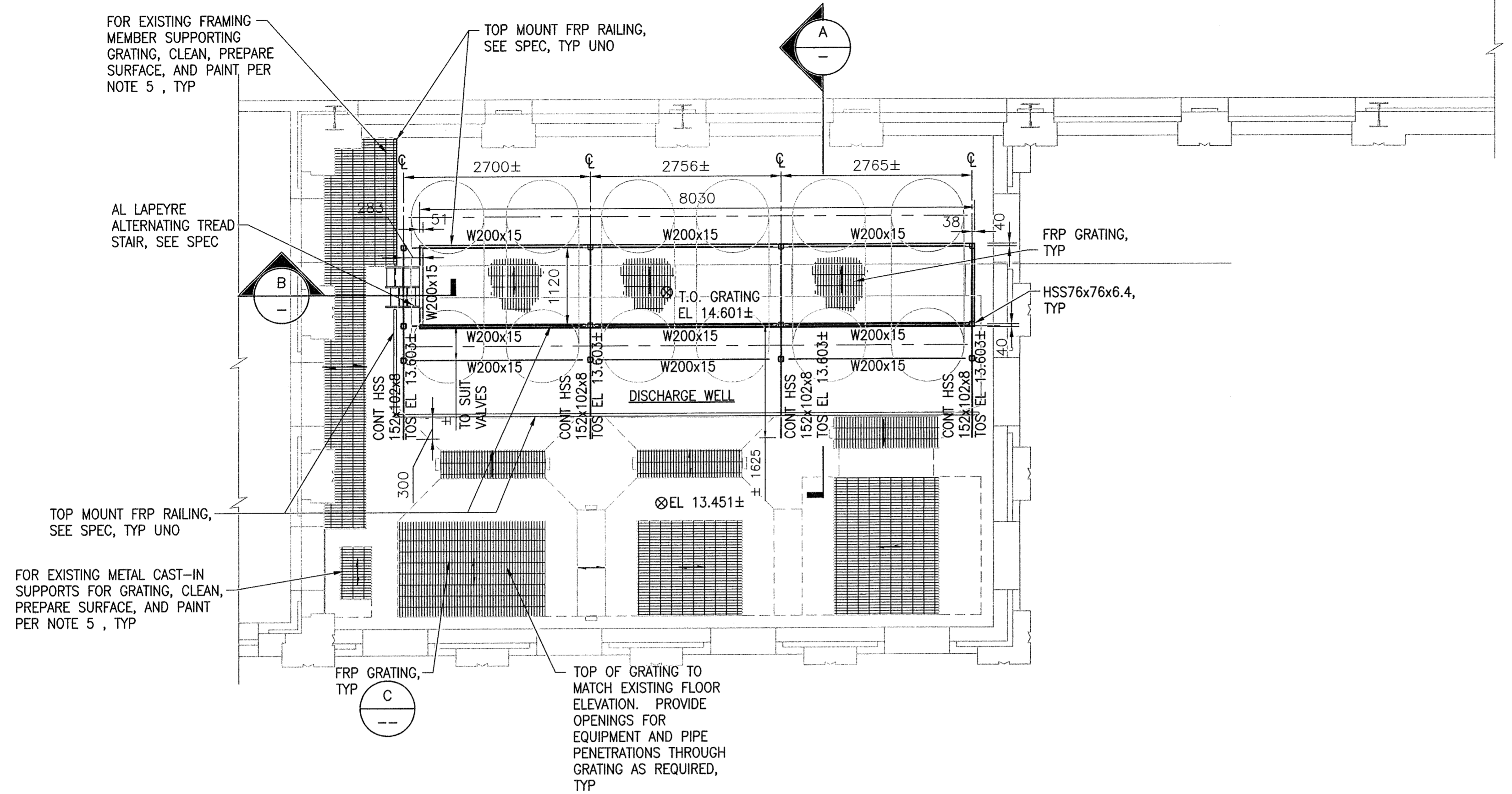
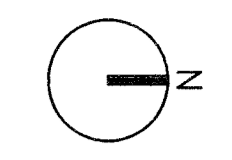
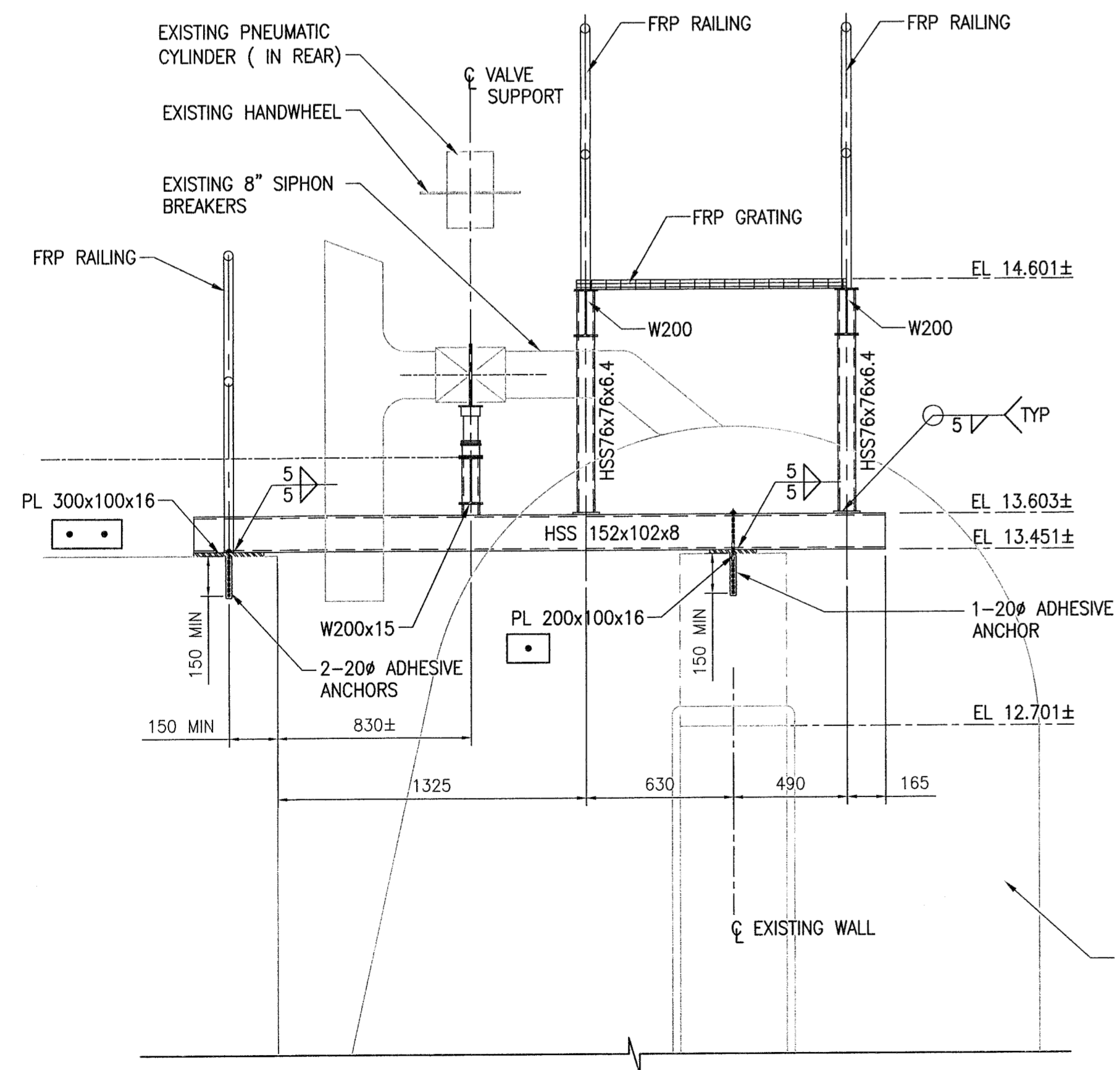


A1 SIZE - 594mm x 841mm

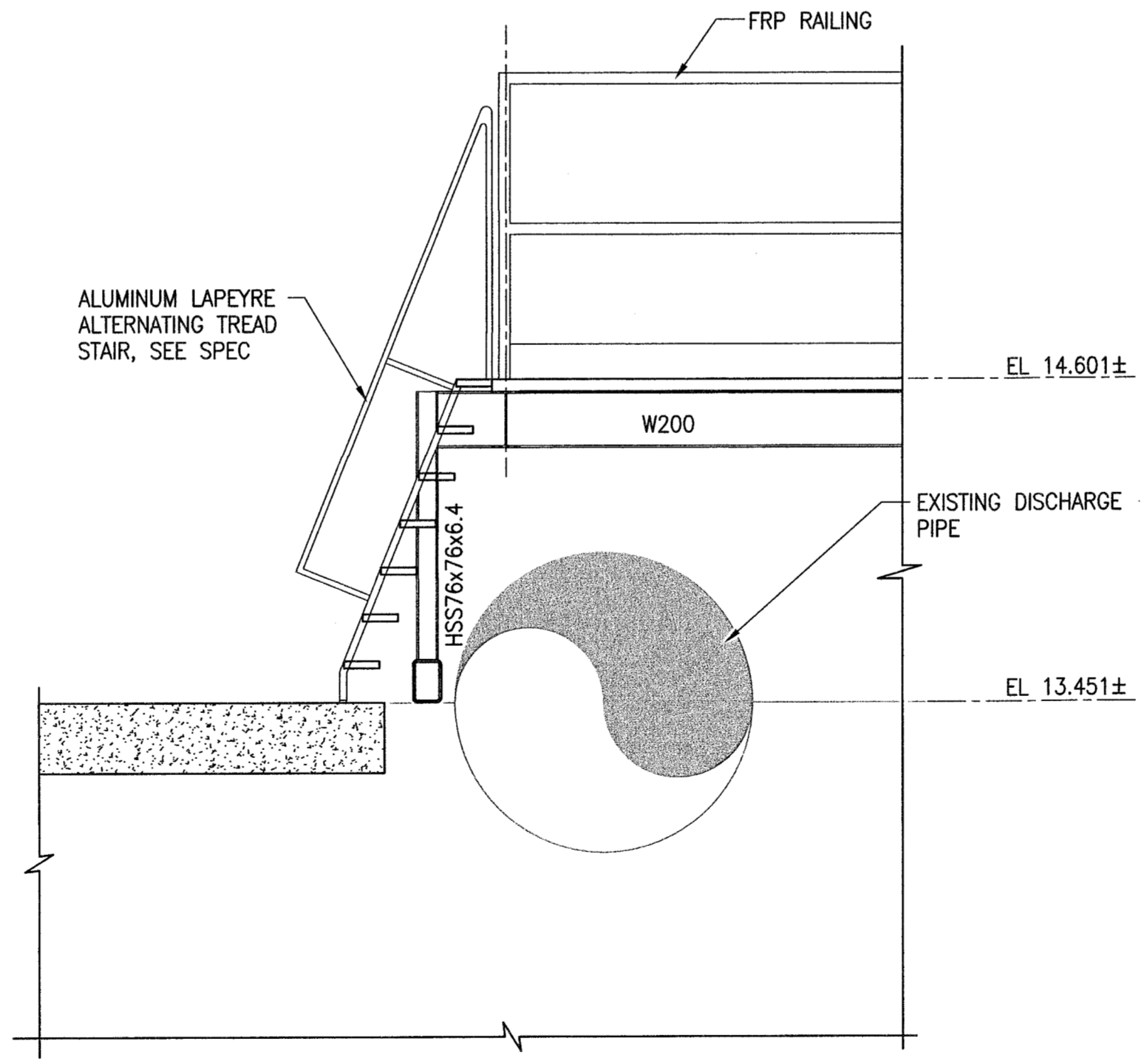


PLATFORM PLAN AT EL 16.000±
1:50

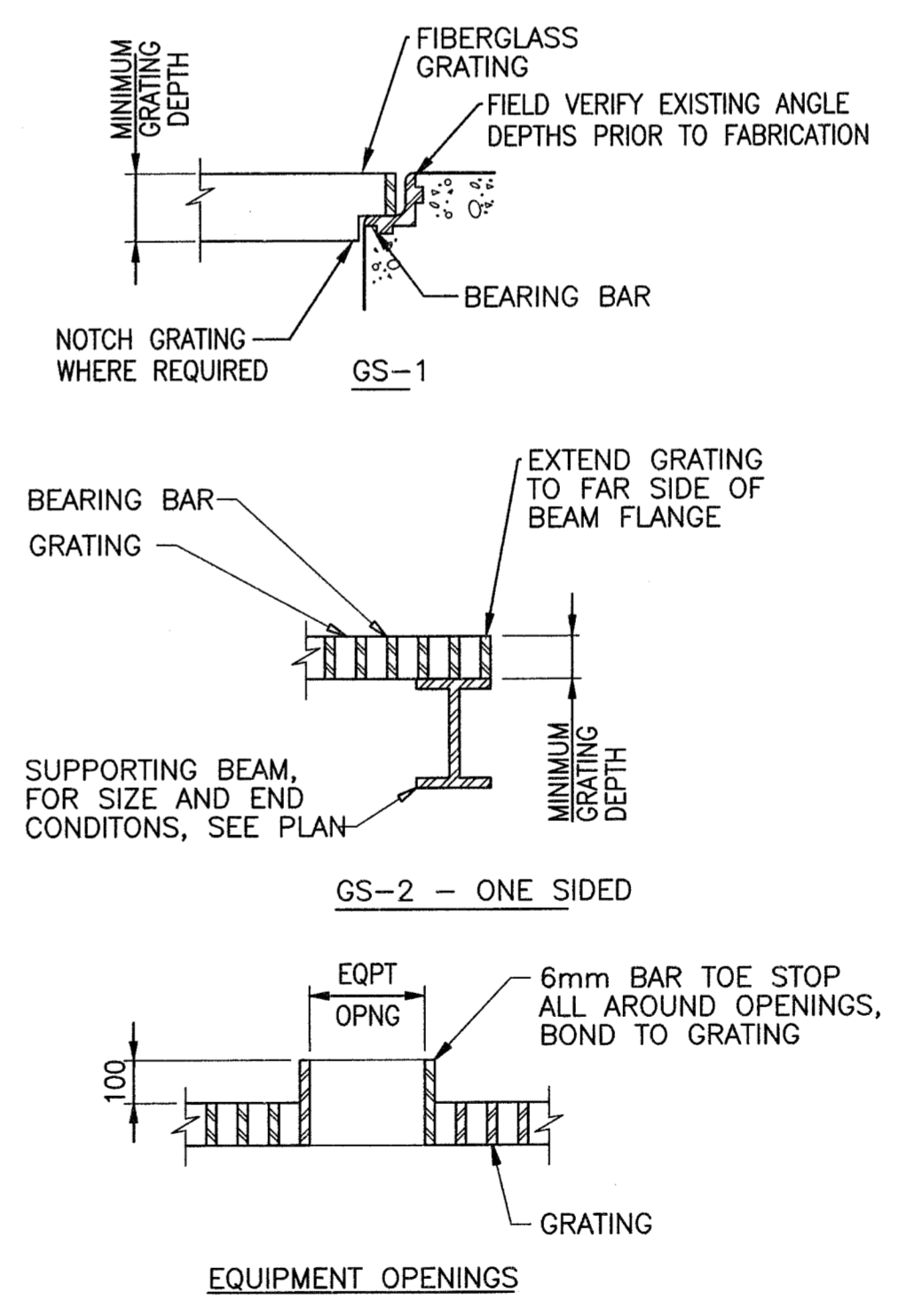
- NOTES:**
- LIVE LOAD ON PLATFORMS AND GRATING SHOWN: 5 kPa.
 - HOT-DIP GALVANIZE STEEL FRAMING, CONNECTIONS, ANCHORAGE AND APPURTENANCES AFTER FABRICATION.
 - TOP OF STEEL TO SUIT GRATING.
 - DISCHARGE WELL IS A CLASS 1, ZONE 1, GROUP D AREA. PLAN WORK ACCORDINGLY.
 - RESTORATION AND PAINTING:
 - REFERENCES:**
 - COMPLY WITH THE LATEST EDITION OF THE FOLLOWING STATUTES CODES AND STANDARDS AND ALL AMENDMENTS THERETO.
 - STEEL STRUCTURES PAINTING MANUAL VOL. 2 - SYSTEMS AND SPECIFICATIONS.
 - OCCUPATIONAL HEALTH AND SAFETY ACT, O.REG. 213/91 AND 692.
 - NATIONAL FIRE CODE OF CANADA.
 - SMAQMD (SOUTH COAST AIR QUALITY MANAGEMENT DISTRICT) RULE 1113 ARCHITECTURAL COATINGS.
 - QUALITY ASSURANCE:**
 - PRIOR TO COMMENCEMENT OF COATING OPERATION MEET AT SITE WITH MATERIAL SUPPLIER'S REPRESENTATIVE AND WITH THE ENGINEER TO REVIEW COATING WORK TO BE DONE AND FOLLOWING RELATED ITEMS:
 - EQUIPMENT USE AND SERVICING.
 - MATERIAL STORAGE AND APPLICATION TECHNIQUES.
 - SURFACE PREPERATION AND AMBIENT TEMPERATURE.
 - INSPECTION REQUIREMENTS.
 - SAFETY REQUIREMENTS DURING APPLICATION.
 - PROVIDING TEMPORARY PARTITIONS, AS REQUIRED, TO SEPERATE AREA OF APPLICATION FROM REMAINDER OF PROCESS OPERATION UNDER OPERATION WITHIN THE ROOM / SPACE.
 - MOCK UPS OR SAMPLES OF COATINGS IN HIGHLY CORROSIVE ENVIRONMENT.
 - MEET SCAQMD RULE 1113 ARCHITECTURAL COATINGS AND REGULATORY REQUIREMENTS LIMITING THE EMISSION OF VOLATILE ORGANIC COMPOUNDS.
 - COMPLY WITH INSTRUCTIONS ON PAINT MANUFACTURER'S SAFETY DATA SHEETS.
 - EXERCISE SPECIAL PRECAUTIONS OF SAFETY OF WORKMEN APPLYING COATING IN ENCLOSED AREAS BY MEETING REQUIREMENTS OUTLINED IN ONTARIO REGULATION 691 OCCUPATIONAL HEALTH AND SAFETY ACT AND REGULATIONS FOR CONSTRUCTION PROJECTS.
 - EXAMINATION:**
 - EXAMINE EXISTING SURFACES WHICH ARE TO BE REFINISHED .
 - REPORT SURFACES WHICH ARE DEFECTIVE, OR WHICH CANNOT BE PREPARED BY USUAL SANDING AND CLEANING. REPORT UNSATISFACTORY SITE AND ENVIRONMENTAL CONDITIONS.
 - COMMENCE WORK AFTER CORRECTIVE WORK HAS BEEN COMPLETED.
 - MATERIALS:**
 - PROVIDE COATING SYSTEM, SHER-GLASS LINING COATING SYSTEM BY SHERWIN WILLIAMS, SPECIFICALLY USED FOR HARSH CHEMICAL CONDITIONS WHICH CONSISTS OF THE FOLLOWINGS:
 - PRIME - ONE COAT OF DURAPLATE 235@4-6 MILS DFT. FOR GALVANIZED STEEL PRIME PER RECOMMENDATION OF MANUFACTURER OF COATING
 - FINISH - ONE COAT OF SHER-GLASS FF@8-12MILS DFT
 - APPLICATIONS:**
 - SNAD BLASTING EXISTING STEEL TO SSPC-SP 6.
 - APPLY PAINT MATERIALS FREE FROM DEFECTS.
 - MASK SURFACES WHERE NECESSARY, TO PREVENT CONTAMINATION OR MARRING OF ADJACENT MATERIAL, OR DIFFERENT PROTECTIVE COATING SYSTEM.
 - PREVENT OVERSPRAY ONTO ADJACENT SURFACES OR PROPERTIES.
 - DO NOT APPLY PAINT OVER SEALANT.



A SECTION
1:20



B SECTION
1:20

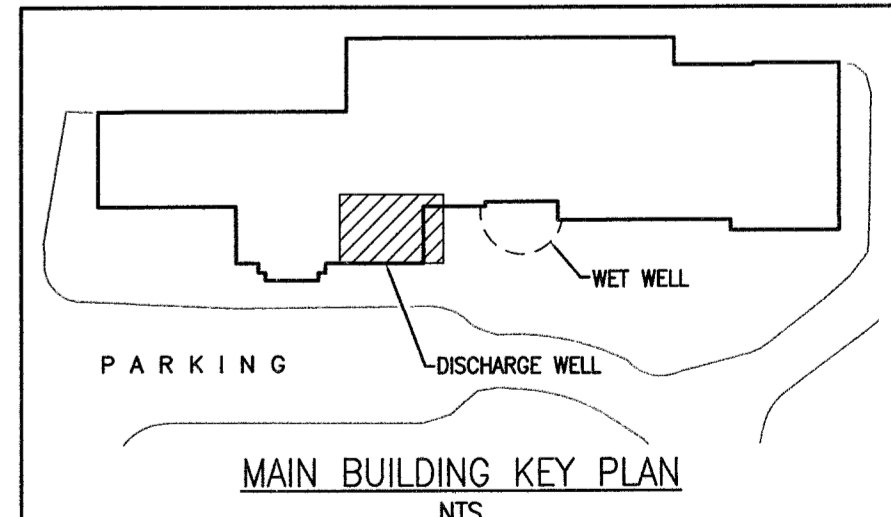


C STANDARD GRATING - FIBERGLASS
NTS

- GENERAL NOTES:**
- EXTEND GRATING CONTINUOUSLY OVER GATE GUIDES AND GATES.
 - NOTCH GRATING SUPPORTS AT GATES AS REQUIRED.
 - GRATING SPAN - SEE PLAN.
 - WIDTH OF GRATING SECTIONS SHALL NOT EXCEED 900mm.
 - SHOP DRAWINGS BASED ON FIELD DIMENSIONS SHALL BE SUBMITTED TO THE ENGINEER PRIOR TO FABRICATION.
 - UNLESS NOTED OTHERWISE ON PLANS, MINIMUM GRATING THICKNESS SHALL BE AS TABULATED IN TABLE BELOW
 - DESIGN LL = 5.0 kPa
 - PROVIDE SST GRATING FASTENERS AS REQUIRED.
 - THE HORIZONTAL CLEARANCE BETWEEN THE GRATING AND GRATING SUPPORTS SHALL NOT BE LESS THAN 6mm NOR GREATER THAN 13mm.
 - ALL GRATING SECTIONS, WHEN IN PLACE, SHALL ALWAYS BE FIRMLY ANCHORED TO THEIR SUPPORTS.

FOOT TRAFFIC		
MAXIMUM SPAN	MINIMUM GRATING DEPTH	* GRATING TYPE
1050	40	M OR P
1200	40	M OR P
1350	40	M OR P
1500	50	P
1650	50	P

* M = MOLDED GRATING
P = PULTRUDED GRATING



MAIN BUILDING KEY PLAN
NTS



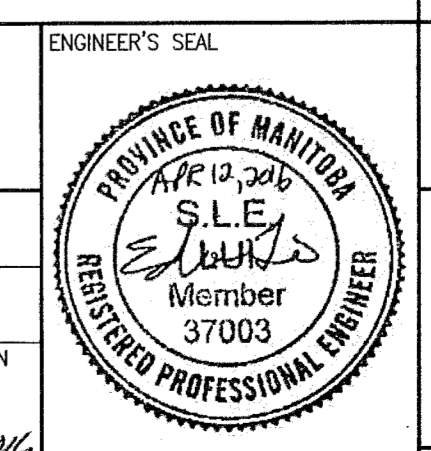
NO.	REVISIONS	DATE	DESIGN	CHECK
0	ISSUED FOR TENDER	04/2016	JBC	E.L.

ch2m

DESIGNED BY: E. LUI
DRAWN BY: C. RYNARD
SCALE: N.T.S.
DATE: April 13, 2016

CHECKED BY: R. PARIKH
APPROVED BY: [Signature]
ISSUED FOR CONSTRUCTION BY: [Signature]
DATE: APRIL 13, 2016

CONSULTANT NO.: 390903



THE CITY OF WINNIPEG
WATER AND WASTE DEPARTMENT

NORTH END SEWAGE TREATMENT PLANT (NEWPCC)
HEADEND DISCHARGE WELL STRUCTURAL UPGRADES
STRUCTURAL
DISCHARGE WELL
PLATFORM PLAN AND SECTIONS

CITY DRAWING NUMBER: 1-0101M-S0012
SHEET: 001
REV: 0
SIZE: A1