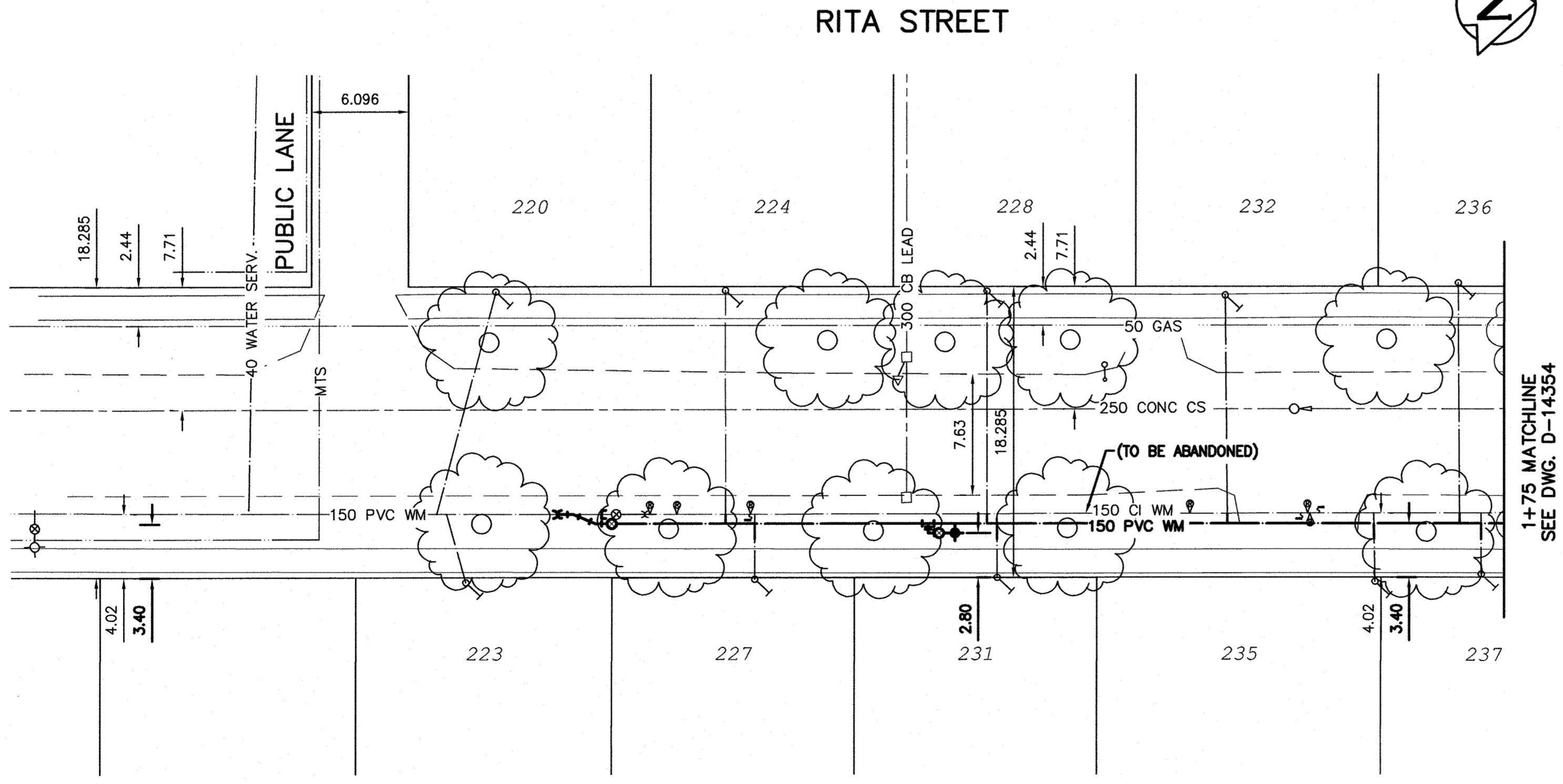


NOTE: CHAINAGES SHOWN ARE ALONG E. P/L OF RITA ST.

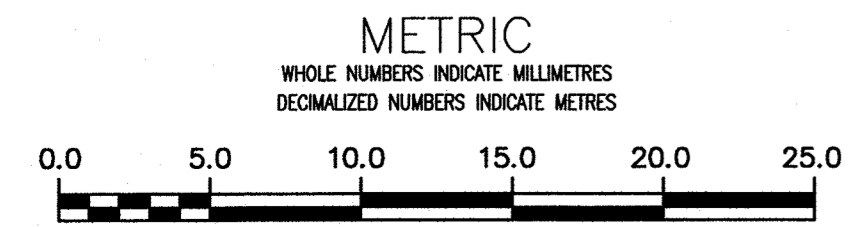


WATER SERVICE INFORMATION

ADDRESS	SIZE (mm) MATERIAL (STREET)	SIZE (mm) MATERIAL (PROP.)	SHORT & LONG MEASUREMENT	CORP. LOCATION	REMARKS
220 RITA ST. RESIDENTIAL	19 CU	19 CU	3.4 NSBL	3.7 S OF S/C	-
223 RITA ST. RESIDENTIAL	19 CU	19 CU	3.5 NSBL	1.2 S OF S/C	-
224 RITA ST. RESIDENTIAL	19 CU	19 CU	2.4 NSBL	-	RECONNECT SERVICE
227 RITA ST. RESIDENTIAL	-	-	5.3 NSBL	-	RECONNECT SERVICE
228 RITA ST. RESIDENTIAL	-	-	3.5 NSBL	-	RECONNECT SERVICE
231 RITA ST. RESIDENTIAL	-	-	5.0 NSBL	-	RECONNECT SERVICE
232 RITA ST. RESIDENTIAL	19 CU	19 CU	3.8 NSBL	0.1 N OF S/C	RECONNECT SERVICE
235 RITA ST. RESIDENTIAL	19 CU	19 CU	0.9 NNBL	0.1 S OF S/C	RECONNECT SERVICE
236 RITA ST. RESIDENTIAL	19 CU	19 CU	3.0 NSBL	-	RECONNECT SERVICE
237 RITA ST. RESIDENTIAL	19 CU	19 CU	4.7 NSBL	-	RECONNECT SERVICE

* SERVICES TO BE RENEWED TO P/L ALL OTHERS TO BE RECONNECTED

NOTE: ALL GATE VALVES TO BE COUNTER-CLOCKWISE TO CLOSE (RED OPERATING NUT)



WARNING
IF POWER EQUIPMENT OR EXPLOSIVES ARE TO BE USED FOR EXCAVATION ON THIS PROJECT THE CONTRACTOR MUST:
1) NOTIFY THE GAS COMPANY OF THE PROPOSED LOCATION OF EXCAVATION.
2) TAKE PRECAUTION TO AVOID DAMAGE TO GAS COMPANY INSTALLATIONS.
SEE PROVINCIAL REGULATION 210/72 FOR DETAILS

LOCATION APPROVED UNDERGROUND STRUCTURES
SUPV. U/G STRUCTURES COMMITTEE DATE
NOTE:
LOCATION OF UNDERGROUND STRUCTURES AS SHOWN ARE BASED ON THE BEST INFORMATION AVAILABLE BUT NO GUARANTEE IS GIVEN THAT ALL EXISTING UTILITIES ARE SHOWN OR THAT THE GIVEN LOCATIONS ARE EXACT. CONFIRMATION OF EXISTENCE AND EXACT LOCATION OF ALL UTILITIES MUST BE OBTAINED FROM THE INDIVIDUAL UTILITIES BEFORE PROCEEDING WITH CONSTRUCTION.

B.M. 39-5 ELEV. 236.615m	74M30 - Tilt. in W. Conc. foundation of M.T.S. Building, Portage Ave. & Olive St., 3.8 m N. of S.W. Cor. of Blkg.		
NO.	ISSUED FOR TENDER	16/04/21	R.S.
NO.	REVISIONS	DATE	BY

Stantec

DESIGNED BY: J.H. CHECKED BY: R.S.
DRAWN BY: J.H. APPROVED BY: R.S.
SCALE: HORIZONTAL 1:250 VERTICAL 1:50
DATE: 2016 04 21
PLOT DATE: 2016 04 21

ENGINEER'S SEAL
PROVINCE OF MANITOBA
APRIL 21/16
R.M. SHERLOCK
MEMBER 24045
REGISTERED PROFESSIONAL ENGINEER
CONSULTANT DRAWING NUMBER: C-206

THE CITY OF WINNIPEG
WATER AND WASTE DEPARTMENT
ENGINEERING DIVISION

2016 WATERMAIN RENEWALS
CONTRACT 6
RITA STREET
135>NNL OF PORTAGE AVENUE TO
220>NNL OF PORTAGE AVENUE

SHEET 7 OF 14
CITY DRAWING NUMBER: D-14353