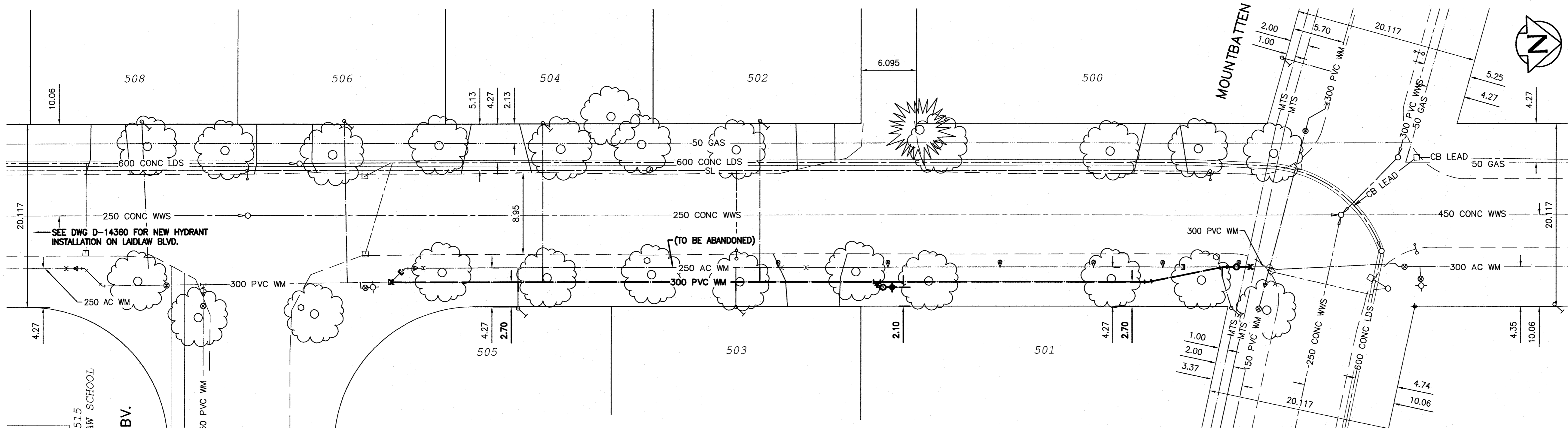


NOTE: CHAINAGES SHOWN ARE ALONG E. P/L OF LAIDLAW BV.

WATER SERVICE INFORMATION					
ADDRESS	SIZE (mm)	SIZE (mm)	SHORT & LONG MEASUREMENT	CORP. LOCATION	REMARKS
	MATERIAL (STREET)	MATERIAL (PROP.)			
508 LAIDLAW BV. RESIDENTIAL	CU	LEAD	6.5 NSL OF GARAGE 9.4 EEL OF GARAGE	-	-
506 LAIDLAW BV. RESIDENTIAL	CU	LEAD	9.0 NSHL	-	-
504 LAIDLAW BV. RESIDENTIAL	CU	LEAD	9.4 EESH	-	RECONNECT SERVICE
504 LAIDLAW BV. RESIDENTIAL	CU	LEAD	13.4 NSHL	-	RECONNECT SERVICE
504 LAIDLAW BV. RESIDENTIAL	CU	LEAD	15.5 N HYD EL LAIDLAW	-	RECONNECT SERVICE
504 LAIDLAW BV. RESIDENTIAL	19	19	7.0 NSHL	-	RECONNECT SERVICE
503 LAIDLAW BV. RESIDENTIAL	CU	LEAD	6.1 FROM BUILDING	-	RECONNECT SERVICE
503 LAIDLAW BV. RESIDENTIAL	CU	LEAD	7.1 NSHL	-	RECONNECT SERVICE
502 LAIDLAW BV. RESIDENTIAL	CU	LEAD	11.2 WWHL	-	RECONNECT SERVICE
502 LAIDLAW BV. RESIDENTIAL	CU	LEAD	10.1 NSHL	-	RECONNECT SERVICE
501 LAIDLAW BV. RESIDENTIAL	CU	LEAD	0.5 NNLL	1.0 S OF S/C	RECONNECT SERVICE
500 LAIDLAW BV. RESIDENTIAL	CU	LEAD	9.4 WWHL	-	-

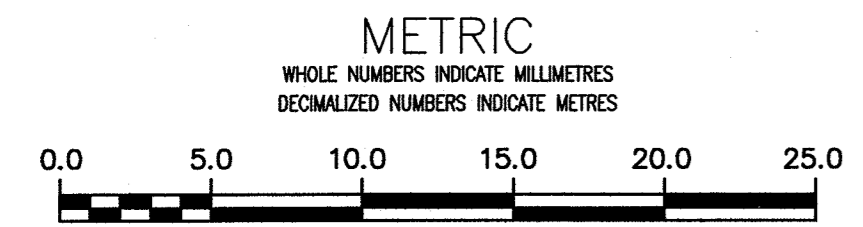
* SERVICES TO BE RENEWED TO P/L ALL OTHERS TO BE RECONNECTED

LAIDLAW BOULEVARD



NOTE: ALL GATE VALVES TO BE CLOCKWISE TO CLOSE (BLACK OPERATING NUT)

APEGM
Certificate of Authorization
Stantec Consulting Ltd.
No. 1301



WARNING
IF POWER EQUIPMENT OR EXPLOSIVES ARE TO BE USED FOR EXCAVATION ON THIS PROJECT THE CONTRACTOR MUST:
1) NOTIFY THE GAS COMPANY OF THE PROPOSED LOCATION OF EXCAVATION.
2) TAKE PRECAUTION TO AVOID DAMAGE TO GAS COMPANY INSTALLATIONS.
SEE PROVINCIAL REGULATION 210/72 FOR DETAILS

LOCATION APPROVED UNDERGROUND STRUCTURES
SUPV. U/G STRUCTURES COMMITTEE DATE
NOTE:
LOCATION OF UNDERGROUND STRUCTURES AS SHOWN ARE BASED ON THE BEST INFORMATION AVAILABLE BUT NO GUARANTEE IS GIVEN THAT ALL EXISTING UTILITIES ARE SHOWN OR THAT THE GIVEN LOCATIONS ARE EXACT. CONFIRMATION OF EXISTENCE AND EXACT LOCATION OF ALL UTILITIES MUST BE OBTAINED FROM THE INDIVIDUAL UTILITIES BEFORE PROCEEDING WITH CONSTRUCTION.

B.M.	50-42	948534 - NE. Cor. Boreham Blvd. & Mountbatten Ave., 10m. on top of 0.05 m dia. x 2.4 m iron pipe, 2.3 m N. of E.L. of Boreham Blvd. & 4.5 m S. of N.L. of Mountbatten Ave.
ELEV.	234.335m	
NO.	ISSUED FOR TENDER	16/04/21 R.S.
NO.	REVISIONS	DATE BY

Stantec

DESIGNED BY: J.H. CHECKED BY: R.S.
DRAWN BY: J.H. APPROVED BY: R.S.
SCALE: HORIZONTAL 1:250 VERTICAL 1:50
RELEASED FOR CONSTRUCTION: [Signature]
DATE: 2016 04 21

ENGINEER'S SEAL
PROVINCE OF MANITOBA
APRIL 21/16
R.W. SHERLOCK
MEMBER 24094
REGISTERED PROFESSIONAL ENGINEER
CONSULTANT DRAWING NUMBER: C-203

THE CITY OF WINNIPEG
WATER AND WASTE DEPARTMENT
ENGINEERING DIVISION

2016 WATERMAIN RENEWALS
CONTRACT 6
LAIDLAW BOULEVARD
BOREHAM BOULEVARD TO
MOUNTBATTEN AVENUE

SHEET 4 OF 14
CITY DRAWING NUMBER: D-14350