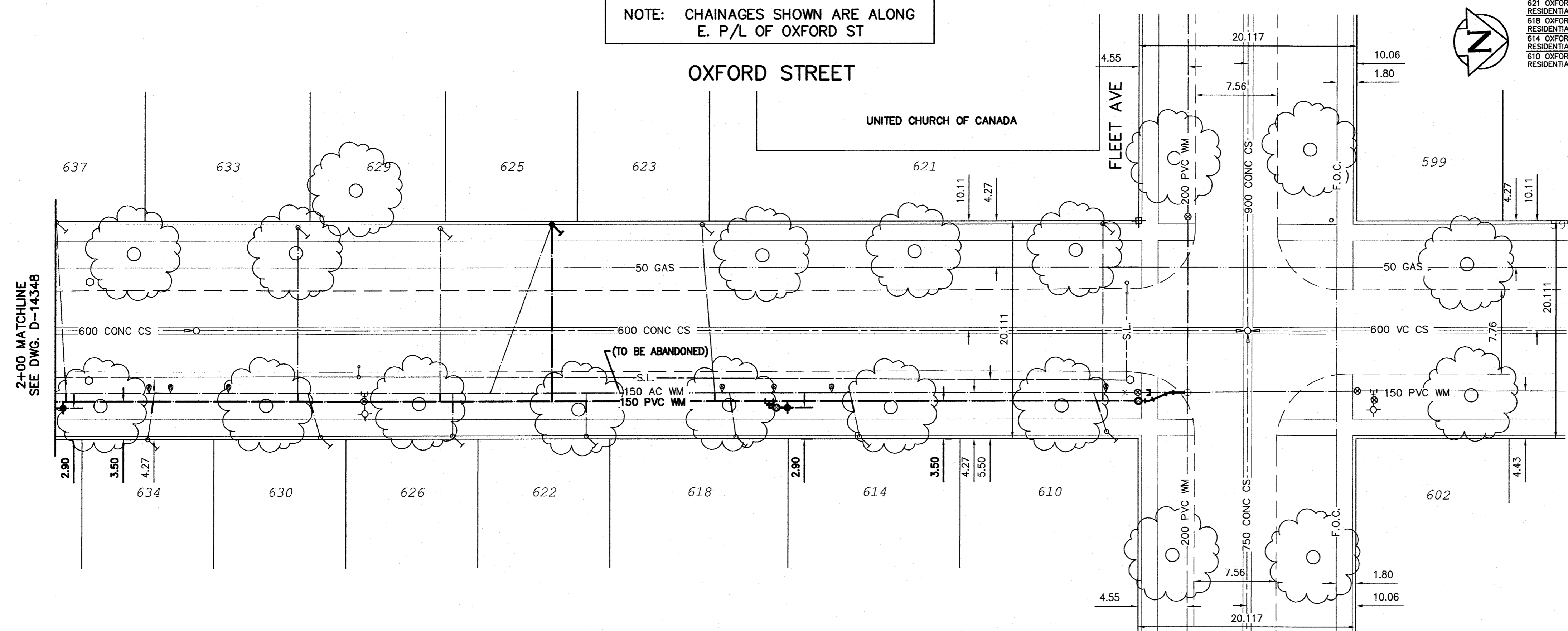


**WATER SERVICE INFORMATION**

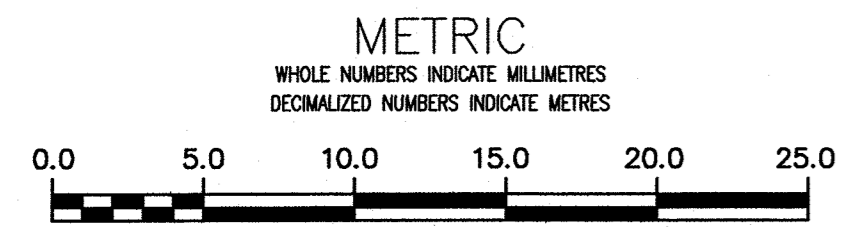
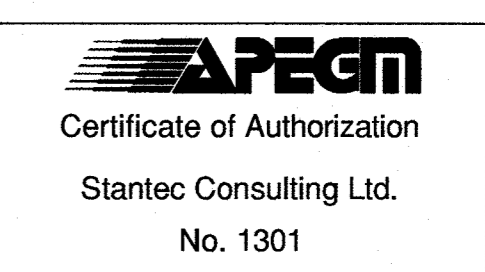
ADDRESS	SIZE (mm) MATERIAL (STREET)	SIZE (mm) MATERIAL (PROP.)	SHORT & LONG MEASUREMENT	CORP. LOCATION	REMARKS
637 OXFORD ST. RESIDENTIAL	19 CU	19 CU	3.5 NNHL 100.3 SSL FLEET	0.9 N OF S/C	RECONNECT SERVICE
634 OXFORD ST. RESIDENTIAL	19 CU	19 CU	4.3 NNHL 91.4 SSL FLEET	0.6 N OF S/C	RECONNECT SERVICE
633 OXFORD ST. RESIDENTIAL	19 CU	19 CU	0.8 NNHL 78.0 SSL FLEET	OPP OF S/C	RECONNECT SERVICE
630 OXFORD ST. RESIDENTIAL	19 CU	19 CU	0.5 NNHL 75.3 SSL FLEET	1.2 S OF S/C	RECONNECT SERVICE
629 OXFORD ST. RESIDENTIAL	19 CU	19 CU	0.9 NNHL 64.6 SSL FLEET	OPP OF S/C	RECONNECT SERVICE
626 OXFORD ST. RESIDENTIAL	19 CU	19 CU	1.2 NNHL 63.1 SSL FLEET	OPP OF S/C	RECONNECT SERVICE
625 OXFORD ST. RESIDENTIAL	19 CU	19 CU	1.2 NNHL	18.5 S OF S/C	RENEW SERVICE
623 OXFORD ST. RESIDENTIAL	19 CU	19 CU	1.2 NNHL 40.4 SSL FLEET	1.2 N OF S/C	RECONNECT SERVICE
622 OXFORD ST. RESIDENTIAL	19 CU	19 CU	0.9 NNHL 50.6 SSL FLEET	OPP OF S/C	RECONNECT SERVICE
621 OXFORD ST. RESIDENTIAL	25 CU	25 CU	1.8 NNHL 3.2 SSL FLEET	OPP OF S/C	RECONNECT SERVICE
618 OXFORD ST. RESIDENTIAL	19 CU	19 CU	2.9 NNHL 37.8 SSL FLEET	0.6 S OF S/C	RECONNECT SERVICE
614 OXFORD ST. RESIDENTIAL	19 CU	19 CU	4.6 NNHL 25.6 SSL FLEET	0.9 S OF S/C	RECONNECT SERVICE
610 OXFORD ST. RESIDENTIAL	19 CU	19 CU	1.2 NNHL 2.7 SSL FLEET	1.2 S OF S/C	RECONNECT SERVICE

\* SERVICES TO BE RENEWED TO P/L ALL OTHERS TO BE RECONNECTED

NOTE: CHAINAGES SHOWN ARE ALONG E. P/L OF OXFORD ST



NOTE: ALL GATE VALVES TO BE COUNTER-CLOCKWISE TO CLOSE (RED OPERATING NUT)



**WARNING**  
IF POWER EQUIPMENT OR EXPLOSIVES ARE TO BE USED FOR EXCAVATION ON THIS PROJECT THE CONTRACTOR MUST:  
1) NOTIFY THE GAS COMPANY OF THE PROPOSED LOCATION OF EXCAVATION.  
2) TAKE PRECAUTION TO AVOID DAMAGE TO GAS COMPANY INSTALLATIONS.  
SEE PROVINCIAL REGULATION 210/72 FOR DETAILS

**LOCATION APPROVED UNDERGROUND STRUCTURES**  
SUPV. U/G STRUCTURES COMMITTEE DATE  
NOTE: LOCATION OF UNDERGROUND STRUCTURES AS SHOWN ARE BASED ON THE BEST INFORMATION AVAILABLE BUT NO GUARANTEE IS GIVEN THAT ALL EXISTING UTILITIES ARE SHOWN OR THAT THE GIVEN LOCATIONS ARE EXACT. CONFIRMATION OF EXISTENCE AND EXACT LOCATION OF ALL UTILITIES MUST BE OBTAINED FROM THE INDIVIDUAL UTILITIES BEFORE PROCEEDING WITH CONSTRUCTION.

B.M. 51-18 ELEV. 232.638m	S.W. Cor. Fleet Ave. & Cambridge St. Brass plug in 11 m Conc. pile, 2.3 m N of S.L. Fleet Ave. & 0.3 m W. of W.L. Cambridge St.		
0	ISSUED FOR TENDER	16/04/21	R.S.
NO.	REVISIONS	DATE	BY

**Stantec**

DESIGNED BY: J.H. CHECKED BY: R.S.  
DRAWN BY: J.H. APPROVED BY: R.S.  
SCALE: HORIZONTAL 1:250 VERTICAL 1:50  
DATE: 2016 04 21  
PLOT DATE: 2016 04 21

ENGINEER'S SEAL  
PROVINCE OF MANITOBA  
APRIL 21/16  
R.M. SHERLOCK  
REGISTERED PROFESSIONAL ENGINEER  
MEMBER 24045  
CONSULTANT DRAWING NUMBER  
C-202

**THE CITY OF WINNIPEG**  
WATER AND WASTE DEPARTMENT  
ENGINEERING DIVISION

2016 WATERMAIN RENEWALS  
CONTRACT 6  
OXFORD STREET  
100 SSL OF FLEET AVENUE TO  
FLEET AVENUE

SHEET 3 OF 14  
CITY DRAWING NUMBER  
D-14349