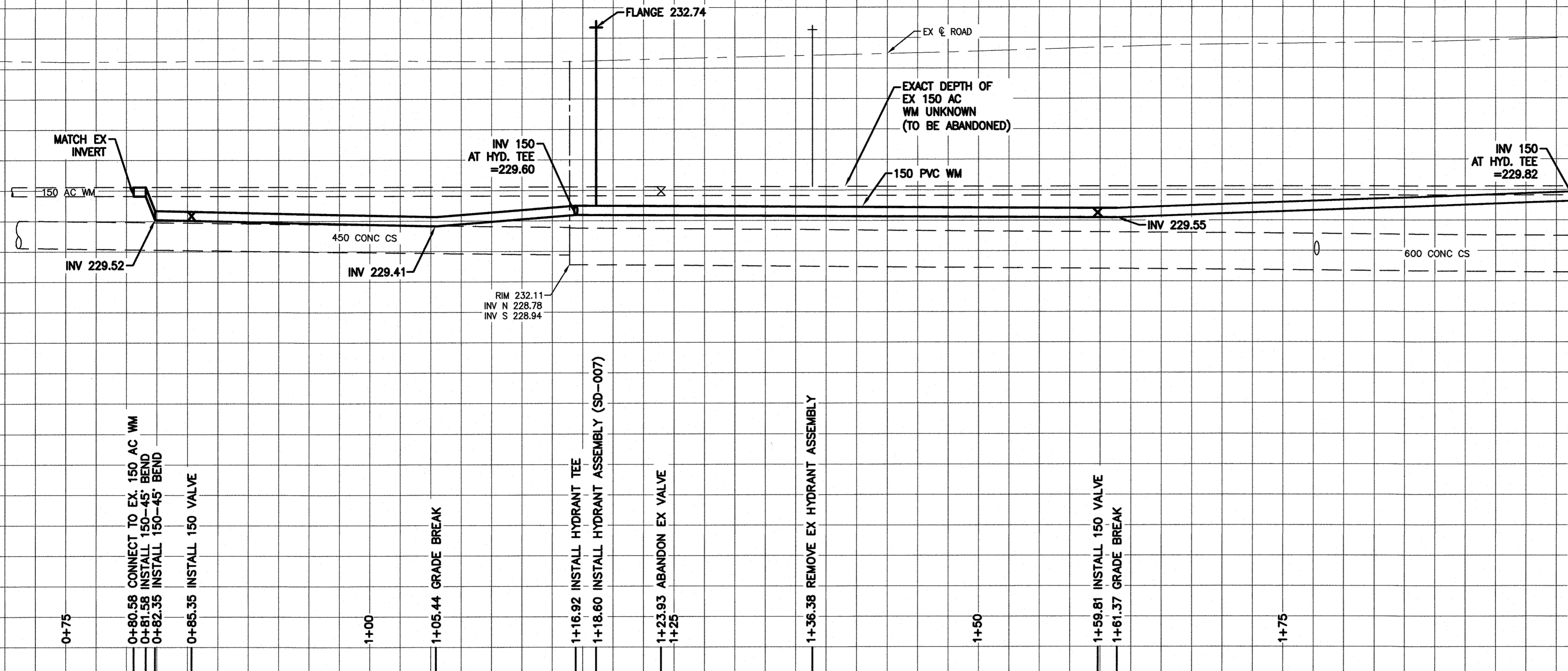


234.0
233.0
232.0
231.0
230.0
229.0
228.0
227.0
226.0

234.0
233.0
232.0
231.0
230.0
229.0
228.0
227.0



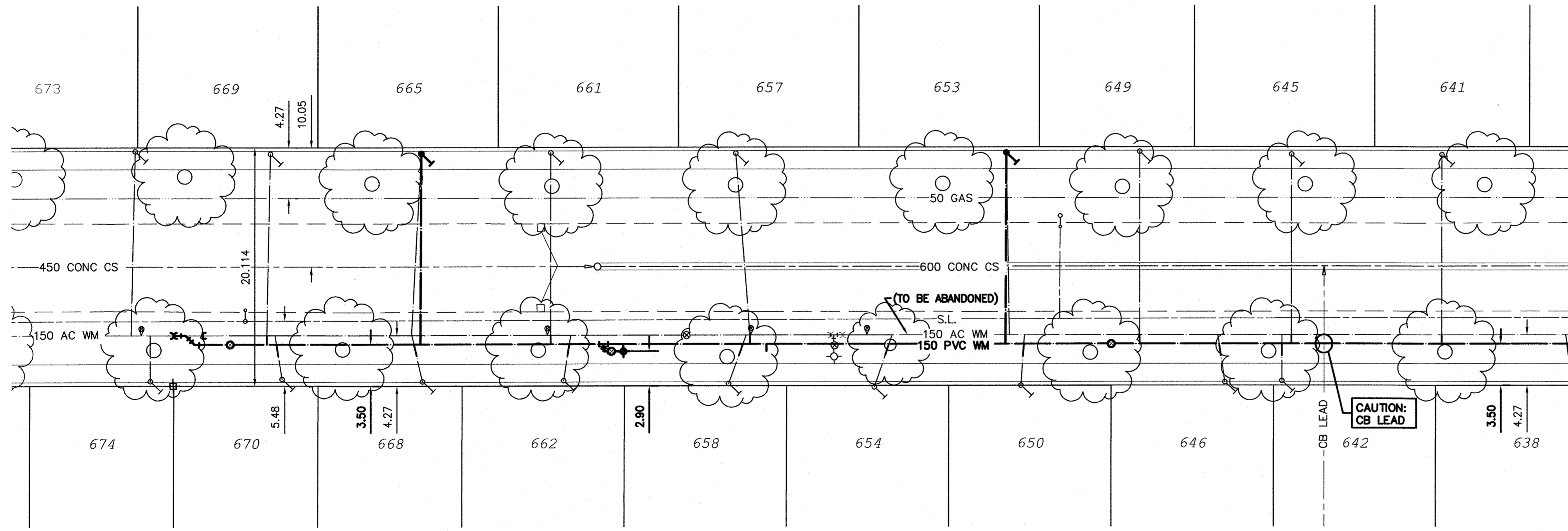
NOTE: CHAINAGES SHOWN ARE ALONG E. P/L OF OXFORD ST

OXFORD STREET

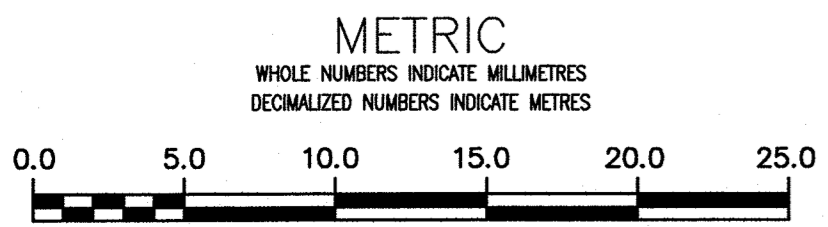
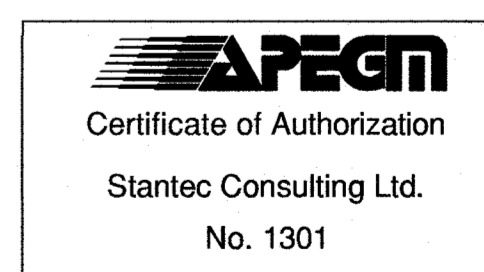


WATER SERVICE INFORMATION					
ADDRESS	SIZE (mm) MATERIAL (STREET)	SIZE (mm) MATERIAL (PROP.)	SHORT & LONG MEASUREMENT	CORP. LOCATION	REMARKS
670 OXFORD ST. RESIDENTIAL	19 CU	19 CU	1.4 SNHL 143.3>NNL GRANT	0.6 S OF S/C	RECONNECT SERVICE
669 OXFORD ST. RESIDENTIAL	19 CU	19 CU	2.3 SNHL 308.5 SSSL FLEET	0.3 S OF S/C	RECONNECT SERVICE
668 OXFORD ST. RESIDENTIAL	19 CU	19 CU	1.2 SNHL 155.1>NNL GRANT	0.9 S OF S/C	RECONNECT SERVICE
* 665 OXFORD ST. RESIDENTIAL	19 CU	19 CU	4.6 SNHL 158.1>NNL GRANT	0.6 S OF S/C	RENEW SERVICE
662 OXFORD ST. RESIDENTIAL	19 CU	19 CU	2.7 SNHL 5.2 SSSL	0.6 N OF S/C	RECONNECT SERVICE
661 OXFORD ST. RESIDENTIAL	19 CU	19 CU	4.8 NSLL	OPP OF S/C	RECONNECT SERVICE
658 OXFORD ST. RESIDENTIAL	19 CU	19 CU	2.1 SNHL 172.8 SSSL FLEET	1.5 N OF S/C	RECONNECT SERVICE
657 OXFORD ST. RESIDENTIAL	19 CU	19 CU	3.1 SNHL 195.1>NNL GRANT	1.2 N OF S/C	RECONNECT SERVICE
654 OXFORD ST. RESIDENTIAL	19 CU	19 CU	3.7 SNHL 153.2>NNL GRANT	1.5 N OF S/C	RECONNECT SERVICE
* 653 OXFORD ST. RESIDENTIAL	19 CU	19 CU	0.6 SNHL 217.5>NNL GRANT	0.3 N OF S/C	RENEW SERVICE
650 OXFORD ST. RESIDENTIAL	19 CU	19 CU	4.9 NSHL 147.8 SSSL FLEET	0.3 N OF S/C	RECONNECT SERVICE
649 OXFORD ST. RESIDENTIAL	19 CU	19 CU	2.6 SNHL 76.2 SSSL FLEET	OPP OF S/C	RECONNECT SERVICE
648 OXFORD ST. RESIDENTIAL	19 CU	19 CU	1.5 SNHL 222.7>NNL GRANT	0.6 S OF S/C	RECONNECT SERVICE
645 OXFORD ST. RESIDENTIAL	19 CU	19 CU	5.0 SNHL 125.3 SSSL FLEET	OPP OF S/C	RECONNECT SERVICE
642 OXFORD ST. RESIDENTIAL	19 CU	19 CU	0.9 SSSL 128.9 SSSL FLEET	OPP OF S/C	RECONNECT SERVICE
641 OXFORD ST. RESIDENTIAL	19 CU	19 CU	4.1 NSHL 112.8 SSSL FLEET	OPP OF S/C	RECONNECT SERVICE
638 OXFORD ST. RESIDENTIAL	19 CU	19 CU	2.0 SNHL 10.4 SSSL #634	0.6 S OF S/C	RECONNECT SERVICE

* SERVICES TO BE RENEWED TO P/L ALL OTHERS TO BE RECONNECTED



NOTE: ALL GATE VALVES TO BE COUNTER-CLOCKWISE TO CLOSE (RED OPERATING NUT)



WARNING
IF POWER EQUIPMENT OR EXPLOSIVES ARE TO BE USED FOR EXCAVATION ON THIS PROJECT THE CONTRACTOR MUST:
1) NOTIFY THE GAS COMPANY OF THE PROPOSED LOCATION OF EXCAVATION.
2) TAKE PRECAUTION TO AVOID DAMAGE TO GAS COMPANY INSTALLATIONS.
SEE PROVINCIAL REGULATION 210/72 FOR DETAILS

LOCATION APPROVED UNDERGROUND STRUCTURES
SUPV. U/G STRUCTURES COMMITTEE DATE
NOTE: LOCATION OF UNDERGROUND STRUCTURES AS SHOWN ARE BASED ON THE BEST INFORMATION AVAILABLE BUT NO GUARANTEE IS GIVEN THAT ALL EXISTING UTILITIES ARE SHOWN OR THAT THE GIVEN LOCATIONS ARE EXACT. CONFIRMATION OF EXISTENCE AND EXACT LOCATION OF ALL UTILITIES MUST BE OBTAINED FROM THE INDIVIDUAL UTILITIES BEFORE PROCEEDING WITH CONSTRUCTION.

B.M. 51-18 ELEV. 232.638m	S.W. Cor. Fleet Ave. & Cambridge St. Brass plug in 11 m Conc. pile, 2.3 m N of S.L. Fleet Ave. & 0.3 m W. of W.L. Cambridge St.		
NO.	ISSUED FOR TENDER	16/04/21	R.S.
NO.	REVISIONS	DATE	BY

Stantec

DESIGNED BY: J.H. CHECKED BY: R.S.
DRAWN BY: J.H. APPROVED BY: R.S.

SCALE: HORIZONTAL 1:250 VERTICAL 1:50
DATE: 2016 04 21
PLOT DATE: 2016 04 21

ENGINEER'S SEAL
PROVINCE OF MANITOBA
APRIL 21/16
R.M. SHERLOCK
REGISTERED PROFESSIONAL ENGINEER
MEMBER 24042

THE CITY OF WINNIPEG
WATER AND WASTE DEPARTMENT
ENGINEERING DIVISION

2016 WATERMAIN RENEWALS
CONTRACT 6
OXFORD STREET
219 SSL OF FLEET AVENUE TO
100 SSL OF FLEET AVENUE

SHEET 2 OF 14
CITY DRAWING NUMBER
D-14348