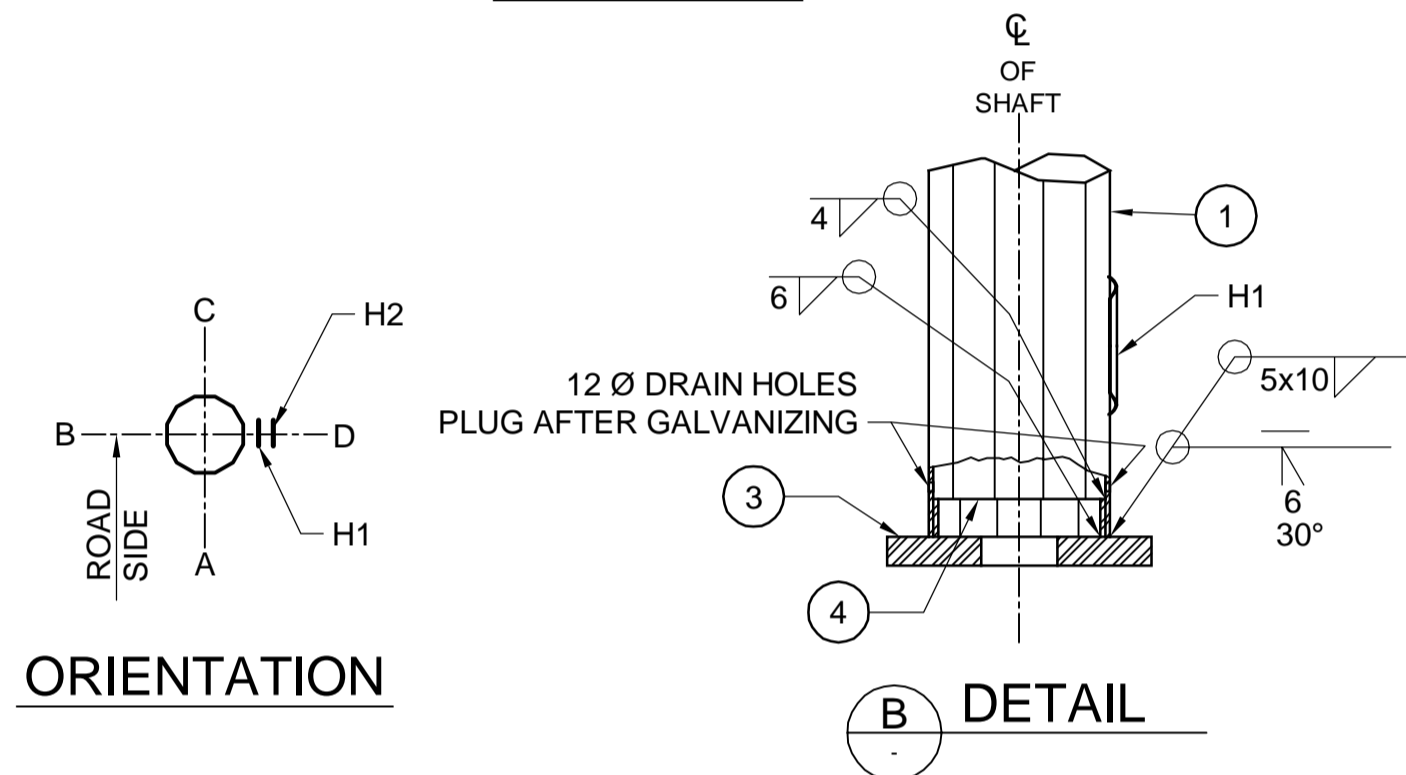
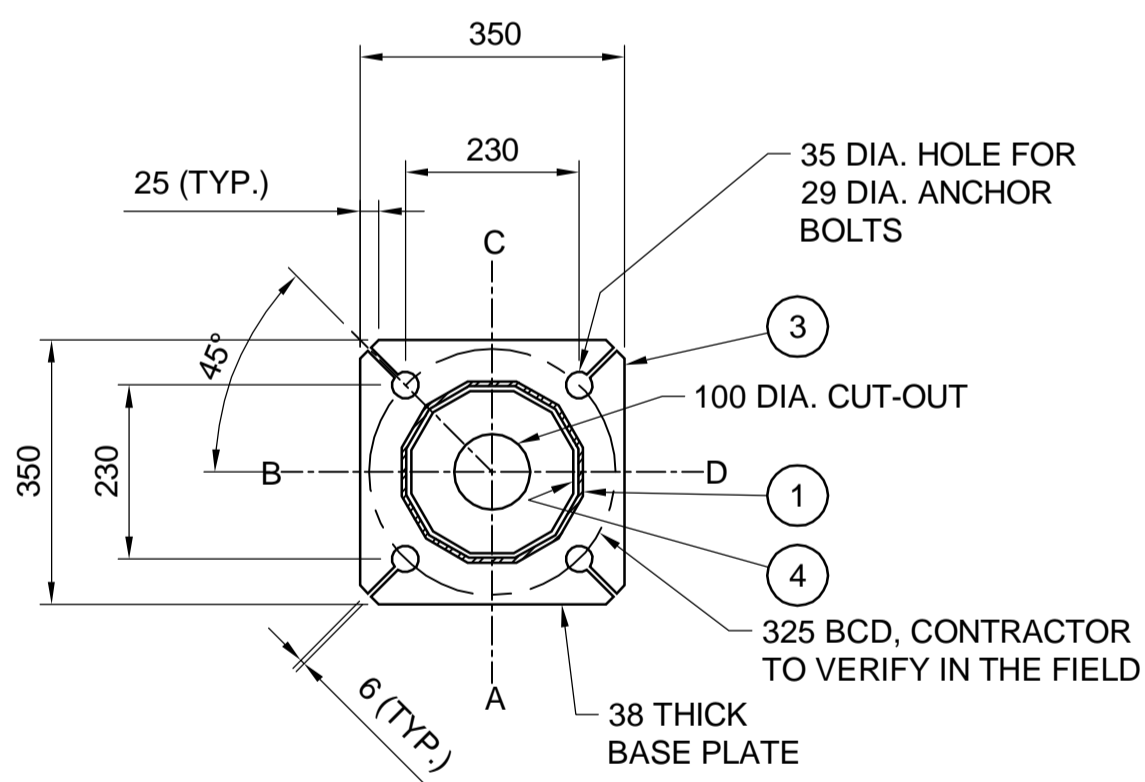


ELEVATION

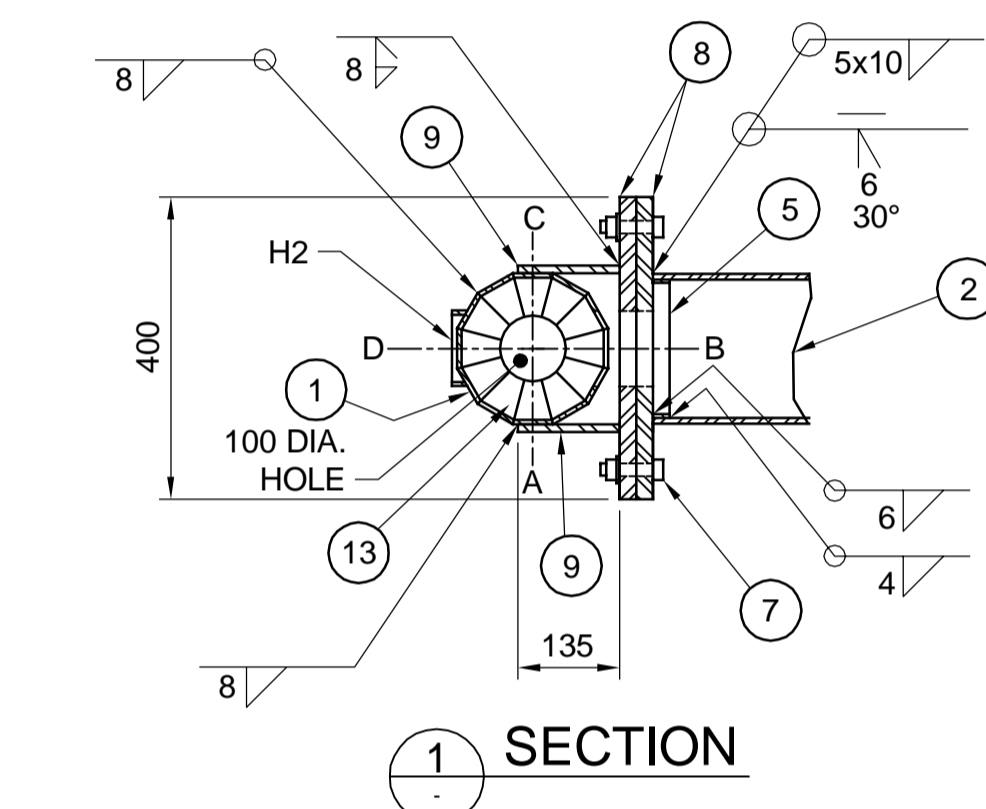


ORIENTATION

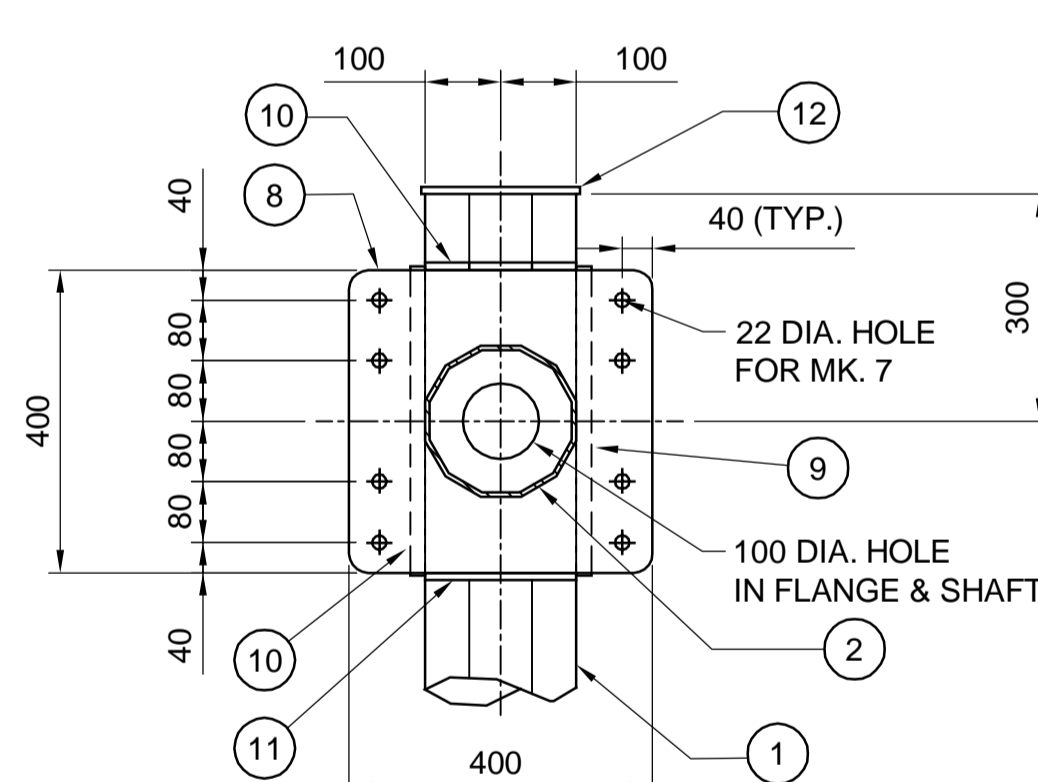
DETAIL B



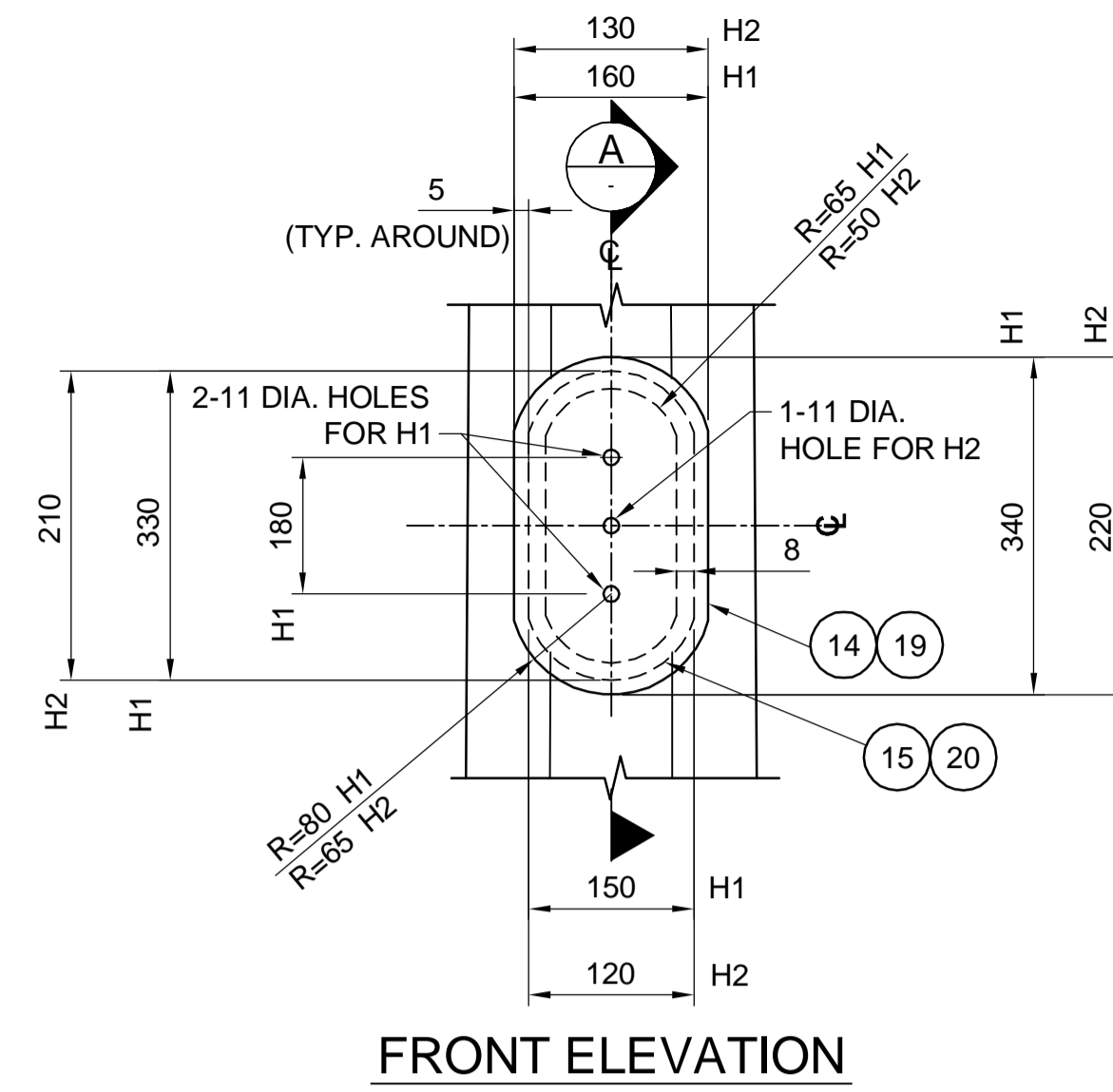
BASE PLATE DETAIL



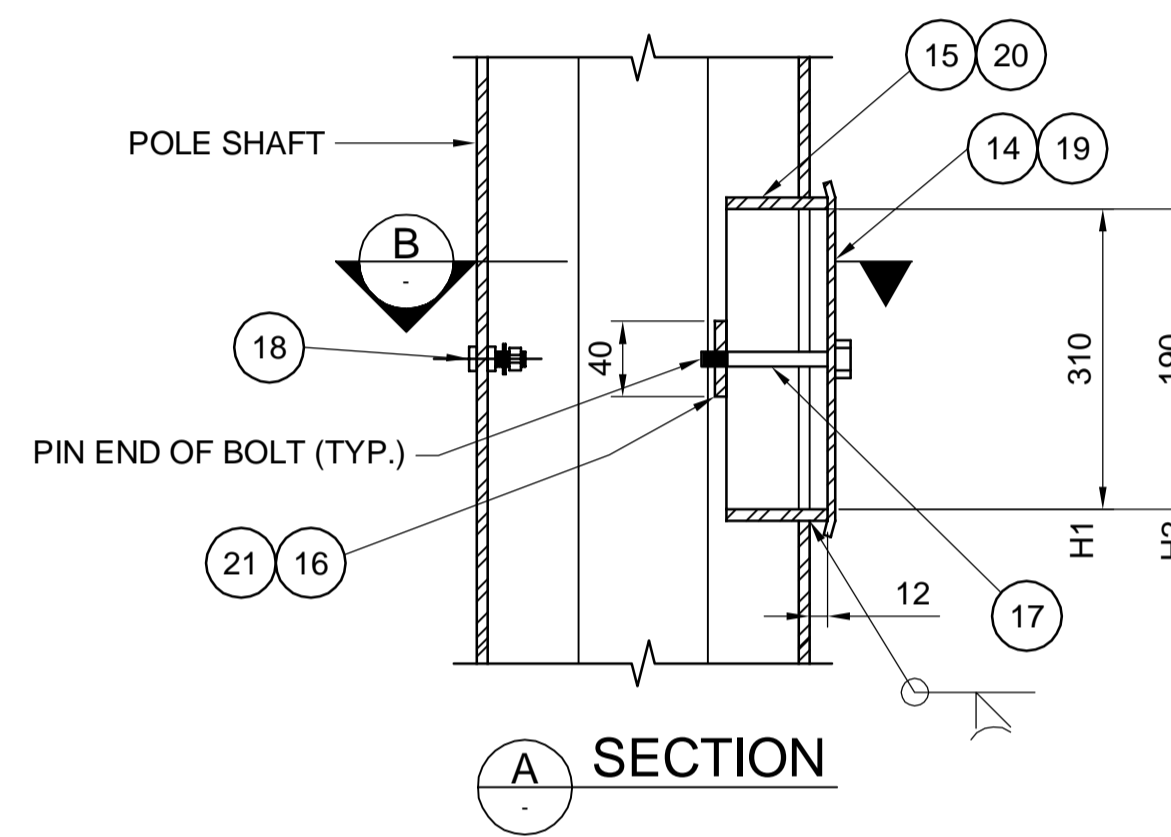
SECTION 1



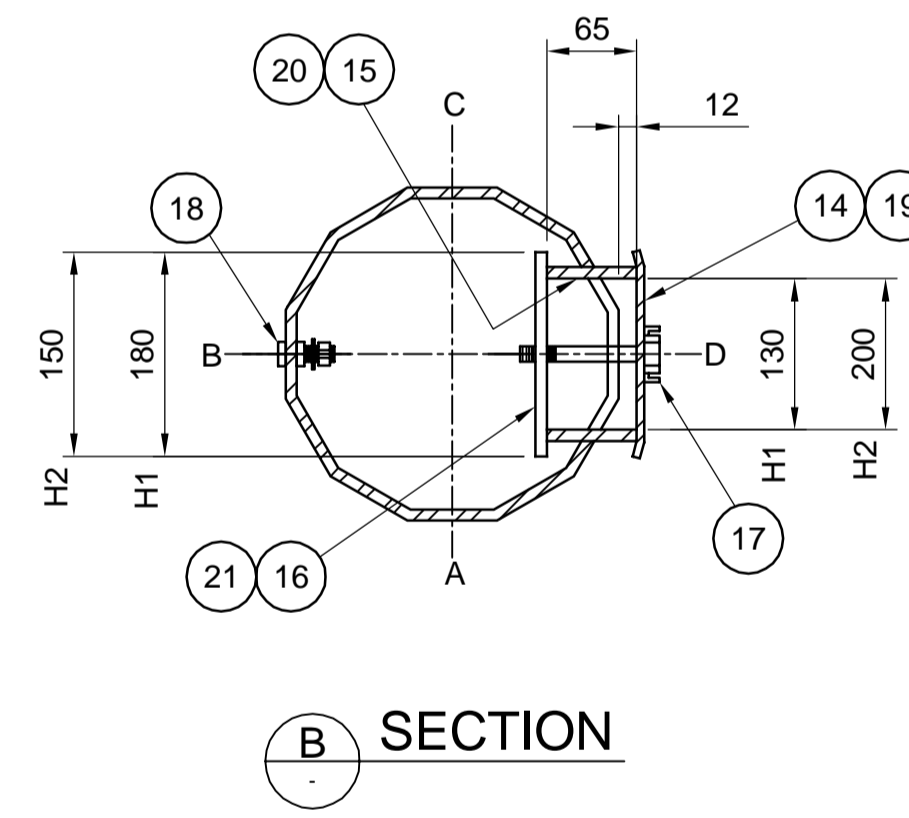
FLANGE PLATE DETAIL



FRONT ELEVATION

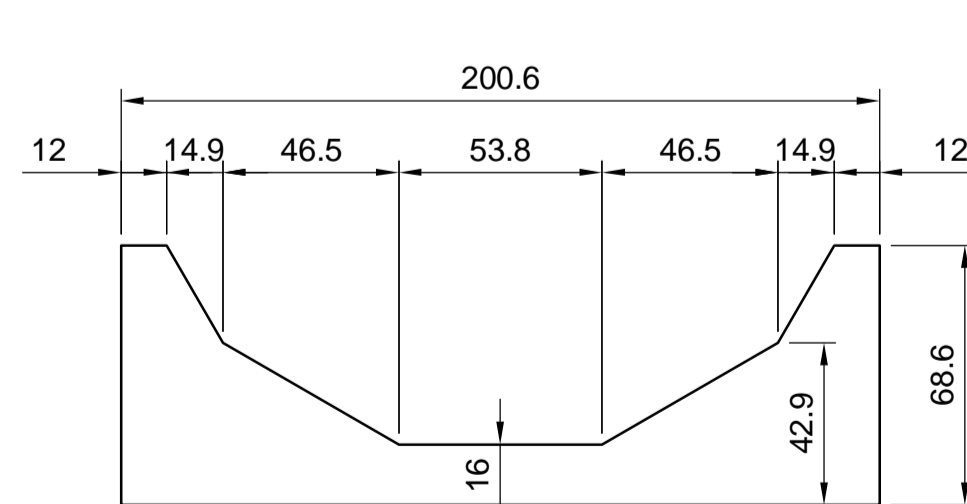


SECTION A

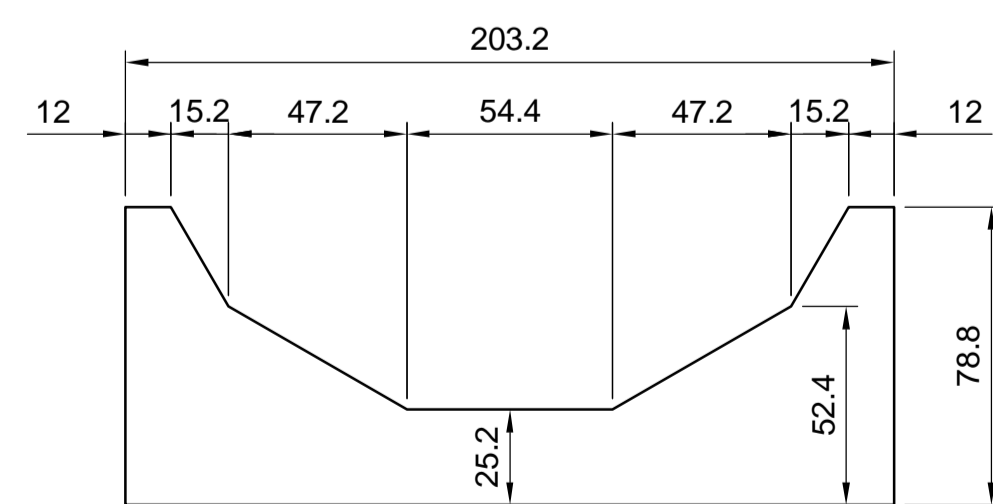


SECTION B

HANDHOLE MARK H1 & H2



GUSSET PLATE MARK 10



GUSSET PLATE MARK 11



STRUCTURE IDENTIFICATION NUMBER SIZE

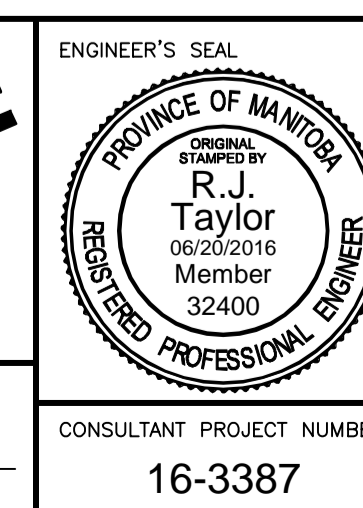
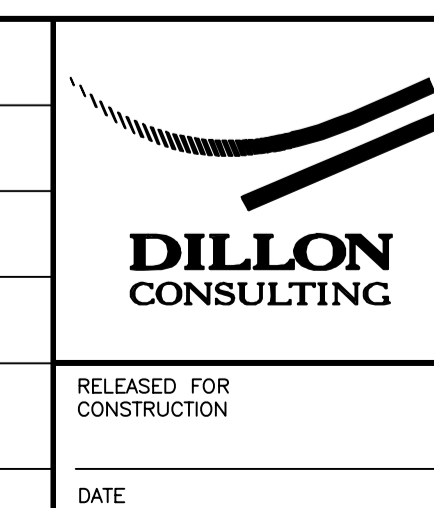
SECTION D

NOTES:

- PROVIDE "RAISED" IDENTIFICATION NO. WITH WELDING ELECTRODE FOR THE SIGN STRUCTURE.
- GRIND ALL SHARP POINTS AND EDGES.



DESIGNED BY		DRA	
DRAWN BY		KB	
CHECKED BY		SSR	
APPROVED BY		RJT	
HOR. SCALE		-	
VERTICAL		-	
0	ISSUED FOR TENDER	6/20/16	RJT
NO.	REVISIONS	DATE	BY
		DATE	JUNE 20, 2016



THE CITY OF WINNIPEG PUBLIC WORKS DEPARTMENT	
STEEL OVERHEAD SIGN SUPPORT STRUCTURES - 2016 MAINTENANCE WORKS	CITY DRAWING NUMBER TLS-088-16-02
SHEET 6 OF 06	CONSULTANT DRAWING NUMBER --
CONSULTANT PROJECT NUMBER 16-3387	
TLS-088 DETAILS	

GENERAL NOTES

- DESIGN DATA
 - AASHTO LRFD SPECIFICATIONS FOR STRUCTURAL SUPPORTS FOR HIGHWAY SIGNS, LUMINAIRES, AND TRAFFIC SIGNALS, 1st EDITION, 2015.
 - DESIGN WIND LOAD = 1.50 kPa (31 PSF)
 - DESIGN ICE LOAD = 0.15 kPa (3 PSF)
 - FATIGUE CATEGORY I CONSIDERING NATURAL WIND GUSTS AND TRUCK INDUCED GUSTS. FATIGUE CATEGORY II FOR GALLOPING.
- DODECAGONAL SHAFT AND DODECAGONAL ARM SHALL BE CSA G40.21 - 350W STRUCTURAL STEEL.
- ALL MISCELLANEOUS METALS SHALL BE CSA G40.21 - 300W STRUCTURAL STEEL.
- ALL MATERIALS EXCEPT STAINLESS STEEL AND ALUMINUM SHALL BE HOT-DIP GALVANIZED IN ACCORDANCE WITH CSA G164 TO A MIN. NET RETENSION OF 600 g/m².
- ALL AREAS OF DAMAGED GALVANIZING SHALL BE REPAIRED WITH SELF-FLUXING LOW TEMPERATURE, ZINC BASED ALLOY ROD OR SPRAY-ON COATING CALLED "ZINGA".
- NEW 50 mm. MAX. GROUT PAD TO BE PROVIDED AFTER INSTALLING THE STRUCTURE.
- SIGN PLATE
 - MAXIMUM SIZE 900 x 1500 mm. SUPPLIED AND INSTALLED BY THE CITY OF WINNIPEG TRAFFIC SERVICES BRANCH.
- INSTALL HOLES IN THE SHAFT AND ARM FOR DRAINAGE DURING GALVANIZING AS DETAILED, PLUG HOLES WHERE SHOWN AFTER GALVANIZING.

METRIC

WHOLE NUMBERS INDICATE MILLIMETRES
DECIMALIZED NUMBERS INDICATE METRES