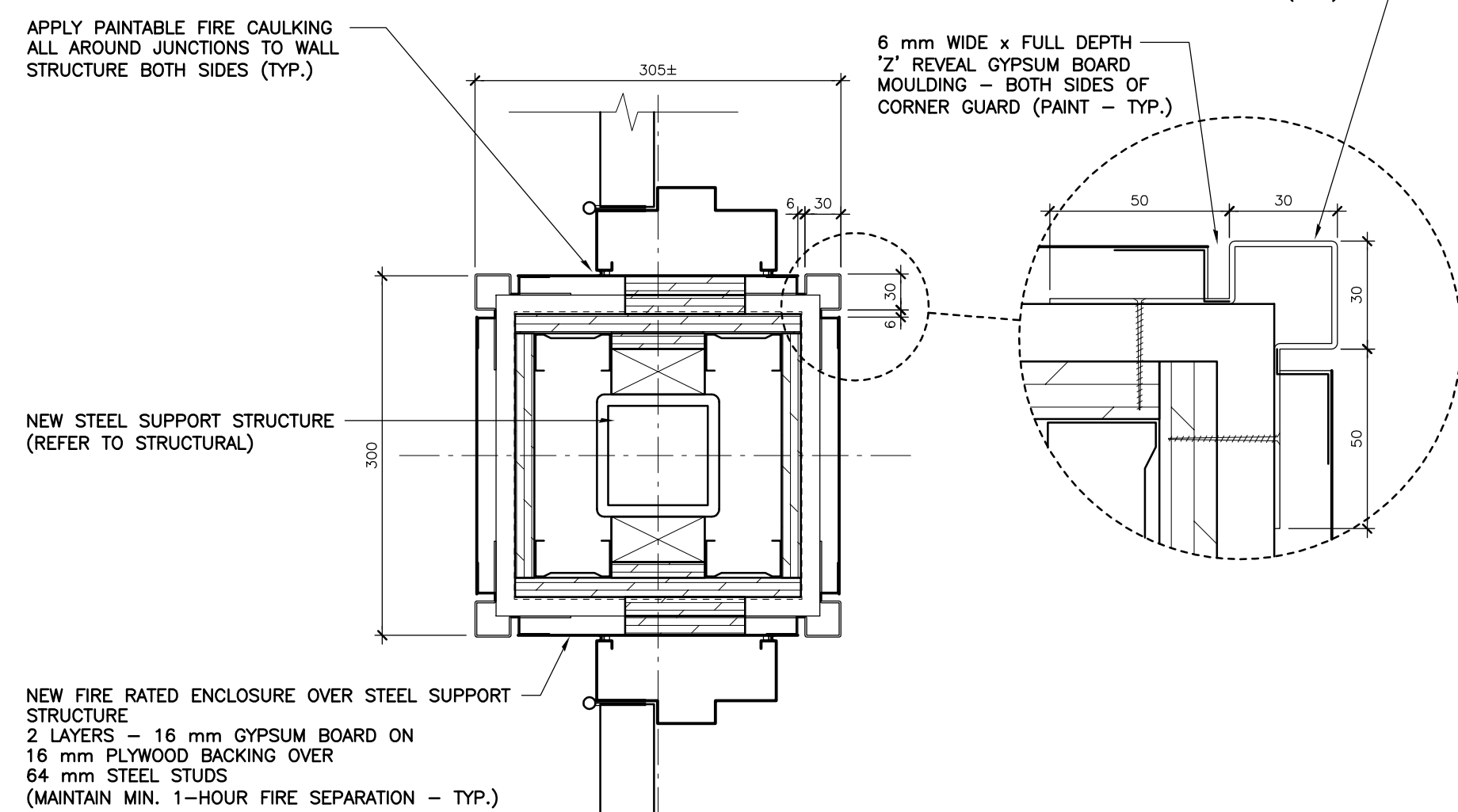
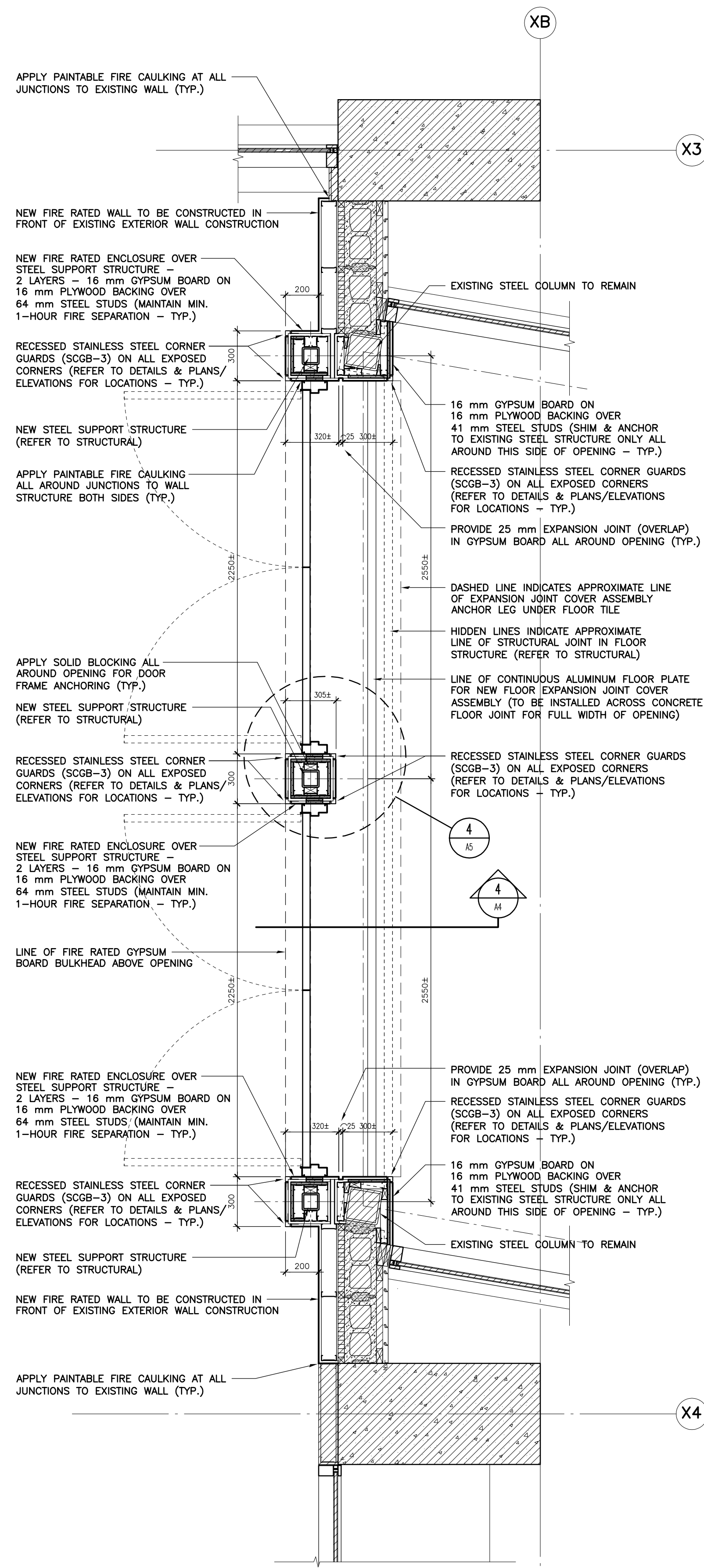


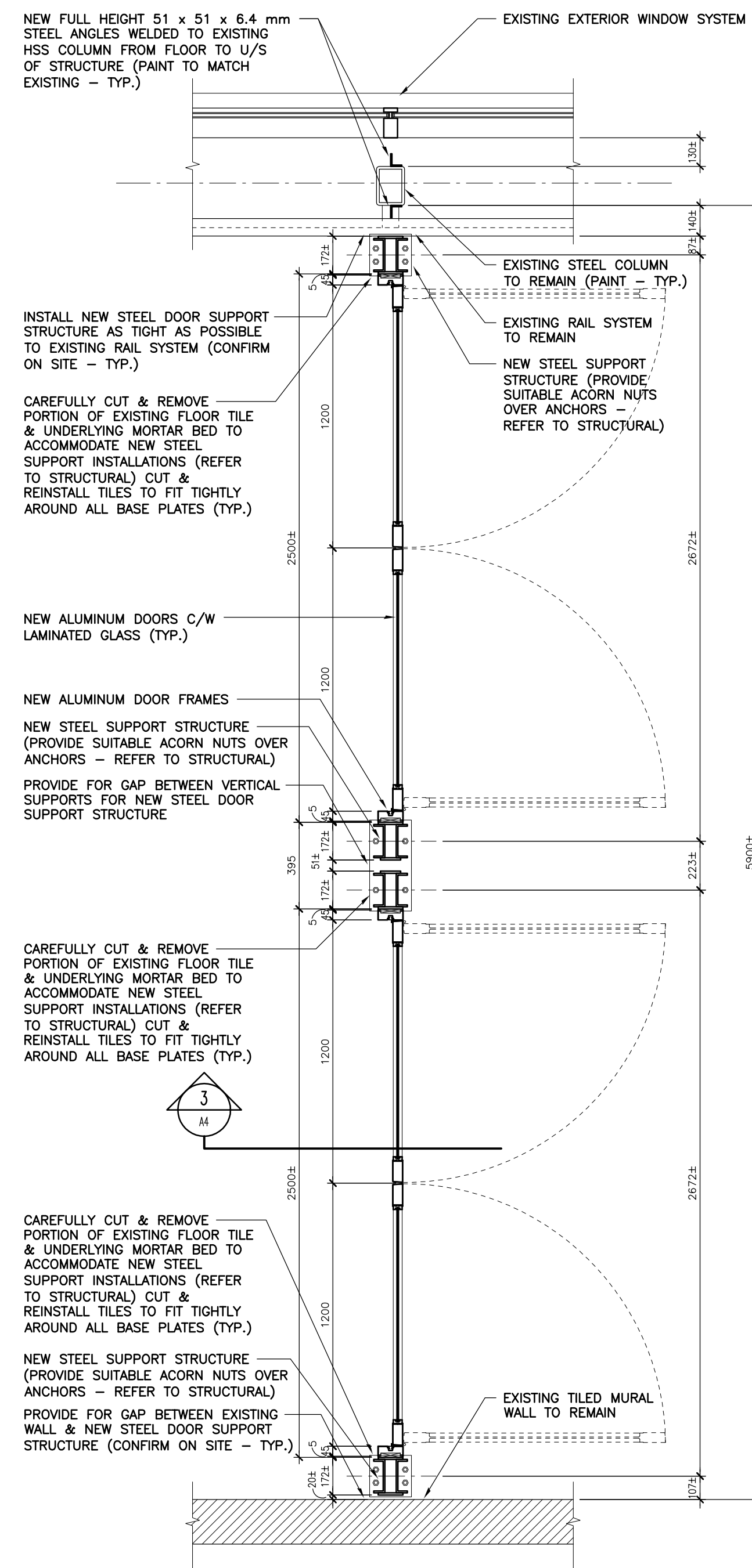
1 LEVEL 02 - EXISTING DOORS @ SKYWALK CONNECTION - DEMOLITION PLAN DETAIL
SCALE: 1:20



4 LEVEL 02 - TYPICAL FIRE RATED ENCLOSURE / CORNER GUARD DETAIL
SCALE: 1:5



2 LEVEL 02 - NEW DOORS @ SKYWALK CONNECTION - CONSTRUCTION PLAN DETAIL
SCALE: 1:20



3 LEVEL 02 - NEW DOORS IN SKYWALK - CONSTRUCTION PLAN DETAIL
SCALE: 1:20

- NOTES:**
CONSTRUCTION GENERAL NOTES:
- THESE DRAWINGS SHALL NOT BE SCALED.
 - THE CONTRACTOR SHALL VISIT THE SITE & VERIFY THAT ALL DIMENSIONS & DETAILED INFORMATION SHOWN IS CORRECT.
 - ALL DIMENSIONS ARE TO FACE OF GYPSUM BOARD OR CONCRETE OR MASONRY UNLESS OTHERWISE NOTED. DIMENSIONS TO STRUCTURAL GRIDLINES & COLUMN CENTRELINES ARE INDICATED WITH A DOT.
 - CAULK WITH APPROVED JOINT SEALANT, PERIMETER OF GYPSUM BOARD CONTINUOUSLY BOTH SIDES OF ALL FIRE SEPARATIONS & INTERIOR WALLS CONTAINING ACOUSTIC INSULATION.
 - ALL PRODUCTS & MATERIALS TO BE USED & INSTALLED SHALL CONFORM WITH THE MANUFACTURER'S SPECIFICATIONS & APPLICABLE CODES.
 - SUPPLY & INSTALL FIRESTOPPING & SMOKE SEALS AROUND ALL PENETRATIONS THROUGH FIRE SEPARATIONS TO MAINTAIN THE INTEGRITY OF THE FIRE SEPARATION.
 - FIRE SEPARATIONS ARE INDICATED BY LINE TYPE DESIGNATION ON DRAWINGS - REFER TO LEGEND. CONSTRUCT ALL INTERIOR FIRE SEPARATIONS TO MAINTAIN THE CONTINUITY OF THESE SEPARATIONS & RATINGS. FIRE SEPARATIONS SHALL BE FULLY LABELED ON THE WALL WITH 150 mm HIGH LETTERS ABOVE THE FINISHED CEILING @ 6.0 m O.C.
 - ALL GYPSUM BOARD TO BE "TYPE X" TO ACHIEVE FIRE RATINGS INDICATED.
 - RESTORE/REPAIR ALL EXISTING WALLS, FLOORS & CEILINGS WITHIN AREAS OF RENOVATION AFFECTED BY CONSTRUCTION TO ORIGINAL CONDITION. FINISH TO MATCH EXISTING OR AS INDICATED.
 - THE CONTRACTOR SHALL COORDINATE MECHANICAL AND ELECTRICAL WITH STRUCTURE & ADJUST FURNISHING AS REQUIRED IN CONJUNCTION WITH CONTRACT ADMINISTRATOR.

- DEMOLITION GENERAL NOTES:**
- THE FOLLOWING NOTES AND DRAWINGS ARE INTENDED TO ASSIST THE CONTRACTOR IN DETERMINING THE EXTENT OF DEMOLITION & REPAIR WORK NECESSARY IN ORDER TO CONSTRUCT THE NEW WORK CONTAINED IN THE CONTRACT DOCUMENTS.
- THE DEMOLITION SHOWN INCLUDES BUT IS NOT NECESSARILY LIMITED TO THE NOTES INDICATED ON THESE DRAWINGS.
- DEMOLISH ALL EXISTING CONSTRUCTION AS INDICATED BY DASHED LINES.
 - REFER TO STRUCTURAL DRAWINGS & SPECIFICATIONS FOR REMOVAL & REPAIR TO EXISTING CONCRETE SLAB - TYPICAL.
 - CONTRACT ADMINISTRATOR IS TO HAVE RIGHT OF FIRST REFUSAL FOR ALL ITEMS INDICATED TO BE REMOVED FROM AREAS OF RENOVATION.
 - COORDINATE EXISTING SERVICES TO REMAIN WITH MECHANICAL & ELECTRICAL.
 - PATCH AND REPAIR ALL EXISTING SURFACES WHICH ARE TO RECEIVE NEW FINISHES AND SURFACES AFFECTED OR DAMAGED BY DEMOLITION.
 - REPAIR ALL EXISTING CONSTRUCTION WHERE DEMOLITION OCCURS TO MATCH EXISTING CONSTRUCTION UNLESS OTHERWISE INDICATED. REPAIRS ARE TO INCLUDE, BUT ARE NOT NECESSARILY LIMITED TO EXISTING CEILINGS, FLOORS & ANY ADJOINING OR ADJUTING WALLS.
 - THE CONTRACTOR SHALL NOTIFY THE CONTRACT ADMINISTRATOR OF ALL CONDITIONS UNCOVERED DURING DEMOLITION WHICH MAY ADVERSELY AFFECT THE INSTALLATION OR PERFORMANCE OF NEW CONSTRUCTION OR FINISHES.
 - MAINTAIN THE INTEGRITY OF EXISTING FIRE RATED SEPARATIONS WHERE DEMOLITION AND/OR NEW CONSTRUCTION OCCURS. APPLY APPROVED FIRESTOPPING AS REQUIRED.
 - REVIEW ASBESTOS MANAGEMENT PLAN FOR ALL BUILDING AREAS WHERE DEMOLITION OCCURS OR CEILING ACCESS IS REQUIRED.
 - REMOVE ALL EXISTING SIGNAGE AND TURN OVER TO CONTRACT ADMINISTRATOR.

500-136 Market Ave Winnipeg, Manitoba Canada: R3B 0P4 t: (204) 942-0681 f: (204) 943-8676 www.lm-architects.com	
3	ISSUED FOR CONSTRUCTION RS 2016.03.29
2	ISSUED FOR 95% REVIEW SUBMISSION RS 2016.03.18
1	ISSUED FOR 60% REVIEW SUBMISSION RS 2016.03.08

No.	REVISION/DESCRIPTION	BY	DATE

DRAWN	CHECKED	DESIGNED	APPROVED

THE CITY OF WINNIPEG
PLANNING, PROPERTY AND
DEVELOPMENT DEPARTMENT
MUNICIPAL ACCOMMODATIONS DIVISION
3-65 GARRY STREET, R3C 4K4

PROJECT
RBC CONVENTION CENTRE
ARCHITECTURAL RESTORATION OF THE
NORTH RBC CONVENTION CENTRE SKYWALK
375 YORK AVENUE, WINNIPEG, MB BID OPP. 218-2016

SHEET TITLE
PLAN DETAILS

SCALE	PROJECT No:	SHEET No:
AS SHOWN	2015-075	A5