

**REFERENCE NOTES**

- A. PAVEMENT DIMENSIONS ARE TO BACK OF CURB
- B. BASELINE IS CENTRE LINE RIGHT-OF-WAY
- C. PROPERTY LINES OBTAINED FROM CITY OF WINNIPEG L.B.I.S., AND NO SCALE FACTOR WAS APPLIED
- D. REFER TO AECOM FIELD BOOK NO. 4911

**CONSTRUCTION NOTES**

1. PLACE NEW ASPHALTIC PAVEMENT TYPE 1A (85mm AVG. THICKNESS)
2. REMOVE EXISTING CONCRETE PAVEMENT AND CONSTRUCT NEW 150mm REINFORCED CONCRETE PAVEMENT
3. CONSTRUCT NEW 150mm REINFORCED CONCRETE PAVEMENT
4. RENEW EXISTING 100mm CONCRETE SIDEWALK
5. RENEW CONCRETE BARRIER CURB (150mm REVEAL HT. DOWELLED)
6. CONSTRUCT NEW CONCRETE BARRIER CURB (150mm HT. SEPARATE)
7. CONSTRUCT NEW CONCRETE MOUNTABLE CURB (120mm HT. INTEGRAL)
8. CONSTRUCT RAMP CURB (10mm HT. INTEGRAL)
9. REMOVE EXISTING FRAME AND COVER AND INSTALL NEW FRAME AND SOLID COVER (AP-004 AND AP-005)
10. ADJUST EXISTING MANHOLE/CATCHBASIN TO GRADE
11. REMOVE EXISTING CATCHBASIN
12. INSTALL NEW MOUNTABLE CURB AND GUTTER INLET (AP-009 AND AP-011) c/w CATCHBASIN (SD-024) AND CONNECT TO EXISTING LEAD
13. INSTALL CAST IRON RING
14. REGRADE EXISTING GRAVEL SURFACE
15. REMOVE EXISTING MANHOLE AND INSTALL NEW MANHOLE AND CONNECT TO EXISTING 300mm Ø SEWER (SD-010)



**METRIC**  
WHOLE NUMBERS INDICATE MILLIMETRES  
DECIMALIZED NUMBERS INDICATE METRES

EXISTING	LEGEND - PLAN	PROPOSED	EXISTING	LEGEND - PLAN	PROPOSED	EXISTING	LEGEND - PROFILE	PROPOSED
150 mm W.M.	WATERMAIN	150 mm W.M.	HYDRO	CONCRETE	PROPERTY LINE	—X—	C PROFILE	—X—
300mm L.D.S.	HYDRANT	300mm L.D.S.	M.T.S.	ASPHALT	PROPERTY LINE	—X—	OUTSIDE GUTTER	—X—
250mm W.W.S.	VALVE	250mm W.W.S.	CONCRETE	ASPHALT	PROPERTY LINE	—X—	INSIDE GUTTER	—X—
	LAND DRAINAGE SEWER		ASPHALT	ASPHALT	PROPERTY LINE	—X—	N/W PROPERTY LINE	—X—
	WASTEWATER SEWER		PROPERTY LINE	PROPERTY LINE	PROPERTY LINE	—X—	S/E PROPERTY LINE	—X—
	MANHOLE		SURVEY BAR	SURVEY BAR	SURVEY BAR	—X—		
	CATCH BASIN		ELEVATION	ELEVATION	ELEVATION	—X—		
	CATCH PIT		TREE	TREE	TREE	—X—		
	JUNCTIONS		SIDEWALK RAMP	SIDEWALK RAMP	SIDEWALK RAMP	—X—		
	CULVERT		CONCRETE SIDEWALK	CONCRETE SIDEWALK	CONCRETE SIDEWALK	—X—		
	GAS		FENCE	FENCE	FENCE	—X—		

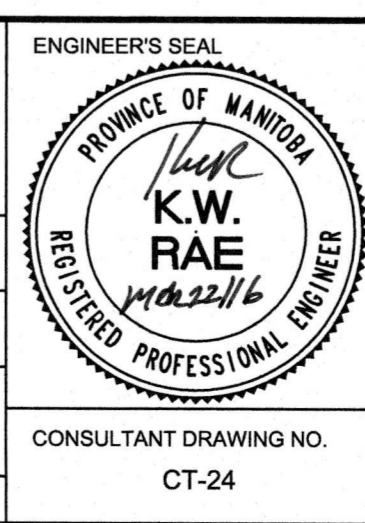
**LOCATION APPROVED UNDERGROUND STRUCTURES**

SUPV. U/G STRUCTURES COMMITTEE DATE

**NOTE:**  
LOCATION OF UNDERGROUND STRUCTURES AS SHOWN ARE BASED ON THE BEST INFORMATION AVAILABLE, BUT NO GUARANTEE IS GIVEN THAT ALL EXISTING UTILITIES ARE SHOWN OR THAT THE GIVEN LOCATIONS ARE EXACT. CONFIRMATION OF EXISTENCE AND EXACT LOCATION OF ALL SERVICES MUST BE OBTAINED FROM THE INDIVIDUAL UTILITIES BEFORE PROCEEDING WITH CONSTRUCTION.

B.M. 35 - 017 N.W. Cor. Higgins Ave. & Gomes St. Tbt. In S. Conc. foundation No.109 Higgins Ave., 1.5m W. & ELEV. 230.730 1.0m below brick of S.E. Cor. of Bldg.

DESIGNED BY	SS	CHECKED BY	BC/KWR
DRAWN BY	JC/SS	APPROVED BY	
HOR. SCALE:	1:250	RELEASED FOR CONSTRUCTION BY:	
VERTICAL:	1:10	DATE	MAR 22/16
0	ISSUED FOR TENDER	03/22/2016	BC
A	ISSUED FOR REVIEW	03/16/2016	BC
NO.	REVISIONS	DATE	BY



**THE CITY OF WINNIPEG**  
PUBLIC WORKS DEPARTMENT  
ENGINEERING DIVISION

2016 LOCAL STREET RENEWAL PROGRAM

ACORES STREET - HIGGINS AVENUE TO NORTH LIMIT  
REHABILITATION  
HIGGINS AVENUE TO STATION 0+065

CITY DRAWING NUMBER  
SHEET 24 OF 24

CONSULTANT DRAWING NO. CT-24