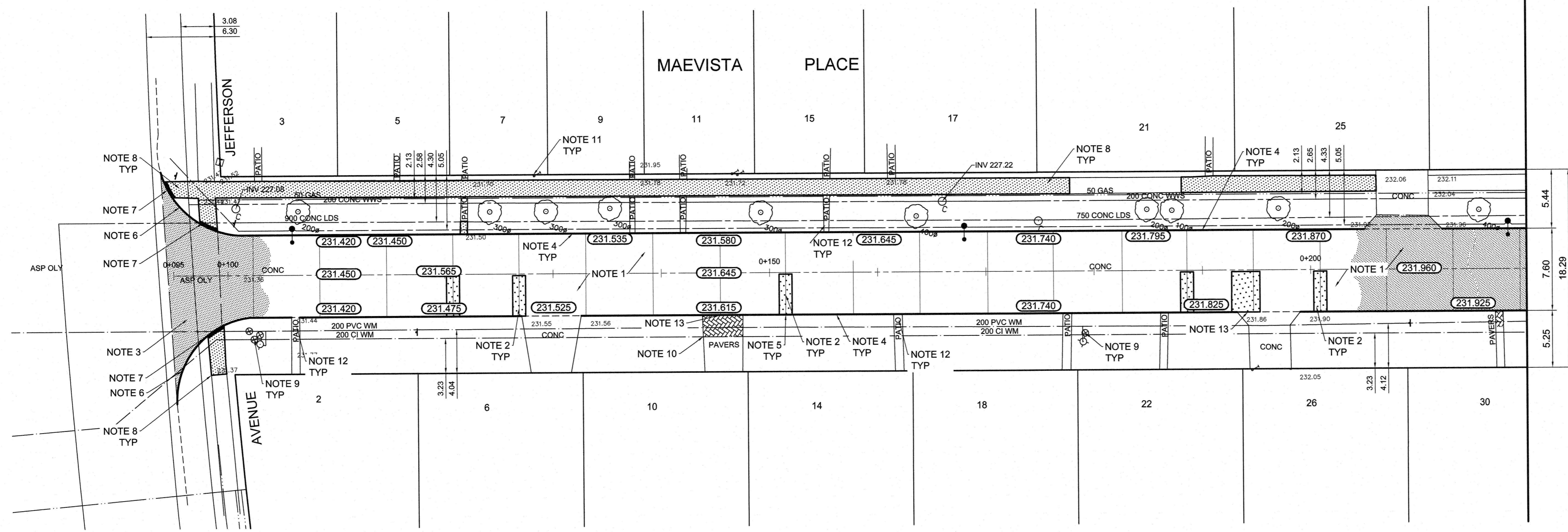


MATCHLINE 0+220



REFERENCE NOTES

- A. PAVEMENT DIMENSIONS ARE TO BACK OF CURB
- B. BASELINE IS CENTRE LINE RIGHT-OF-WAY
- C. PROPERTY LINES OBTAINED FROM CITY OF WINNIPEG L.B.I.S., AND NO SCALE FACTOR WAS APPLIED
- D. REFER TO AECOM FIELD BOOK NO. 4914

CONSTRUCTION NOTES

1. PLACE NEW ASPHALTIC PAVEMENT TYPE 1A (AVG THICKNESS 85mm)
2. REMOVE EXISTING CONCRETE PAVEMENT AND CONSTRUCT NEW 150mm REINFORCED CONCRETE PAVEMENT c/w 85mm ASPHALT OVERLAY
3. REMOVE EXISTING ASPHALT AND CONSTRUCT NEW ASPHALTIC PAVEMENT OVERLAY TYPE 1A (AVG THICKNESS 85mm)
4. REMOVE EXISTING LIP CURB AND CONSTRUCT NEW CONCRETE BARRIER CURB (100mm REVEAL HT. DOWELLED)
5. REMOVE EXISTING LIP CURB AND CONSTRUCT NEW CONCRETE BARRIER CURB (100mm REVEAL HT. SEPARATE)
6. REMOVE EXISTING CURB (BARRIER/LIP) AND CONSTRUCT NEW CONCRETE MODIFIED BARRIER CURB (100mm REVEAL HT. DOWELLED)
7. CONSTRUCT CURB RAMP (10mm HT. INTEGRAL)
8. RENEW EXISTING 100mm CONCRETE SIDEWALK
9. ADJUST EXISTING WATER VALVE TO GRADE
10. REGRADE PAVING STONES
11. ADJUST CURB STOP
12. ADJUST EXISTING PATIO BLOCKS
13. CONSTRUCT LIP CURB (40mm HT. INTEGRAL)



METRIC
WHOLE NUMBERS INDICATE MILLIMETRES
DECIMALIZED NUMBERS INDICATE METRES

EXISTING	LEGEND - PLAN	PROPOSED	EXISTING	LEGEND - PLAN	PROPOSED	EXISTING	LEGEND - PROFILE	PROPOSED
	WATERMAIN			HYDRO			OUTSIDE GUTTER	
	HYDRANT VALVE			CONCRETE			INSIDE GUTTER	
	LAND DRAINAGE SEWER			PROPERTY LINE			N/W PROPERTY LINE	
	WASTEWATER SEWER			MANHOLE			CATCH PIT	
	JUNCTIONS			GAS			CONCRETE SIDEWALK	
	EXISTING			EXISTING			EXISTING	

LOCATION APPROVED UNDERGROUND STRUCTURES

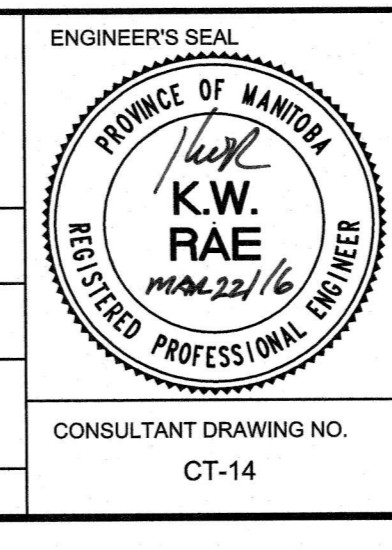
SUPV. U/G STRUCTURES COMMITTEE DATE

NOTE:
LOCATION OF UNDERGROUND STRUCTURES AS SHOWN ARE BASED ON THE BEST INFORMATION AVAILABLE. BUT NO GUARANTEE IS GIVEN THAT ALL EXISTING UTILITIES ARE SHOWN OR THAT THE GIVEN LOCATIONS ARE EXACT. CONFIRMATION OF EXISTENCE AND EXACT LOCATION OF ALL SERVICES MUST BE OBTAINED FROM THE INDIVIDUAL UTILITIES BEFORE PROCEEDING WITH CONSTRUCTION.

B.M. 15 - 052	BR664 Public Lane N. of Massena Pl. & W. side Jefferson Ave., 10m on top of 0.00, sig 2.4 m iron tube, 3.8 m N. well & 8.8 m E. of E. well by No. 1288/1270, Jefferson Ave. on 1 m N. of S. L. of public lane & 0.2 m E. of W. L. of Jefferson.
ELEV. 232.031	
DESIGNED BY	SS
CHECKED BY	BC/KWR
DRAWN BY	JC/SS
APPROVED BY	
HOR. SCALE:	1:250
VERTICAL:	1:10
RELEASSED FOR CONSTRUCTION BY:	
DATE	MAR 22/16
NO. REVISIONS	
DATE	
BY	
DATE	

AECOM

DESIGNED BY: SS
CHECKED BY: BC/KWR
DRAWN BY: JC/SS
APPROVED BY:
HOR. SCALE: 1:250
VERTICAL: 1:10
RELEASSED FOR CONSTRUCTION BY:
DATE: MAR 22/16



THE CITY OF WINNIPEG
PUBLIC WORKS DEPARTMENT
ENGINEERING DIVISION

2016 LOCAL STREET RENEWAL PROGRAM

MAEVISTA PLACE - JEFFERSON AVENUE TO BLECHNER DRIVE
REHABILITATION
JEFFERSON AVENUE TO STATION 0+220

CITY DRAWING NUMBER: SHEET 14 OF 24

CONSULTANT DRAWING NO. CT-14