

- REFERENCE NOTES**
- PAVEMENT DIMENSIONS ARE TO BACK OF CURB
 - BASELINE IS CENTRE LINE RIGHT-OF-WAY
 - PROPERTY LINES OBTAINED FROM CITY OF WINNIPEG L.B.I.S., AND NO SCALE FACTOR WAS APPLIED
 - REFER TO AECOM FIELD BOOK NO. XXXX
- CONSTRUCTION NOTES**
- PLACE NEW ASPHALTIC PAVEMENT TYPE 1A (AVG. THICKNESS 85mm)
 - REMOVE EXISTING CONCRETE PAVEMENT AND CONSTRUCT NEW 150mm REINFORCED CONCRETE PAVEMENT c/w 85mm ASPHALT OVERLAY
 - RENEW EXISTING CONCRETE BARRIER CURB (100mm REVEAL HT. DOWELLED)
 - CONSTRUCT NEW CONCRETE BARRIER CURB (100mm REVEAL HT. SEPARATE)
 - REMOVE EXISTING BARRIER CURB AND CONSTRUCT CONCRETE MODIFIED BARRIER CURB (100mm REVEAL HT. DOWELLED)
 - RENEW EXISTING CONCRETE MODIFIED BARRIER CURB (100mm REVEAL HT. DOWELLED)
 - CONSTRUCT CURB RAMP (10mm HT. INTEGRAL)
 - RENEW EXISTING 100mm CONCRETE SIDEWALK
 - REMOVE EXISTING CATCHPIT
 - INSTALL NEW CURB AND GUTTER INLET c/w CATCHPIT (SD-023) AND CONNECT NEW LEAD TO EXISTING CATCHBASIN
 - INSTALL NEW CURB AND GUTTER INLET c/w CATCHPIT (SD-023) AND CONNECT NEW LEAD TO NEW CATCHBASIN
 - REMOVE FRAME AND COVER AND INSTALL NEW FRAME AND SOLID COVER (AP-004/AP-005)
 - ADJUST MANHOLE/CATCHBASIN TO GRADE
 - INSTALL CAST IRON RISER RING
 - REMOVE EXISTING CATCHBASIN AND INSTALL NEW CATCHBASIN (SD-024) c/w FRAME AND SOLID COVER (AP-004/AP-005)
 - ADJUST EXISTING WATER VALVE TO GRADE
 - ADJUST CURB STOP



METRIC
WHOLE NUMBERS INDICATE MILLIMETRES
DECIMALIZED NUMBERS INDICATE METRES

EXISTING	LEGEND - PLAN	PROPOSED	EXISTING	LEGEND - PLAN	PROPOSED	EXISTING	LEGEND - PROFILE	PROPOSED
150 mm W.M.	WATERMAIN	150 mm W.M.	HYDRO	M.T.S.	C PROFILE	-X-	OUTSIDE GUTTER	---
300mm L.D.S.	LAND DRAINAGE SEWER	300mm L.D.S.	CONCRETE	ASPHALT	PROPERTY LINE	---	INSIDE GUTTER	---
250mm W.W.S.	WASTEWATER SEWER	250mm W.W.S.	PROPERTY LINE	SURVEY BAR	ELEVATION	---	N/W PROPERTY LINE	---
○	MANHOLE	●	ELEVATION	(35.750)	TREE	---	S/E PROPERTY LINE	---
□	CATCH BASIN	▽	SIDEWALK RAMP	CONCRETE SIDEWALK	FENCE	---		
▽	JUNCTIONS							
---	CULVERT							
---	GAS							

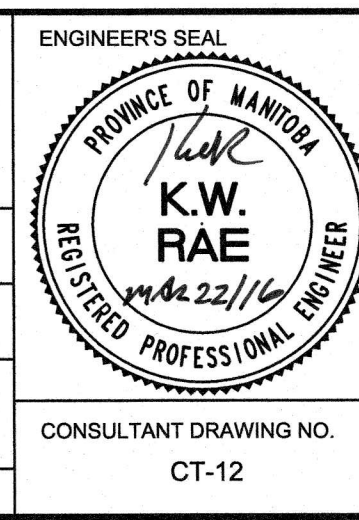
LOCATION APPROVED UNDERGROUND STRUCTURES

SUPV. / UG STRUCTURES COMMITTEE DATE

NOTE:
LOCATION OF UNDERGROUND STRUCTURES AS SHOWN ARE BASED ON THE BEST INFORMATION AVAILABLE. BUT NO GUARANTEE IS GIVEN THAT ALL EXISTING UTILITIES ARE SHOWN OR THAT THE GIVEN LOCATIONS ARE EXACT. CONFIRMATION OF EXISTENCE AND EXACT LOCATION OF ALL SERVICES MUST BE OBTAINED FROM THE INDIVIDUAL UTILITIES BEFORE PROCEEDING WITH CONSTRUCTION.

B.M. 25 - 026 N.W. Cor. Machray Ave. & Robertson St., Tblt. in most Ely. Conc. foundation of No. 550 Robertson St., ELEV. 232.486 1m N. & 0.2m below Conc. block of most S.E. Cor.

DESIGNED BY	BC/SS	CHECKED BY	KWR
DRAWN BY	JC/SS	APPROVED BY	
HOR. SCALE:	1:250	RELEASED FOR CONSTRUCTION BY:	
VERTICAL:	1:10	DATE	MAR 22/16
0 ISSUED FOR TENDER	03/22/2016	BC	
A ISSUED FOR REVIEW	03/16/2016	BC	
NO. REVISIONS	DATE	BY	DATE



THE CITY OF WINNIPEG
PUBLIC WORKS DEPARTMENT
ENGINEERING DIVISION

2016 LOCAL STREET RENEWAL PROGRAM

MACHRAY AVENUE - MCPHILLIPS STREET TO ROBERTSON STREET
REHABILITATION
STATION 0+225 TO STATION 0+345

CITY DRAWING NUMBER
SHEET 12 OF 24

CONSULTANT DRAWING NO. CT-12

