

REFERENCE NOTES

- A. PAVEMENT DIMENSIONS ARE TO BACK OF CURB
- B. BASELINE IS CENTRE LINE RIGHT-OF-WAY
- C. PROPERTY LINES OBTAINED FROM CITY OF WINNIPEG L.B.I.S., AND NO SCALE FACTOR WAS APPLIED
- D. REFER TO AECOM FIELD BOOK NO. 4911

CONSTRUCTION NOTES

1. PLACE NEW ASPHALTIC PAVEMENT TYPE 1A (AVG. THICKNESS 85mm)
2. REMOVE EXISTING CONCRETE PAVEMENT AND CONSTRUCT NEW 150mm REINFORCED CONCRETE PAVEMENT c/w 85mm ASPHALT OVERLAY
3. RENEW EXISTING CONCRETE BARRIER CURB (100mm REVEAL HT. DOWELLED)
4. CONSTRUCT NEW CONCRETE BARRIER CURB (100mm REVEAL HT. SEPARATE)
5. REMOVE EXISTING BARRIER CURB AND CONSTRUCT NEW CONCRETE MODIFIED BARRIER CURB (100mm REVEAL HT. DOWELLED)
6. RENEW EXISTING CONCRETE MODIFIED BARRIER CURB (100mm REVEAL HT. DOWELLED)
7. CONSTRUCT CURB RAMP (10mm HT. INTEGRAL)
8. RENEW EXISTING 100mm CONCRETE SIDEWALK
9. REMOVE EXISTING CATCHPIT
10. INSTALL NEW CURB AND GUTTER INLET c/w CATCHPIT (SD-023) AND CONNECT NEW LEAD TO EXISTING CATCHBASIN
11. INSTALL NEW CURB AND GUTTER INLET c/w CATCHPIT (SD-023) AND CONNECT NEW LEAD TO NEW CATCHBASIN
12. REMOVE FRAME AND COVER AND INSTALL NEW FRAME AND SOLID COVER (AP-004/AP-005)
13. ADJUST MANHOLE/CATCHBASIN TO GRADE
14. INSTALL CAST IRON RISER RING
15. REMOVE EXISTING CATCHBASIN AND INSTALL NEW CATCHBASIN (SD-024) c/w FRAME AND SOLID COVER (AP-004/AP-005)
16. ADJUST EXISTING WATER VALVE TO GRADE
17. ADJUST CURB STOP



METRIC.
WHOLE NUMBERS INDICATE MILLIMETRES
DECIMALIZED NUMBERS INDICATE METRES

EXISTING	LEGEND - PLAN	PROPOSED	EXISTING	LEGEND - PLAN	PROPOSED	EXISTING	LEGEND - PROFILE	PROPOSED
150 mm W.M.	WATERMAIN	150 mm W.M.	HYDRO	M.T.S.	C PROFILE	X	OUTSIDE GUTTER	
300mm L.D.S.	LAND DRAINAGE SEWER	300mm L.D.S.	CONCRETE	ASPHALT	PROPERTY LINE	□	INSIDE GUTTER	
250mm W.W.S.	WASTEWATER SEWER	250mm W.W.S.	PROPERTY LINE	SURVEY BAR	ELEVATION	○	N/W PROPERTY LINE	
○	MANHOLE	●	CONCRETE SIDEWALK	FENCE		◇	S/E PROPERTY LINE	
□	CATCH BASIN	▽	SURVEY BAR	ELEVATION	(35.750)	○		
▽	CATCH PIT	▽	TREE					
+	JUNCTIONS	+	SIDEWALK RAMP					
+	CULVERT	+	CONCRETE SIDEWALK					
+	GAS	+	FENCE					

LOCATION APPROVED UNDERGROUND STRUCTURES

SUPV. U/G STRUCTURES COMMITTEE DATE

NOTE:
LOCATION OF UNDERGROUND STRUCTURES AS SHOWN ARE BASED ON THE BEST INFORMATION AVAILABLE. BUT NO GUARANTEE IS GIVEN THAT ALL EXISTING UTILITIES ARE SHOWN OR THAT THE GIVEN LOCATIONS ARE EXACT. CONFIRMATION OF EXISTENCE AND EXACT LOCATION OF ALL SERVICES MUST BE OBTAINED FROM THE INDIVIDUAL UTILITIES BEFORE PROCEEDING WITH CONSTRUCTION.

B.M. 25 - 026 N.W. Cor. Machray Ave. & Robertson St., Tbl. in most Ely. Conc. Foundation of No. 550 Robertson St. ELEV. 232.486 1m N. & 0.2m below Conc. block of most S.E. Cor.

ISSUED FOR TENDER	03/22/2016	BC
ISSUED FOR REVIEW	03/16/2016	BC
NO. REVISIONS	DATE	BY

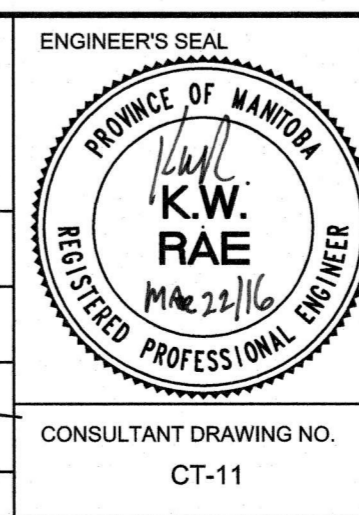
AECOM

DESIGNED BY: SS
DRAWN BY: JC/SS

CHECKED BY: BC/KWR
APPROVED BY:

HOR. SCALE: 1:250
VERTICAL: 1:10

RELEASED FOR CONSTRUCTION BY:



THE CITY OF WINNIPEG
PUBLIC WORKS DEPARTMENT
ENGINEERING DIVISION

2016 LOCAL STREET RENEWAL PROGRAM

MACHRAY AVENUE - MCPHILLIPS STREET TO ROBERTSON STREET
REHABILITATION
STATION 0+105 TO STATION 0+225

CITY DRAWING NUMBER
SHEET 11 OF 24

CONSULTANT DRAWING NO. CT-11