

- REFERENCE NOTES**
- A. PAVEMENT DIMENSIONS ARE TO BACK OF CURB
  - B. BASELINE IS CENTRE LINE RIGHT-OF-WAY
  - C. PROPERTY LINES OBTAINED FROM CITY OF WINNIPEG L.B.I.S., AND NO SCALE FACTOR WAS APPLIED
  - D. REFER TO AECOM FIELD BOOK NO. 4910

- CONSTRUCTION NOTES**
1. PLACE NEW ASPHALTIC PAVEMENT TYPE 1A (AVG THICKNESS 85mm)
  2. REMOVE EXISTING CONCRETE PAVEMENT AND CONSTRUCT NEW 200mm REINFORCED CONCRETE PAVEMENT c/w 85mm ASPHALT OVERLAY
  3. REMOVE EXISTING BARRIER CURB AND CONSTRUCT NEW BARRIER CURB (100mm REVEAL HT. DOWELLED)
  4. CONSTRUCT NEW BARRIER CURB (100mm HT. SEPARATE)
  5. ADJUST EXISTING MANHOLE/CATCH BASIN TO GRADE
  6. REPLACE CURB AND GUTTER INLET FRAME (AP-008/AP-009)
  7. CONSTRUCT NEW LIP CURB (40mm HT. INTEGRAL)
  8. REMOVE EXISTING CONCRETE PAVEMENT AND CONSTRUCT NEW 150mm REINFORCED CONCRETE PAVEMENT
  9. ADJUST EXISTING WATER VALVE TO GRADE



**METRIC**  
WHOLE NUMBERS INDICATE MILLIMETRES  
DECIMALIZED NUMBERS INDICATE METRES

EXISTING	LEGEND - PLAN	PROPOSED	EXISTING	LEGEND - PLAN	PROPOSED	EXISTING	LEGEND - PROFILE	PROPOSED
	WATERMAIN			HYDRO				
	LAND DRAINAGE SEWER			CONCRETE				
	WASTEWATER SEWER			ASPHALT				
	MANHOLE			PROPERTY LINE				
	CATCH BASIN			SURVEY BAR				
	CATCH PIT			ELEVATION				
	JUNCTIONS			TREE				
	CULVERT			SIDEWALK RAMP				
	GAS			CONCRETE SIDEWALK				
	FENCE			FENCE				

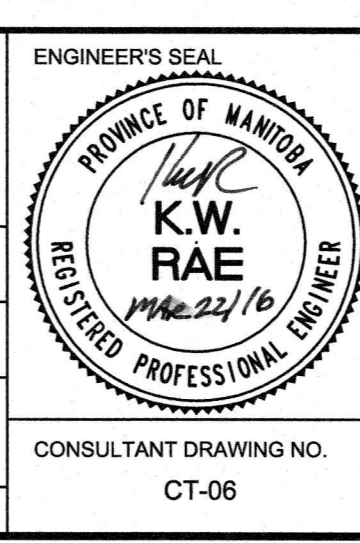
**LOCATION APPROVED UNDERGROUND STRUCTURES**

SUPV. U/G STRUCTURES COMMITTEE DATE

**NOTE:**  
LOCATION OF UNDERGROUND STRUCTURES AS SHOWN ARE BASED ON THE BEST INFORMATION AVAILABLE, BUT NO GUARANTEE IS GIVEN THAT ALL EXISTING UTILITIES ARE SHOWN OR THAT THE GIVEN LOCATIONS ARE EXACT. CONFIRMATION OF EXISTENCE AND EXACT LOCATION OF ALL SERVICES MUST BE OBTAINED FROM THE INDIVIDUAL UTILITIES BEFORE PROCEEDING WITH CONSTRUCTION.

NO.	REVISIONS	DATE	BY	DATE
0	ISSUED FOR TENDER	03/22/2016	BC	
A	ISSUED FOR REVIEW	03/16/2016	BC	

<b>AECOM</b>	
DESIGNED BY: BC/SS	CHECKED BY: BC/KWR
DRAWN BY: JT/JC/SS	APPROVED BY:
HOR. SCALE: 1:250	RELEASED FOR CONSTRUCTION BY:
VERTICAL: 1:10	DATE: MAR 22/16



**THE CITY OF WINNIPEG**  
PUBLIC WORKS DEPARTMENT  
ENGINEERING DIVISION

2016 LOCAL STREET RENEWAL PROGRAM

EAGLE DRIVE - BROOKSIDE BLVD. TO OAKPOINT HWY. REHABILITATION STATION 0+700 TO STATION 0+800

CITY DRAWING NUMBER SHEET 06 OF 24

CONSULTANT DRAWING NO. CT-06