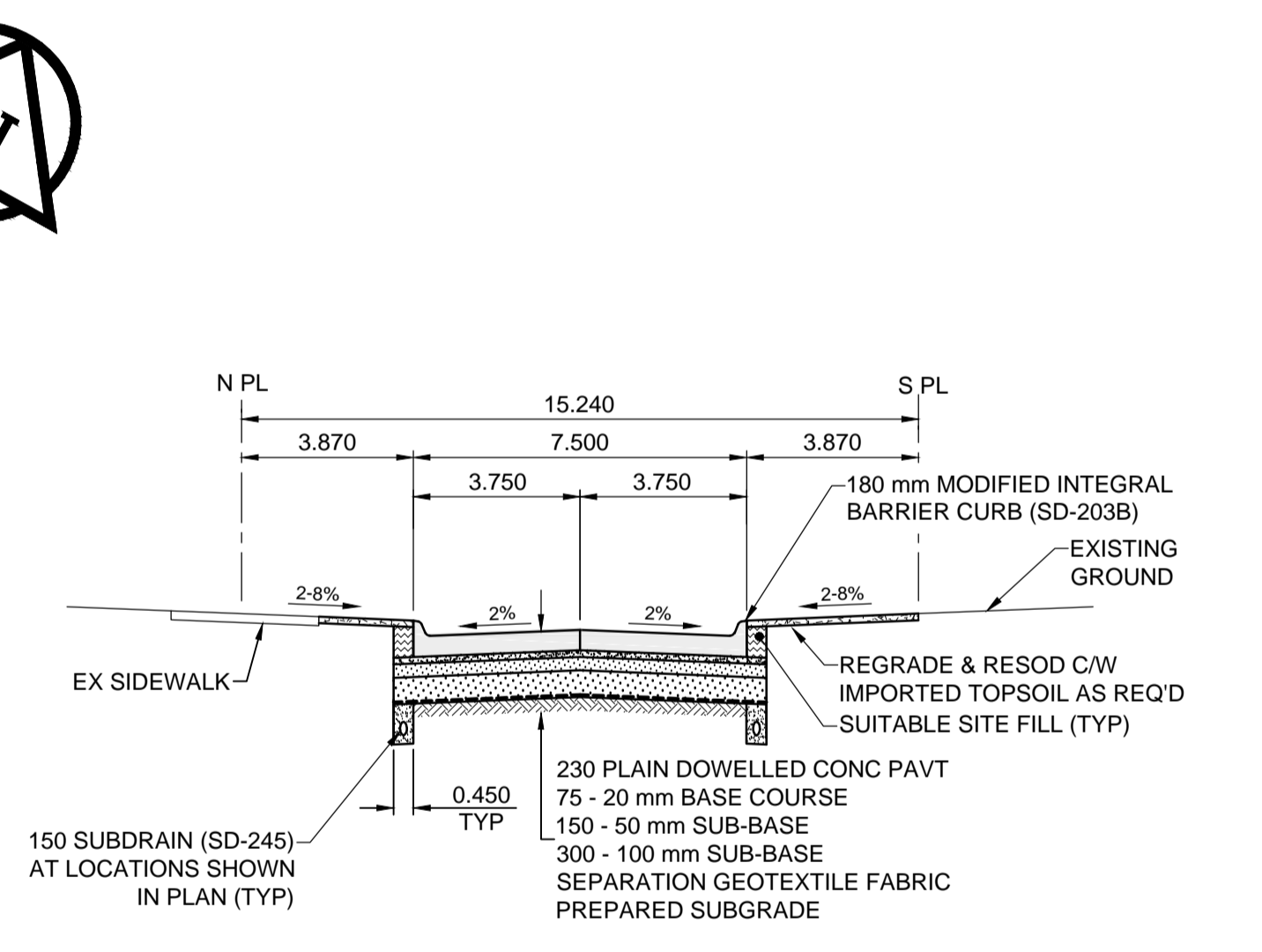
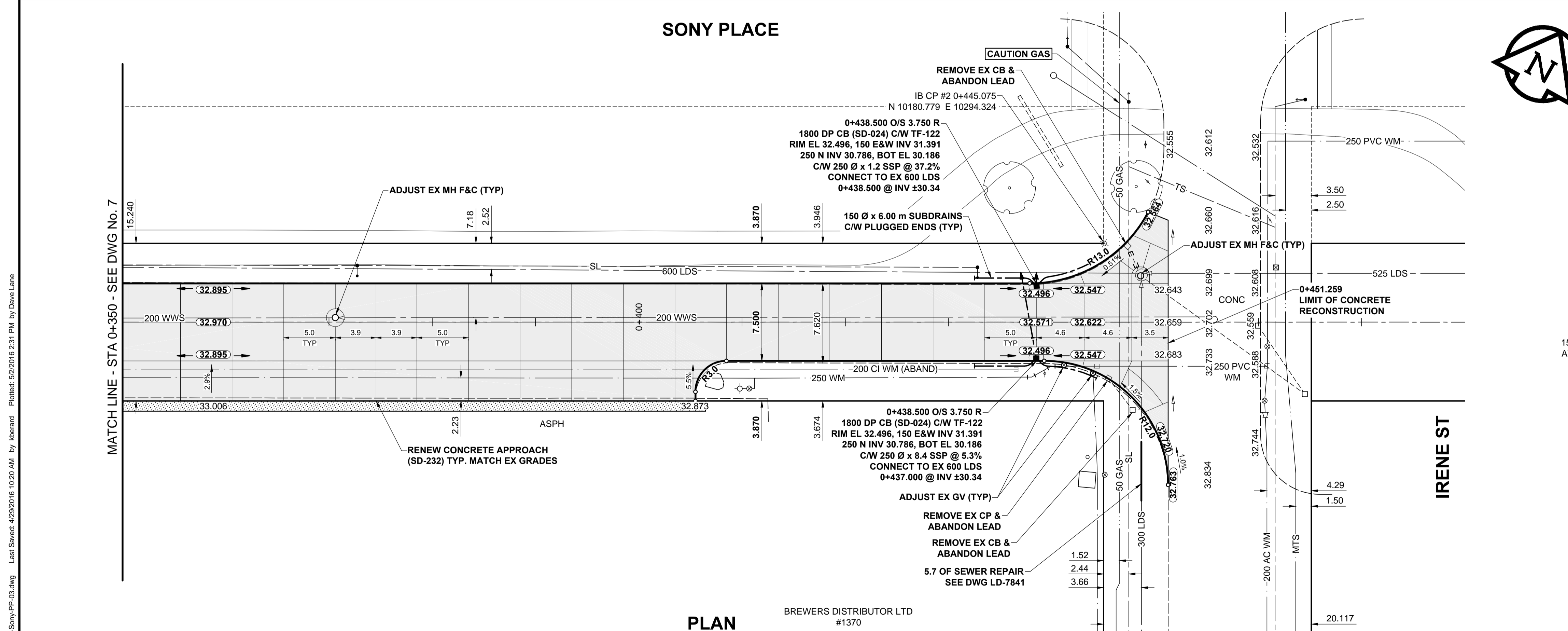
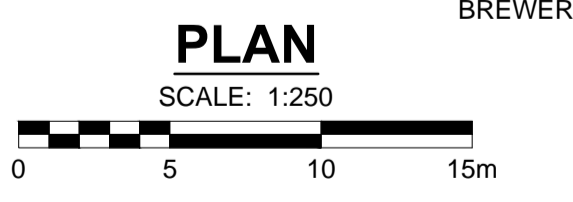


- NOTES**
- ADJUST MH AND CB RIMS TO NEW GRADES.
  - LAMP STANDARDS, HYDRO POLES, AND ANCHORS THAT REQUIRE TEMPORARY SUPPORT, REMOVAL OR REPLACEMENT, TO BE DONE SO AT THE EXPENSE OF THE CONTRACTOR AS NECESSARY.
  - CONTRACTOR TO REGRADE/RENEW EXISTING PRIVATE SIDEWALKS TO LIMITS AS SHOWN. SIDEWALKS TO BE RENEWED WITH CONCRETE UNLESS NOTED OTHERWISE.
  - CONTRACTOR TO TAKE PRECAUTIONARY STEPS TO PROTECT EXISTING TREES WITHIN THE LIMITS OF CONSTRUCTION FROM DAMAGE FROM CONSTRUCTION ACTIVITIES AS OUTLINED IN THE SPECIFICATIONS.
  - CONTRACTOR TO CONFIRM THE LOCATION OF ALL UTILITIES/SERVICES IN THE FIELD PRIOR TO CONSTRUCTION.
  - CB SD-023 & SD-024 OFFSETS ARE DIMENSIONED TO BOC. CB SD-025 OFFSETS ARE DIMENSIONED O/C.
  - IN GENERAL, PAVEMENT AND SIDEWALK AREAS TO BE REMOVED. MATCH RECONSTRUCTION LIMITS.
  - REFER TO BID OPPORTUNITY FOR DETAILS REGARDING TRAFFIC MANAGEMENT.
  - ALL EXISTING LONG WATER SERVICES TO BE INSULATED (SD-018). REFER TO BID OPPORTUNITY FOR FURTHER REQUIREMENTS.
  - MODIFIED BARRIER CURB & GUTTER INLET FRAME & COVER TF-122.
  - ADD 200.000m TO ABBREVIATED ELEVATIONS TO OBTAIN GEODETIC ELEVATIONS.



**METRIC**  
WHOLE NUMBERS INDICATE MILLIMETRES  
DECIMALIZED NUMBERS INDICATE METRES



EXISTING	LEGEND - PLAN	NEW	EXISTING	LEGEND - PLAN	NEW	EXISTING	LEGEND - PLAN	NEW
○	MANHOLE	●	□	CATCH BASIN/CATCH PIT	■	CONCRETE PAVEMENT	▨	CONCRETE PAVEMENT
△	CURB INLET WITH BOX	▲	□	CONC SIDEWALK/MEDIAN	▩	CONC SIDEWALK/MEDIAN	▩	CONC SIDEWALK/MEDIAN
○	TREE	△	△	ASPHALT PAVEMENT	▩	ASPHALT PAVEMENT	▩	ASPHALT PAVEMENT
⊕	TEST HOLE	○	○	PAVING STONE	▩	PAVING STONE	▩	PAVING STONE
⊕	PROPERTY LINE	○	○	GRAVEL	▩	GRAVEL	▩	GRAVEL
⊕	SURVEY BAR	○	○	RAMP CURB	▩	RAMP CURB	▩	RAMP CURB
⊕	FENCE	○	○	PLANING/REMOVAL	▩	PLANING/REMOVAL	▩	PLANING/REMOVAL
⊕	BOC/EDGE OF PAVEMENT	○	○	LOCATION APPROVED UNDERGROUND STRUCTURES	▩	LOCATION APPROVED UNDERGROUND STRUCTURES	▩	LOCATION APPROVED UNDERGROUND STRUCTURES
⊕	ELEVATION	○	○	NOTE:	▩	NOTE:	▩	NOTE:
⊕	TRAFFIC SIGN	○	○	LOCATION OF UNDERGROUND STRUCTURES AS SHOWN ARE BASED ON THE BEST INFORMATION AVAILABLE BUT NO GUARANTEE IS GIVEN THAT ALL EXISTING UTILITIES ARE SHOWN OR THAT THE GIVEN LOCATIONS ARE EXACT. CONFIRMATION OF EXISTENCE AND EXACT LOCATION OF ALL SERVICES MUST BE OBTAINED FROM THE INDIVIDUAL UTILITIES BEFORE PROCEEDING WITH CONSTRUCTION.	▩	LOCATION OF UNDERGROUND STRUCTURES AS SHOWN ARE BASED ON THE BEST INFORMATION AVAILABLE BUT NO GUARANTEE IS GIVEN THAT ALL EXISTING UTILITIES ARE SHOWN OR THAT THE GIVEN LOCATIONS ARE EXACT. CONFIRMATION OF EXISTENCE AND EXACT LOCATION OF ALL SERVICES MUST BE OBTAINED FROM THE INDIVIDUAL UTILITIES BEFORE PROCEEDING WITH CONSTRUCTION.	▩	LOCATION OF UNDERGROUND STRUCTURES AS SHOWN ARE BASED ON THE BEST INFORMATION AVAILABLE BUT NO GUARANTEE IS GIVEN THAT ALL EXISTING UTILITIES ARE SHOWN OR THAT THE GIVEN LOCATIONS ARE EXACT. CONFIRMATION OF EXISTENCE AND EXACT LOCATION OF ALL SERVICES MUST BE OBTAINED FROM THE INDIVIDUAL UTILITIES BEFORE PROCEEDING WITH CONSTRUCTION.

LEGEND - PLAN	NEW	LEGEND - PLAN	NEW	LEGEND - PLAN	NEW
○	MANHOLE	●	□	CATCH BASIN/CATCH PIT	■
△	CURB INLET WITH BOX	▲	□	CONC SIDEWALK/MEDIAN	▩
○	TREE	△	△	ASPHALT PAVEMENT	▩
⊕	TEST HOLE	○	○	PAVING STONE	▩
⊕	PROPERTY LINE	○	○	GRAVEL	▩
⊕	SURVEY BAR	○	○	RAMP CURB	▩
⊕	FENCE	○	○	PLANING/REMOVAL	▩
⊕	BOC/EDGE OF PAVEMENT	○	○	LOCATION APPROVED UNDERGROUND STRUCTURES	▩
⊕	ELEVATION	○	○	NOTE:	▩
⊕	TRAFFIC SIGN	○	○	LOCATION OF UNDERGROUND STRUCTURES AS SHOWN ARE BASED ON THE BEST INFORMATION AVAILABLE BUT NO GUARANTEE IS GIVEN THAT ALL EXISTING UTILITIES ARE SHOWN OR THAT THE GIVEN LOCATIONS ARE EXACT. CONFIRMATION OF EXISTENCE AND EXACT LOCATION OF ALL SERVICES MUST BE OBTAINED FROM THE INDIVIDUAL UTILITIES BEFORE PROCEEDING WITH CONSTRUCTION.	▩

REVISIONS	DATE	BY
C	REVISED FOR ADDENDUM 1	16/05/03 GFC
B	ISSUED FOR TENDER	16/04/26 GFC
A	ISSUED FOR CLIENT REVIEW	16/04/19 GFC

DESIGNED BY	GFC	CHECKED BY	WJR
DRAWN BY	KMB	APPROVED BY	BWB
DATE	16/04/19	RELEASED FOR CONSTRUCTION	

**MORRISON HERSHFIELD**

DESIGNED BY: GFC  
CHECKED BY: WJR  
DRAWN BY: KMB  
APPROVED BY: BWB

DATE: 16/04/19

**G.F. COOLIDGE**  
Member 24465  
PROFESSIONAL ENGINEER

**THE CITY OF WINNIPEG**  
PUBLIC WORKS DEPARTMENT  
ENGINEERING DIVISION

**2016 LOCAL STREETS PACKAGE**  
**SONY PLACE**  
**HAMELIN ST TO IRENE ST**  
**CONCRETE RECONSTRUCTION**  
**HORIZONTAL AND VERTICAL ALIGNMENT**  
STA 0+350 TO IRENE ST

CITY DRAWING NUMBER: N/A  
SHEET 8 OF 14  
DRAWING No. 8 REV C

K:\Projects\1600154\_Design\1600154\_Sheets\16-R-0201\160015-Sony-PP-03.dwg, Last Saved: 4/29/2016 10:20 AM, by: lbrand, Plotted: 5/2/2016 2:31 PM, by: Dave Lane

BID OPPORTUNITY No. 181-2016