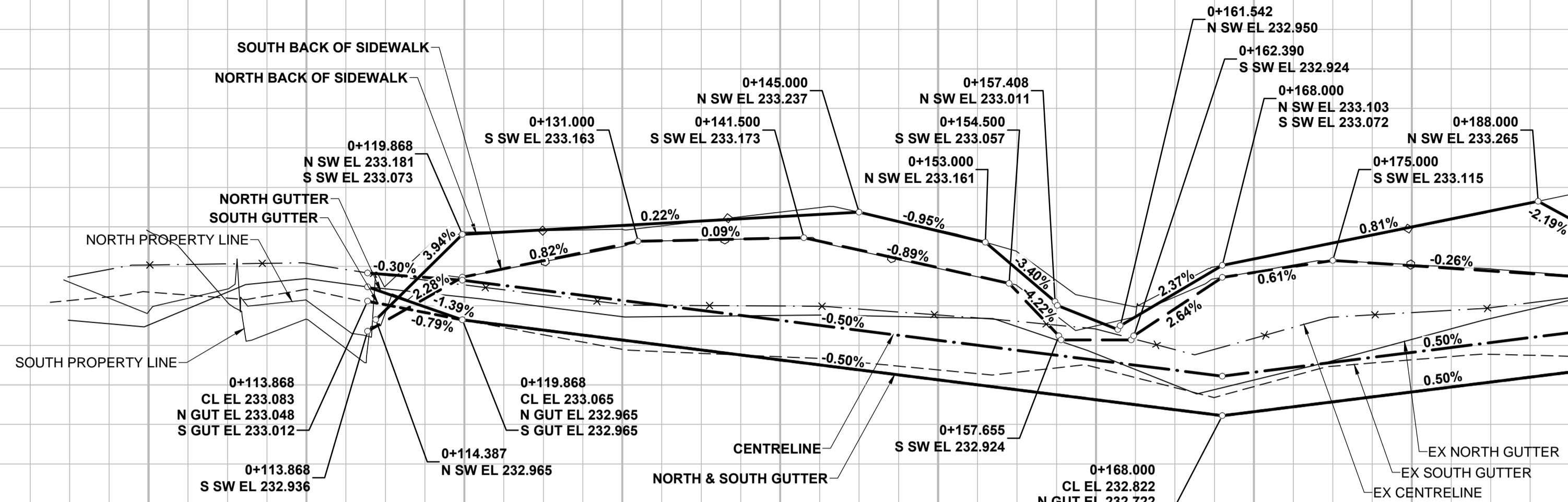


234.00  
233.60  
233.20  
232.80  
232.40  
232.00

234.00  
233.60  
233.20  
232.80  
232.40  
232.00

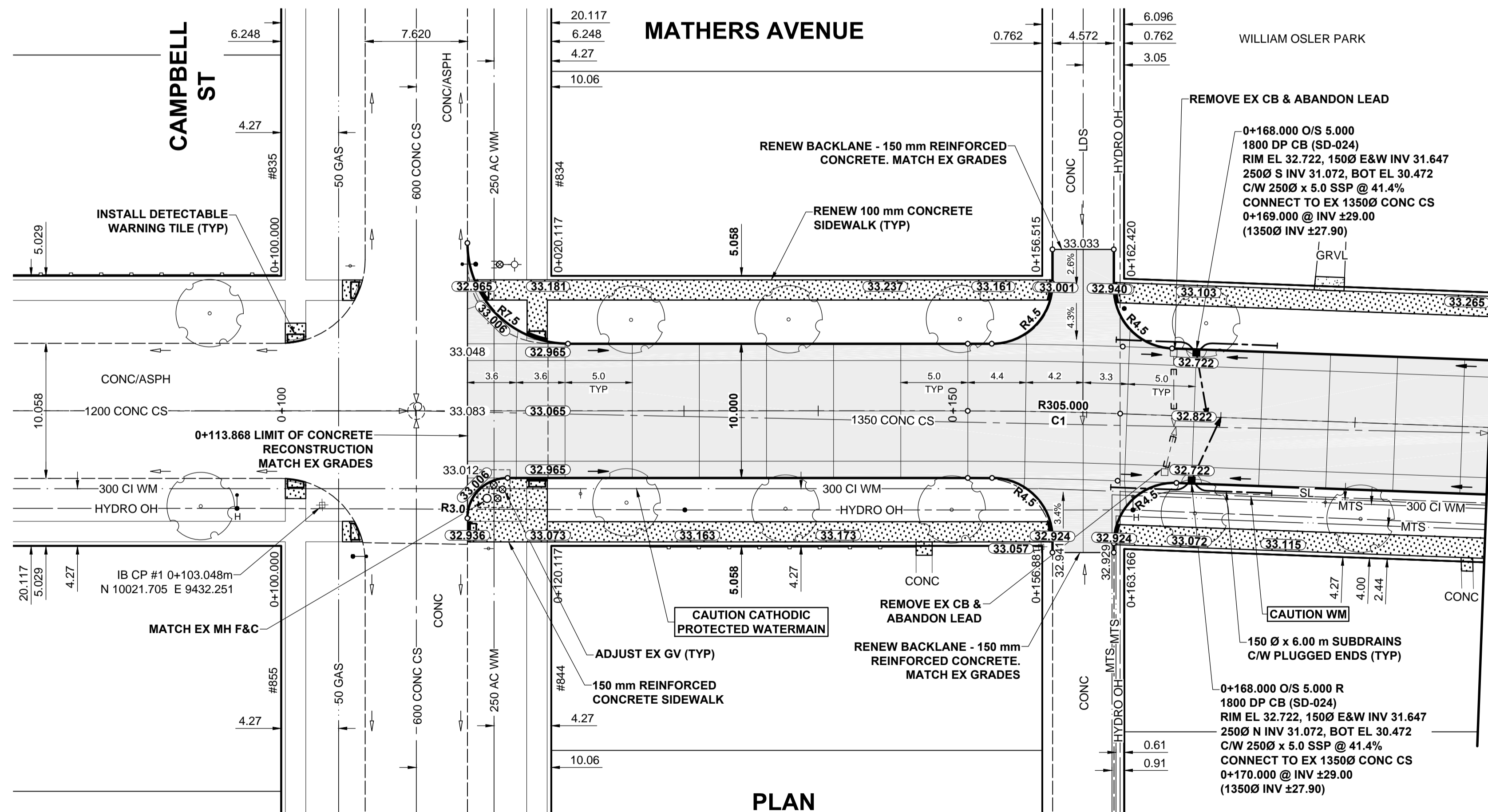


**PAVEMENT PROFILE**

VERTICAL SCALE: 1:10  
0 0.1 0.2 0.3 0.4 0.5m

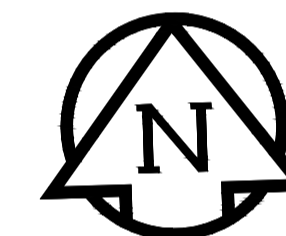
**NOTES**

- ADJUST MH AND CB RIMS TO NEW GRADES.
- LAMP STANDARDS, HYDRO POLES, AND ANCHORS THAT REQUIRE TEMPORARY SUPPORT, REMOVAL OR REPLACEMENT, TO BE DONE SO AT THE EXPENSE OF THE CONTRACTOR AS NECESSARY.
- CONTRACTOR TO REGRADE/RENEW EXISTING PRIVATE SIDEWALKS TO LIMITS AS SHOWN. SIDEWALKS TO BE RENEWED WITH CONCRETE UNLESS NOTED OTHERWISE.
- CONTRACTOR TO TAKE PRECAUTIONARY STEPS TO PROTECT EXISTING TREES WITHIN THE LIMITS OF CONSTRUCTION FROM DAMAGE FROM CONSTRUCTION ACTIVITIES AS OUTLINED IN THE SPECIFICATIONS.
- CONTRACTOR TO CONFIRM THE LOCATION OF ALL UTILITIES/SERVICES IN THE FIELD PRIOR TO CONSTRUCTION.
- CB SD-023 & SD-024 OFFSETS ARE DIMENSIONED TO BOC. CB SD-025 OFFSETS ARE DIMENSIONED O.C.
- IN GENERAL, PAVEMENT AND SIDEWALK AREAS TO BE REMOVED. MATCH RECONSTRUCTION DETAILS.
- REFER TO BID OPPORTUNITY FOR DETAILS REGARDING TRAFFIC MANAGEMENT.
- ALL EXISTING LONG WATER SERVICES TO BE INSULATED (SD-018). REFER TO BID OPPORTUNITY FOR FURTHER REQUIREMENTS.
- ALL COSTS, MATERIALS AND LABOR ASSOCIATED WITH THE RESTORATION OF THE CATHODIC PROTECTED WATERMAIN WILL BE THE RESPONSIBILITY OF THE CONTRACTOR.
- ADD 200.000m TO ABBREVIATED ELEVATIONS TO OBTAIN GEODETIC ELEVATIONS.

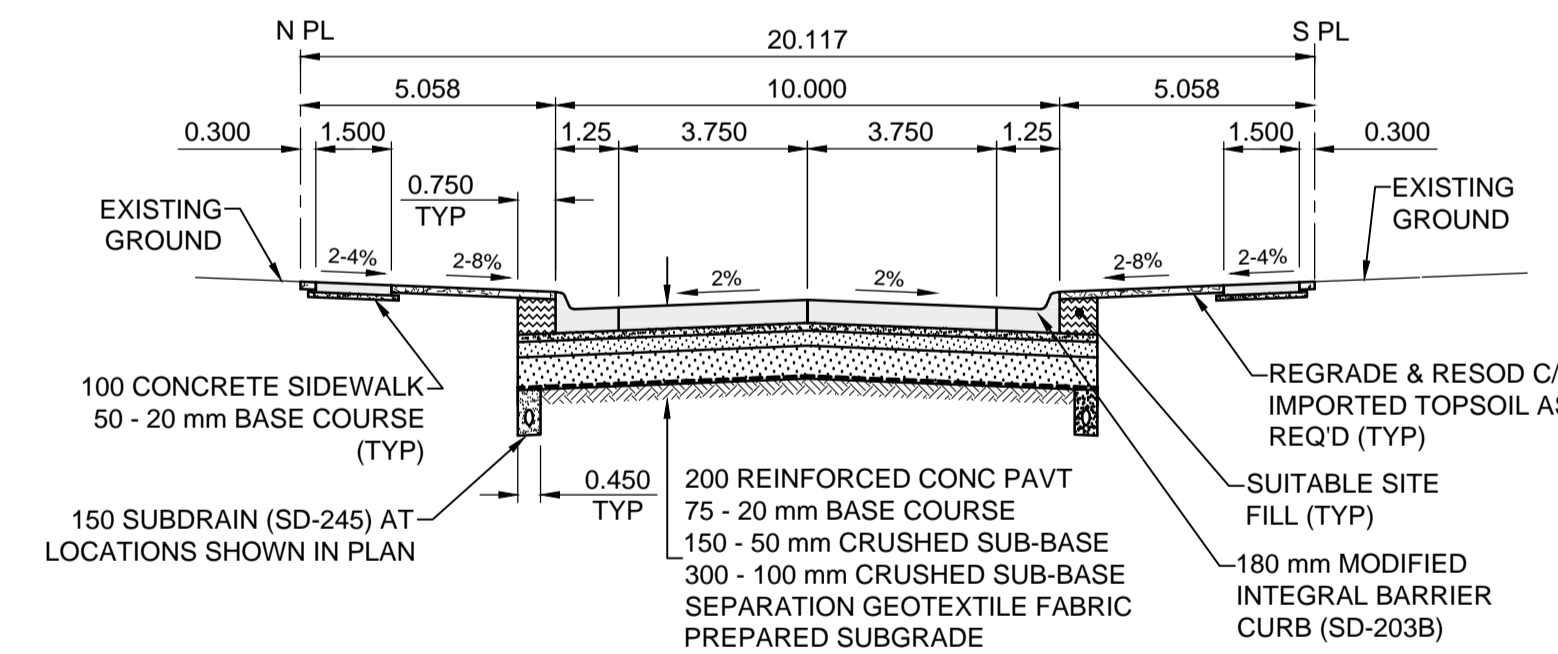


**PLAN**

SCALE: 1:250  
0 5 10 15m



CONTROL LINE - CURVES				
CURVE	RADIUS	LENGTH	DELTA	TANGENT
C1	305.000	11.356	2°08'00"	5.679



**TYPICAL PAVEMENT SECTION**  
CONCRETE PAVEMENT STRUCTURE  
SCALE: NTS

**METRIC**  
WHOLE NUMBERS INDICATE MILLIMETRES  
DECIMALIZED NUMBERS INDICATE METRES

EXISTING	LEGEND - PLAN	NEW	EXISTING	LEGEND - PLAN	NEW	EXISTING	LEGEND - PLAN	NEW	
	GAS		MANHOLE		CONCRETE PAVEMENT		LOCATION APPROVED		GAS
	MTS HANDWELL/PEDESTAL		CATCH BASIN/CATCH PIT		CONC SIDEWALK/MEDIAN		UNDERGROUND STRUCTURES		HYDRO HANDWELL/CABINET
	HYDRO HANDWELL/CABINET		CURB INLET WITH BOX		ASPHALT PAVEMENT		SUPR. LIG. STRUCTURES		CATV/FIBRE OPTIC
	TRAFFIC SIGNALS/PIT		TREE		PAVING STONE		DATE		LAND DRAINAGE SEWER
	LAND DRAINAGE SEWER		TEST HOLE		GRAVEL		NOTE:		SANITARY/COMBINED SEWER
	SANITARY/COMBINED SEWER		PROPERTY LINE		RAMP CURB		INFORMATION AVAILABLE BUT NO GUARANTEE IS GIVEN THAT ALL EXISTING UTILITIES ARE SHOWN OR THAT THE GIVEN LOCATIONS ARE EXACT. CONFIRMATION OF EXISTENCE AND EXACT LOCATION OF ALL SERVICES MUST BE OBTAINED FROM THE INDIVIDUAL UTILITIES BEFORE PROCEEDING WITH CONSTRUCTION.		CB LEAD/SSP/DCP
	CB LEAD/SSP/DCP		SURVEY BAR		PLANING/REMOVAL		EXISTING		WATERMAIN
	WATERMAIN		BOC/EDGE OF PAVEMENT		NEW		ELEVATION		SUBDRAIN
	SUBDRAIN		ELEVATION		DITCH		TRAFFIC SIGN		DITCH
	DITCH		TRAFFIC SIGN						

**LOCATION APPROVED**  
UNDERGROUND STRUCTURES

SUPR. LIG. STRUCTURES COMMITTEE DATE

**NOTE:**  
LOCATION OF UNDERGROUND STRUCTURES AS SHOWN ARE BASED ON THE BEST INFORMATION AVAILABLE BUT NO GUARANTEE IS GIVEN THAT ALL EXISTING UTILITIES ARE SHOWN OR THAT THE GIVEN LOCATIONS ARE EXACT. CONFIRMATION OF EXISTENCE AND EXACT LOCATION OF ALL SERVICES MUST BE OBTAINED FROM THE INDIVIDUAL UTILITIES BEFORE PROCEEDING WITH CONSTRUCTION.

NO.	REVISIONS	DATE	BY
C	ISSUED FOR ADDENDUM 1	16/04/26	JGK
B	ISSUED FOR TENDER	16/04/14	JGK
A	ISSUED FOR CLIENT REVIEW	16/03/18	JGK

DESIGNED BY	CHECKED BY	DATE
JGK	WRJ	16/03/09
DRAWN BY	APPROVED BY	DATE
DML	BWB	16/03/09

PROFESSIONAL'S SEAL  
PROVINCE OF MANITOBA  
REGISTERED PROFESSIONAL ENGINEER  
**J.G. KENNEDY**  
Member 22326

CONSULTANT FILE NAME  
W160015-Mathers-PP-01.dwg

**THE CITY OF WINNIPEG**  
PUBLIC WORKS DEPARTMENT  
ENGINEERING DIVISION

**2016 LOCAL STREETS PACKAGE**  
**MATHERS AVENUE**  
**CAMPBELL ST TO ASH ST**  
CONCRETE RECONSTRUCTION  
HORIZONTAL AND VERTICAL ALIGNMENT  
CAMPBELL ST TO STA 0+190

CITY DRAWING NUMBER: N/A  
SHEET 1 OF 17  
DRAWING No. 1 REV C

BID OPPORTUNITY No. 180-2016

**APEN**  
Certificate of Authorization  
MORRISON HERSHFELD  
No. 1736