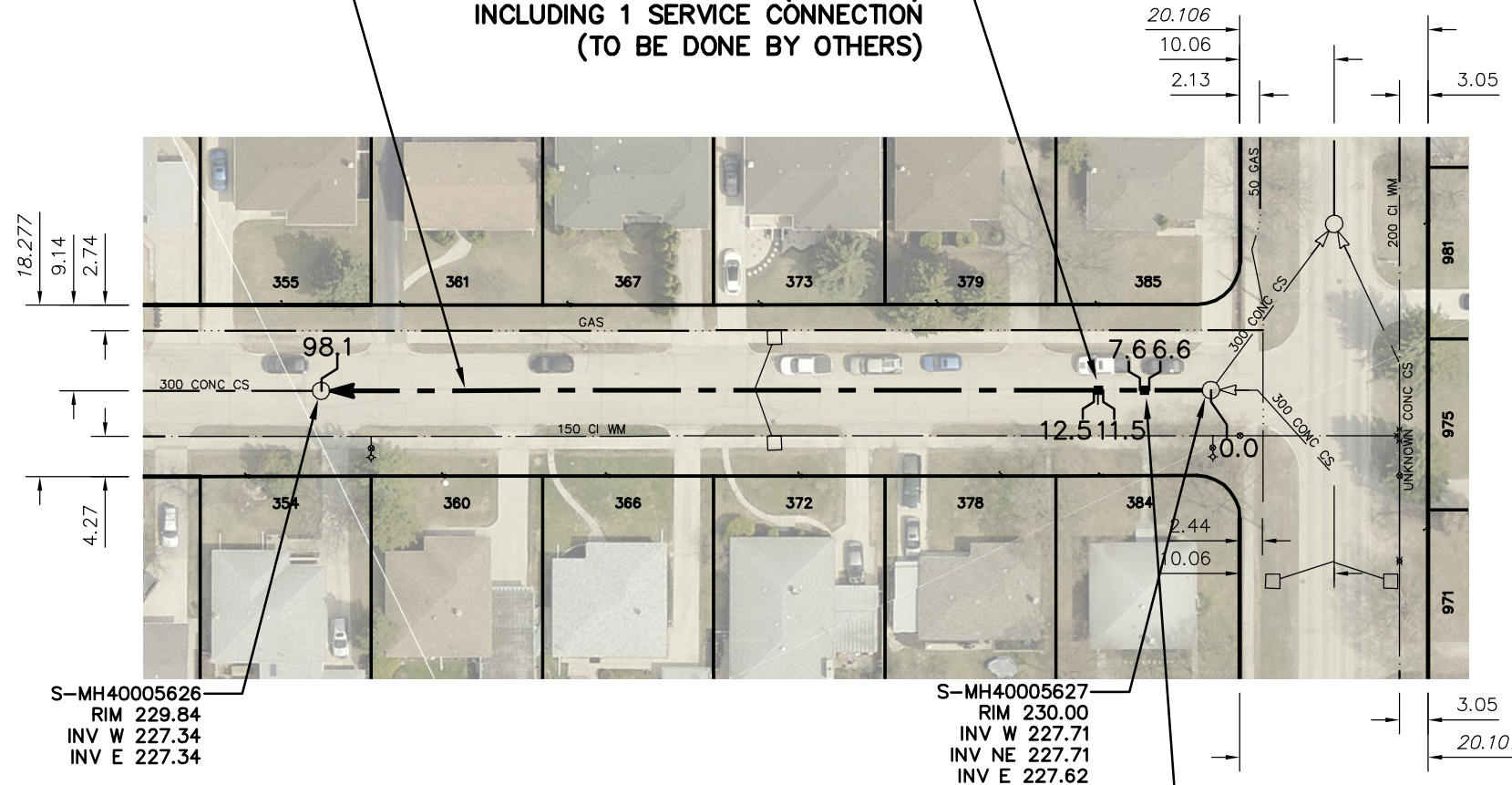


# COLVIN AVENUE

ROCH ST

98.1 OF 300 CONCRETE CS TO BE LINED  
S-MA40006170  
(PARTIALLY DETERIORATED)

1.0m OF 300mm PVC SEWER  
REPAIRS (SD-022A)  
INCLUDING 1 SERVICE CONNECTION  
(TO BE DONE BY OTHERS)



SEWER JUNCTION INFORMATION FROM SEWER VIDEO INSPECTION SEWER ID S-MA40006170		
DISTANCE FROM MH ID S-MH40005627		
DISTANCE	DIAMETER	CLOCK
1.4	150	10
5.4	150	10
12.1	150	10
16.4	150	2
17.1	150	10
23.4	150	10
35.1	150	2
44.6	150	10
48.0	150	2
48.5	150	10
53.0	150	2
65.6	150	10
70.9	150	2
71.8	150	2
84.0	150	10
89.5	150	2
91.1	150	2
91.5	150	10

### WARNING

IF POWER EQUIPMENT OR EXPLOSIVES ARE TO BE USED FOR EXCAVATION ON THIS PROJECT THE CONTRACTOR MUST:

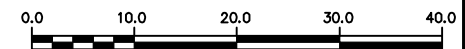
- 1) NOTIFY THE GAS COMPANY OF THE PROPOSED LOCATION OF EXCAVATION.
- 2) TAKE PRECAUTION TO AVOID DAMAGE TO GAS COMPANY INSTALLATIONS.

SEE PROVINCIAL REGULATION 210/72 FOR DETAILS

1.0m OF 300mm PVC SEWER REPAIRS  
(SD-022A)  
(TO BE DONE BY OTHERS)

### METRIC

WHOLE NUMBERS INDICATE MILLIMETRES  
DECIMALIZED NUMBERS INDICATE METRES



LOCATION APPROVED  
UNDERGROUND STRUCTURES

SUPV. U/G STRUCTURES COMMITTEE DATE

NOTE:

LOCATION OF UNDERGROUND STRUCTURES AS SHOWN ARE BASED ON THE BEST INFORMATION AVAILABLE BUT NO GUARANTEE IS GIVEN THAT ALL EXISTING UTILITIES ARE SHOWN OR THAT THE GIVEN LOCATIONS ARE EXACT. CONFIRMATION OF EXISTENCE AND EXACT LOCATION OF ALL SERVICES MUST BE OBTAINED FROM THE INDIVIDUAL UTILITIES BEFORE PROCEEDING WITH CONSTRUCTION.

B.M. ELEV.			
CONSTRUCTION COMPLETION DATE: YYYY MM DD			
NO.	REVISIONS	DATE	BY

DESIGNED BY	NC	CHECKED BY	SC
DRAWN BY	RJ	APPROVED BY	KZ
SCALE:	1:750	RELEASED FOR CONSTRUCTION	KAZ ZUREK
HORIZONTAL		DATE	2016 03 24
VERTICAL		DATE	2016 03 29

ENGINEER'S SEAL

ORIGINAL  
SIGNED BY  
S.R.J.  
COURNOYER  
16-03-22

CONSULTANT DRAWING NUMBER



**THE CITY OF WINNIPEG**  
WATER AND WASTE DEPARTMENT  
ENGINEERING DIVISION

2015 SEWER RENEWALS  
BY AUGMENTATION

COLVIN AVENUE

MH AT ROCH STREET WPL TO  
1ST MH W OF ROCH STREET

SHEET 5 OF 47

CITY DRAWING NUMBER

11217