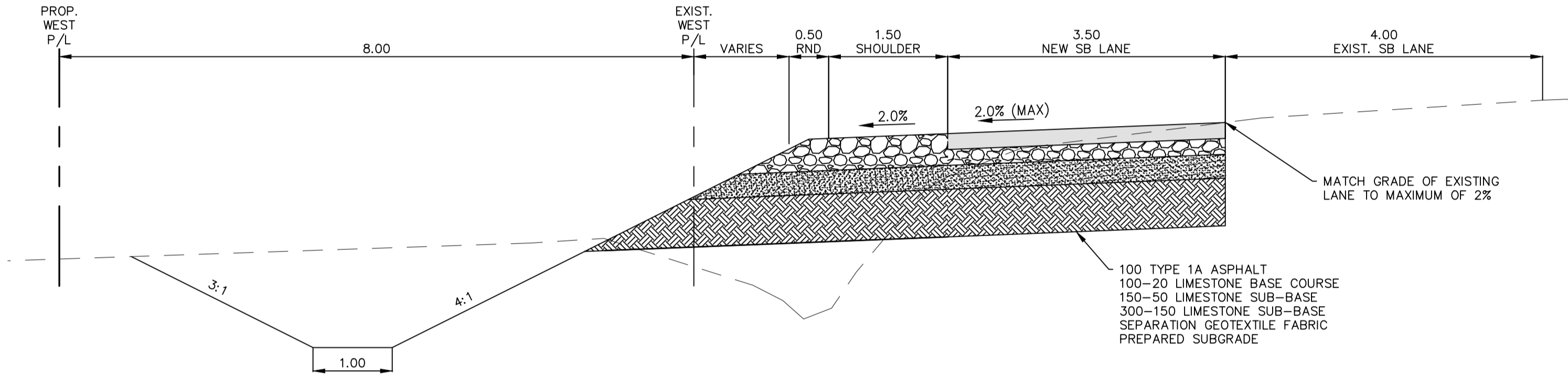
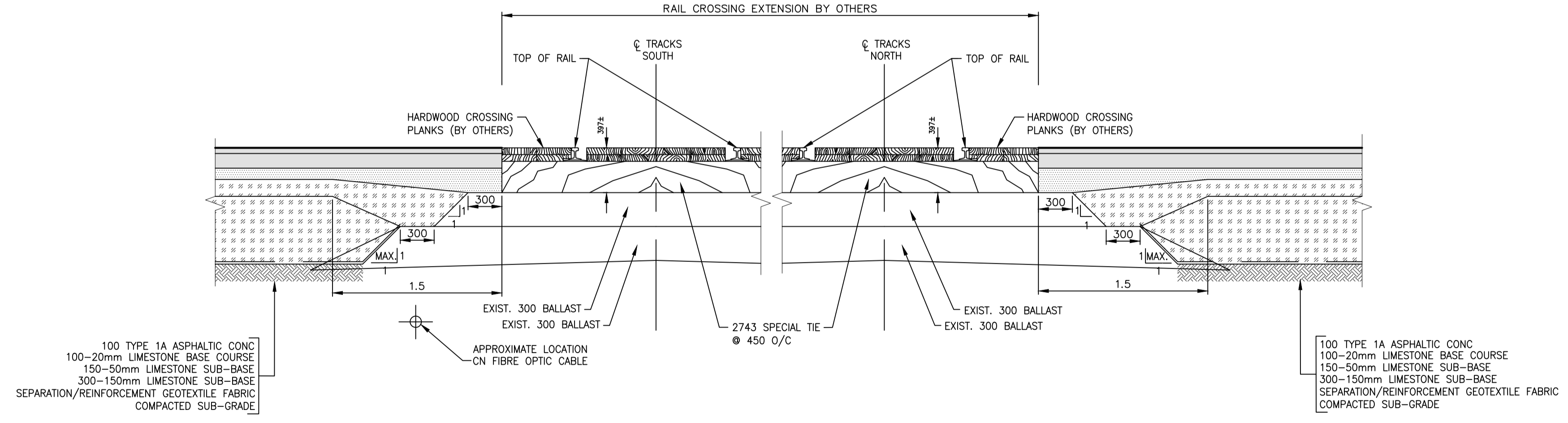


SECTION A - A
NTS



SECTION B - B
NTS



RAIL CROSSING DETAIL
NTS

METRIC
WHOLE NUMBERS INDICATE MILLIMETRES
DECIMALIZED NUMBERS INDICATE METRES



File: 15_0917 - 0444 - Plessis and Gunn Rd Intersection Improvements\MMI Drawings\5515051-C01-C04.dwg - Job: C04

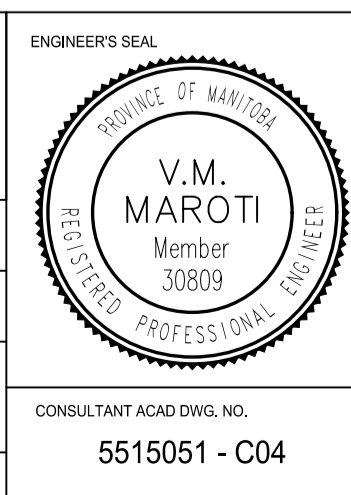
LOCATIONS APPROVED UNDERGROUND STRUCTURES

SIGNED BY: _____ DATE: _____

SUPV U/G STRUCTURES _____

LOCATION OF UNDERGROUND STRUCTURES AS SHOWN ARE BASED ON THE BEST INFORMATION AVAILABLE BUT NO GUARANTEE IS GIVEN THAT ALL EXISTING UTILITIES ARE SHOWN OR THAT THE GIVEN LOCATIONS ARE EXACT CONFIRMATION OF EXISTENCE AND EXACT LOCATION OF ALL SERVICES MUST BE OBTAINED FROM THE INDIVIDUAL UTILITIES BEFORE PROCEEDING

WSP		MMM GROUP	
G.M. 81R849 ELEV. 232.832	N.W. Plessis Rd. & C.P.R. Motion (Keewatin Marine), TR. in 8.2 m Conc. pile, 17 m N. of road (W. of C.P.R. Motion (Keewatin Marine)) and 6.8 m E. of W.L. of Plessis Rd. in W. shoulder of Plessis Rd. and 6.8 m E. of W.L. of Plessis Rd. & 3 m N. of N.L. C.P.R. R.O.W.	DESIGNED BY: GSP	CHECKED BY: TP
4 ISSUED FOR TENDER	15.04.16	JPP	APPROVED BY: VM
3 ISSUED TO U/G STRUCTURES FOR REVIEW	05.02.16	JPP	RELEASED FOR CONSTRUCTION
2 ISSUED FOR REVIEW	23.12.15	JPP	
1 ISSUED FOR PRELIMINARY REVIEW	15.07.15	GSP	
NO. REVISIONS	DATE	BY	DATE
			15-April-16



THE CITY OF WINNIPEG
PUBLIC WORKS DEPARTMENT
ENGINEERING DIVISION

Winnipeg

PLESSIS ROAD AND GUNN ROAD
INTERSECTION IMPROVEMENT
PLESSIS ROAD
TYPICAL SECTIONS AND RAIL CROSSING DETAIL

CITY DRAWING NUMBER
SHEET 4 OF 4
BID NO. 171-2016

NOTE: These design documents are prepared solely for the use by the party with whom the design professional has entered into a contract and there are no representations of any kind made by the design professional to any party with whom the design professional has not entered into a contract.