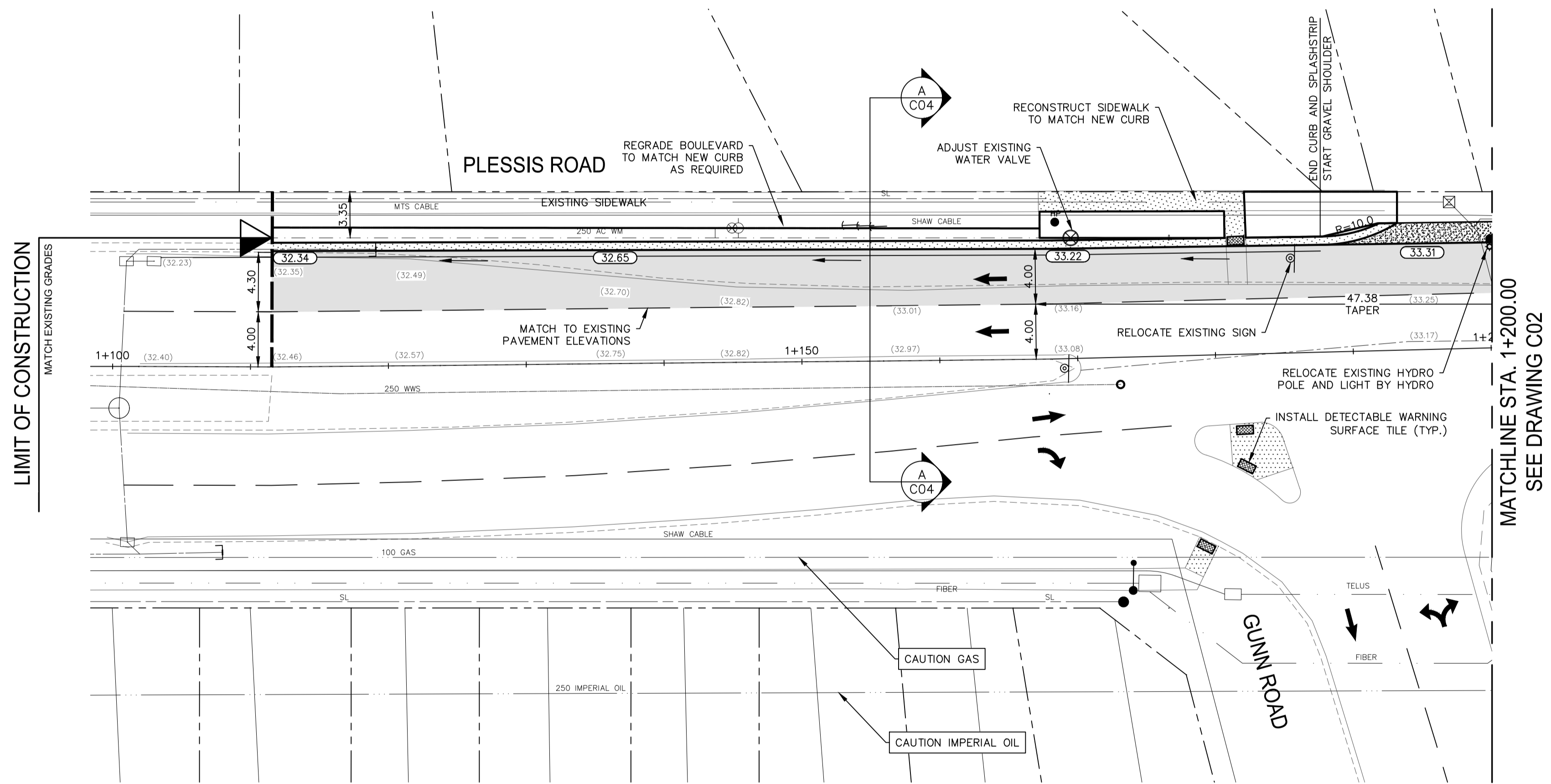


1+100 1+150 1+200



LIMIT OF CONSTRUCTION

MATCHLINE STA. 1+200.00
SEE DRAWING C02

GENERAL NOTES:

- A. ADJUST MH, CB RIMS, AND VALVES TO NEW GRADES.
- B. CONTRACTORS TO TAKE PRECAUTIONARY STEPS TO PROTECT EXISTING TREES WITHIN THE LIMITS OF CONSTRUCTION FROM DAMAGE FROM CONSTRUCTION ACTIVITIES AS OUTLINED IN THE SPECIFICATIONS.
- C. MODIFIED BARRIER CURB TO BE USED AT ALL INTERSECTION RADII, BACK LANE RADII, AND BULL NOSES.
- D. CONTRACTOR TO CONFIRM THE LOCATION OF ALL UTILITIES/SERVICES IN THE FIELD PRIOR TO CONSTRUCTION.
- E. ADD 200.00M TO ABBREVIATED ELEVATIONS TO OBTAIN GEODETIC ELEVATIONS.
- F. CB OFFSETS ARE DIMENSIONED TO BOC.
- G. PAVEMENT REPAIRS SHOWN ARE ONLY A REPRESENTATIVE APPROXIMATION OF THE TENDERED QUANTITIES.
- H. SIDEWALKS TO BE RENEWED WITH CONCRETE AS NOTED BY CONTRACT ADMINISTRATOR.
- I. LAMP STANDARDS, HYDRO POLES, AND ANCHORS THAT REQUIRE TEMPORARY SUPPORT, REMOVAL OR REPLACEMENT, TO BE DONE SO AT THE EXPENSIVE OF THE CONTRACTOR AS NECESSARY.

LOCATIONS APPROVED UNDERGROUND STRUCTURES

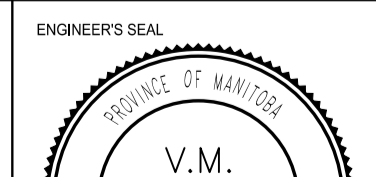
SIGNED BY: _____ DATE: _____
SUPV U/G STRUCTURES _____

LOCATION OF UNDERGROUND STRUCTURES AS SHOWN ARE BASED ON THE BEST INFORMATION AVAILABLE BUT NO GUARANTEE IS GIVEN THAT ALL EXISTING UTILITIES ARE SHOWN OR THAT THE GIVEN LOCATIONS ARE EXACT CONFIRMATION OF EXISTENCE AND EXACT LOCATION OF ALL SERVICES MUST BE OBTAINED FROM THE INDIVIDUAL UTILITIES BEFORE PROCEEDING



G.M. 81R849 ELEV. 232.832	N.W. Plessis Rd. & C.P.R. Molson (Keewatin Marine), TBE in 8.2 m Conc. pile 17 m N. of road Nip. end of C.P.R. Molson (Keewatin Marine) and 6.8 m E. of W.L. of Plessis Rd. in W. shoulder of Plessis Rd. and 6.8 m E. of W.L. of Plessis Rd. & 6.1 m N. of N.L. C.P.R. R.O.W.	DESIGNED BY GSP	CHECKED BY TP
4	ISSUED FOR TENDER	10.02.17	JPP
3	ISSUED TO U/G STRUCTURES FOR REVIEW	05.02.16	JPP
2	ISSUED FOR REVIEW	23.12.15	JPP
1	ISSUED FOR PRELIMINARY REVIEW	15.07.15	GSP
NO.	REVISIONS	DATE	BY
		15-Apr-16	

MMM Group Limited
Suite 111 - 93 Lombard Ave
Winnipeg, MB R3B 3B1
t. 204.943.3178
f. 204.943.4948
www.mmgrouplimited.com



CONSULTANT ACAD DWG. NO.
5515051 - C01



THE CITY OF WINNIPEG
PUBLIC WORKS DEPARTMENT
ENGINEERING DIVISION

PLESSIS ROAD AND GUNN ROAD
INTERSECTION IMPROVEMENT
PLESSIS ROAD
STA. 1+100 - STA. 1+200

METRIC

WHOLE NUMBERS INDICATE MILLIMETRES
DECIMALIZED NUMBERS INDICATE METRES



CITY DRAWING NUMBER

SHEET 1 OF 4

BID NO.
171-2016

P:\15_0917 - 0_3241 - Plessis and Gunn Rd Intersection Improvements\MMM Drawings\5515051-C01_C04.dwg - Iab:C01