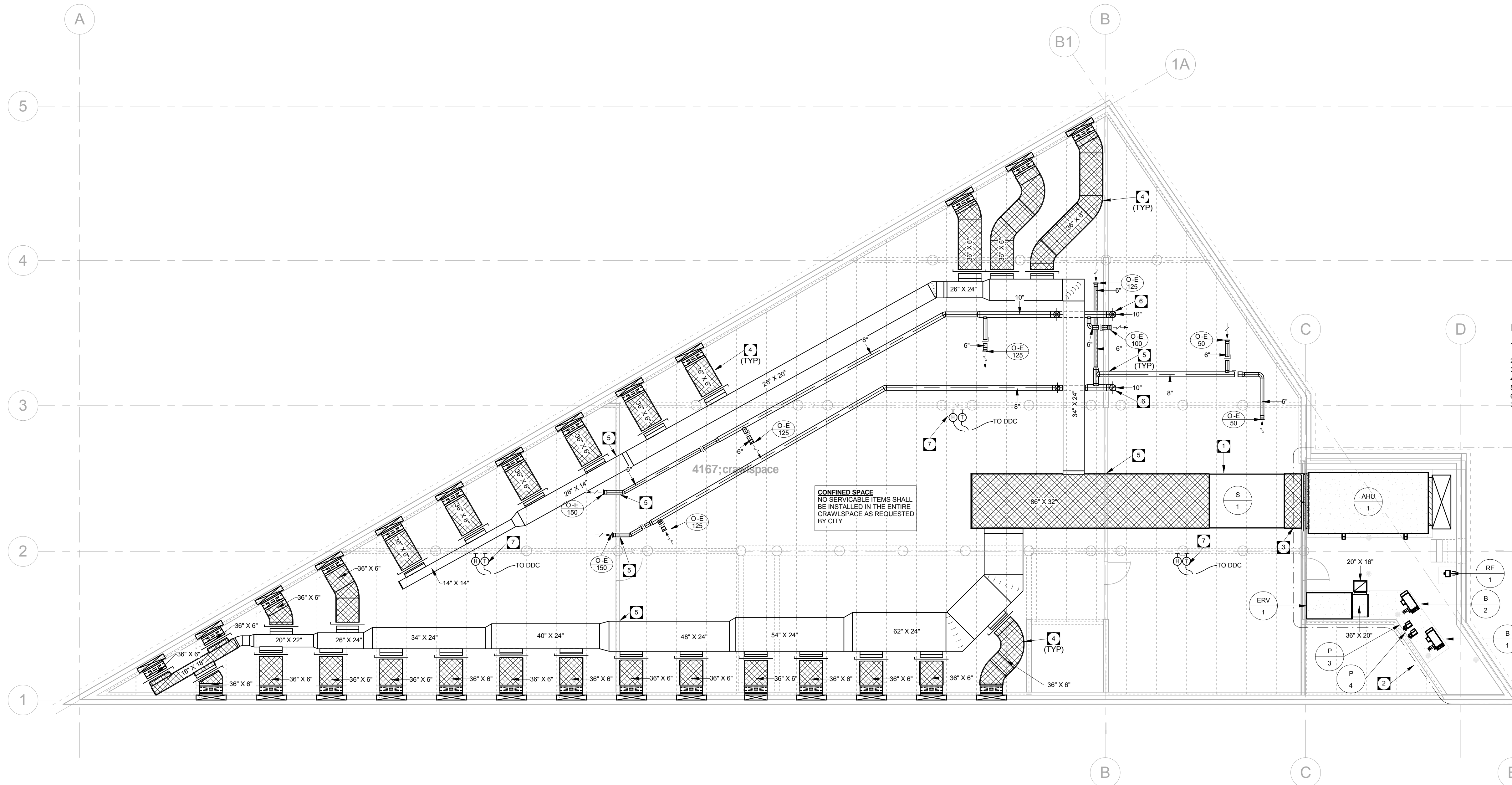


**GENERAL NOTES**

- A. FIRESTOP ALL MECHANICAL PENETRATIONS THROUGH FIRE-RATED FLOOR AND WALL ASSEMBLIES. SEE ARCHITECTURAL DRAWINGS FOR LOCATION AND TYPE OF RATINGS.
- B. DUCT TRANSITIONS MAY NOT BE SHOWN IN DETAIL ON PLAN. REFER TO DETAILS SHEETS AND SMACNA - HVAC DUCT CONSTRUCTION STANDARDS FOR REQUIRED DUCT TRANSITIONS AND FITTINGS. ALL DUCT TAPS TO BRANCH DUCTS SHALL HAVE 45 DEGREE ENTRY FITTINGS.
- C. INSTALL FIRE DAMPERS ON ALL DUCTS PENETRATING FIRE RATED WALL ASSEMBLIES. COMPLETE WITH ACCESS DOORS. SEE STANDARD DETAIL. REFER TO ARCHITECTURAL DRAWING FOR WALL TYPES.
- D. ALL DUCTWORK SHALL BE SEALED AND INSULATED ACCORDING TO THE MECHANICAL SPECIFICATIONS.
- E. COORDINATE FINAL THERMOSTAT INSTALLATION HEIGHT AND DISTANCE FROM DOOR WITH ARCHITECT.
- F. REFER TO SPECIFICATION FOR ADDITIONAL STANDARD INSTALLATION DETAILS.
- G. DUCT INSULATION MATERIALS SHALL MEET SMOKE AND FLAME SPREAD REQUIREMENTS FOR PLENUM INSULATION.
- H. DUCT INSULATION SHALL FOLLOW THE SCHEDULES IN THE SPECIFICATION AS A MINIMUM REQUIREMENT. THESE REQUIREMENTS SHALL APPLY REGARDLESS OF WHETHER OR NOT DUCT INSULATION IS SHOWN ON THE DRAWINGS.
- I. WHERE DUCT INSULATION IS SHOWN ON THE DRAWINGS (EITHER WITH THE HATCHING CONVENTION OR BY MEANS OF A KEY NOTE) AND EXCEEDS THE REQUIREMENTS OF THE SCHEDULES IN THE SPECIFICATION, THE ADDITIONAL INSULATION REQUIREMENTS SHALL BE MET.
- J. INSTALL ALL FLOOR MOUNTED EQUIPMENT ON MINIMUM 100MM (4") THICK CONCRETE HOUSE KEEPING PADS.
- K. PROVIDE MANUAL BALANCE DAMPERS FOR EACH EXHAUST, SUPPLY, AND RETURN GRILLE WHERE AN AIR VOLUME HAS BEEN PROVIDED.
- L. INSTALL BALANCE DAMPERS AS FAR AWAY FROM GRILLES OR DIFFUSERS SERVED AS PRACTICALLY POSSIBLE.
- M. INSTALL ALL BALANCE DAMPERS IN AN EASILY ACCESSIBLE LOCATION.
- N. REFER TO ARCHITECTURAL REFLECTED CEILING PLANS FOR EXACT LOCATIONS OF GRILLES AND DIFFUSERS.
- O. REFER TO CONTROLS SCHEMATICS FOR REQUIREMENTS FOR SENSORS, ACTUATORS AND OTHER CONTROLS COMPONENTS.

**KEY NOTES**

- 1. PROVIDE SILENCER WITHIN 16 INCHES OF AIR HANDLER DISCHARGE. PROVIDE 2 INCH ACOUSTIC LINING BEFORE AND AFTER SILENCER AS SHOWN.
- 2. REFER TO LARGE SCALE MECHANICAL PLANS.
- 3. ACCESS DOOR TO SERVICE FIRE DAMPER.
- 4. ACOUSTIC INSULATION REQUIRED AFTER BALANCE DAMPER.
- 5. SEAL DUCTS ON BOTH SIDES PASSING THROUGH WALL.
- 6. CRAWLSPACE EXHAUST AND SUPPLY RISE LOCATION.
- 7. PROVIDE TEMPERATURE AND HUMIDITY SENSOR WITHIN EACH COMPARTMENT. MOUNT SENSORS ON GRADE BEAMS. TIE UNITS BACK TO THE DDC.



1 CRAWLSPACE PLAN - HVAC  
 MH2.1 SCALE: 1/8" = 1'-0"



**epp siepman engineering inc.**  
 mechanical & electrical engineers  
 303-100 Osborne St. South  
 Winnipeg, MB R3L 1Y5  
 p 204.453.1080  
 ese@eppsiepman.com

O 16-03-31 Issued for Construction  
 revision

THIS DRAWING IS THE EXCLUSIVE PROPERTY OF H5 ARCHITECTURE AND DAVID PENNER ARCHITECT AND MAY NOT BE REPRODUCED AND/OR USED IN ANY MANNER WITHOUT THEIR EXPRESSED WRITTEN PERMISSION. THE GENERAL CONTRACTOR AND MATERIALS SUPPLIERS SHALL CHECK ALL DIMENSIONS AND INFORMATION ON THIS DRAWING AND REPORT ANY DISCREPANCIES PRIOR TO COMMENCEMENT OF WORK. DO NOT SCALE THIS DRAWING.

**OWNER**  
  
 CITY OF WINNIPEG - PLANNING, PROPERTY & DEVELOPMENT DEPARTMENT  
 MUNICIPAL ACCOMMODATIONS DIVISION  
 3rd FLOOR - 65 GARRY ST., WPG, R3C 4K4

**david penner**  
 ARCHITECT  
 +  
**h5a**  
 h5 architecture

David Penner, 204.475.8978  
 Hello Rodriguez, 204.774.0012  
 120 Yale Avenue, Winnipeg, MB, R3M 0L7

**PROJECT**  
 Windsor Park Library  
**ADDRESS**  
 1201 Archibald Street

**DATE**  
 February 28, 2016  
**SCALE**  
 As indicated

crawlspace - hvac  
**MH2.1**