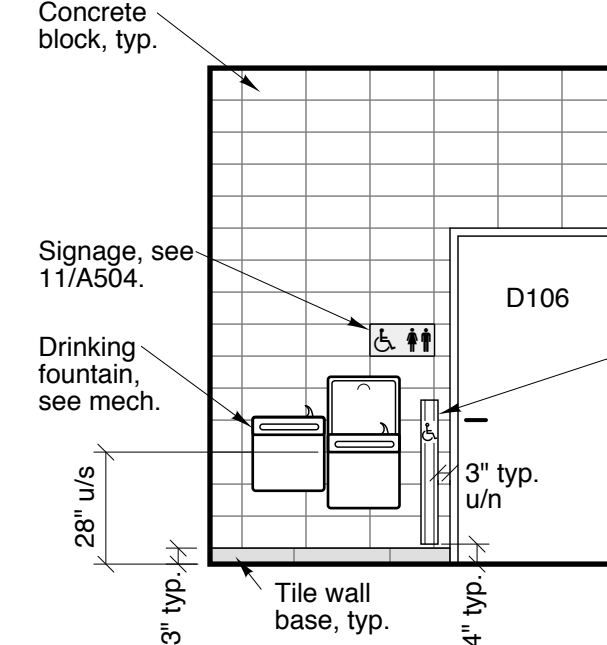
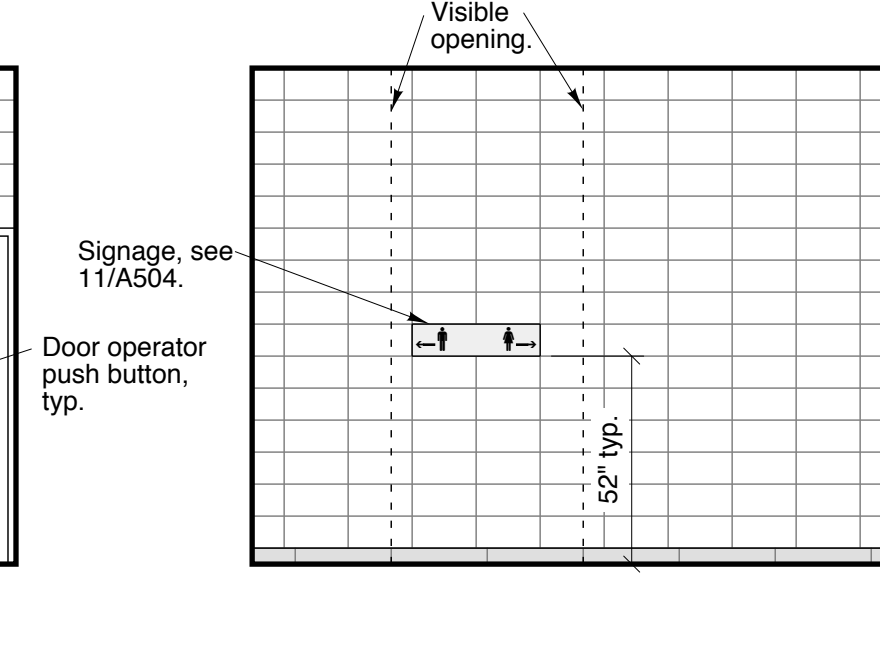


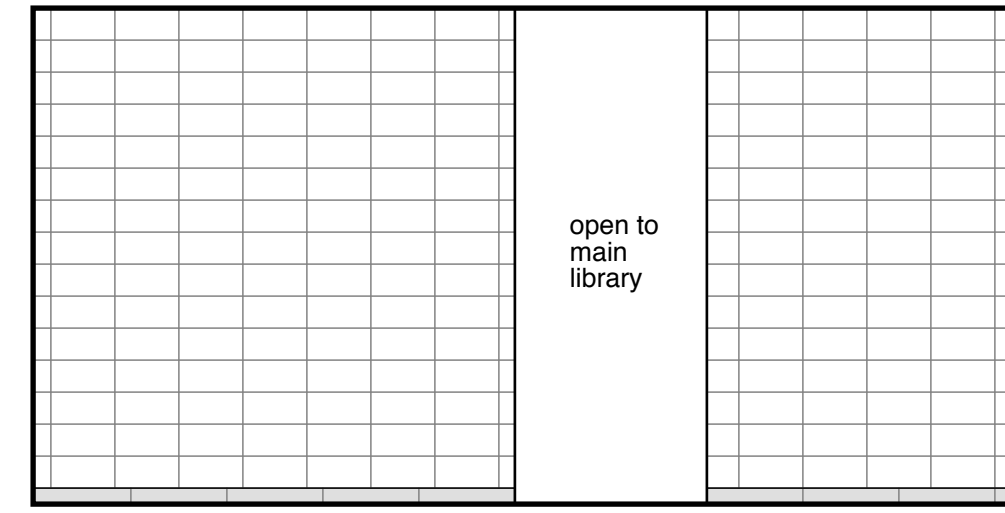
Note: Top edge of tile wall base shall be flush w/ top edge of conc. block. Align grout lines with floor tile, typ.



1
a401
corridor
1/4"=1'-0"

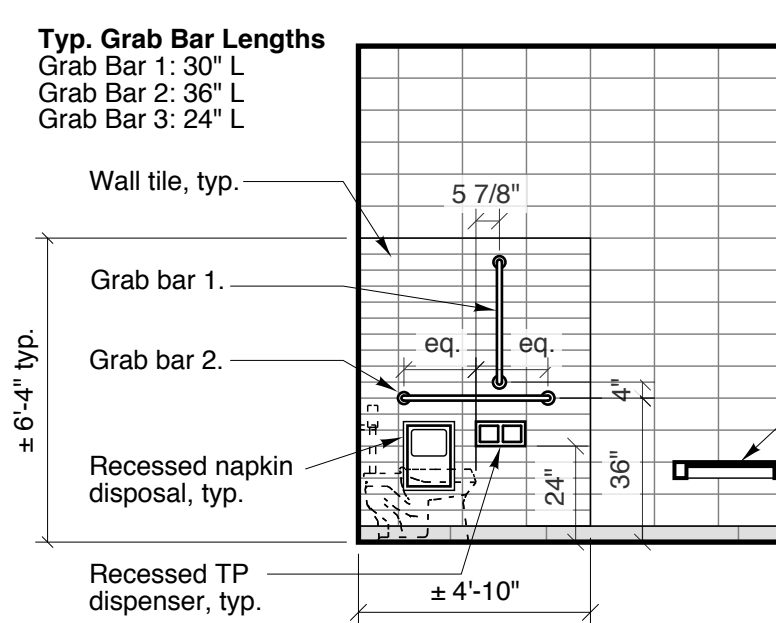


2
a401

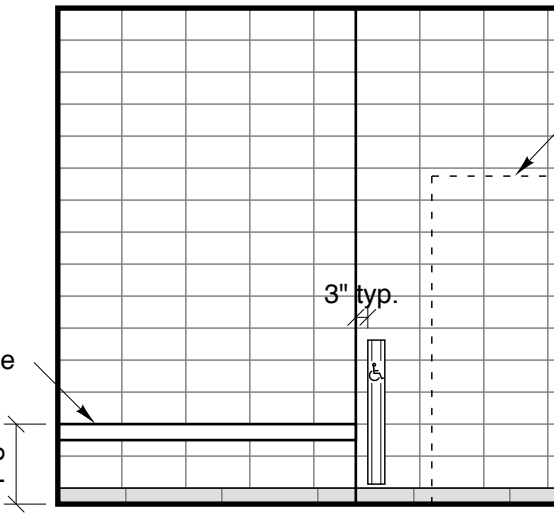


3
a401

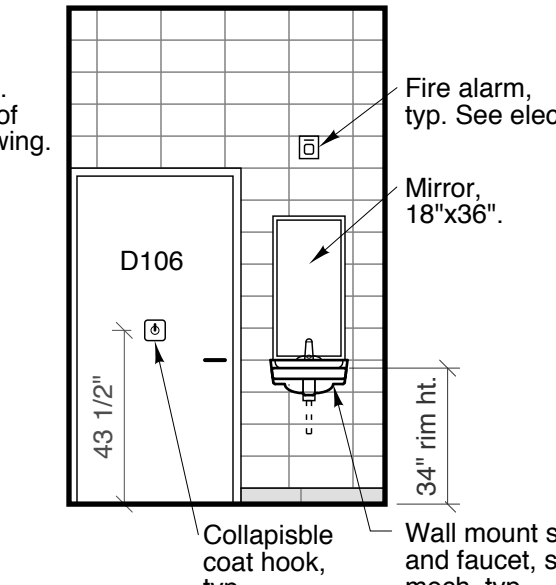
Note: Align wall tiles with edge of conc. block. Dims. are 3/8" as req'd to mount all grab bars and WC accessories. Ensure wall tile is flush with floor tile wall base. Typical all washrooms.



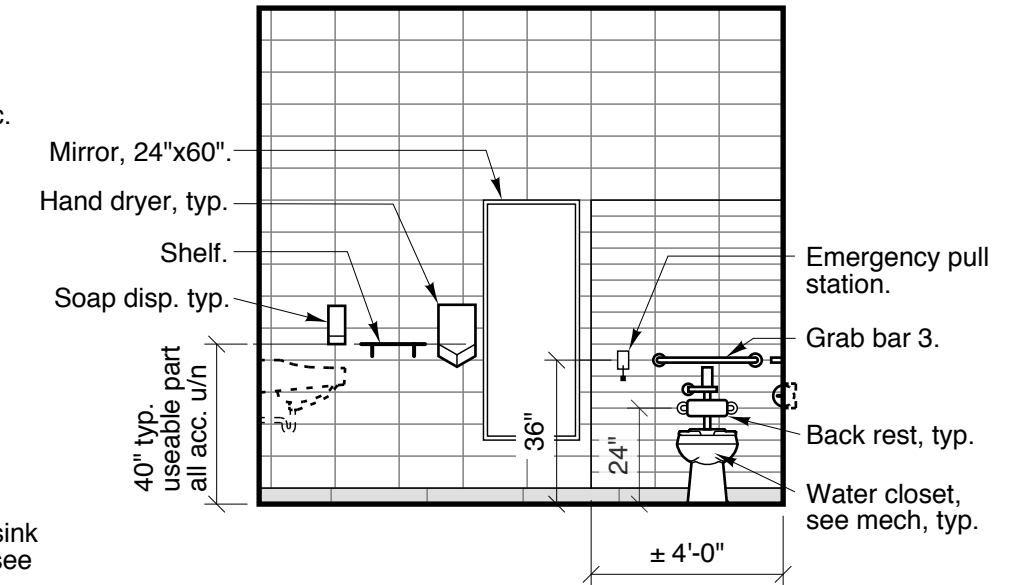
4
a401
universal wc
1/4"=1'-0"



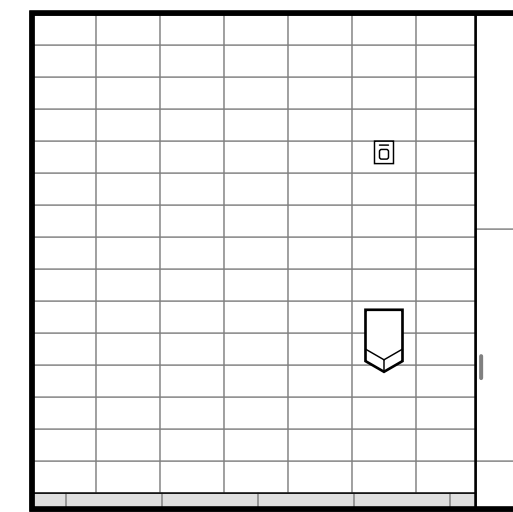
5
a401



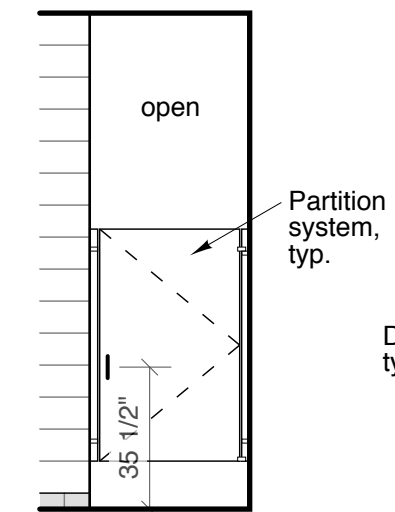
6
a401



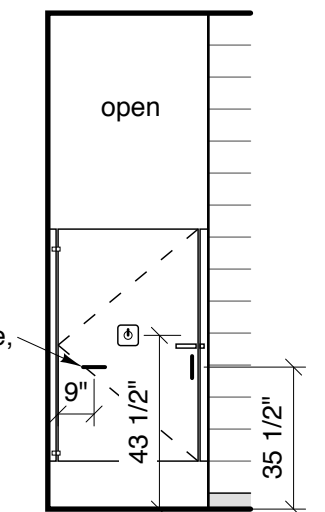
7
a401



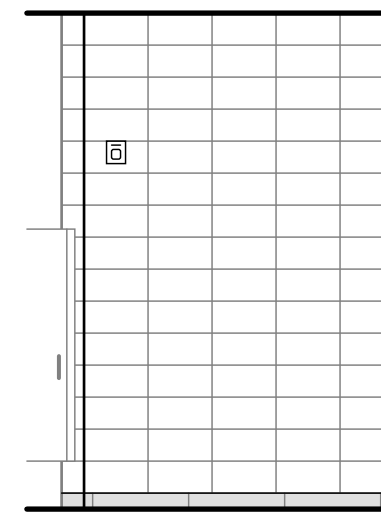
8a
a401
men's wc
1/4"=1'-0"



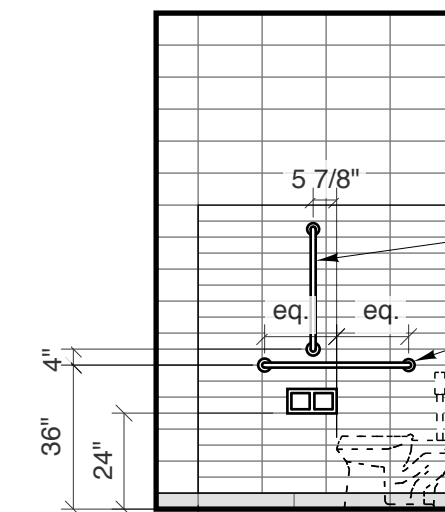
8b
a401



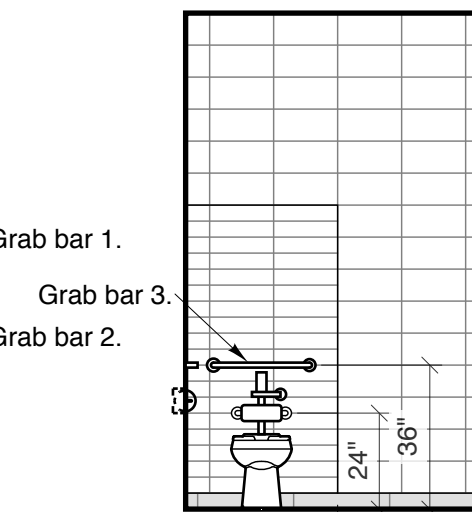
9a
a401



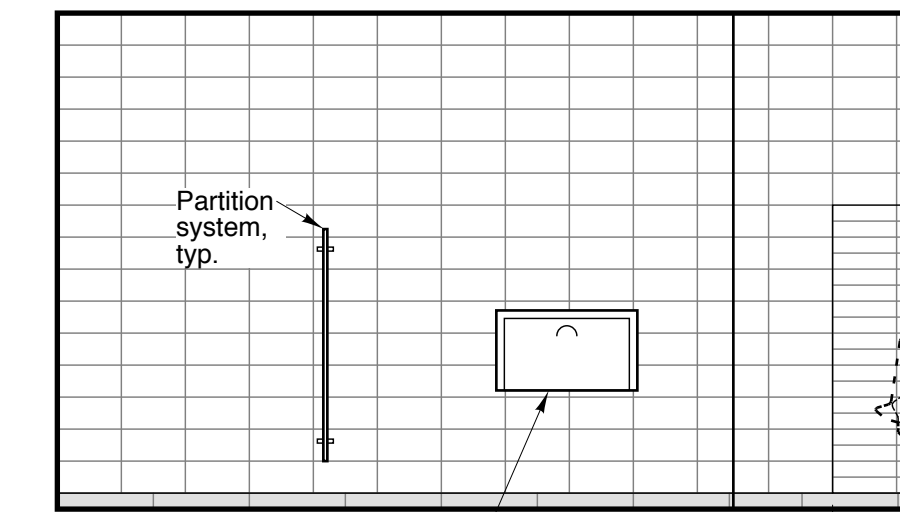
9b
a401



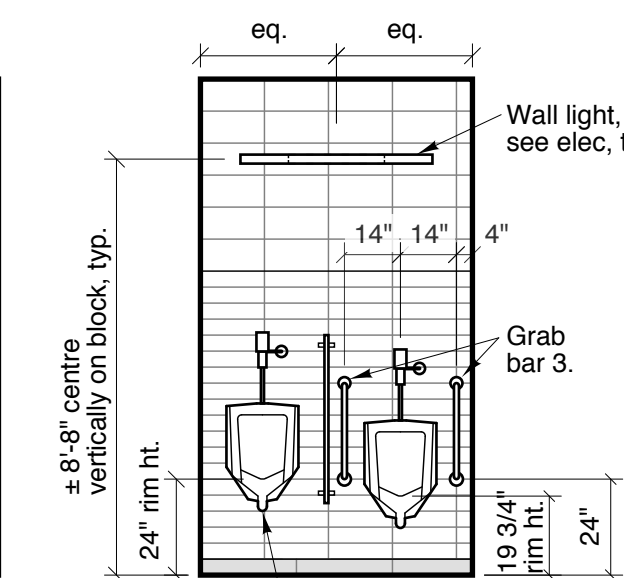
10
a401



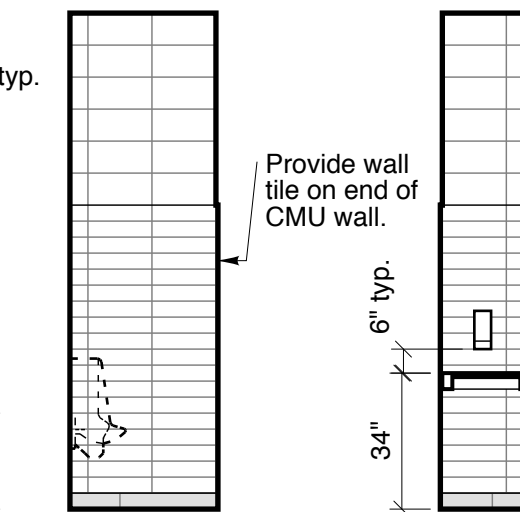
11
a401



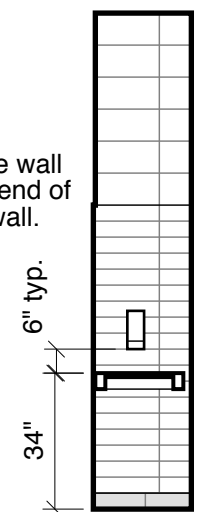
12
a401



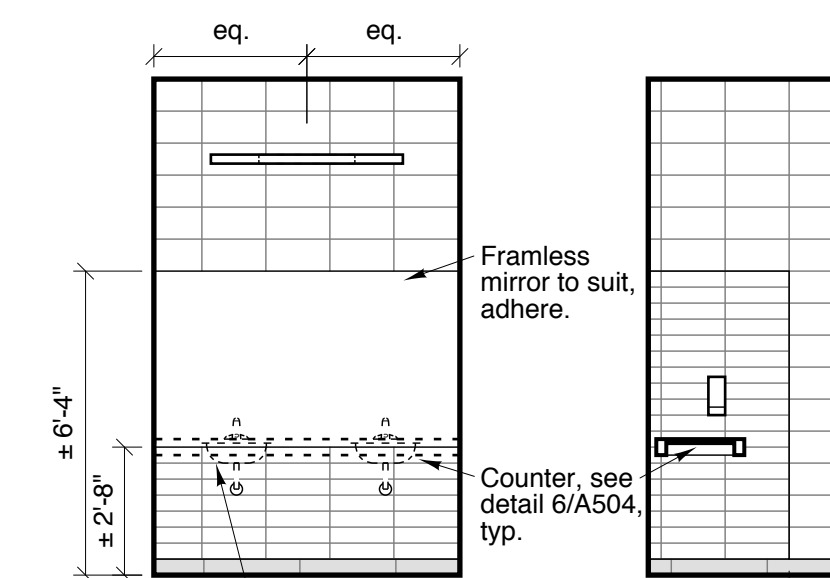
13
a401



14
a401



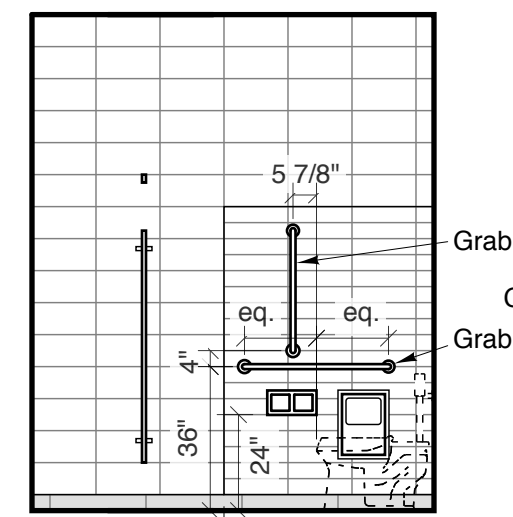
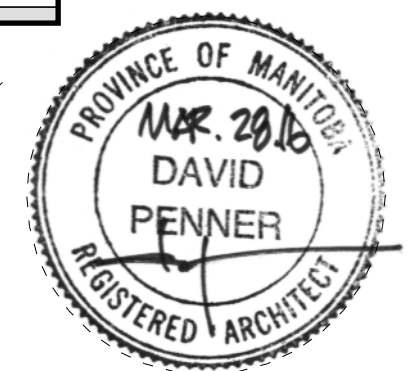
15
a401



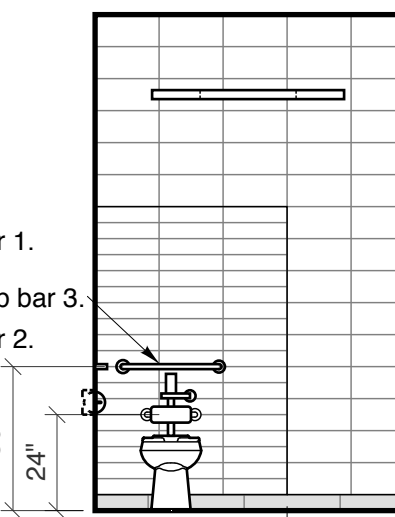
16
a401

Note: No exposed caulking lines at mirror or vanity, typ.

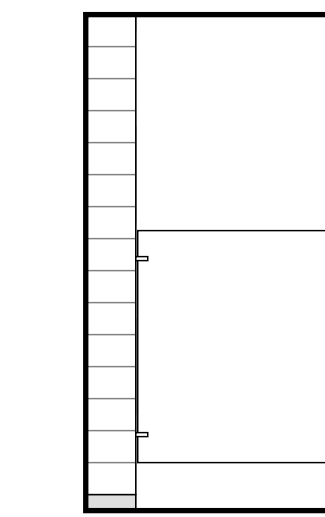
17
a401



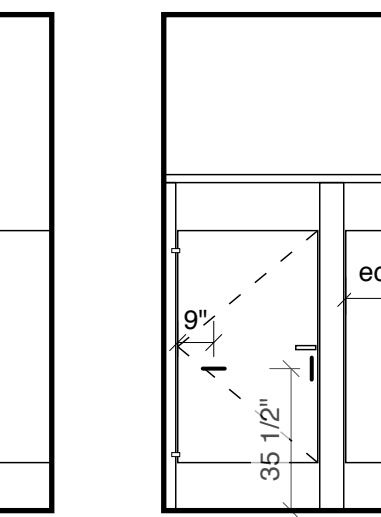
18
a401
women's wc
1/4"=1'-0"



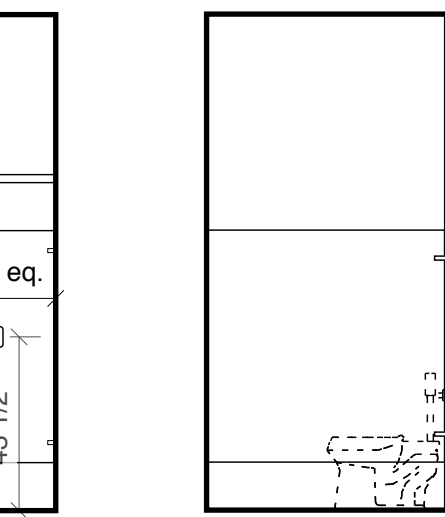
19
a401



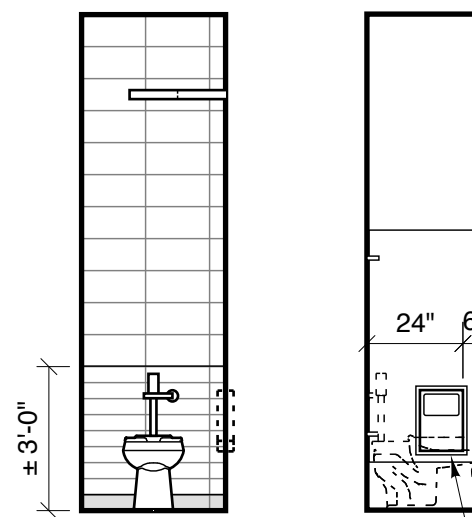
20
a401



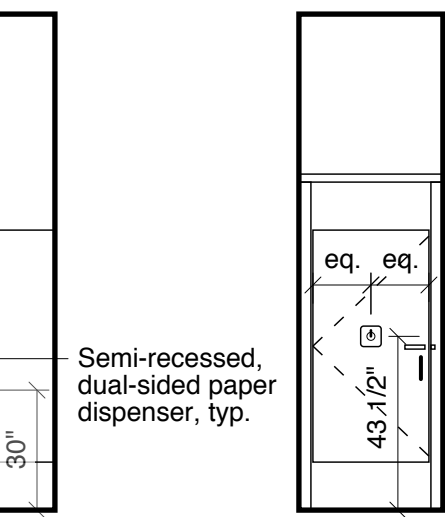
21
a401



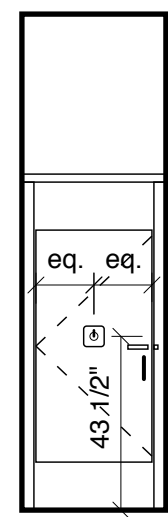
22
a401



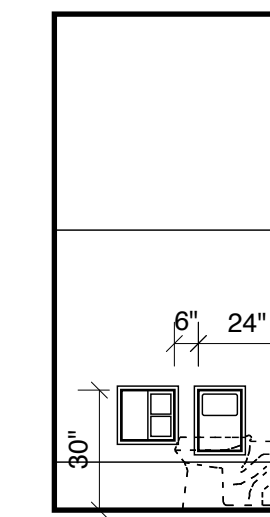
23
a401



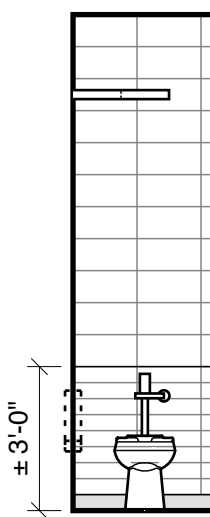
24
a401



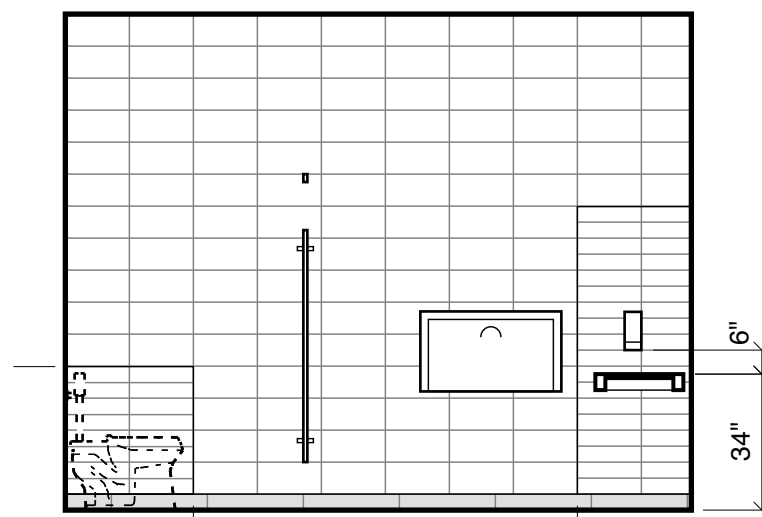
25
a401



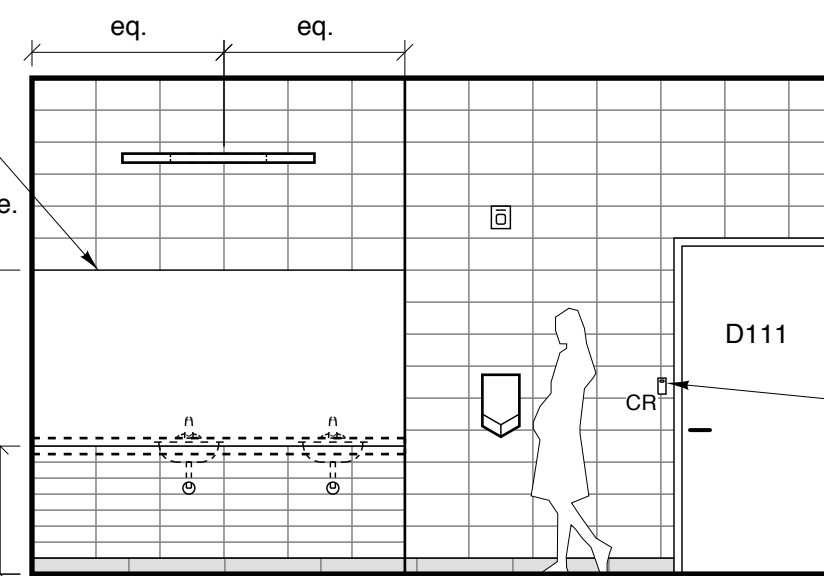
26
a401



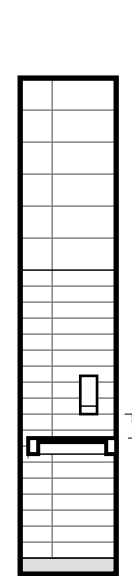
27
a401



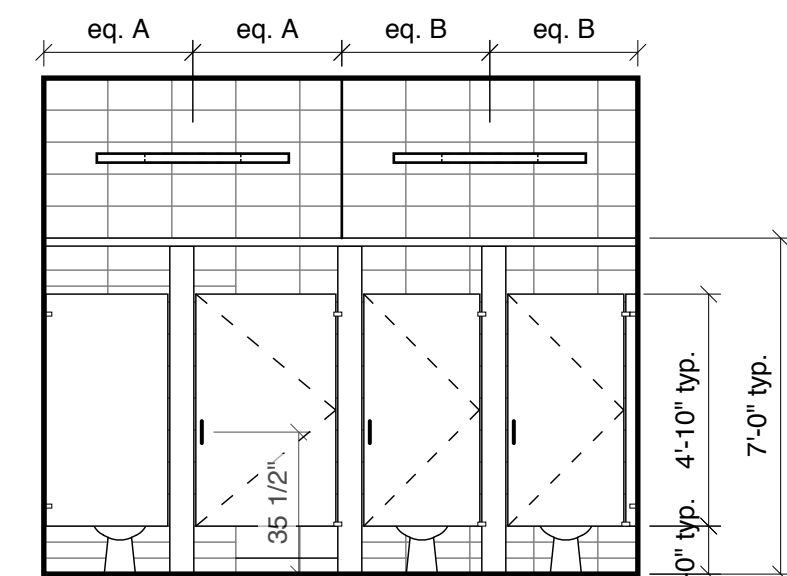
28
a401



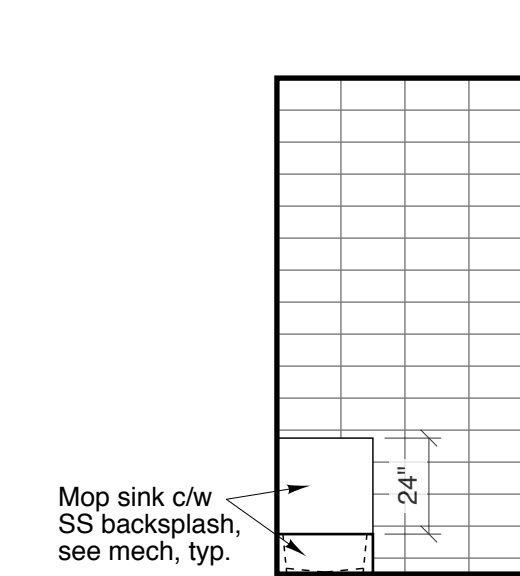
29a
a401



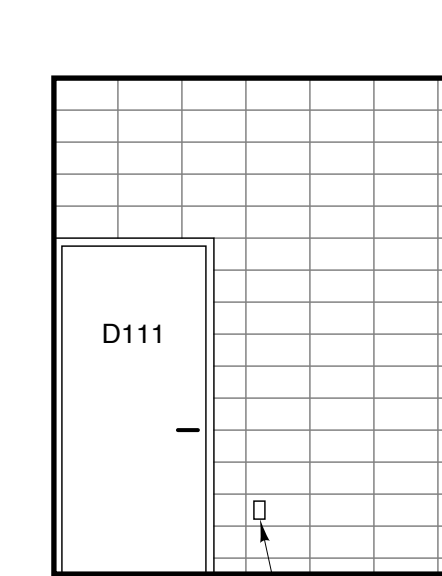
29b
a401



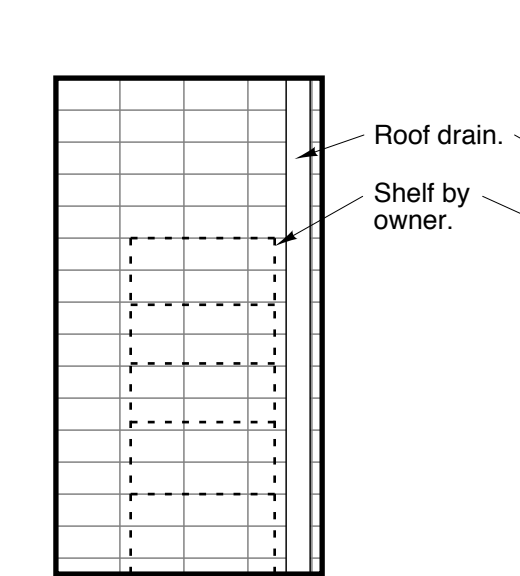
30
a401



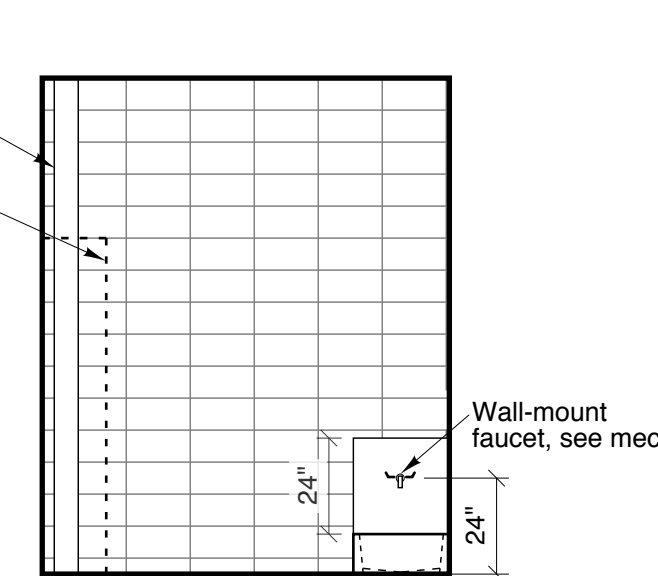
31
a401
janitor's rm.
1/4"=1'-0"



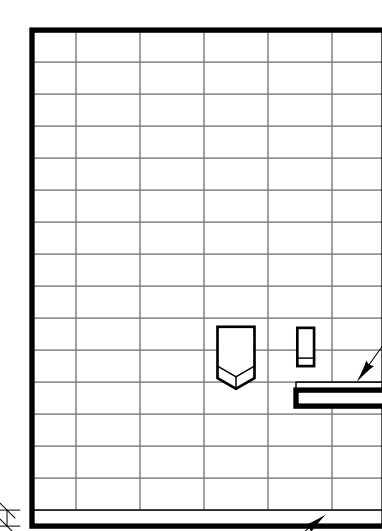
32
a401



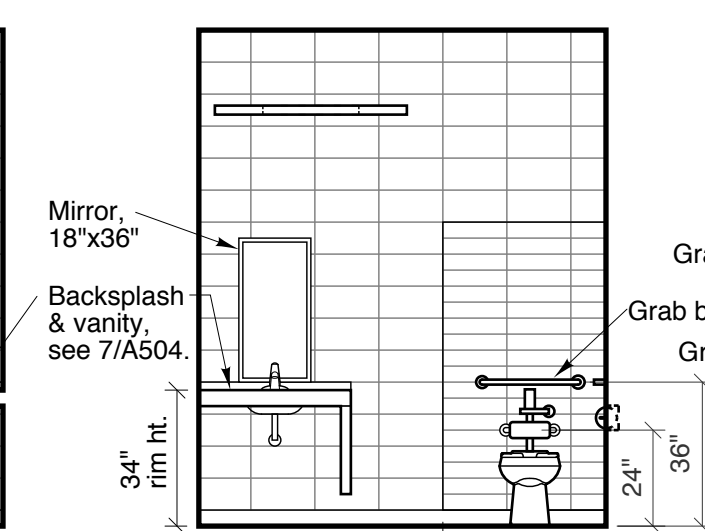
33
a401



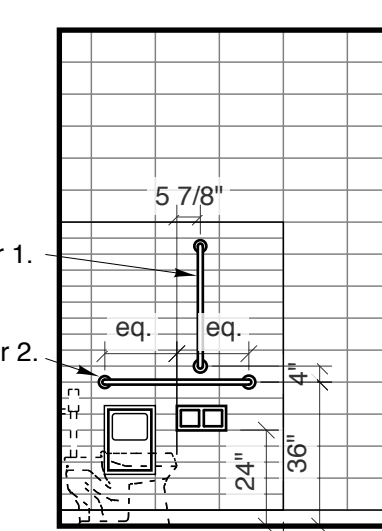
34
a401



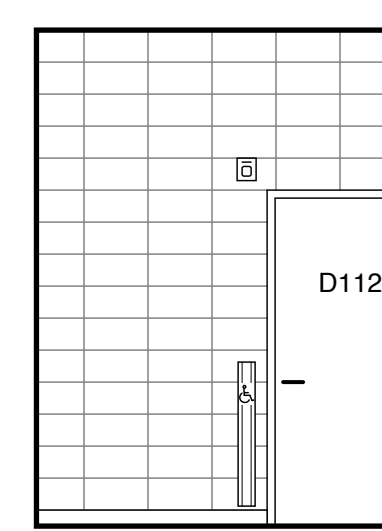
35
a401
staff wc
1/4"=1'-0"



36
a401



37
a401



38
a401

Issued for Construction: March 28, 2016

NOTES:
THIS DRAWING IS THE EXCLUSIVE PROPERTY OF HIS ARCHITECTURE AND DAVID PENNER ARCHITECT AND MAY NOT BE REPRODUCED AND/OR USED IN ANY MANNER WITHOUT THEIR EXPRESSED WRITTEN PERMISSION. THE GENERAL CONTRACTOR AND MATERIALS SUPPLIER'S SHALL CHECK ALL DIMENSIONS AND INFORMATION ON THIS DRAWING AND REPORT ANY DISCREPANCIES PRIOR TO COMMENCEMENT OF WORK. DO NOT SCALE THIS DRAWING.

OWNER
Winnipeg

CITY OF WINNIPEG - PLANNING, PROPERTY & DEVELOPMENT DEPARTMENT
MUNICIPAL ACCOMMODATIONS DIVISION
3rd FLOOR - 65 GARRY ST., WPG, R3C 4K4

david penner
A R C H I T E C T
+
h5a
h5 architecture

David Penner, 204.475.8978
Helio Rodrigues, 204.774.0012
120 Yale Avenue, Winnipeg, MB, R3M 0L7

PROJECT
Windsor Park Library
ADDRESS
1201 Archibald Street

DATE
March 28, 2016

SCALE
as noted

interior elevations
a.401