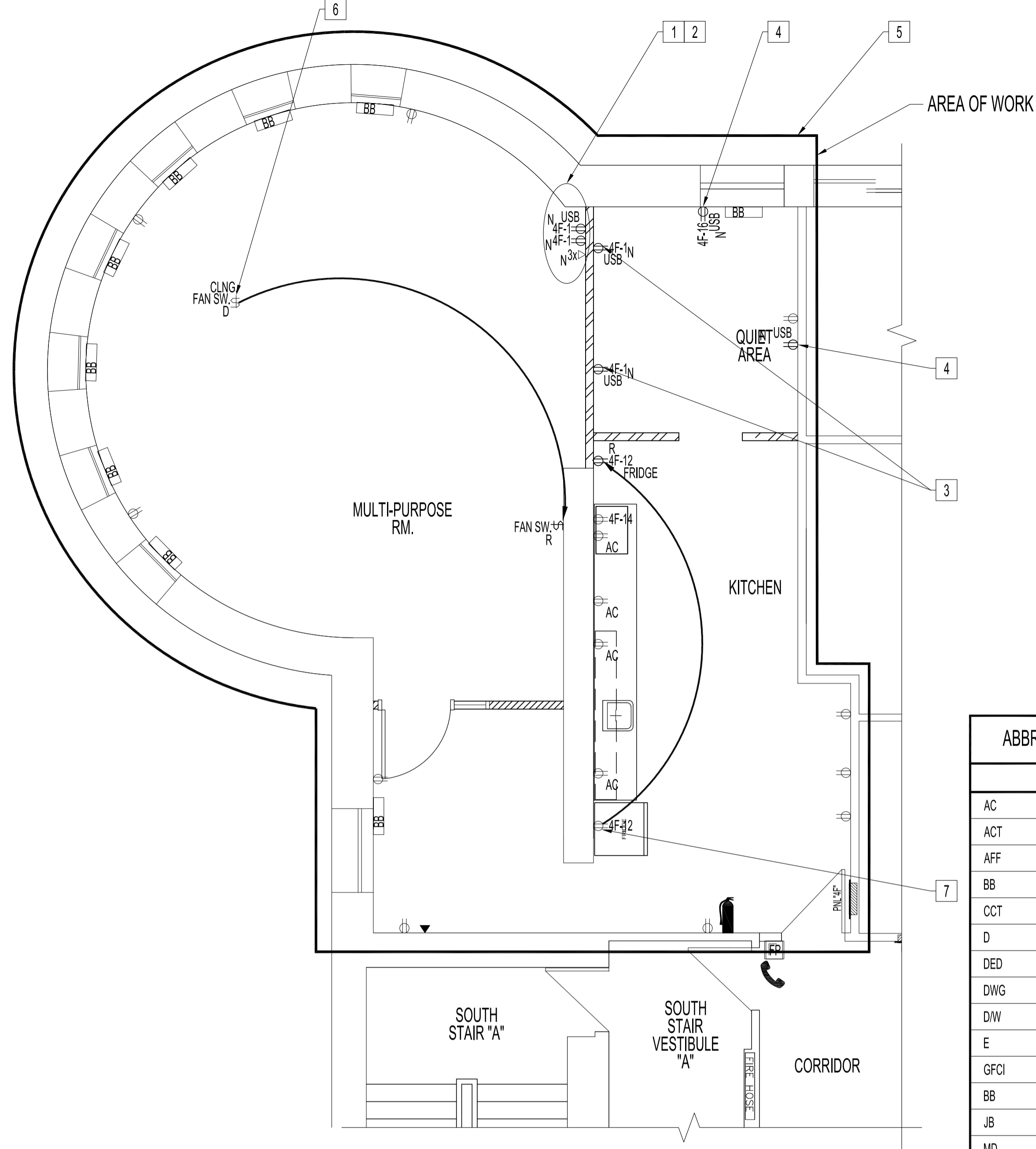


PARTIAL FOURTH FLOOR PLAN - DEMOLITION
SCALE: 1/4"=1'-0"

POWER, DATA & COMMUNICATION DEMOLITION NOTES: "X"

ALSO SEE NOTES & SPECIFICATIONS.
ALL ABANDONED CABLES TO BE REMOVED FROM PLENUM SPACES AS REQUIRED BY LATEST CANADIAN ELECTRICAL CODE.
DO NOT DISTURB OR DISCONNECT ANY WIRING & CABLING IN AREA OF WORK REQUIRED FOR OTHER AREAS.

1. REMOVE POWER POLE FROM CIRCUIT & RELOCATE DATA DROP TO NEW NORTH WALL DEVICE BOX, SEE RENOVATION.



PARTIAL FOURTH FLOOR PLAN - RENOVATION
SCALE: 1/4"=1'-0"

ELECTRICAL POWER, DATA & COMMUNICATIONS RENOVATION NOTES: "X"

ALSO SEE NOTES & SPECIFICATIONS.
ALL DEVICE BOXES, WIRING & CABLING SHALL BE CONCEALED IN WALL CAVITIES IN FINISH AREAS.
ALL WIRING & CABLING IN CEILING SPACE SHALL BE PLENUM RATED AS PER LATEST CEC.

1. PROVIDE (2) NON-GANG DUPLEX RECEPTACLES TO A 120V, 1PH. WITH #12/2 RW90 IN EMT TO NEW 15A CIRCUIT BREAKER. ONE DUPLEX RECEPTACLE TO HAVE USB CHARGER.
2. PROVIDE (3) DATA DROPS WITH DECORA STYLE 4-PORT FACEPLATE (1 TO BE BLANK). TERMINATE (3) HOME RUN DROPS TO 65 GARRY STREET, 3RD FLOOR WIRING CLOSET AVAILABLE PATCH PANEL WITH CATEGORY 6 RJ45 AT BOTH ENDS.
3. PROVIDE COMBINATION DUPLEX RECEPTACLES WITH USB CHARGERS TO A 120V, 1PH. #12/2 RW90 IN EMT TO NEW 15A CIRCUIT BREAKER.
4. REPLACE EXISTING RECEPTACLE WITH COMBINATION DUPLEX RECEPTACLE WITH USB CHARGER.
5. REPLACE ALL DUPLEX RECEPTACLES IN AREA OF WORK WITH NEW WHITE DECORA DUPLEX RECEPTACLES & TAG WITH PANEL-CIRCUIT NUMBERS. PROVIDE BLANK WHITE FACEPLATES TO EMPTY DEVICE BOXES
6. RELOCATE CEILING-MOUNTED HVAC FAN SPEED SWITCH 8" ABOVE EXISTING SPACE THERMOSTAT.
7. RELOCATE FRIDGE RECEPTACLE.

ELECTRICAL LEGEND	
TYPE	DESCRIPTION
⊖	DUPLEX RECEPTACLE
⊖ ¹²	HEIGHT IN INCHES ABOVE FINISH FLOOR TO CENTERLINE OF DEVICE
⊖ ₂	2-GANG DUPLEX RECEPTACLE
⊖ ₂ ¹²	COMBINATION DUPLEX RECEPTACLE/OUTLET & USB CHARGER, 15A, 125V, DECORA TAMPER-RESISTANT RECEPTACLE/OUTLET, NEMA5-15R, 3.6A, 5VDC, 2.0 TYPE A USB CHARGERS, WHITE DECORA, LEVITON T6632-T OR EQUIV.
⊖ ₂ ¹²	SPLIT DUPLEX RECEPTACLE
⊖	LIGHT SWITCH, SINGLE POLE
⊖	JUNCTION BOX (RECESSED)
⊖	FIRE ALARM MANUAL PULL STATION
⊖	SPEAKER
⊖	DATA PORT
⊖	VOICE (PHONE) PORT
⊖	MOTION DETECTOR- SECURITY
⊖	ELECTRICAL PANEL
⊖	THERMOSTAT

ABBREVIATIONS	
	DESCRIPTION
AC	ABOVE COUNTER
ACT	ACOUSTIC CEILING TILE
AFF	ABOVE FINISH FLOOR
BB	BASE BOARD HEATER
CCT	CIRCUIT, CCT= C-PANEL ; CT=CIRCUIT
D	DEMOLITION, REMOVE BACK TO SOURCE
DED	DEDICATED CIRCUIT
DWG	DRAWING
DW	DISHWASHER
E	EXISTING OR 'NO DESIGNATION'
GFCI	GROUND FAULT CIRCUIT INTERRUPTER
BB	BASE BOARD HEATER
JB	JUNCTION BOX
MD	MOTION DETECTOR
MW	MICROWAVE
N	NEW
N.I.C.	NOT IN CONTRACT
NTS	NOT TO SCALE
PNL	PANEL
R	RELOCATED LOCATION & REUSE
RECEPT.	RECEPTACLE
SW	SWITCH
TBD	TO BE DETERMINED
TYP.	TYPICAL
V	VOLT
W	WATT

NOTES:

THESE DRAWINGS SHALL NOT BE SCALED. CONSULT WITH CLIENT AND DESIGNER ON ANY CONCERNS.

ALSO REFER TO ELECTRICAL SPECIFICATIONS.

SUBMISSION OF SITE MARK-UPS, AS-BUILTS, OPERATING & MAINTENANCE MANUALS AND OTHER SUPPORTING DOCUMENTS TO CLIENT ARE MANDATORY AT THE COMPLETION OF THIS PROJECT

THE CONTRACTOR SHALL VISIT THE SITE AND ENSURE ALL DIMENSIONS, DATUM, AND DETAILED INFORMATION SHOWN ARE CORRECT.

THE CONTRACTOR IS TO REVIEW AND COORDINATE ALL ARCHITECTURAL, MECHANICAL AND ELECTRICAL DRAWINGS FOR ADDITIONAL OPENINGS THROUGH FLOORS, WALLS, AND CEILINGS FOR DUCTS, PIPES & ELECTRICAL RISERS AND ALL OPENINGS NOT SHOWN ON DRAWINGS.

ALL OPENINGS THROUGH FIRE ASSEMBLIES INCLUDING FLOORS AND CEILINGS ARE TO BE FIRE STOPPED AND SEALED WITH ULC APPROVED FIRE STOPPING TO MAINTAIN THE INTEGRITY OF THE FIRE SEPARATION, AND PROVIDE A SMOKE-TIGHT BARRIER.

ALL PRODUCTS AND MATERIALS TO BE USED AND INSTALLED SHALL CONFORM WITH MANUFACTURER'S SPECIFICATIONS, APPLICABLE CODES AND AUTHORITY HAVING JURISDICTION.

THE CONTRACTOR SHALL BE RESPONSIBLE TO PATCH AND MAKE GOOD ALL EXISTING CONSTRUCTION AFFECTED BY THE REMOVAL OF ALL ITEMS FORMING PART OF THE RENOVATION WORK.

COMMERCIAL DUTY DUPLEX RECEPTACLES SHALL BE "DECORA" STYLE, WHITE & CSA APPROVED, CW WHITE FACE PLATES MOUNTED 18" ABOVE FINISHED FLOOR OR OTHERWISE NOTED.

LIGHT SWITCHES SHALL BE "DECORA" STYLE & MOUNTED 42" ABOVE FINISHED FLOOR OR OTHERWISE NOTED.

PROVIDE DYNA LABELS ON ALL SWITCHES, PORTS & RECEPTACLES. PANEL SCHEDULE SHALL BE RETYPED & REATTACHED ONTO PANEL TO REFLECT AS-BUILT CONDITIONS.

ALL ABANDONED (KNOWN & UNKNOWN) ELECTRICAL FIXTURES, COMPONENTS, RECEPTACLES & DATA CABLING SHALL BE REMOVED BACK TO SOURCE & TERMINATED AS PER APPLICABLE CODES.

No.	REVISION/DESCRIPTION	BY	DATE
0	ISSUED FOR CONSTRUCTION	DTA	2016 11.30

SEAL

DRAWN	DTA	CHECKED	DTA	DESIGNED	DTA	APPROVED
DATE	2016.10.11	USER				

THE CITY OF WINNIPEG
PLANNING, PROPERTY AND
DEVELOPMENT DEPARTMENT
MUNICIPAL ACCOMMODATIONS DIVISION
3-65 GARRY STREET, R3C 4K4

PROJECT
FORT GARRY PLACE
DESIGN OF MULTI-PURPOSE ROOM AND WORKSTATIONS

65 GARRY STREET, 4TH FLOOR

SHEET TITLE
PARTIAL FOURTH FLOOR PLAN
POWER, DATA, COMMUNICATION
DEMOLITION AND RENOVATION

SCALE	PROJECT No:	SHEET No:
AS SHOWN	2016-169	E1