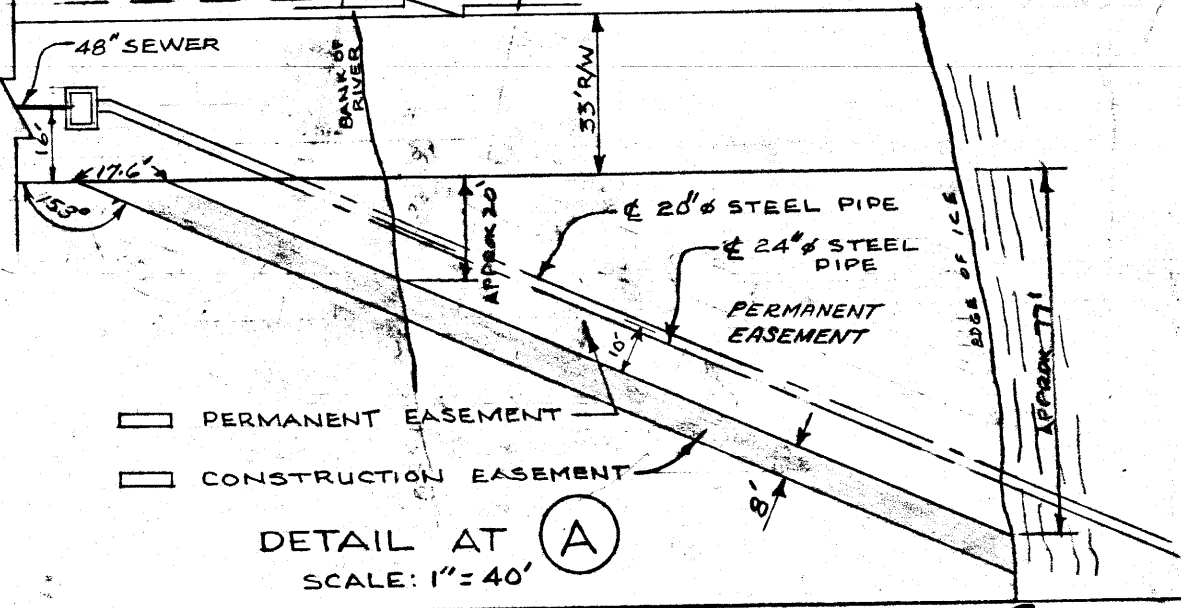


SEE AGREEMENT NO 100



- PERMANENT EASEMENT
- CONSTRUCTION EASEMENT

DETAIL AT (A)
SCALE: 1" = 40'

REVISIONS:

1. 100' NORTH OF ROBLIN ON WEST SIDE OF R/W CHANGED FROM CONSTRUCTION EASEMENT TO PERMANENT EASEMENT. MAY 3/1963 - K.H.B.
2. DISTANCE 1110.5' ADDED OCT. 1963 - V.D.

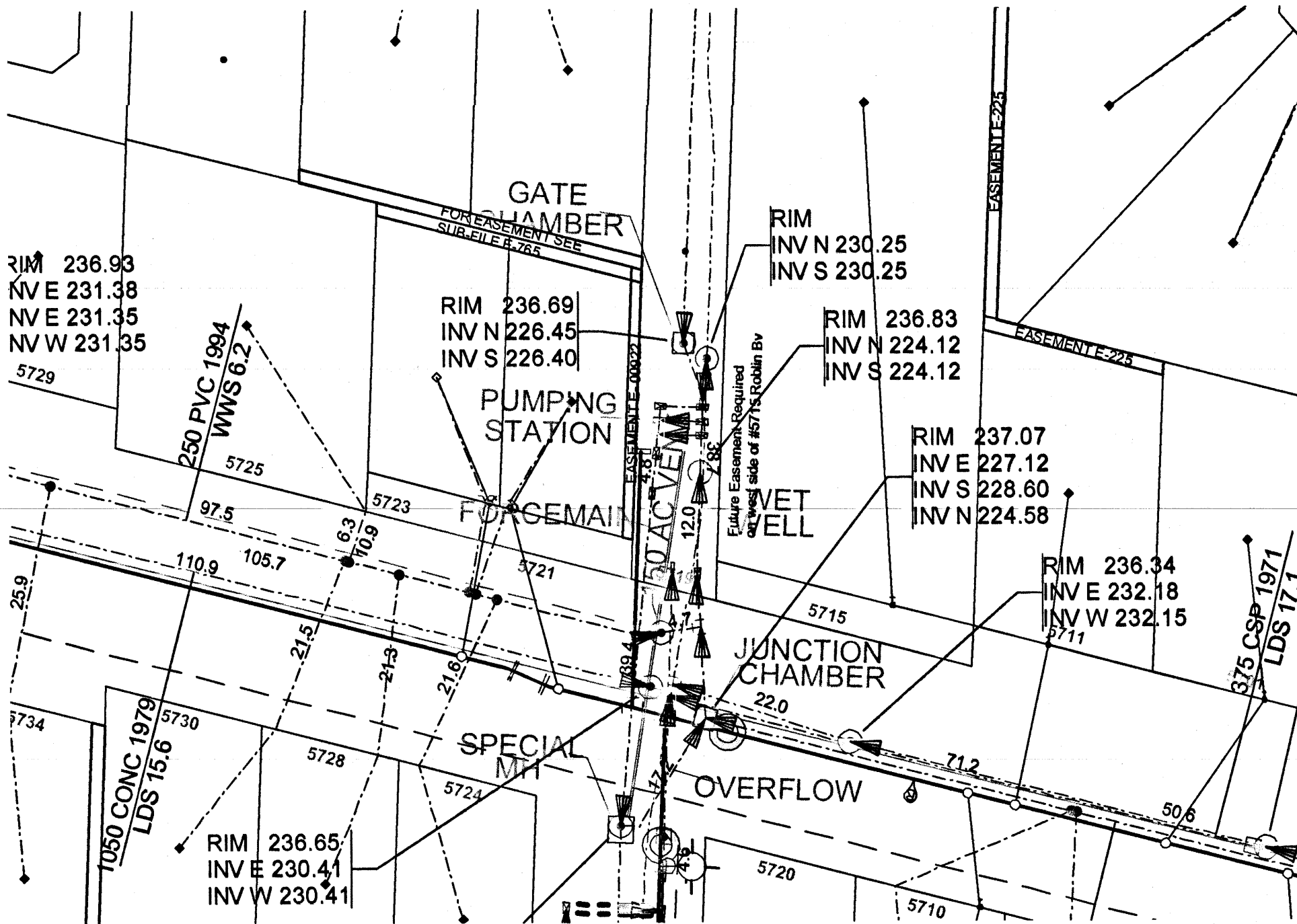
THE METROPOLITAN CORPORATION OF GREATER WINNIPEG
WATERWORKS & WASTE DISPOSAL DIVISION
SEWAGE DISPOSAL BRANCH

CHARLESWOOD INTERCEPTOR
COMMUNITY ROW
CONSTRUCTION EASEMENT

APPROVED BY:	DESIGNED BY:	CHECKED BY: E.H.K.	DWG. No:
	DRAWN BY: K.H.B.	DATE: MARCH 20/63	S-263
SCALES: 1" = 100'			

Site # MS 11791

Micro-fimed 1965



S-263 (28-2)

S-399 (28-2)