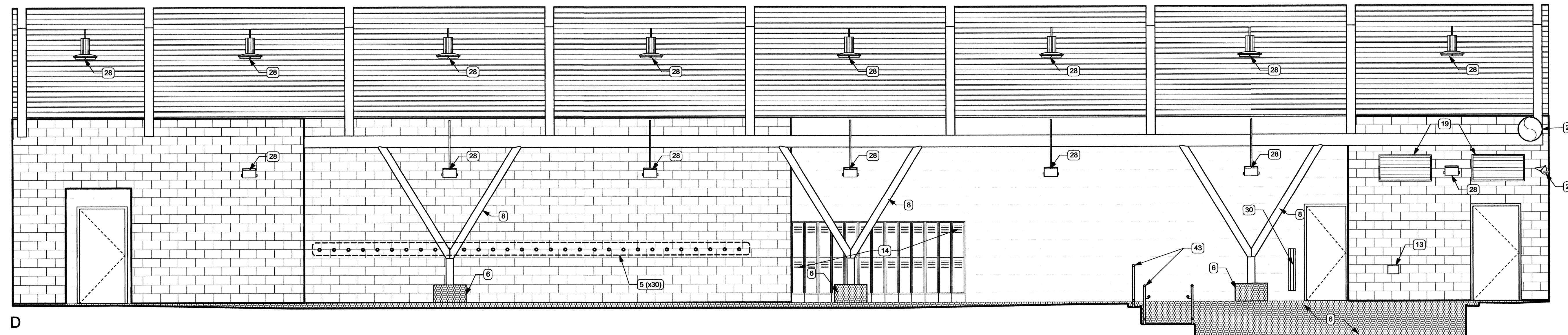
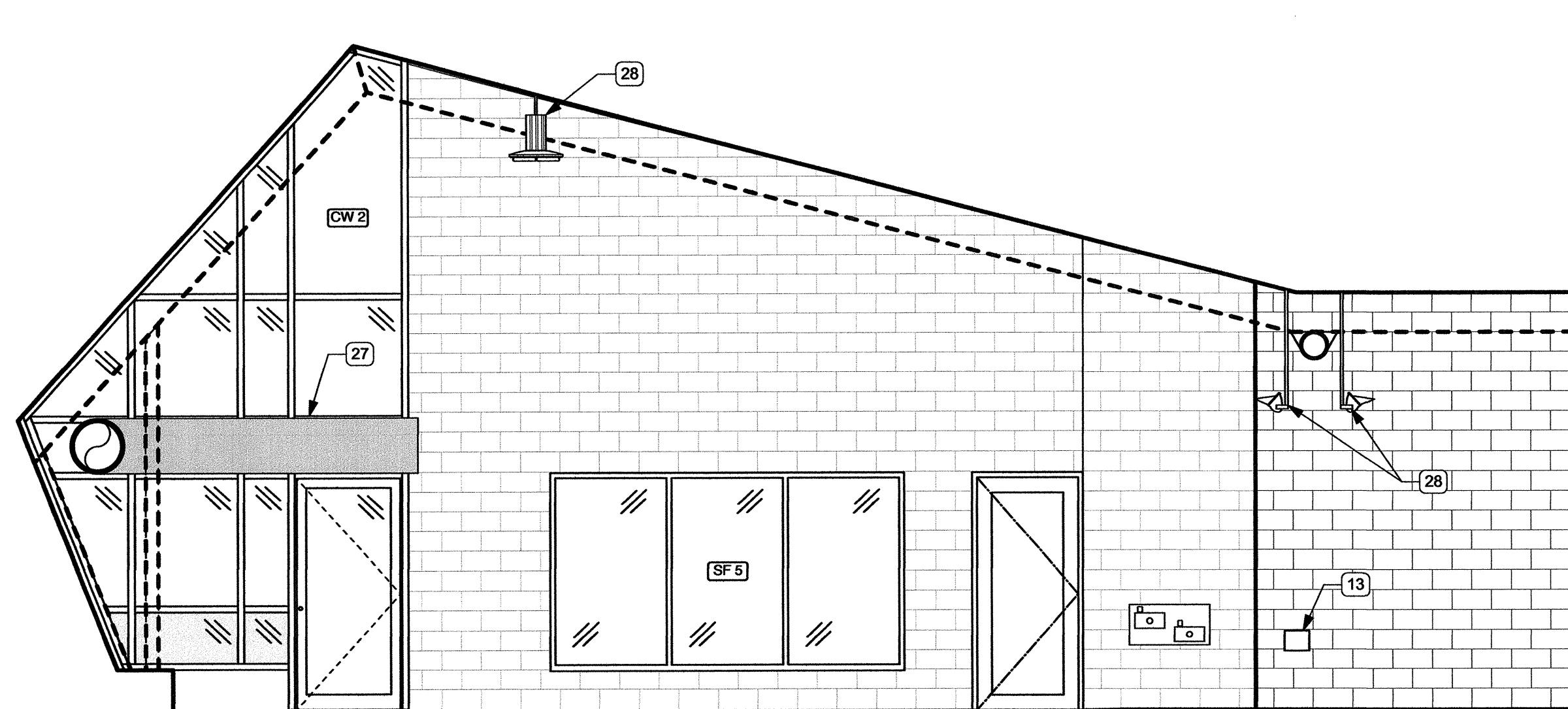


A

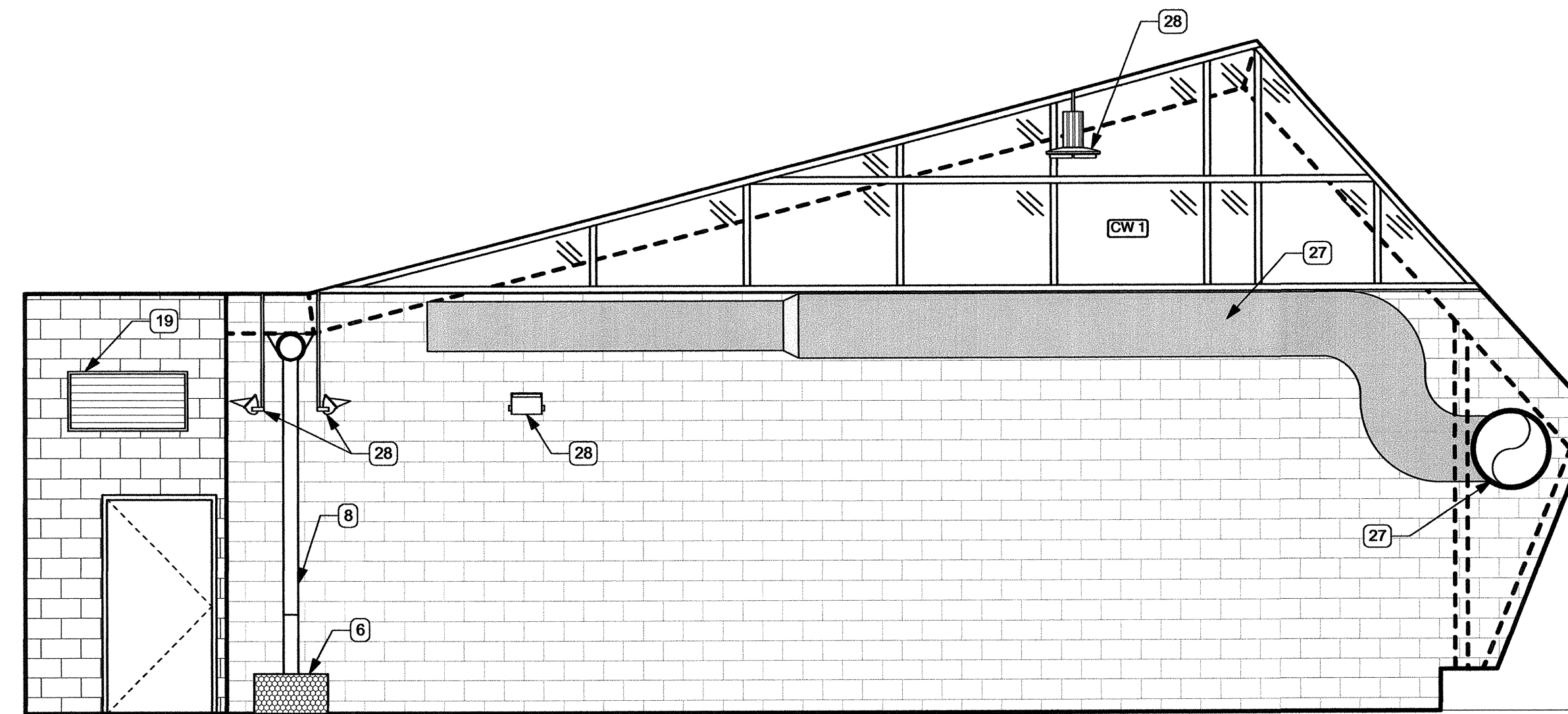
1 SPLASH PAD 123
A7-03 1:50



D



B



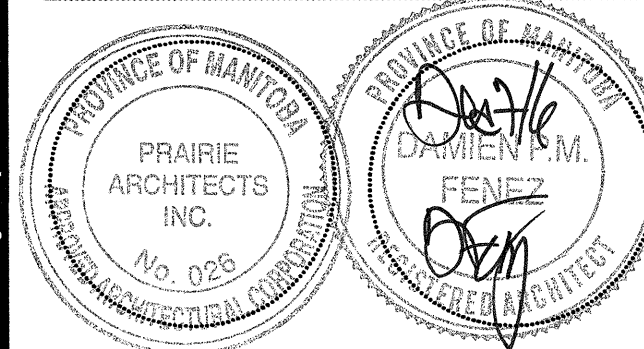
C

- INTERIOR ELEVATION KEYNOTES:**
1. MIRROR
 2. HAND DRYER
 3. GRAB BAR
 4. LAVATORY, REFER TO MECH
 5. HOOK
 6. CERAMIC TILE
 7. SANITARY NAPKIN DISPOSAL
 8. STL COL, REFER TO STRUCT
 9. TOILET PAPER DISPENSER, N.I.C.
 10. SOAP DISPENSER, N.I.C.
 11. CURTAIN TRACK W/ SHOWER CURTAIN
 12. ACCESSIBLE FOLDING SHELF
 13. HOSE BIBB, REFER TO MECH
 14. LOCKERS
 15. TACKBOARD
 16. RECESSED SOAP DISH
 17. SWIMSUIT DRYER (NIC) ROUGH-IN ONLY
 18. FOLD-UP SEAT
 19. MECH GRILLES, REFER TO MECH
 20. RECEPTION DESK, REFER TO DETAILS
 21. SEMI-RECESSED WASTE RECEPTACLES
 22. RECESS IN WD CEILING ABOVE FOR DOOR OPERATOR
 23. GWB FINISH
 24. BABY CHANGE STATION
 25. SEMI-RECESSED FIRE EXTINGUISHER
 26. CHANGE BENCH
 27. EXPOSED DUCT, REFER TO MECH
 28. LIGHT FIXTURE, REFER TO ELEC
 29. INFILL W/ SALVAGED BRICK FROM EXIST BUILDING
 30. AUTO DOOR OPERATOR
 31. LOCKER ROOM BENCH
 32. TOILETURINAL PARTITION
 33. SHOWER VALVE & FAUCET, REFER TO MECH
 34. WALL MOUNTED HYDRANT, REFER TO MECH
 35. FIRE ALARM ANNUNCIATOR PANEL, REFER TO ELEC
 36. ALUMINUM PIN MOUNTED SIGNAGE
 37. ENTRY GATE SYSTEM
 38. ACRYLIC SIGNAGE W/ DOUBLED ACRYLIC BACKER OFFSET ADHERED TO CMU
 39. ALUMINUM RAIL, REFER TO PLAN FOR REMOVABLE SECTIONS
 40. EXISTING GLAZING TO REMAIN, MODIFY AT MULLION AS REQ'D FOR NEW WALL
 41. EXISTING WOOD TO REMAIN
 42. EXISTING BRICK TO REMAIN
 43. RAMP & RAILING INTO POOL, REFER TO DETAILS

Issue / rev.

0	2016.12.08	ISSUED FOR CONSTRUCTION
#	date	issue notes

professional seals



project information

SEVEN OAKS POOL RENOVATION & ADDITION

444 ADSUM DRIVE
WINNIPEG, MB
CANADA

client

CITY OF WINNIPEG
4TH FLOOR - 85 KING ST.
WINNIPEG, MB

drawing information

INTERIOR ELEVATIONS

drawn by: **LW**
approved by: **DF**

scale: **1:100**
date issued: **2016.12.08**
proj. #: **2014.66**
rev. #: **R-0**

SEVEN OAKS POOL RENOVATION & ADDITION
BID OPPORTUNITY NO. 1044-2016

This drawing must not be scaled. The contractor shall verify all dimensions and other data on site prior to commencement of work. All discrepancies, errors, and omissions are to be reported to the architect, drawings and specifications, as instruments of service, in the same being reserved to him. No reproduction may be made without the permission of the architect, and when made, must bear his name. All rights to be returned to the architect on request.