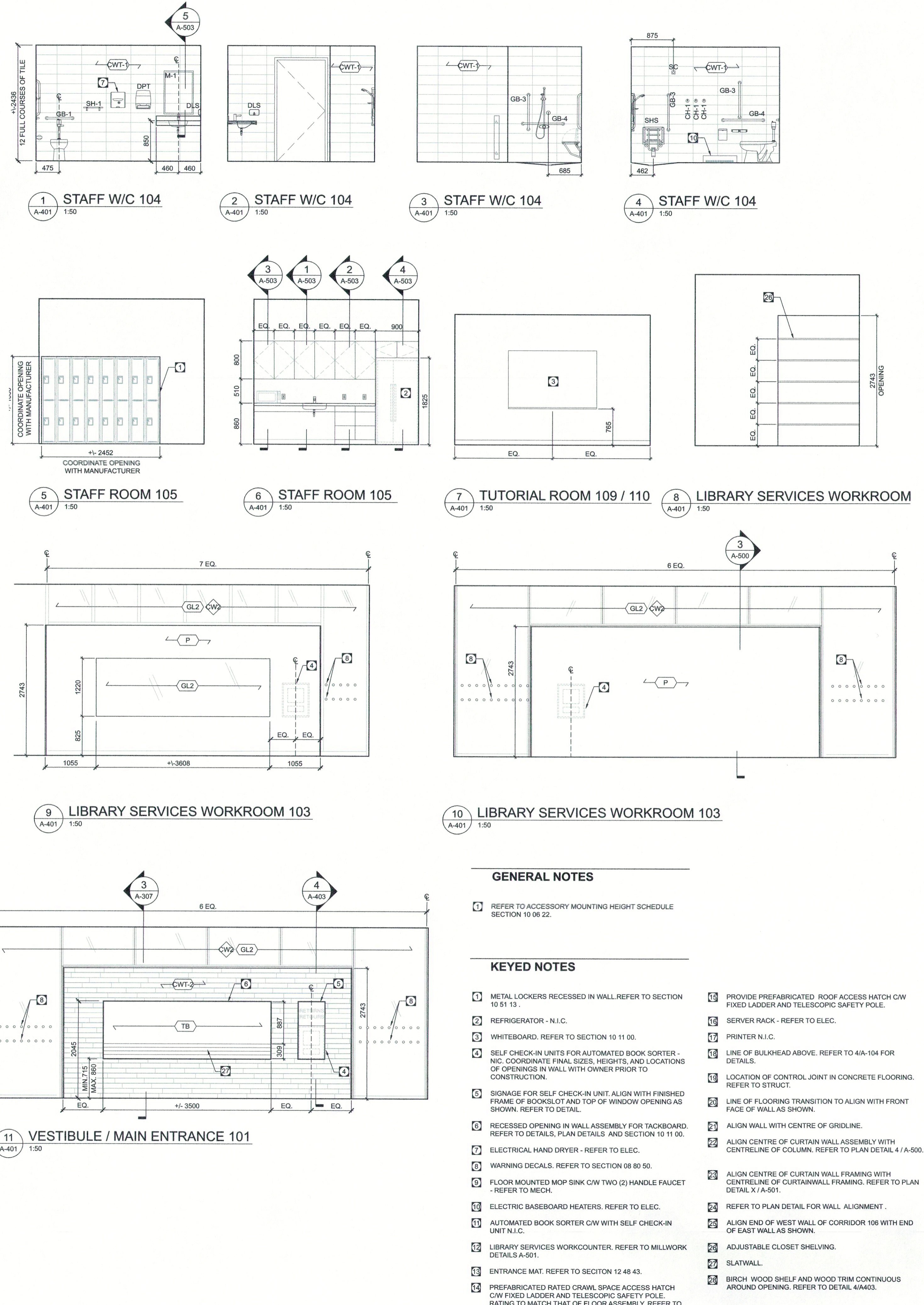


1 ENLARGED PLAN - WEST  
A-401 1:50



11 VESTIBULE / MAIN ENTRANCE 101  
A-401 1:50

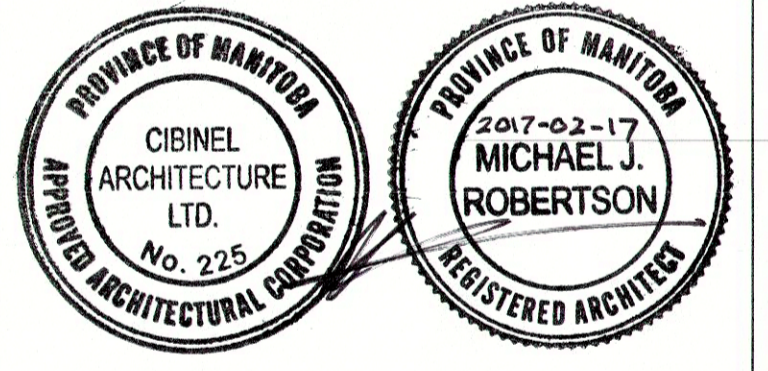
**GENERAL NOTES**

1 REFER TO ACCESSORY MOUNTING HEIGHT SCHEDULE SECTION 10 08 22.

**KEYED NOTES**

- 1 METAL LOCKERS RECESSED IN WALL. REFER TO SECTION 10 51 13.
- 2 REFRIGERATOR - N.I.C.
- 3 WHITEBOARD. REFER TO SECTION 10 11 00.
- 4 SELF CHECK-IN UNITS FOR AUTOMATED BOOK SORTER - N.I.C. COORDINATE FINAL SIZES, HEIGHTS, AND LOCATIONS OF OPENINGS IN WALL WITH OWNER PRIOR TO CONSTRUCTION.
- 5 SIGNAGE FOR SELF CHECK-IN UNIT. ALIGN WITH FINISHED FRAME OF BOOKSLOT AND TOP OF WINDOW OPENING AS SHOWN. REFER TO DETAIL.
- 6 RECESSED OPENING IN WALL ASSEMBLY FOR TACKBOARD. REFER TO DETAILS, PLAN DETAILS AND SECTION 10 11 00.
- 7 ELECTRICAL HAND DRYER - REFER TO ELEC.
- 8 WARNING DECALS. REFER TO SECTION 08 80 50.
- 9 FLOOR MOUNTED MOP SINK C/W TWO (2) HANDLE FAUCET - REFER TO MECH.
- 10 ELECTRIC BASEBOARD HEATERS. REFER TO ELEC.
- 11 AUTOMATED BOOK SORTER C/W WITH SELF CHECK-IN UNIT N.I.C.
- 12 LIBRARY SERVICES WORKCOUNTER. REFER TO MILLWORK DETAILS A-501.
- 13 ENTRANCE MAT. REFER TO SECTION 12 48 43.
- 14 PREFABRICATED RATED CRAWL SPACE ACCESS HATCH C/W FIXED LADDER AND TELESCOPIC SAFETY POLE. RATING TO MATCH THAT OF FLOOR ASSEMBLY. REFER TO 1/A-101 FOR SIZES AND DTL 3/A101.
- 15 PROVIDE PREFABRICATED ROOF ACCESS HATCH C/W FIXED LADDER AND TELESCOPIC SAFETY POLE.
- 16 SERVER RACK - REFER TO ELEC.
- 17 PRINTER N.I.C.
- 18 LINE OF BULKHEAD ABOVE. REFER TO 4/A-104 FOR DETAILS.
- 19 LOCATION OF CONTROL JOINT IN CONCRETE FLOORING. REFER TO STRUCT.
- 20 LINE OF FLOORING TRANSITION TO ALIGN WITH FRONT FACE OF WALL AS SHOWN.
- 21 ALIGN WALL WITH CENTRE OF GRIDLINE.
- 22 ALIGN CENTRE OF CURTAIN WALL ASSEMBLY WITH CENTRELINE OF COLUMN. REFER TO PLAN DETAIL 4 / A-500.
- 23 ALIGN CENTRE OF CURTAIN WALL FRAMING WITH CENTRELINE OF CURTAIN WALL FRAMING. REFER TO PLAN DETAIL X / A-501.
- 24 REFER TO PLAN DETAIL FOR WALL ALIGNMENT.
- 25 ALIGN END OF WEST WALL OF CORRIDOR 106 WITH END OF EAST WALL AS SHOWN.
- 26 ADJUSTABLE CLOSET SHELVING.
- 27 SLAT WALL.
- 28 BIRCH WOOD SHELF AND WOOD TRIM CONTINUOUS AROUND OPENING. REFER TO DETAIL 4/A403.

1 2017.02.17 ISSUED FOR CONSTRUCTION  
No. DATE REVISION / ISSUE



Architect  
**Cibinel Architecture Ltd**  
560 ACADEMY ROAD, WINNIPEG, MB R3N 0E3



Project  
**TRANSCONA LIBRARY**  
1500 PLESSIS ROAD, WINNIPEG, MB

Sheet Title  
-----

Project No. Sheet  
1487 **A-401**

