

1 CRAWLSPACE PLAN
A-101 1:100

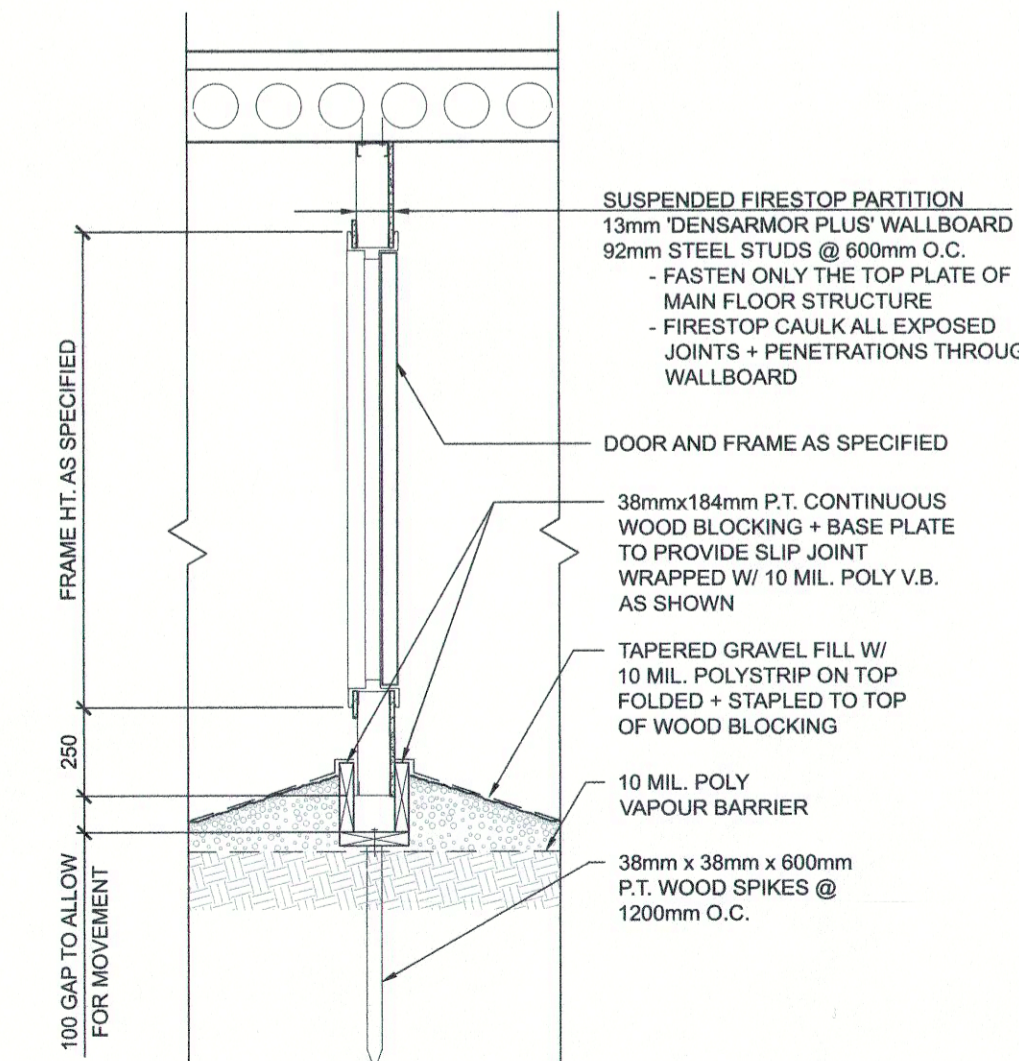
GENERAL NOTES

- ALL DIMENSIONS ARE MEASURED TO FACE OF GRADE BEAM UNLESS OTHERWISE NOTED.
- ALL GRADE BEAMS HAVE BEEN OFFSET FROM GRID LINES AS NOTED.
- MAINTAIN CRAWL SPACE GRADING AT 1:3 MAX. SLOPE.

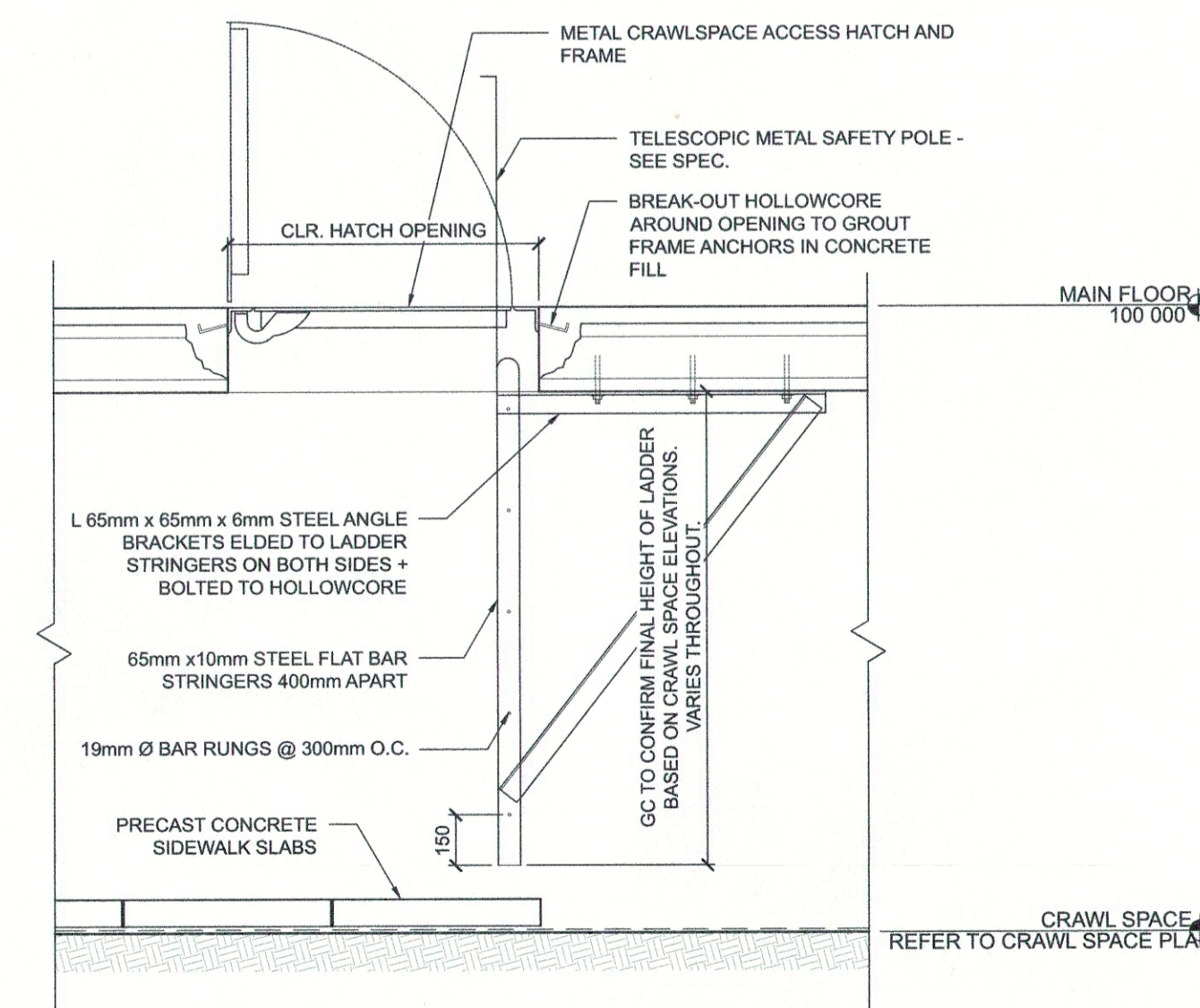
KEYED NOTES

- PREFABRICATED RATED CRAWL SPACE ACCESS HATCH CW FIXED LADDER AND TELESCOPIC SAFETY POLE. RATING TO MATCH THAT OF FLOOR ASSEMBLY. REFER TO 1/A-102 FOR LOCATIONS.
- STEEL BEAM ABOVE.
- PERIMETER WEeping TILE SLOPED 2% MIN. TO SUMP PIT.
- CONCRETE STRUCTURAL SLABS ABOVE FOR MECHANICAL EQUIPMENT. REFER TO 1/A-102, CIVIL, STRUCT., MECH. AND LANDSCAPE.
- 610mm x 610mm PRECAST CONCRETE SIDEWALK SLABS.
- FRAMED FIRESTOP PARTITION. GC TO ENSURE PARTITIONS IN CRAWL SPACE ARE INSTALLED CLEAR OF FLOOR JOISTS ABOVE.

- SUMP PIT CONNECTED TO PERIMETER WEeping TILE. REFER TO MECH.
- COORDINATE NEW SITE SERVICE CONNECTION WITH BUILDING STRUCTURE. SERVICE LINE TO RUN UNDERNEATH GRADE BEAM. REFER TO STRUCT., MECH. AND ELEC.
- SUMP PIT DISCHARGE PIPE TO PENETRATE GRADE BEAM CW PREFIN. MTL. ESCUTCHEON PLATE. REFER TO EXTERIOR ELEVATIONS, STRUCT. AND MECH.
- CONC. STRUCT. ENTRY SLAB ABOVE. REFER TO 1/A-102, CIVIL, LANDSCAPE, AND STRUCT. COORDINATE WITH LANDSCAPE PLANS.
- Ø150 mm NON-PERFORATED DRAIN TILE SLOPED 2% MIN. TO SUMP PIT. INSTALL NON-PERFORATED DRAIN TILE ON ALL VERTICAL DRAIN CONNECTIONS.
- MECHANICAL H.V.A.C. - REFER TO MECH.

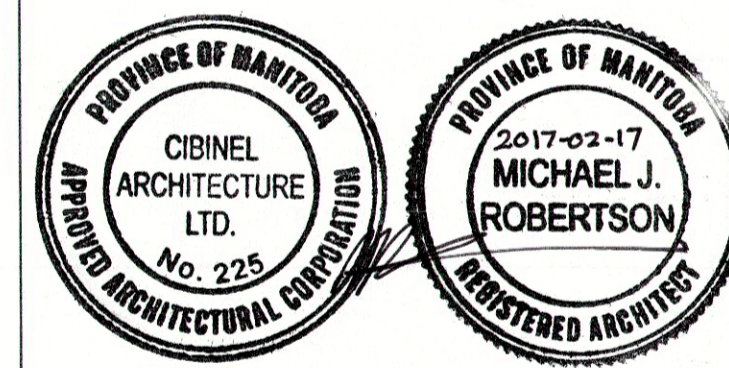


2 CRAWLSPACE FIRESTOP PARTITION
A-101 1:20



3 CRAWLSPACE ACCESS HATCH
A-101 1:20

1 2017.02.17 ISSUED FOR CONSTRUCTION
No. DATE REVISION / ISSUANCE



Architect
Cibinel
Architecture Ltd
560 ACADEMY ROAD WINNIPEG, MB R3N 0E3

Client
Winnipeg
Project
TRANSCONA LIBRARY
1500 PLESSIS ROAD, WINNIPEG, MB

Sheet Title
CRAWLSPACE PLAN & DETAILS

Project No. Sheet
1487 **A-101**