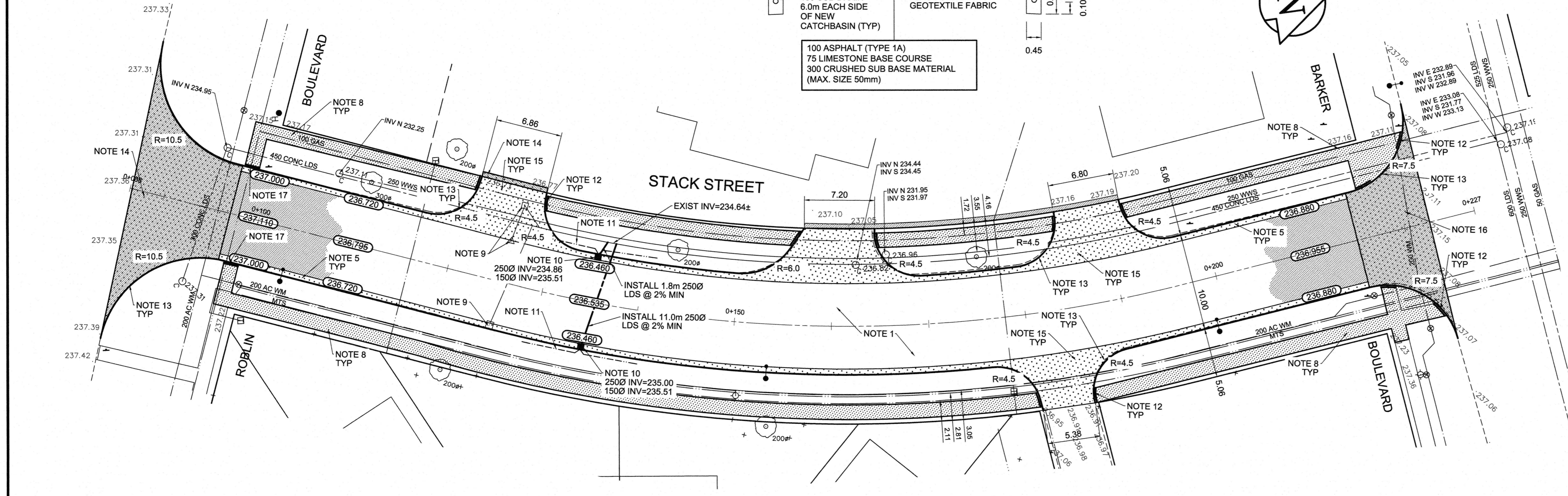


- REFERENCE NOTES**
- PAVEMENT DIMENSIONS ARE TO BACK OF CURB
  - BASELINE IS CENTRE LINE RIGHT-OF-WAY
  - PROPERTY LINES OBTAINED FROM CITY OF WINNIPEG L.B.I.S., AND NO SCALE FACTOR WAS APPLIED
  - REFER TO AECOM FIELD BOOK NO. 4904

- CONSTRUCTION NOTES**
- REMOVE EXISTING CONCRETE PAVEMENT AND CONSTRUCT NEW ASPHALTIC PAVEMENT TYPE 1A (100mm)
  - REMOVE EXISTING FRAME AND COVER AND INSTALL NEW FRAME AND SOLID COVER (AP-005 AND AP-004)
  - ADJUST EXISTING MANHOLE/CATCH BASIN TO GRADE
  - INSTALL NEW CAST IRON RISER RING
  - CONSTRUCT NEW BARRIER CURB AND GUTTER (180mm HT.)
  - ADJUST EXISTING WATER VALVE TO GRADE
  - ADJUST EXISTING CURB STOP
  - RENEW EXISTING 100mm CONCRETE SIDEWALK
  - REMOVE EXISTING CATCHBASIN, CATCH PIT AND ABANDON LEAD
  - INSTALL NEW CURB AND GUTTER INLET c/w CATCHBASIN (SD-024) AND CONNECT TO EXISTING 450mm CONCRETE LAND DRAINAGE SEWER
  - INSTALL 150mm SUBDRAIN 6.0m ON EACH SIDE OF CATCH BASIN.
  - CONSTRUCT NEW RAMP CURB (10mm HT. INTEGRAL)
  - CONSTRUCT NEW MODIFIED BARRIER CURB (180mm HT. INTEGRAL)
  - CONSTRUCT NEW 200mm REINFORCED CONCRETE PAVEMENT c/w 50mm ASPHALT PAVEMENT TYPE 1A
  - CONSTRUCT NEW 150mm REINFORCED CONCRETE PAVEMENT
  - CONSTRUCT NEW 150mm REINFORCED CONCRETE PAVEMENT c/w 50mm ASPHALT PAVEMENT TYPE 1A
  - CONSTRUCT NEW RAMP CURB AND GUTTER (10mm HT. INTEGRAL)



**AECOM**  
Certificate of Authorization  
AECOM Canada Ltd.  
No. 4671 Date: MAR 11/16

**METRIC**  
WHOLE NUMBERS INDICATE MILLIMETRES  
DECIMALIZED NUMBERS INDICATE METRES

EXISTING	LEGEND - PLAN	PROPOSED	EXISTING	LEGEND - PLAN	PROPOSED	EXISTING	LEGEND - PROFILE	PROPOSED
150 mm W.M.	WATERMAIN	150 mm W.M.	---	HYDRO	---	---	C PROFILE	---
Hydrant symbol	HYDRANT	Hydrant symbol	---	M.T.S.	---	---	OUTSIDE GUTTER	---
Valve symbol	VALVE	Valve symbol	---	CONCRETE	---	---	INSIDE GUTTER	---
300mm L.D.S.	LAND DRAINAGE SEWER	300mm L.D.S.	---	ASPHALT	---	---	N/W PROPERTY LINE	---
250mm W.W.S.	WASTEWATER SEWER	250mm W.W.S.	---	PROPERTY LINE	---	---	S/E PROPERTY LINE	---
Manhole symbol	MANHOLE	Manhole symbol	---	SURVEY BAR	---	---		
Catch basin symbol	CATCH BASIN	Catch basin symbol	---	ELEVATION	(35.750)	---		
Catch pit symbol	CATCH PIT	Catch pit symbol	---	TREE	---	---		
Junction symbol	JUNCTIONS	Junction symbol	---	SIDEWALK RAMP	---	---		
Culvert symbol	CULVERT	Culvert symbol	---	CONCRETE SIDEWALK	---	---		
Gas symbol	GAS	Gas symbol	---	FENCE	---	---		

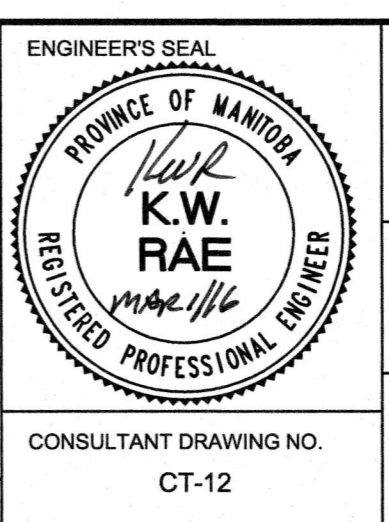
**LOCATION APPROVED UNDERGROUND STRUCTURES**

SUPV. U/G STRUCTURES COMMITTEE DATE

**NOTE:**  
LOCATION OF UNDERGROUND STRUCTURES AS SHOWN ARE BASED ON THE BEST INFORMATION AVAILABLE. BUT NO GUARANTEE IS GIVEN THAT ALL EXISTING UTILITIES ARE SHOWN OR THAT THE GIVEN LOCATIONS ARE EXACT. CONFIRMATION OF EXISTENCE AND EXACT LOCATION OF ALL SERVICES MUST BE OBTAINED FROM THE INDIVIDUAL UTILITIES BEFORE PROCEEDING WITH CONSTRUCTION.

B.M. 47 - 026 N side Roblin Blvd in median of Barker Blvd, Tbit 12.2m N of C.L. Pav't W. End lanes Roblin Blvd, & ELEV. 237.183 5.6m W of C.L. Pav't N. End lanes Barker Blvd

DESIGNED BY	BC	CHECKED BY	KWR
DRAWN BY	JC/SS/RMT	APPROVED BY	
HOR. SCALE:	1:250	RELEASED FOR CONSTRUCTION BY:	
VERTICAL:	1:10	DATE	MAR 11/16



**THE CITY OF WINNIPEG**  
PUBLIC WORKS DEPARTMENT  
ENGINEERING DIVISION

2016 LOCAL STREET RENEWAL PROGRAM

STACK STREET - ROBBLIN BOULEVARD TO BARKER BOULEVARD  
ASPHALT RECONSTRUCTION  
ROBBLIN BOULEVARD TO BARKER BOULEVARD

CITY DRAWING NUMBER  
SHEET 12 OF 12

CONSULTANT DRAWING NO. CT-12