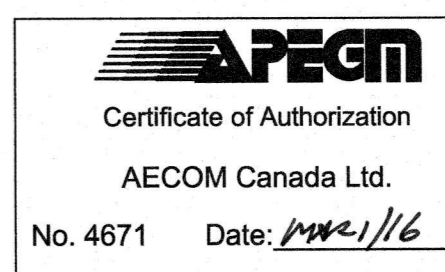


REFERENCE NOTES

- A. PAVEMENT DIMENSIONS ARE TO BACK OF CURB
- B. BASELINE IS CENTRE LINE RIGHT-OF-WAY
- C. PROPERTY LINES OBTAINED FROM CITY OF WINNIPEG L.B.I.S., AND NO SCALE FACTOR WAS APPLIED
- D. REFER TO AECOM FIELD BOOK NO. ----

CONSTRUCTION NOTES

1. PLACE NEW ASPHALTIC PAVEMENT TYPE 1A (AVG THICKNESS 85mm)
2. REMOVE EXISTING CONCRETE PAVEMENT AND CONSTRUCT NEW 150mm REINFORCED CONCRETE PAVEMENT c/w 85mm ASPHALT OVERLAY
3. REMOVE EXISTING CONCRETE PAVEMENT AND CONSTRUCT NEW 150mm REINFORCED CONCRETE PAVEMENT
4. REMOVE EXISTING CATCH PIT AND INSTALL NEW CURB AND GUTTER INLET c/w CATCH PIT (SD-023) AND CONNECT TO EXISTING CATCH BASIN
5. ADJUST EXISTING MANHOLE/CATCH BASIN TO GRADE
6. REMOVE EXISTING MOUNTABLE CURB AND CONSTRUCT NEW BARRIER CURB (100mm HT. DOWELLED)
7. CONSTRUCT NEW BARRIER CURB (100mm HT. SEPARATE)
8. ADJUST EXISTING WATER VALVE TO GRADE
9. REMOVE AND REINSTALL EXISTING PAVERS
10. CONSTRUCT NEW LIP CURB (40mm HT. INTEGRAL)



METRIC
WHOLE NUMBERS INDICATE MILLIMETRES
DECIMALIZED NUMBERS INDICATE METRES

EXISTING	LEGEND - PLAN	PROPOSED	EXISTING	LEGEND - PLAN	PROPOSED	EXISTING	LEGEND - PROFILE	PROPOSED
	WATERMAIN			HYDRO				
	HYDRANT			M.T.S.				
	VALVE			CONCRETE				
	LAND DRAINAGE SEWER			ASPHALT				
	WASTEWATER SEWER			PROPERTY LINE				
	MANHOLE			SURVEY BAR				
	CATCH BASIN			ELEVATION				
	CATCH PIT			TREE				
	JUNCTIONS			SIDEWALK RAMP				
	CULVERT			CONCRETE SIDEWALK				
	GAS			FENCE				

LOCATION APPROVED UNDERGROUND STRUCTURES

SUPV. U/G STRUCTURES COMMITTEE DATE

NOTE:
LOCATION OF UNDERGROUND STRUCTURES AS SHOWN ARE BASED ON THE BEST INFORMATION AVAILABLE. BUT NO GUARANTEE IS GIVEN THAT ALL EXISTING UTILITIES ARE SHOWN OR THAT THE GIVEN LOCATIONS ARE EXACT. CONFIRMATION OF EXISTENCE AND EXACT LOCATION OF ALL SERVICES MUST BE OBTAINED FROM THE INDIVIDUAL UTILITIES BEFORE PROCEEDING WITH CONSTRUCTION.

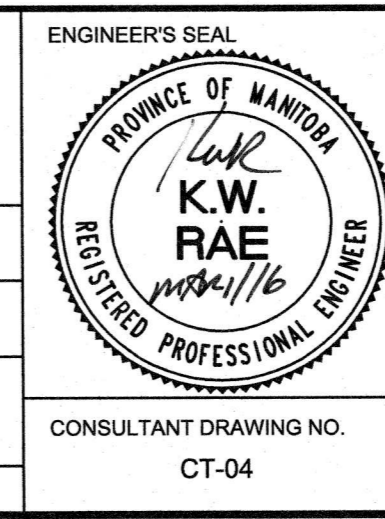
B.M. 40 - 042 83R686 N side Saskatchewan Ave @ Hamilton Ave
ELEV. 238.985 1.7m c/w pipe, 9.7m E of W.L. Hamilton produced from S. & 11m S of S'most track on N side Saskatchewan

DESIGNED BY	BC	CHECKED BY	KWR
DRAWN BY	BC	APPROVED BY	
ISSUED FOR TENDER	03/02/2016	BC	
ISSUED FOR REVIEW	02/05/2016	BC	
NO. REVISIONS	DATE	BY	DATE

HOR. SCALE: 1:250
VERTICAL: 1:10

RELEASED FOR CONSTRUCTION BY:

DATE: MAR 11/16



THE CITY OF WINNIPEG
PUBLIC WORKS DEPARTMENT
ENGINEERING DIVISION

2016 LOCAL STREET RENEWAL PROGRAM

ACHESON DRIVE - WEST LIMIT TO ARTHUR CREEK DRIVE S. LEG
REHABILITATION / ASPHALT RECONSTRUCTION
STATION 0+140 TO STATION 0+260

CITY DRAWING NUMBER
SHEET 04 OF 12

CONSULTANT DRAWING NO. CT-04