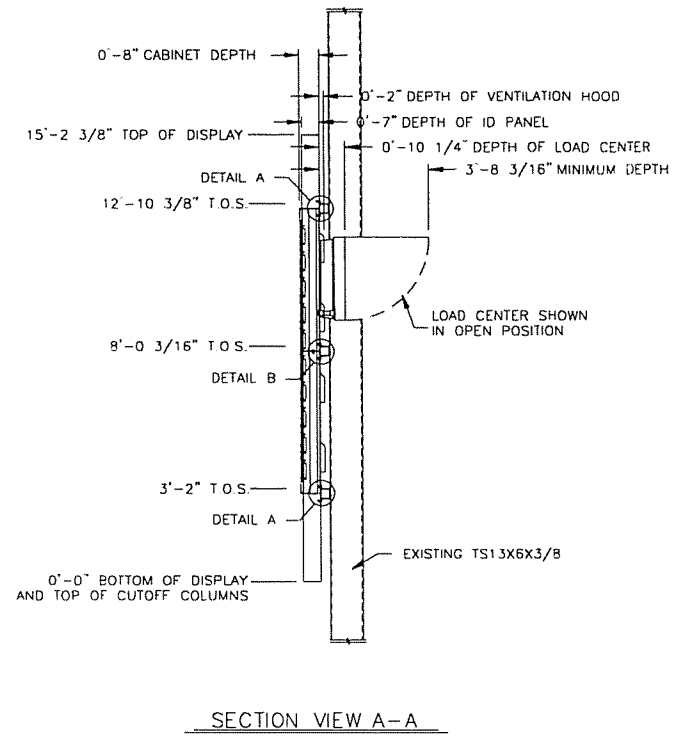
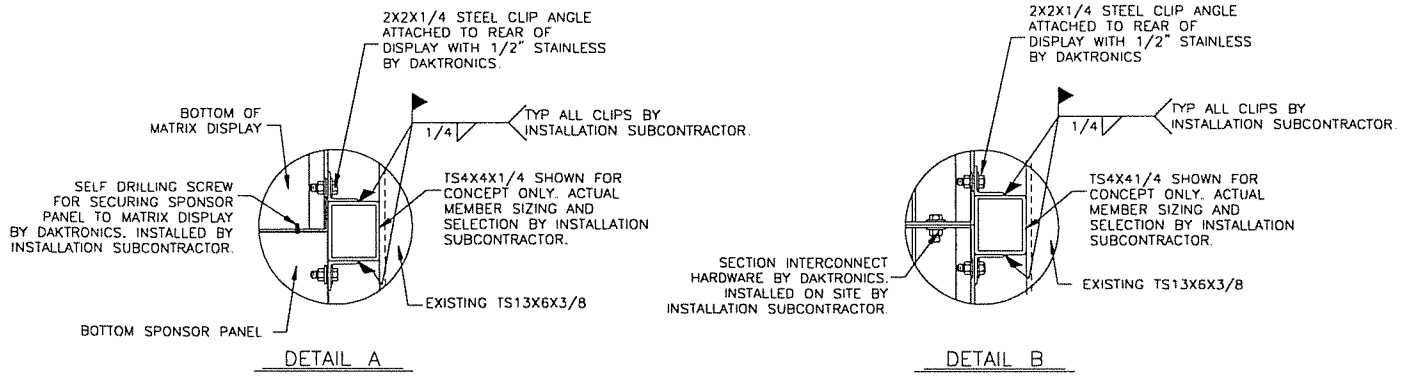
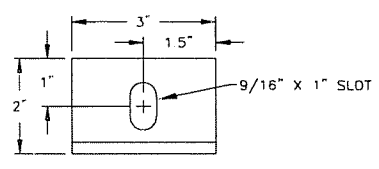
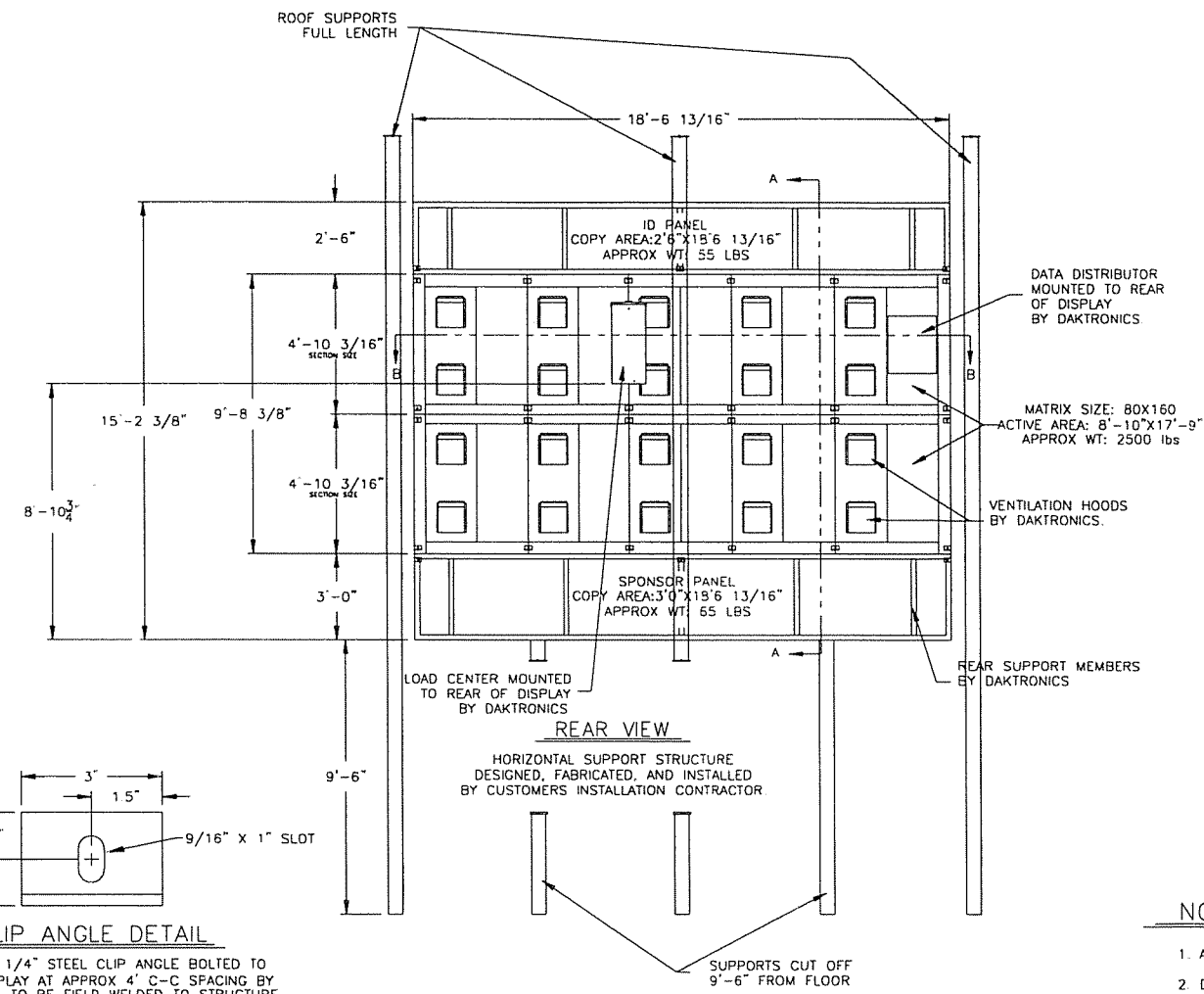
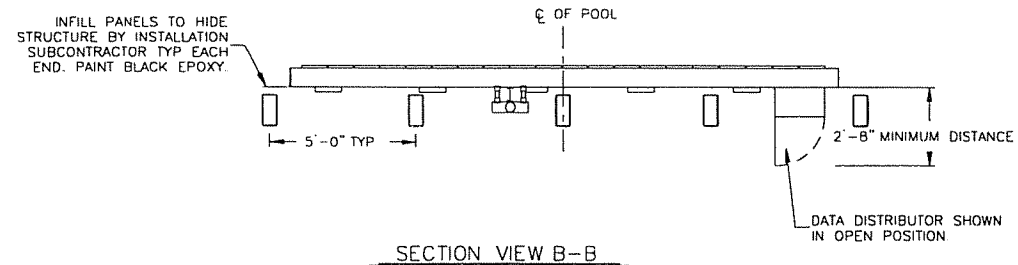


VENTILATION NOTE

VENTILATION: IN ENCLOSED CATWALK SITUATIONS, SIXTEEN SQ INCHES OF UNOBSTRUCTED OPENING PER FAN MUST BE PROVIDED TO INSURE ADEQUATE DISPLAY COOLING. ALLOWANCES MUST BE MADE TO COMPENSATE FOR THE PERCENTAGE OF SCREEN IN THE MATERIAL COVERING THE OPENINGS IN THE CATWALK STRUCTURE. IF AIR MUST BE FORCED INTO THE ENCLOSED CATWALK, 120 CUBIC FEET PER MINUTE MUST BE PROVIDED PER FAN. THIS DISPLAY HAS 10 FANS.



NOTES:

- ALL DIMENSIONS ARE IN FEET AND INCHES
- DISPLAY IS ALL ALUMINUM CONSTRUCTION WITH STEEL CLIP ANGLES
- SERVICE ACCESS FOR MAINTENANCE IS FROM THE FRONT FOR ALL ELECTRONICS AND LAMPS. REAR SERVICE ACCESS FOR LOAD CENTER AND DATA DISTRIBUTOR.
- STRUCTURE TO BE DESIGNED PER LOCAL CODES AND CONDITIONS. STRUCTURE DESIGN, FABRICATION, AND CERTIFICATION, IS THE RESPONSIBILITY OF OTHERS.
- SIGNAL CABLE SUPPLIED BY DAKTRONICS. CONDUIT AND LABOR TO PULL CABLE BY OTHERS.
- DISPLAY WILL SHIP IN FOUR (4) SECTIONS: APPROXIMATE DISPLAY WEIGHTS ARE: MATRIX DISPLAY @2 SECTIONS--2500 LBS TOTAL SPONSOR PANEL @1 SECTION--65 LBS TOTAL ID PANEL @1--55 LBS TOTAL TOTAL ESTIMATED WEIGHT = 2620 LBS
- NO DRILLING ALLOWED ON SUPPORT STRUCTURE.
- REMOVABLE LIFTEYES WILL BE IN TOP OF DISPLAY SECTIONS FOR LIFTING. HOLES IN TOP OF DISPLAY MUST BE PLUGGED WITH BOLTS, SILICONE OR BY SOME OTHER MEANS WHEN THE LIFTEYES ARE REMOVED AFTER INSTALLATION
- REFER TO SYSTEM RISER DIAGRAM FOR POWER & SIGNAL SPECIFICATIONS.
- ALL STEEL PRIMED WITH RUST INHIBITOR AND PAINTED BY STEEL FABRICATOR. ALL FIELD WELDS TO BE PRIMED AND PAINTED AFTER WELDING 2 PART EPOXY BLACK.
- ALL WORK TO BE DONE IN ACCORDANCE WITH OSHA REGULATIONS AND ALL LOCAL CODES APPLY
- INSTALLATION SUBCONTRACTOR RESPONSIBLE FOR JOBSITE SAFETY
- ALL GAS TIGHT WELDS SHALL BE IN ACCORDANCE WITH THE LATEST AWS STANDARDS, USING E70XX ELECTRODE AND BY A DAKTRONICS INSTALLATION SUBCONTRACTOR CERTIFIED WELDER.
- INSTALLATION SUBCONTRACTOR IS TO FIELD VERIFY ALL DIMENSIONS AND CONDITIONS PRIOR TO INSTALLATION

REV.	DATE	DESCRIPTION	BY	APPR.
2	17FEB98	UPDATED ALL HORIZONTAL STEEL MEMBERS TO TS4X4X1/4 AS PER WASHFIELD FAX (17FEB98)	RUL	
1	15FEB98	ADDED NOTES AS PER THE SUBMITTAL REVIEW.	RUL	

DAKTRONICS, INC. BROOKINGS, SD 57006

PROJ: PAN AM POOL

TITLE: SHOP DWG, AE-2000-80160-9-RGB

DES. BY: R.LUTZ DRAWN BY: R.LUTZ DATE: 23JAN98

APPR. BY: R.LUTZ

SCALE: 1/2"=1' 7949-E10C-99157