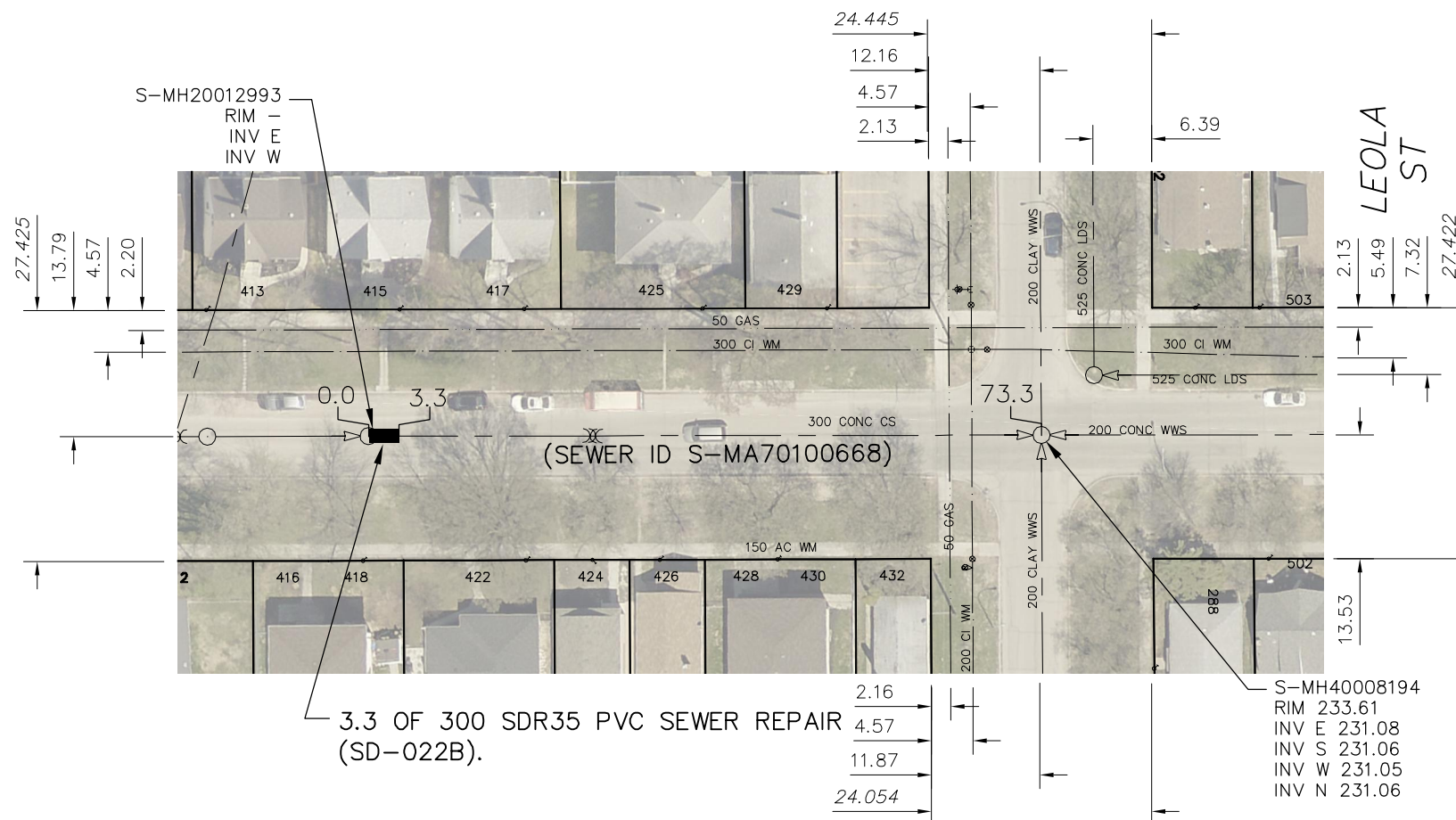
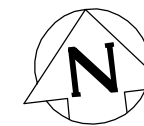


REGENT AVENUE EAST



SEWER JUNCTION INFORMATION FROM SEWER VIDEO INSPECTION		
SEWER ID S-MA70100668		
DISTANCE FROM MH ID S-MH70054491		
DISTANCE	DIAMETER	CLOCK
5.0	150	10
18.2	150	2
18.8	150	10
24.4	150	2
37.3	150	3
41.4	150	10
45.1	150	2
50.3	150	10

WARNING

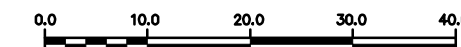
IF POWER EQUIPMENT OR EXPLOSIVES ARE TO BE USED FOR EXCAVATION ON THIS PROJECT THE CONTRACTOR MUST:

- 1) NOTIFY THE GAS COMPANY OF THE PROPOSED LOCATION OF EXCAVATION.
- 2) TAKE PRECAUTION TO AVOID DAMAGE TO GAS COMPANY INSTALLATIONS.

SEE PROVINCIAL REGULATION 210/72 FOR DETAILS

METRIC

WHOLE NUMBERS INDICATE MILLIMETRES
DECIMALIZED NUMBERS INDICATE METRES



LOCATION APPROVED UNDERGROUND STRUCTURES

SUPV. U/G STRUCTURES COMMITTEE DATE

NOTE:

LOCATION OF UNDERGROUND STRUCTURES AS SHOWN ARE BASED ON THE BEST INFORMATION AVAILABLE BUT NO GUARANTEE IS GIVEN THAT ALL EXISTING UTILITIES ARE SHOWN OR THAT THE GIVEN LOCATIONS ARE EXACT. CONFIRMATION OF EXISTENCE AND EXACT LOCATION OF ALL SERVICES MUST BE OBTAINED FROM THE INDIVIDUAL UTILITIES BEFORE PROCEEDING WITH CONSTRUCTION.

B.M.
ELEV.

NO.	REVISIONS	DATE	BY

DESIGNED BY	TS	CHECKED BY	SC
DRAWN BY	RS	APPROVED BY	KZ
SCALE:	1:750	RELEASED FOR CONSTRUCTION	
HORIZONTAL			
VERTICAL			
DATE	2015 12 16	DATE	

PLOT DATE: 2015 12 16

ENGINEER'S SEAL

ORIGINAL SIGNED
BY S.R.J. COURNOYER
12/07/15

CONSULTANT DRAWING NUMBER

BID OPPORTUNITY: 971-2015
CONTRACT NUMBER: 4



THE CITY OF WINNIPEG

WATER AND WASTE DEPARTMENT
ENGINEERING DIVISION

2015 SEWER RENEWALS
BY EXTERNAL POINT REPAIR
REGENT AVENUE EAST
1ST MH W OF LEOLA STREET TO
MH AT LEOLA STREET

SHEET 34 OF 41

CITY DRAWING NUMBER

11151

FILE PATH: R:\DRAWINGS\SEWER\2015 RENEWALS\RENEWALS & ASSOCIATED WORKS\Contract 4\Contract 4_Final\
FILE NAME: REGENT_S-MA70100668.dwg