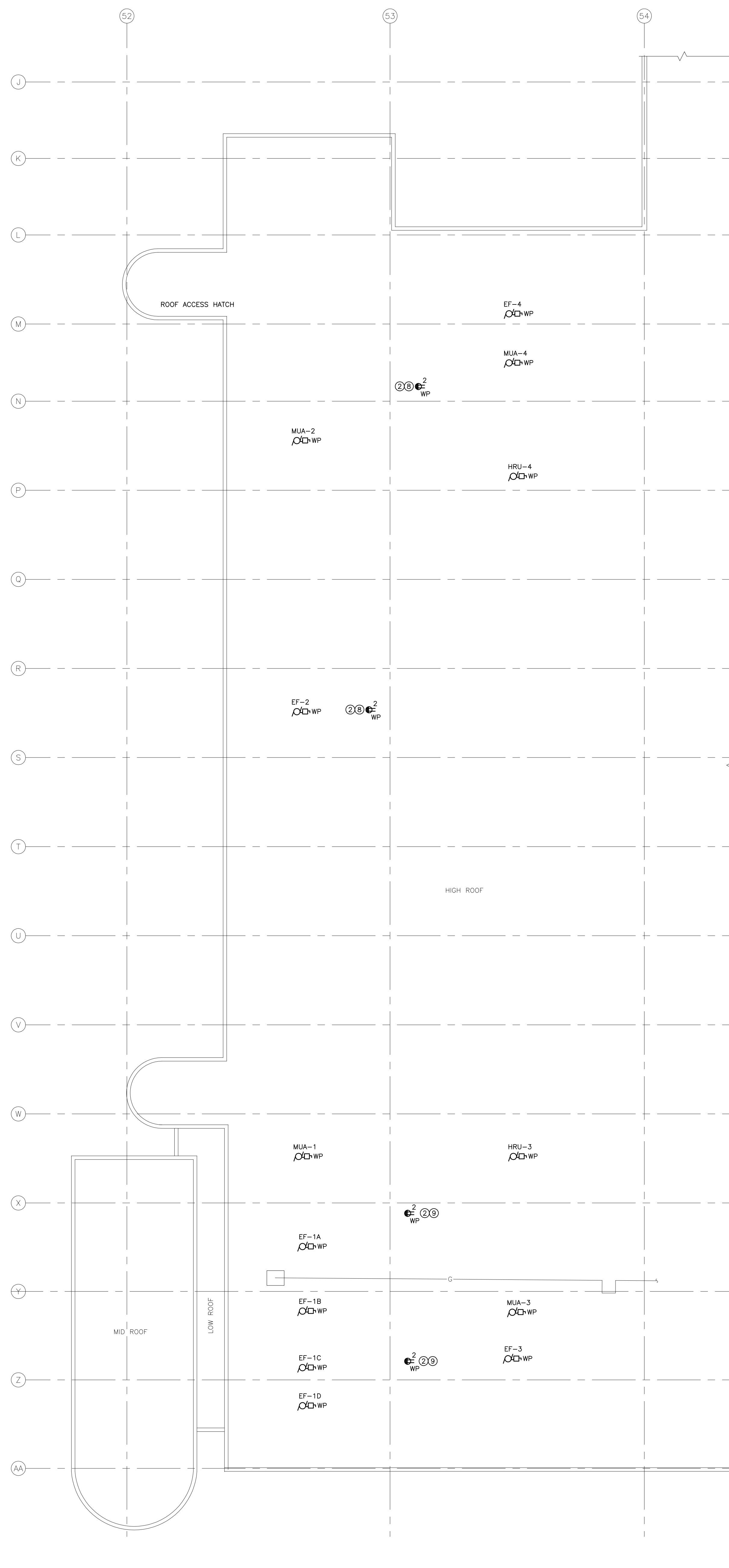


**1 MAIN FLOOR PLAN - NEW CONSTRUCTION - ELECTRICAL**  
 SCALE: 1/16" = 1'-0"



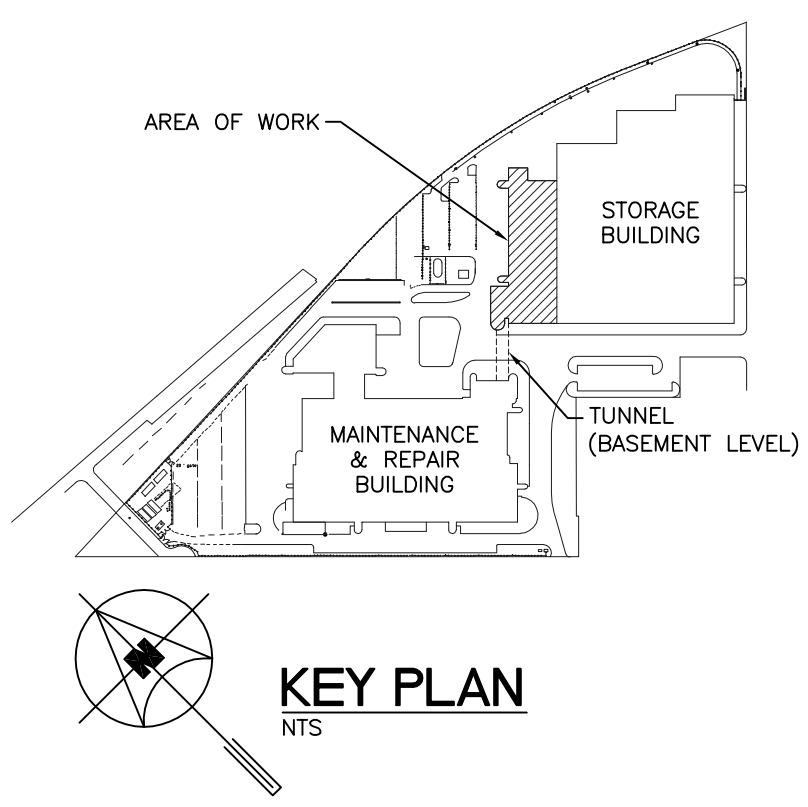
**2 ROOF PLAN - NEW CONSTRUCTION - ELECTRICAL**  
 SCALE: 1/16" = 1'-0"

**GENERAL NOTES**

- A. ELECTRICAL SUB-CONTRACTOR SHALL BE RESPONSIBLE FOR COORDINATING EXACT LAYOUT, ROUTING, ETC. VERIFY EXISTING SERVICES ON SITE.
- B. ELECTRICAL SUB-CONTRACTOR SHALL ENSURE COORDINATION BETWEEN ALL TRADES AND CONSULTANT, ON AND OFF SITE, AS REQUIRED FOR INSTALLATION OF ELECTRICAL EQUIPMENT.
- C. PROVIDE LIQUID TIGHT CONNECTORS ON ALL OUTDOOR CONDUITS.
- D. FINAL CONNECTIONS TO EQUIPMENT AND INTER-CONNECTIONS BETWEEN EQUIPMENT WHERE NECESSARY ARE TO BE MADE BY ELECTRICAL SUB-CONTRACTOR.
- E. CONFIRM ALL EQUIPMENT CONNECTIONS AND ELECTRICAL REQUIREMENTS WITH EQUIPMENT SUPPLIER PRIOR TO ROUGH-IN. MAKE ADJUSTMENTS AND INSTALL AS PER SUPPLIER'S REQUIREMENTS AT NO ADDITIONAL CHARGE.
- F. THIS BUILDING MAY CONTAIN ASBESTOS. REFER TO FRONT END SPECIFICATIONS FOR FURTHER INFORMATION.
- G. COORDINATE FINAL LOCATION OF ALL EQUIPMENT WITH MECHANICAL.
- H. ELECTRICAL SUB-CONTRACTOR TO VISIT SITE DURING BID AND VERIFY ALL EXISTING SERVICES ON SITE PRIOR TO SUBMITTING BID. REPORT ANY DISCREPANCIES TO SMS ENGINEERING DURING BID PERIOD.
- I. INSTALL NEW ELECTRICAL EQUIPMENT WHILE EXISTING EQUIPMENT IS OPERATIONAL, IN ORDER TO MINIMIZE TIE-OVER SHUT-DOWNS AND SERVICE DISRUPTIONS. CO-ORDINATE FULLY WITH MECHANICAL FOR THE SEQUENCE OF DEMOLITION AND CONSTRUCTION.
- J. COORDINATE WITH THE CITY PRIOR TO SHUT-DOWN OR REMOVAL OF EQUIPMENT.
- K. UPDATE PANEL DIRECTORIES FOR ALL EXISTING PANELS AND CDP'S AFFECTED BY THE SCOPE OF WORK (DEMOLITION AND NEW CONSTRUCTION).
- L. EMPLOY ROOFING SUB-CONTRACTOR TO SEAL AROUND ALL NEW PENETRATIONS THROUGH ROOF.
- M. COORDINATE FINAL LOCATION OF ALL EQUIPMENT IN MECH. ROOM 004 WITH MECHANICAL SUB-CONTRACTOR PRIOR TO ROUGH-IN.
- N. ELECTRICAL SUB-CONTRACTOR TO PROVIDE CORE DRILLING FOR ALL REQUIRED PENETRATIONS. X-RAY SCAN PRIOR TO CORING. DO NOT CUT REBAR. PROVIDE FIRE STOPPING FOR PENETRATIONS THROUGH FIRE RATED WALLS.
- O. ALL ABANDONED EQUIPMENT AND SERVICES WITHIN AREA OF WORK SHALL BE REMOVED.

**KEYNOTES**

1. PROVIDE NEW EQUIPMENT ON 4" HOUSEKEEPING PAD.
2. PROVIDE NEW PEDESTAL MOUNTED CLASS A GFCI 5-20R RECEPTACLE. INSTALL PER CEC RULE 26-704.
3. PROVIDE 120V POWER SOURCE FOR GAS DETECTION CONTROLLER.
4. GAS DETECTION EQUIPMENT BY CONTROLS SUB-CONTRACTOR. PROVIDE FIRE ALARM MONITORING MODULE FOR CONNECTION TO FIRE ALARM SYSTEM AS REQUIRED BY MANITOBA BUILDING CODE. PROVIDE TESTING AND RE-VERIFICATION OF FIRE ALARM SYSTEM UPON COMPLETION.
5. EXISTING EQUIPMENT TO BE RE-FED FROM NEW DISTRIBUTION AS SHOWN ON SINGLE LINE DRAWING E3.1.
6. PROVIDE TYCO EC-TS THERMOSTAT ON WALL FOR HEAT TRACE CONTROL. INSTALL THERMOSTAT PROBE AT HIGH LEVEL ON BOILER CONDENSATE VENT PIPE. REFER TO KEYNOTE 7 FOR HEAT TRACE INSTALLATION.
7. PROVIDE RAYCHEM 5X11-CT HEAT TRACE FROM EACH BOILER CONDENSATE BASE TEE TO COMMON CONDENSATE PIPE RUNNING TO FLOOR DRAIN. COORDINATE WITH MECHANICAL SUB-CONTRACTOR FOR REQUIRED LENGTH. REFER TO EQUIPMENT SCHEDULE FOR OTHER REQUIRED HEAT TRACE SYSTEM COMPONENTS. INSTALL TO MANUFACTURER'S RECOMMENDATIONS.
8. CONNECT TO NEW 20A-1P BREAKER IN PANEL LP-GM WITH 2#10 AWG WIRING.
9. CONNECT TO NEW 20A-1P BREAKER IN PANEL LP-GL WITH 2#10 AWG WIRING.
10. PROVIDE EMERGENCY BOILER SHUTDOWN SWITCH NEAR DOOR. SWITCH TO BE INTERLOCKED WITH BOILERS SO THAT BOTH BOILERS SHUTDOWN IMMEDIATELY UPON USE OF SWITCH.
11. PROVIDE DEDICATED 5-15R RECEPTACLE FOR NEW GLYCOL FILL TANK.
12. PROVIDE 120V POWER FOR BOILER CONTROL PANEL AS SHOWN.
13. PROVIDE NEW PANEL LP-GT TO REPLACE EXISTING PANEL IN FUEL STORAGE ROOM 006. CONNECT TO NEW 75KVA TRANSFORMER TR-LP-GT AND RE-FEED EXISTING LOADS FROM NEW PANEL. PROVIDE NEMA 4X ENCLOSURE C/W TERMINAL BLOCKS FOR EXTENDING WIRING AT PREVIOUS PANEL LOCATION.
14. INFILL DOOR. REFER TO MECHANICAL.
15. MOUNT AT HIGH LEVEL.
16. REPLACE MAIN BREAKER WITH REFURBISHED BREAKER. PROVIDED BY THE CITY. INSTALL NEW BREAKERS TO FEED NEW CDP YY AND MCC XX. REFER TO E3.1 FOR DETAILS.
17. PROVIDE TEMPORARY GENSET POWER FOR THE SITE DURING SHUT-DOWN OF MAIN DISTRIBUTION. REFER TO SPECIFICATION SECTION 26555 FOR DETAILS.



**KEY PLAN**

6			
5			
4			
3			
2			
1			
0	ISSUED FOR CONSTRUCTION	vk	27/10/15
NO.	Description		BY DD/MM/YY

**APGM**  
 Certificate of Authorization  
**SMB Engineering Ltd.**  
 No. 166 Expiry April 30, 2016

**PROVINCE OF MANITOBA**  
 2315 OCT 24  
 V.E.  
**KANE**  
 Member  
 30363  
 REGISTERED PROFESSIONAL ENGINEER

770 Bradford Street  
 Winnipeg, Canada  
 T 204 775 0291  
 SMS  
 ENGINEERING  
 SMSeng.com

**Winnipeg Transit**

Project Title  
**CITY OF WINNIPEG FORT ROUGE  
 TRANSIT BASE - SERVICE BAY AND  
 B-SECTION VENTILATION UPGRADE**

WINNIPEG MANITOBA

Drawing Title  
**MAIN FLOOR AND ROOF PLAN  
 - NEW CONSTRUCTION -  
 ELECTRICAL**

Drawn By WPD	Checked By vk	Approved By vk
Scale N.T.S.	Date JULY 2014	Project No. 14-194-01
Revision Number 0	Drawing Number E2.1	Sheet Order 2 OF 3