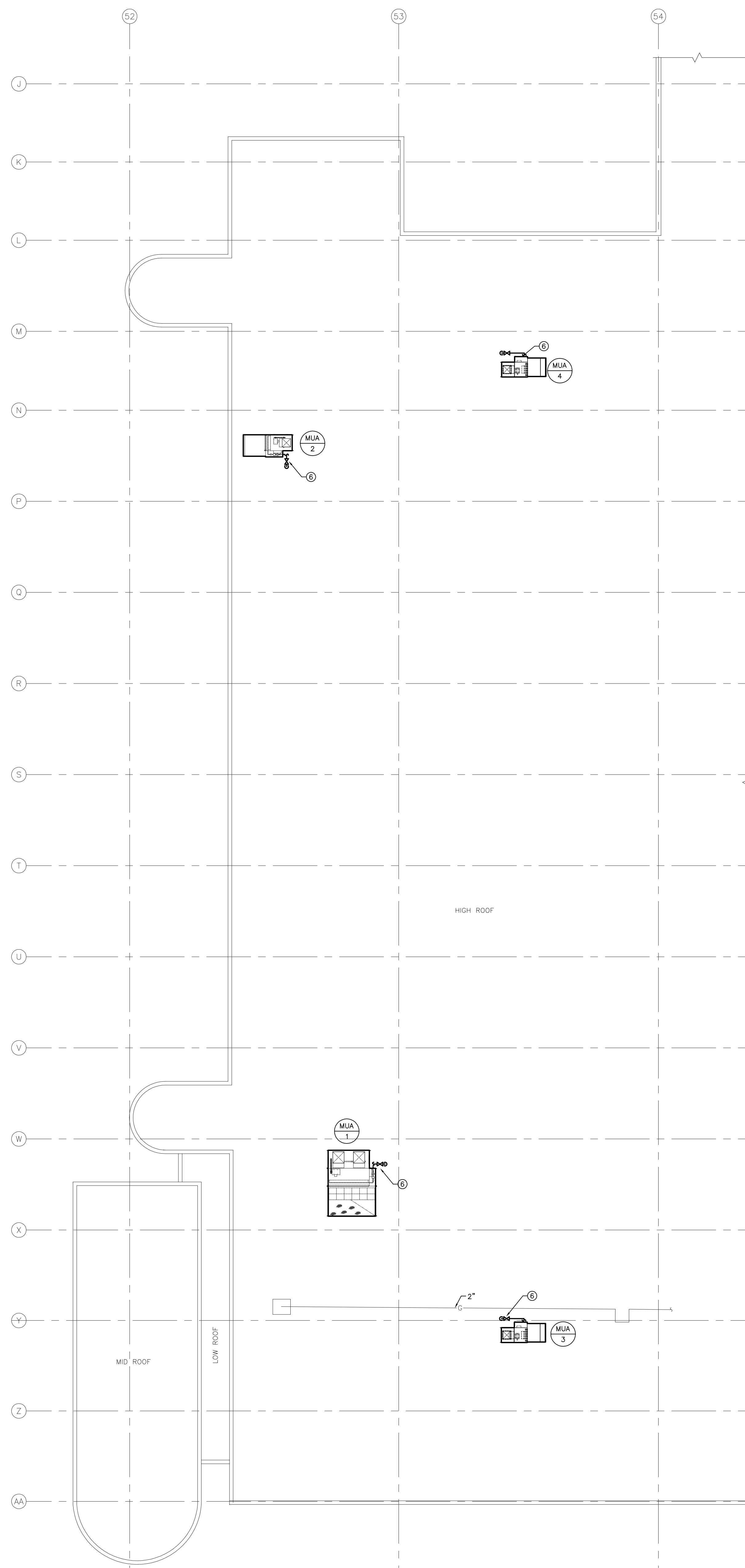


1 MAIN FLOOR PLAN - NEW CONSTRUCTION - PLUMBING
SCALE: 1/16" = 1'-0"



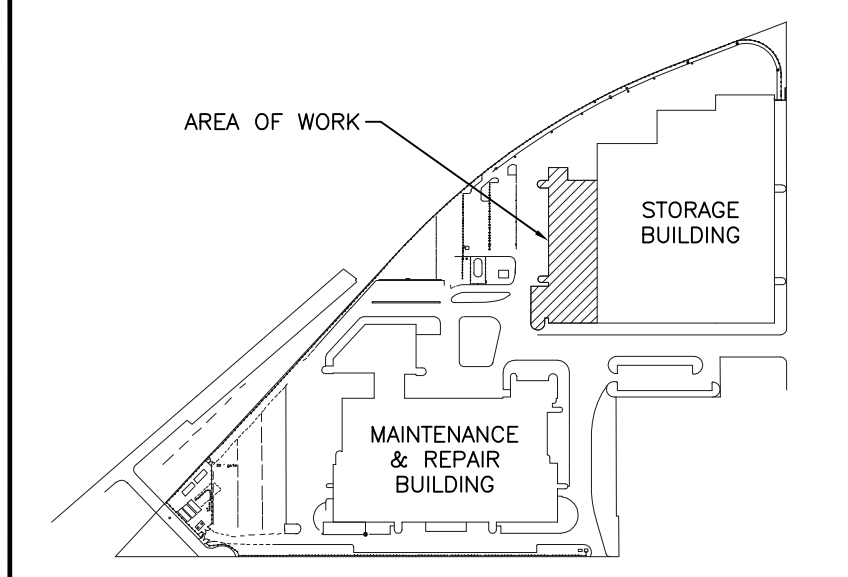
2 ROOF PLAN - NEW CONSTRUCTION - PLUMBING
SCALE: 1/16" = 1'-0"

GENERAL NOTES

- A. REFER TO SCOPE OF WORK DESCRIPTION IN FRONT END SPECIFICATIONS FOR SEQUENCING.
- B. ALL ABANDONED EQUIPMENT AND SERVICES WITHIN AREA OF WORK SHALL BE REMOVED.
- C. THIS BUILDING MAY CONTAIN ASBESTOS. REFER TO FRONT END SPECIFICATIONS FOR FURTHER INFORMATION.

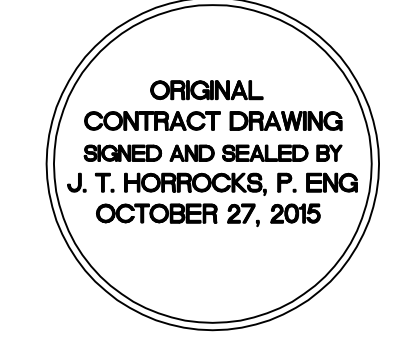
KEYNOTES

- 1. CONNECT TO EXISTING 3" GAS VALVE WITH BLIND FLANGE FOR NEW BOILERS.
- 2. CONNECT TO NEW BOILERS, B-1 AND B-2.
- 3. DRAIN FROM BASE TEE C/W ACID NEUTRALIZER TO FFD. DRAIN TO BE HEAT TRACED (REFER TO ELECTRICAL).
- 4. VALVED AND CAPPED NATURAL GAS LINE FOR FUTURE BOILER.
- 5. RECONNECT EXISTING NATURAL GAS LINE C/W ISOLATION VALVE AND PRV FOR EXISTING INFRARED HEATERS.
- 6. PROVIDE NEW BRANCH NATURAL GAS PIPING OFF OF EXISTING MAIN TO NEW MUAS.
- 7. NEW FUNNEL FLOOR DRAIN CONNECTED TO EXISTING SANITARY. CONTRACTOR TO CONFIRM FINAL LOCATION ON SITE.



KEY PLAN
NTS

5			
4			
3			
2			
1	ISSUED FOR ADDENDUM 2	JH	20/11/15
0	ISSUED FOR CONSTRUCTION	JH	27/10/15
NO.	Description	BY	DD/MM/YY



Winnipeg Transit
 Project Title
**CITY OF WINNIPEG FORT ROUGE
 TRANSIT BASE - SERVICE BAY AND
 B-SECTION VENTILATION UPGRADE**
 WINNIPEG MANITOBA

Drawing Title
**MAIN FLOOR AND ROOF PLAN -
 NEW CONSTRUCTION -
 PLUMBING**

Drawn By	GB/IE	Checked By	JH	Approved By	JH
Scale	AS SHOWN	Date	JULY 2014	Project No.	14-194-01
Revision Number	1	Drawing Number	M2.1	Sheet Order	4 OF 11

14194_M2_1_P1_L1016 - NOVEMBER 20, 2015 - 2:27PM CST - BRML