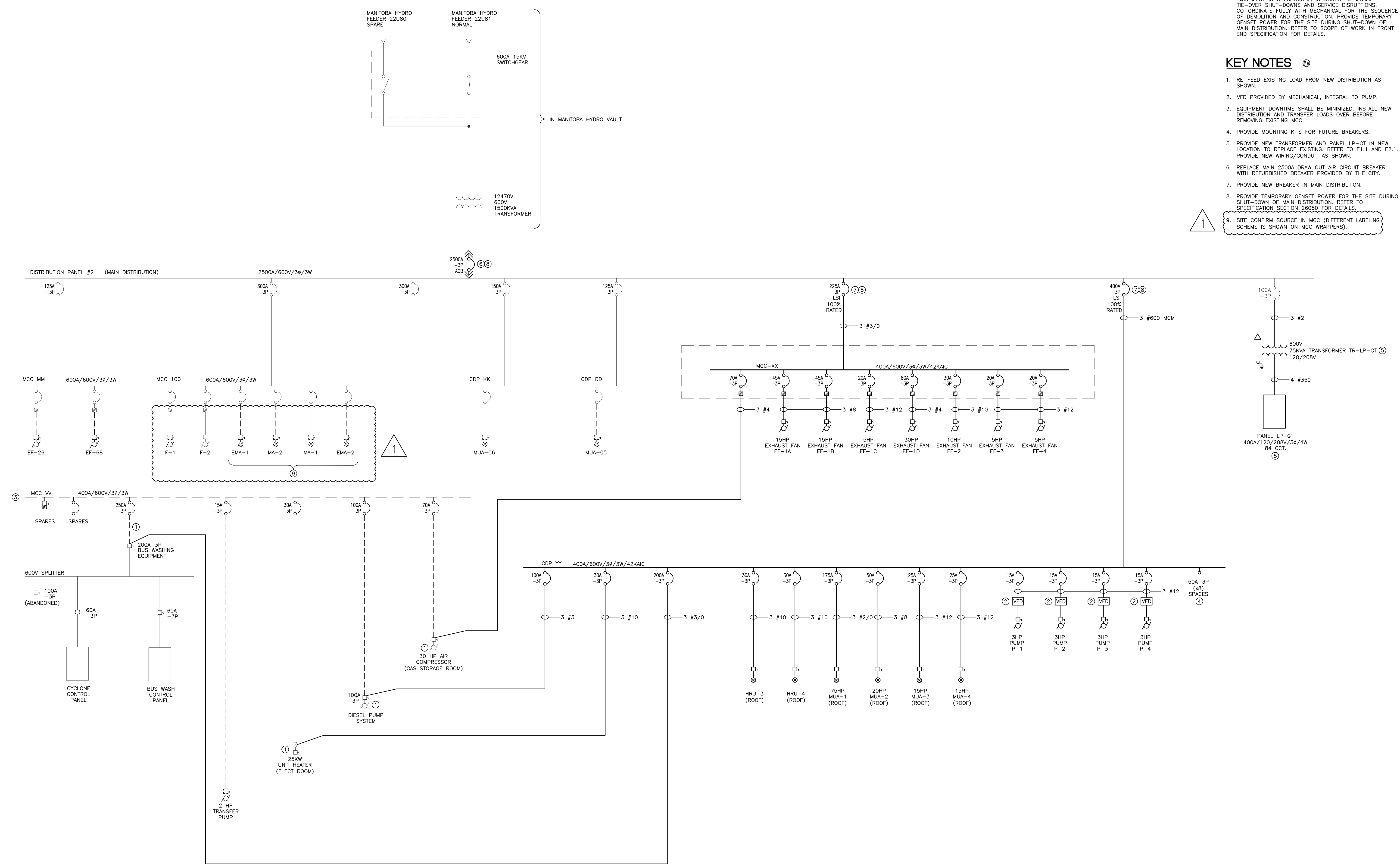


14194_E3-1_LOC_LONG - NOVEMBER 20, 2015 - 4:37PM CST - INAPPROY

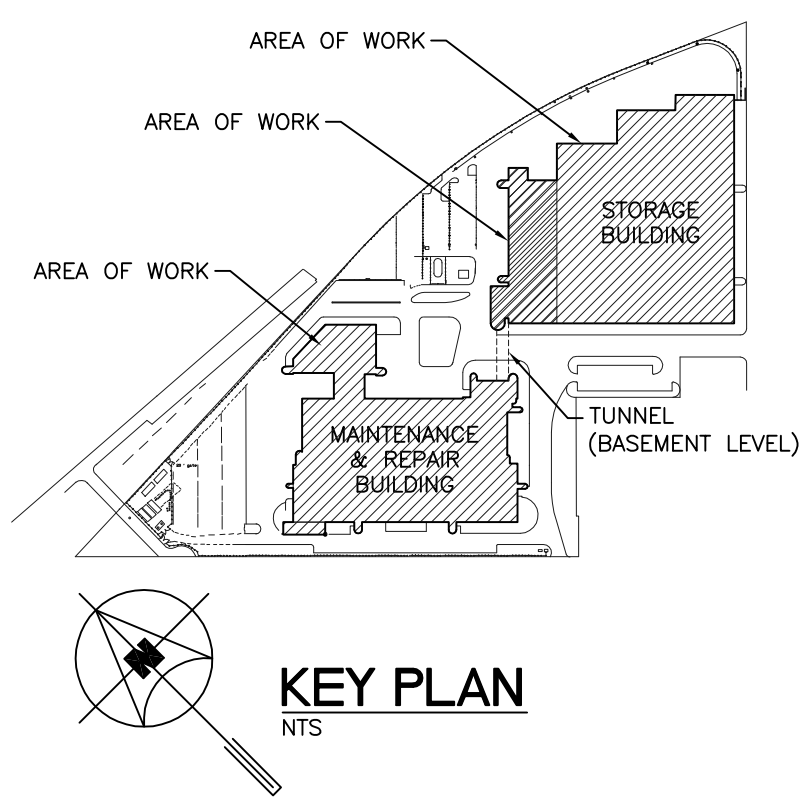


GENERAL NOTES

- A. ALL WIRING INDOORS TO BE RW90 COPPER IN EMT CONDUIT UNLESS OTHERWISE NOTED.
- B. PROVIDE BOND CONDUCTOR IN ALL CONDUIT RUNS.
- C. ALL ABANDONED EQUIPMENT AND SERVICES WITHIN AREA OF WORK SHALL BE REMOVED.
- D. THIS BUILDING MAY CONTAIN ASBESTOS. REFER TO FRONT END SPECIFICATIONS FOR FURTHER INFORMATION.
- E. INSTALL NEW ELECTRICAL EQUIPMENT WHILE EXISTING EQUIPMENT IS OPERATIONAL IN ORDER TO MINIMIZE TIE-OVER SHUT-DOWNS AND SERVICE DISRUPTIONS. CO-ORDINATE FULLY WITH MECHANICAL FOR THE SEQUENCE OF DEMOLITION AND CONSTRUCTION. PROVIDE TEMPORARY GENSET POWER FOR THE SITE DURING SHUT-DOWN OF MAIN DISTRIBUTION. REFER TO SCOPE OF WORK IN FRONT END SPECIFICATION FOR DETAILS.

KEY NOTES

1. RE-FEED EXISTING LOAD FROM NEW DISTRIBUTION AS SHOWN.
2. VFD PROVIDED BY MECHANICAL, INTEGRAL TO PUMP.
3. EQUIPMENT DOWNTIME SHALL BE MINIMIZED. INSTALL NEW DISTRIBUTION AND TRANSFER LOADS OVER BEFORE REMOVING EXISTING MCC.
4. PROVIDE MOUNTING KITS FOR FUTURE BREAKERS.
5. PROVIDE NEW TRANSFORMER AND PANEL LP-GT IN NEW LOCATION TO REPLACE EXISTING. REFER TO E1.1 AND E2.1. PROVIDE NEW WIRING/CONDUIT AS SHOWN.
6. REPLACE MAIN 2500A DRAW OUT AIR CIRCUIT BREAKER WITH REFURBISHED BREAKER PROVIDED BY THE CITY.
7. PROVIDE NEW BREAKER IN MAIN DISTRIBUTION.
8. PROVIDE TEMPORARY GENSET POWER FOR THE SITE DURING SHUT-DOWN OF MAIN DISTRIBUTION. REFER TO SPECIFICATION SECTION 26050 FOR DETAILS.
9. SITE CONFIRM SOURCE IN MCC (DIFFERENT LABELING SCHEME IS SHOWN ON MCC WRAPPERS).



NO.	Description	BY	DD/MM/YY
5			
4			
3			
2			
1	ISSUED FOR ADDENDUM 2	vk	20/11/15
0	ISSUED FOR CONSTRUCTION	vk	27/10/15

APEGM
Certificate of Authorization
SMB Engineering Ltd.
No. 106 Expiry: April 30, 2016

ORIGINAL CONTRACT DRAWING
BONDED AND SEALED BY
V.E. KANE, P. ENG
OCTOBER 27, 2015

770 Bradford Street
Winnipeg, Canada
T 204 775 0251
SMSeng.com

SMS ENGINEERING

Winnipeg Transit

Project Title
CITY OF WINNIPEG FORT ROUGE TRANSIT BASE - SERVICE BAY AND B-SECTION VENTILATION UPGRADE

WINNIPEG MANITOBA

Drawing Title
PARTIAL SINGLE LINE DIAGRAM

Drawn By WPD	Checked By vk	Approved By vk
Scale N.T.S	Date NOVEMBER 2015	Project No 14-194-01
Revision Number 1	Drawing Number E3.1	Sheet Order 3 OF 3