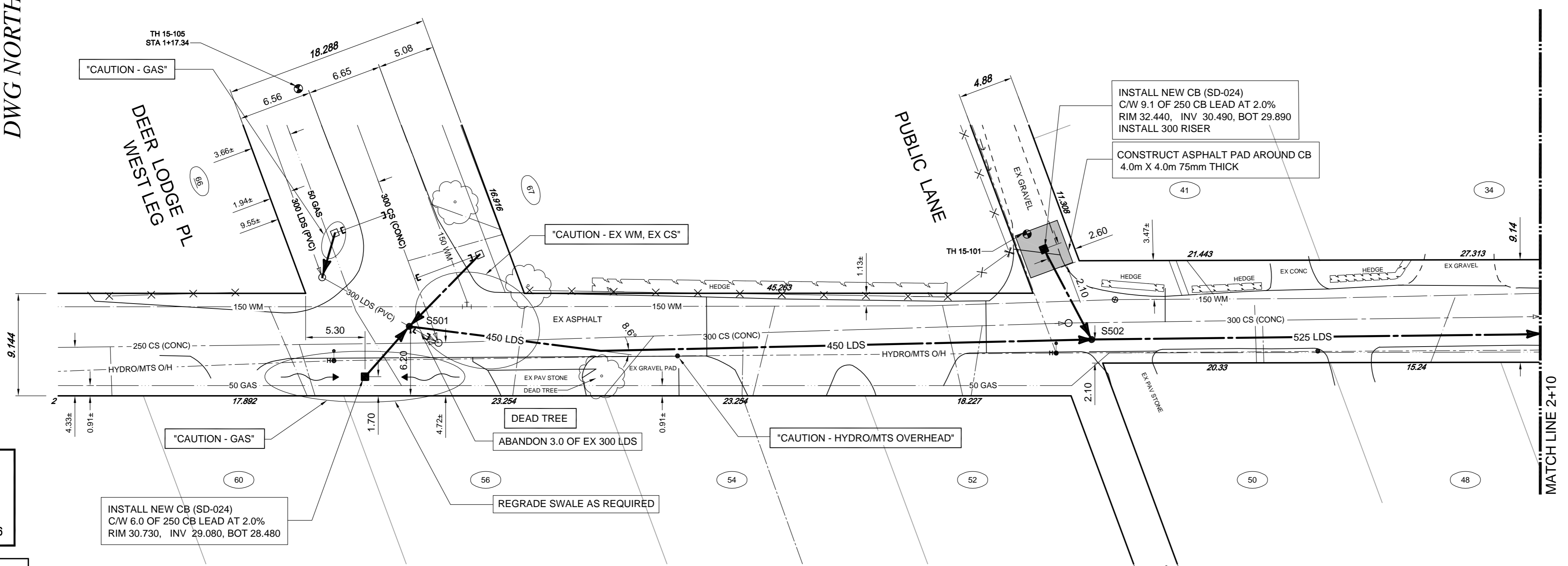
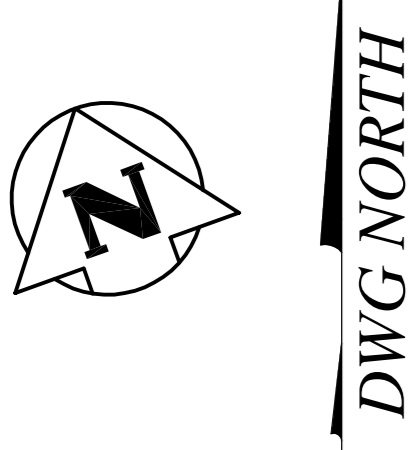


NOTE:
EXACT DEPTH OF EXISTING
150 WATERMAIN UNKNOWN.

- CONSTRUCTION NOTES:**
1. LOCATION OF ALL SEWER AND WATER LINES TO BE CONFIRMED IN THE FIELD.
 2. SEWER AND WATER SERVICES SHOWN ON DRAWINGS ARE APPROXIMATE ONLY.
 3. INSTALL NEW SEWER AND CATCHBASIN LEADS BY TRENCHLESS METHODS, UNLESS NOTED OTHERWISE.
 4. INSTALL TYPE 'B' RISERS ON CATCHBASIN LEADS AS DIRECTED BY THE CONSULTANT.
- GENERAL NOTES:**
1. CHAINAGE IS ALONG NORTH LIMIT OF DEER LODGE PLACE SOUTH LEGS.
 2. STATION 1+00 = WEST LIMIT OF DEER LODGE PLACE WEST LEG AND NORTH LIMIT OF DEER LODGE PLACE SOUTH LEG.
 3. SEE SPECIFICATIONS FOR DETAILED TEST HOLE INFORMATION.



DEER LODGE PLACE (SOUTH LEG)

APEGM
Certificate of Authorization
TETRA TECH WEI Inc.
No. 5313 Date: April 30, 2016

WARNING
IF POWER EQUIPMENT OR EXPLOSIVES ARE TO BE USED FOR EXCAVATION ON THIS PROJECT THE CONTRACTOR MUST:
1. NOTIFY THE GAS COMPANY OF THE PROPOSED LOCATION OF EXCAVATION.
2. TAKE PRECAUTION TO AVOID DAMAGE TO GAS COMPANY INSTALLATIONS. SEE PROVINCIAL REGULATION 140/92 FOR DETAILS.

EXISTING	LEGEND-PLAN	PROPOSED	EXISTING	LEGEND-PLAN	PROPOSED	EXISTING	LEGEND-PLAN	PROPOSED
150 WM	WATERMAIN	150 WM	45	BEND	45	ANCHOR	ANCHOR	ANCHOR
400 FM	FEEDERMAIN	400 FM	46	TEE	46	TREE	TREE	TREE
300 LDS	LAND DRAINAGE SEWER	300 LDS	47	CURB STOP	47	LEGAL DIMENSION	LEGAL DIMENSION	LEGAL DIMENSION
250 WWS	WASTEWATER SEWER	250 WWS	48	PLUG	48	SURVEY BAR	SURVEY BAR	SURVEY BAR
300 CS	COMBINED SEWER	300 CS	49	MANHOLE	49	TRAFFIC SIGNAL	TRAFFIC SIGNAL	TRAFFIC SIGNAL
200 FCM	FORCEMAIN	200 FCM	50	CATCHBASIN	50	GAS	GAS	GAS
+	JUNCTIONS	+	51	CURB INLET	51	HYDRO	HYDRO	HYDRO
+	HYDRANT	+	52	ADDRESS	52	MTS	MTS	MTS
+	VALVE	+	53	HYDRO POLE	53	SIDEWALK	SIDEWALK	SIDEWALK
+	REDUCER	+	54	LIGHT STANDARD	54	CURB	CURB	CURB

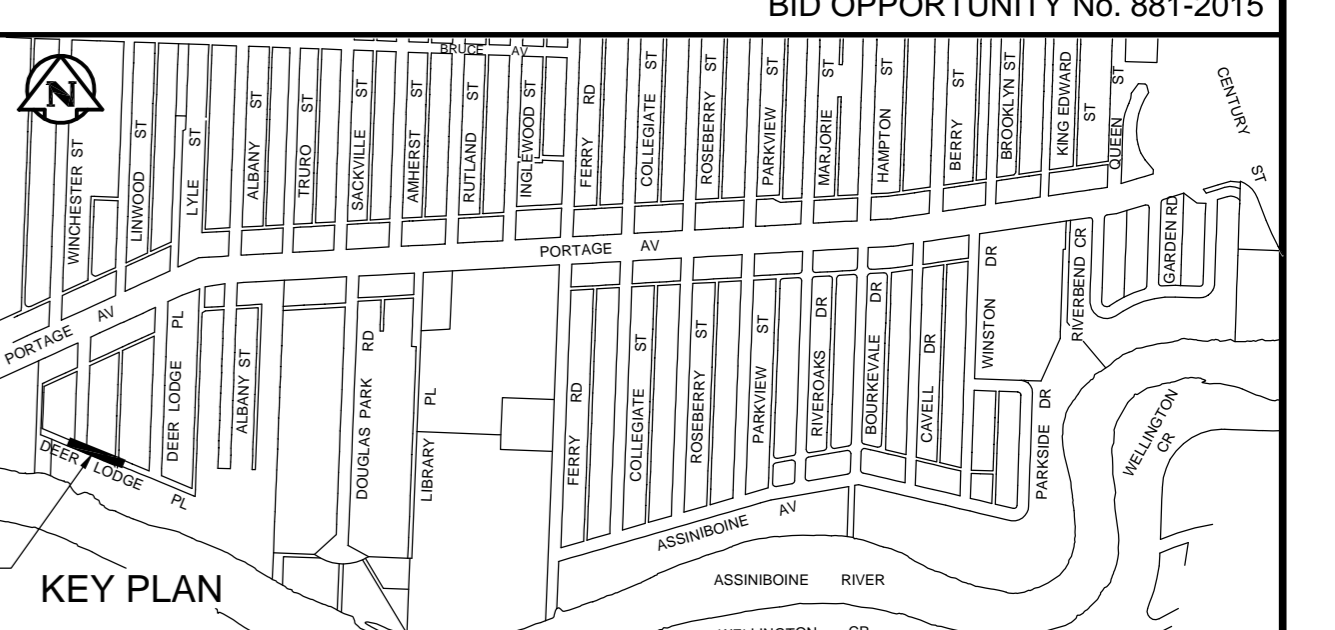
LOCATION APPROVED UNDERGROUND STRUCTURES
SUPV. U/G STRUCTURES COMMITTEE DATE
NOTE:
LOCATION OF UNDERGROUND STRUCTURES AS SHOWN ARE BASED ON THE BEST INFORMATION AVAILABLE. BUT NO GUARANTEE IS GIVEN THAT ALL EXISTING UTILITIES ARE SHOWN OR THAT THE GIVEN LOCATIONS ARE EXACT. CONFIRMATION OF EXISTENCE AND EXACT LOCATION OF ALL SERVICES MUST BE OBTAINED FROM THE INDIVIDUAL UTILITIES BEFORE PROCEEDING WITH CONSTRUCTION.

NO.	REVISIONS	DATE	BY
01	ISSUED FOR TENDER	2015.10.19	KJM
00	ISSUED FOR APPROVAL	2015.10.19	KJM

TETRA TECH

DESIGNED BY: KJM
CHECKED BY: KJM
DRAWN BY: NL, GMD
APPROVED BY: GS
HOR. SCALE: 1:250
VERTICAL: 1:50
DATE: 2015.02.25

PROVINCE OF MANITOBA
K.J. McRAE
REGISTERED PROFESSIONAL ENGINEER
CONSULTANT DRAWING NO. 1000120300-DWG-C0501



THE CITY OF WINNIPEG
WATER AND WASTE DEPARTMENT

FERRY ROAD AND RIVERBEND
COMBINED SEWER RELIEF WORKS
CONTRACT 5 WEST
DEER LODGE PLACE (SOUTH LEG)
DEER LODGE PLACE (WEST LEG) TO
8m WEST OF DEER LODGE PLACE (EAST LEG)

CITY DRAWING NUMBER: LD-7503
SHEET 1 OF 10
C0501

BID OPPORTUNITY No. 881-2015