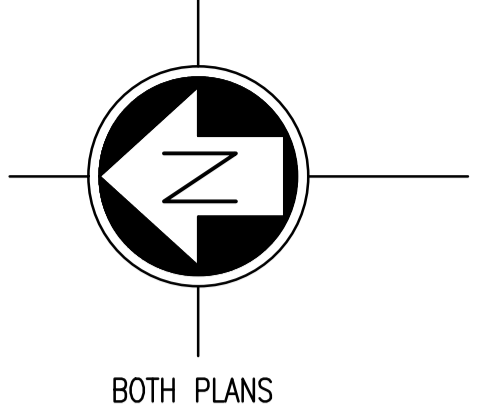
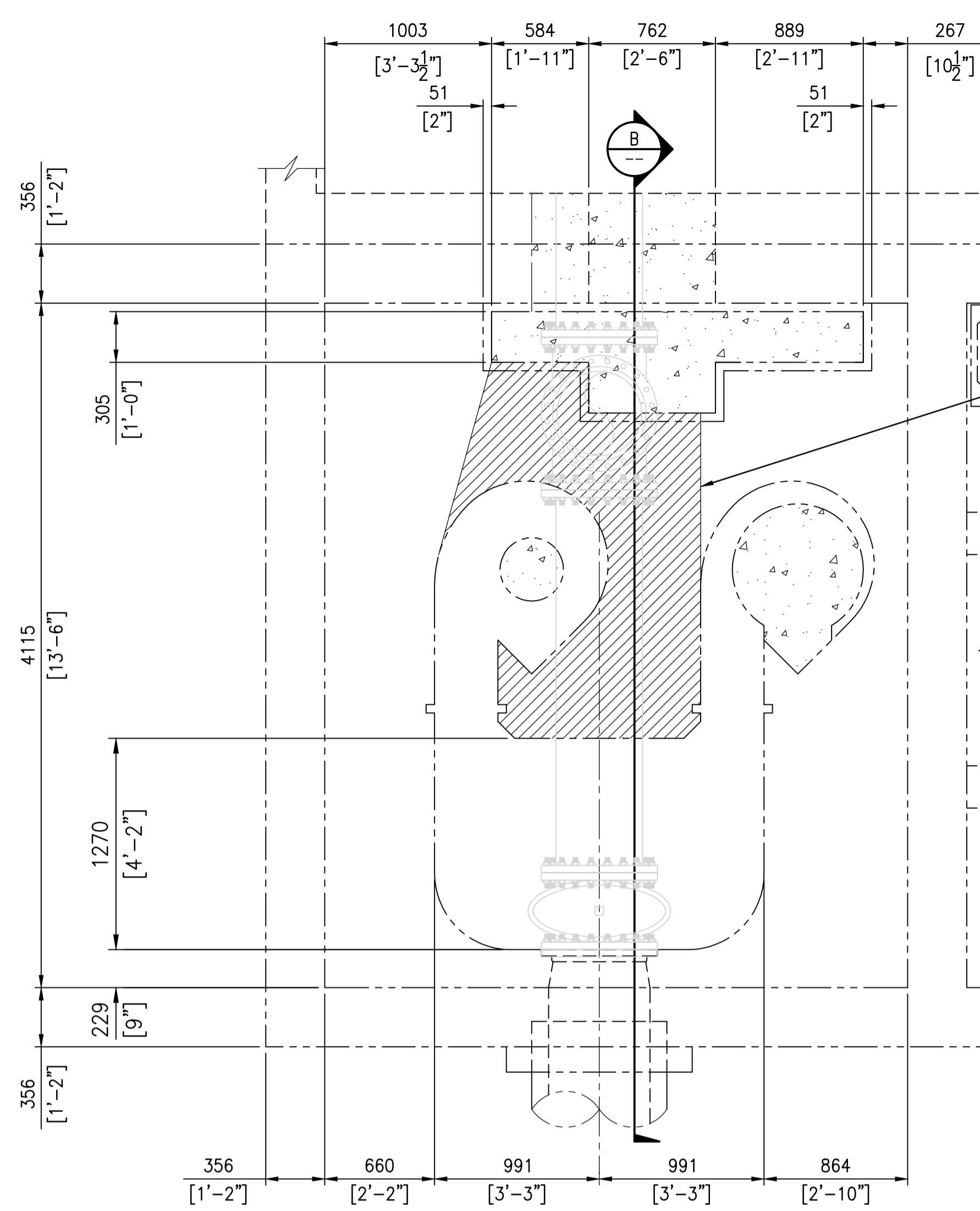


PLAN @ EL. 226.568 (743'-4")  
SCALE: 1 : 25



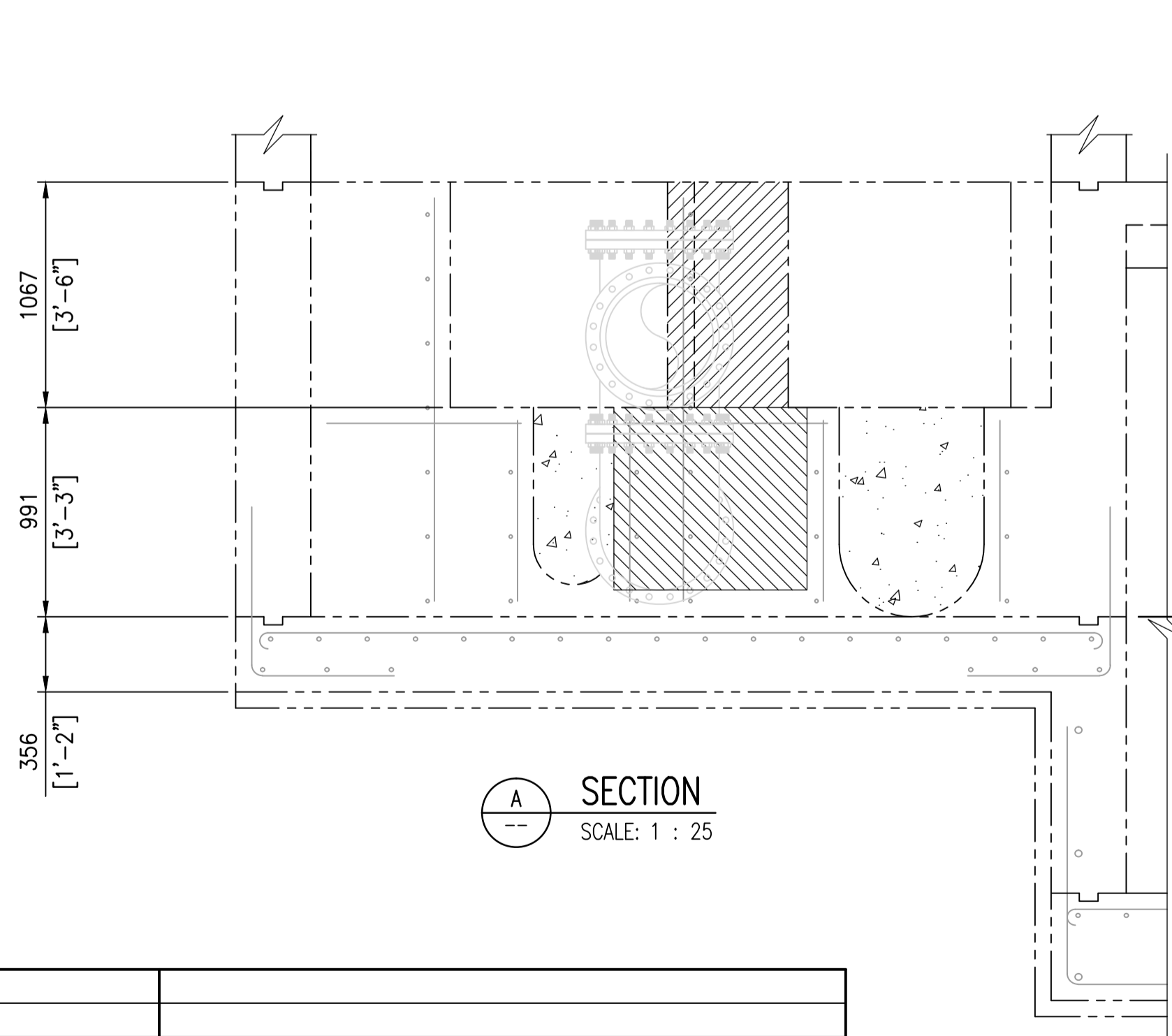
CONC. REMOVAL  
BELOW EL. 226.543  
(743'-3") FOR 90°  
ELBOW & STRAIGHT PIPING  
CLEARANCE  
DEPTH VARIES -  
SEE ELEVATIONS

FILL BOTH  
DOWN SPOUTS WITH  
CONCRETE ONCE  
PIPING IS INSTALLED

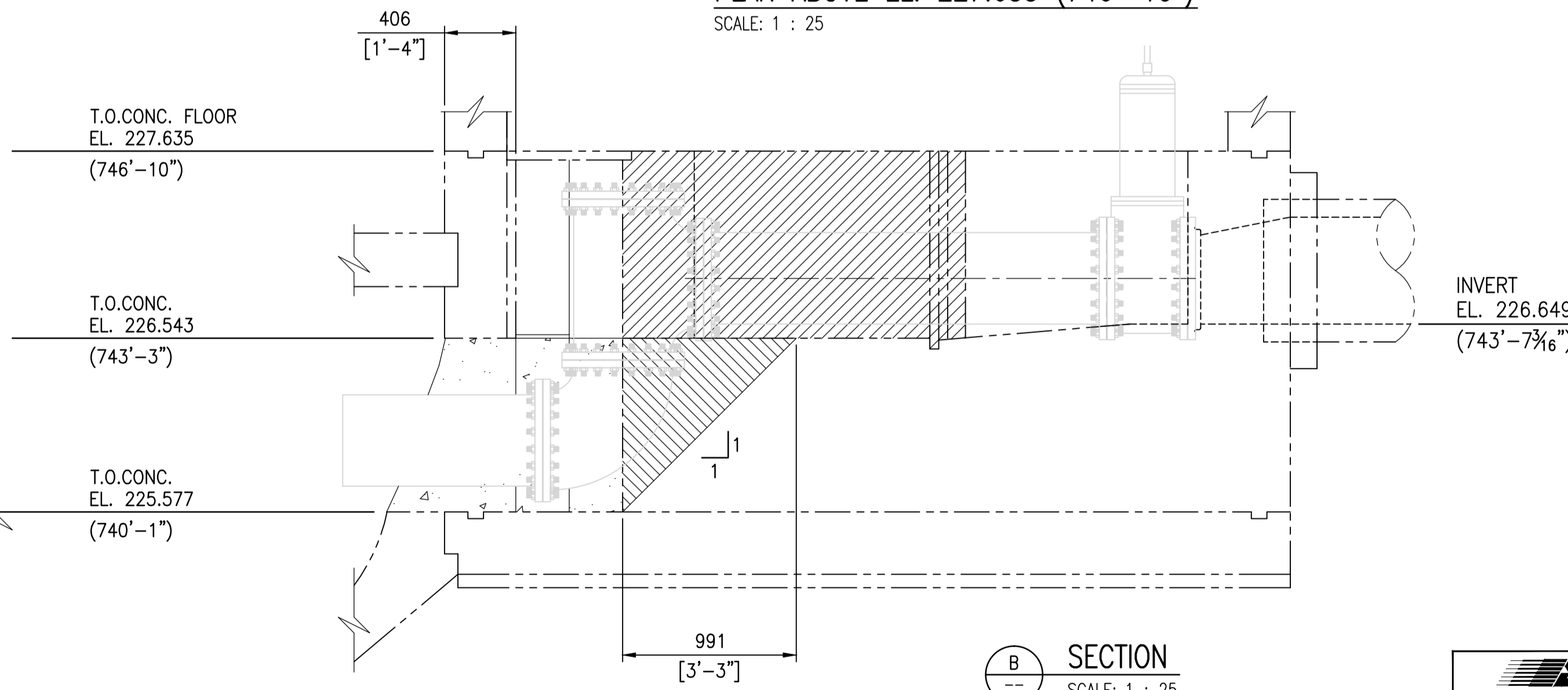


PLAN ABOVE EL. 227.635 (746'-10")  
SCALE: 1 : 25

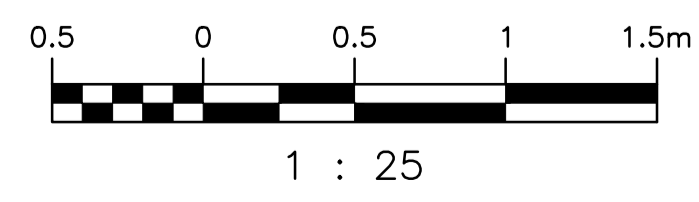
CONC. REMOVAL  
ABOVE EL. 226.543  
(743'-3")



SECTION A  
SCALE: 1 : 25



SECTION B  
SCALE: 1 : 25



**NOTES:**

- SEE DRAWING 1-0169L-S0004 FOR GENERAL NOTES.
- CAST-IN-PLACE CONCRETE:**
  - ALL MATERIALS AND WORKMANSHIP SHALL CONFORM TO CSA STANDARD CAN/CSA-A23.1-M.
  - CONCRETE MIXES SHALL BE PROPORTIONED IN ACCORDANCE WITH CSA A23.1, ALTERNATIVE 1, TO GIVE THE FOLLOWING PROPERTIES:
    - MINIMUM 28 DAY COMPRESSIVE STRENGTH - 35 MPA
    - CEMENT TYPE:
      - BEAMS AT TOP OF INLET STRUCTURE ROOF AND DRYWELL ISOLATION WALLS - TYPE GU
      - INSIDE THE INLET STRUCTURE - TYPE H5b
    - NOMINAL SIZE OF AGGREGATE:
      - BEAMS AT TOP OF INLET STRUCTURE ROOF AND DRYWELL ISOLATION WALLS - 20mm
      - ALL OTHER LOCATIONS - 10mm
    - SLUMP - 100mm
    - ENTRAINED AIR CONTENT - 5 TO 8%
    - MAXIMUM FLYASH SUBSTITUTION TO BE 20% BY WEIGHT.
  - NON-SHRINK, NON-METALLIC CEMENTITIOUS GROUT TO BE SIKA 212R OR MASTERFLOW 928.
  - USE SUITABLE VIBRATION METHOD TO ENSURE PROPER COMPACTION OF CONCRETE.

403-B	AINSLIE COMM. & PUMPING STATION - SUPERSTRUCTURE & DETAILS
403-A	AINSLIE COMM. & PUMPING STATION - REINFORCING DETAILS
403	AINSLIE COMM. & PUMPING STATION
DRAWING NUMBER	REFERENCE DRAWINGS

00	ISSUED FOR TENDER	2015/09/17	KJK
NO.	REVISIONS	DATE	DESIGN/CHECK

<p>SNC-Lavalin Inc. 148 Nature Park Way Winnipeg, MB, Canada R3P 0X7 204-786-8080</p>	
DESIGNED BY:	CHECKED BY:
K. KOTYK	D. COATES
DRAWN BY:	APPROVED BY:
B. DICKSON	I. PARKINSON
SCALE:	ISSUED FOR CONSTRUCTION
1:25	BY:
DATE:	DATE:
2015/09/04	
CONSULTANT NO.: 629179-0000-40DD-0001	

ENGINEER'S SEAL  
**PRELIMINARY**  
NOT TO BE  
USED FOR  
CONSTRUCTION

**THE CITY OF WINNIPEG**  
WATER AND WASTE DEPARTMENT

OLIVE WASTEWATER LIFT STATION  
2015 UPGRADES  
COMMUNOTOR INLET STRUCTURAL MODIFICATIONS  
PLAN AND ELEVATIONS

CITY DRAWING NUMBER	SHEET	REV.	SIZE
1-0169L-S0008	001	00	A1