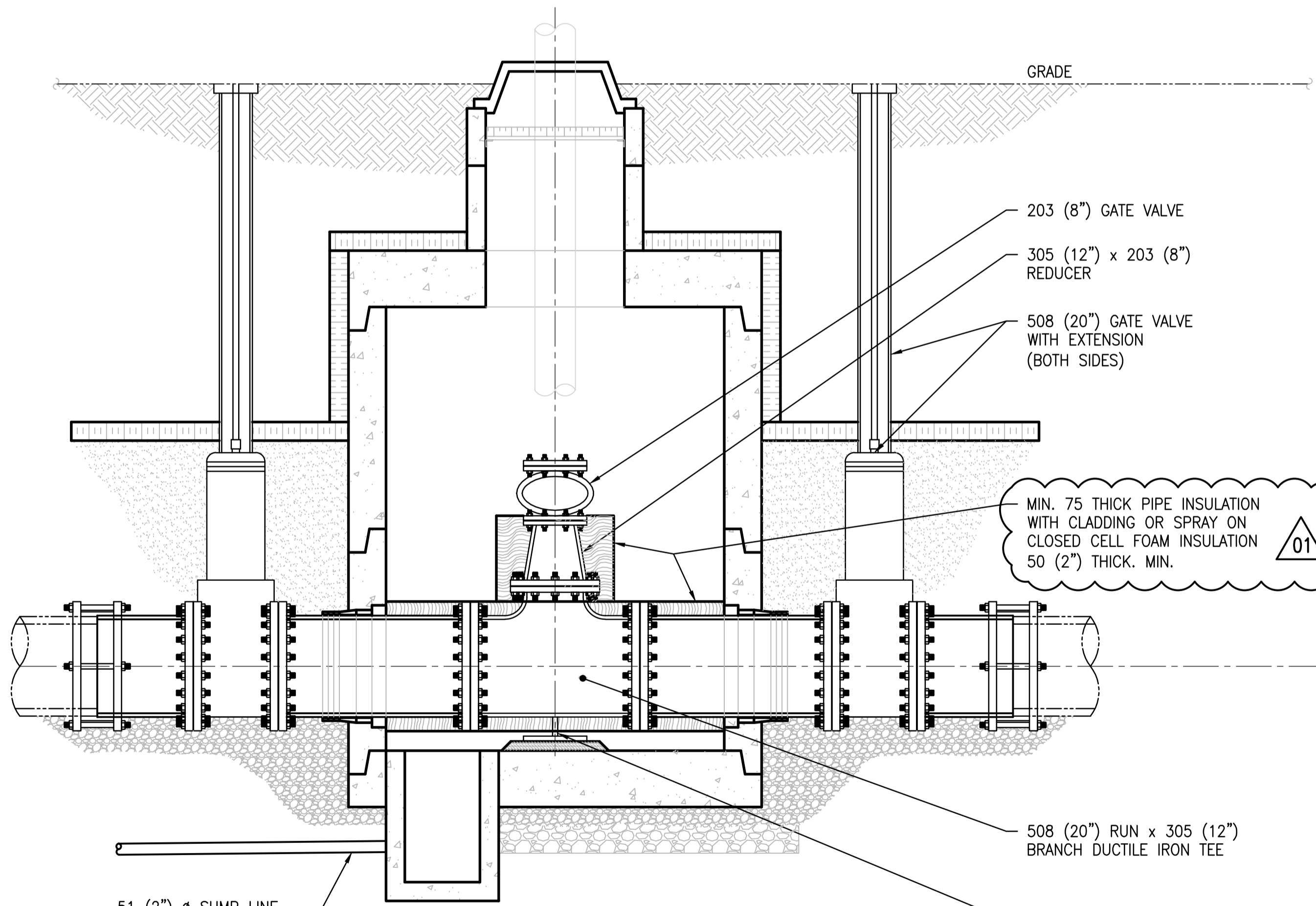
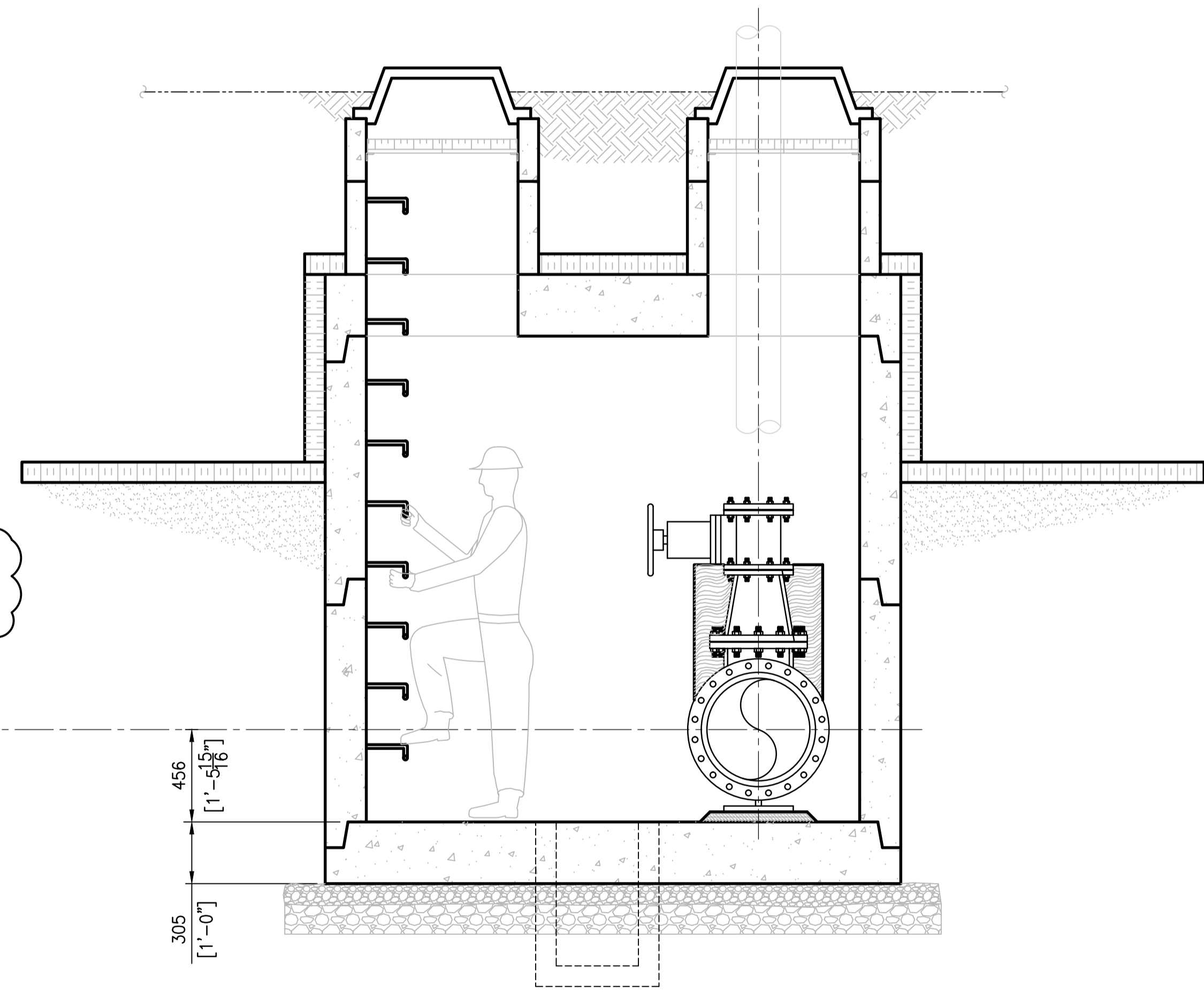


PLAN
SCALE: 1 : 20

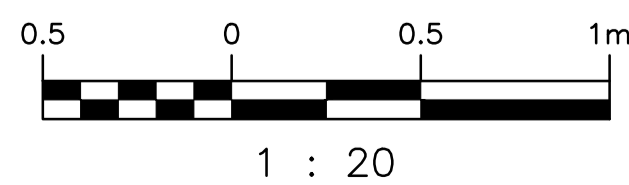


A ELEVATION
SCALE: 1 : 20



B ELEVATION
SCALE: 1 : 20

| DRAWING NUMBER | REFERENCE DRAWINGS |
|----------------|--|
| S-265 | AINSLIE COMM. & PUMPING STATION - SITE PLAN |
| 403-B | AINSLIE COMM. & PUMPING STATION - SUPERSTRUCTURE & DETAILS |
| 403-A | AINSLIE COMM. & PUMPING STATION - REINFORCING DETAILS |
| 403 | AINSLIE COMM. & PUMPING STATION |



| NO. | REVISIONS | DATE | DESIGN | CHECK |
|-----|---------------------------------------|------------|--------|-------|
| 01 | REVISED INSULATION/CONNECTOR NOTE | 2015/10/08 | IP | |
| 00 | ISSUED FOR ADDENDUM - MANHOLE DETAILS | 2015/09/28 | IP | |

| | | | |
|-----------------|--------------|---|--------|
| | | SNC-LAVALIN INC. 148 Nature Park Way Winnipeg, MB, Canada R3P 0X7 204-786-8080 | |
| DESIGNED BY: | I. PARKINSON | CHECKED BY: | J. ALO |
| DRAWN BY: | B. DICKSON | APPROVED BY: | |
| SCALE: | 1:20 | ISSUED FOR CONSTRUCTION | BY: |
| DATE: | 2015/09/28 | DATE: | |
| CONSULTANT NO.: | | | |

ENGINEER'S SEAL
PRELIMINARY
NOT TO BE
USED FOR
CONSTRUCTION

| | |
|---|-----------------|
| THE CITY OF WINNIPEG WATER AND WASTE DEPARTMENT | |
| OLIVE WASTEWATER LIFT STATION 2015 UPGRADES PLAN AND ELEVATION MANHOLE STRUCTURE | |
| CITY DRAWING NUMBER | SHEET REV. SIZE |
| 1-0169L-M0005 | 001 01 A1 |