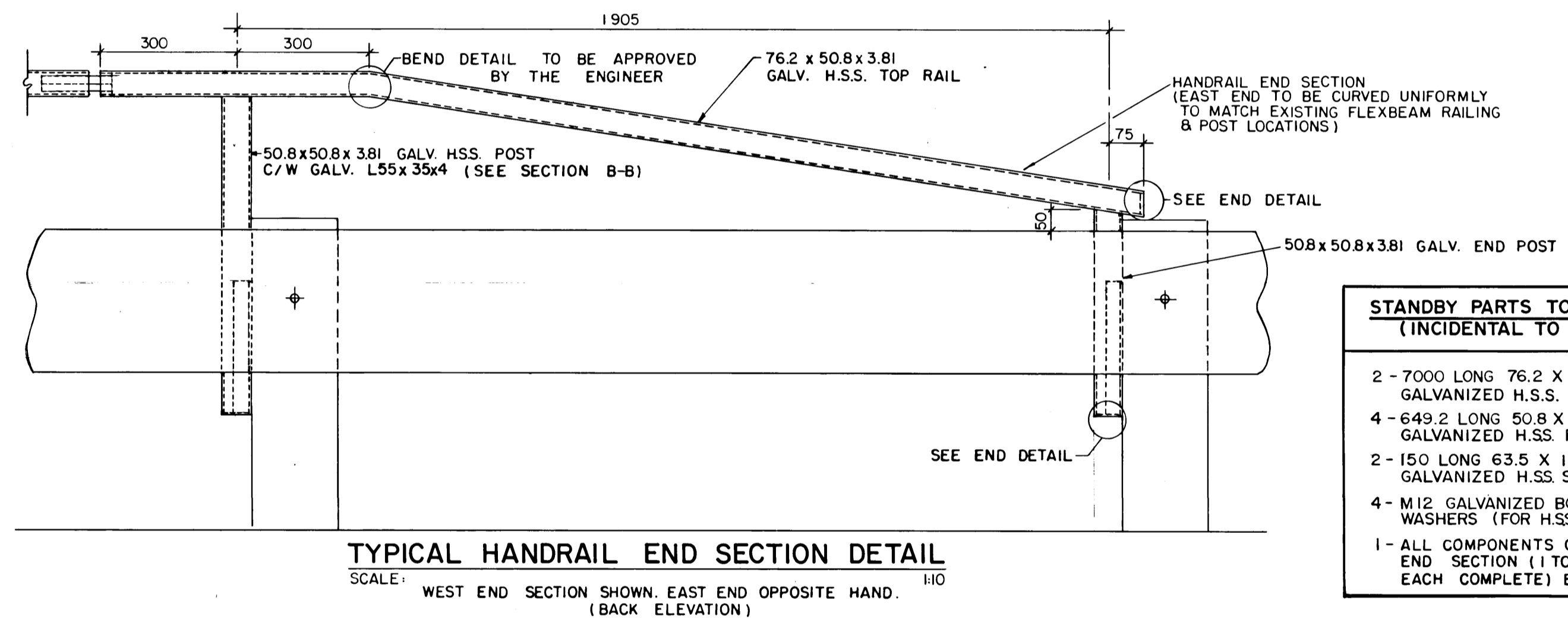
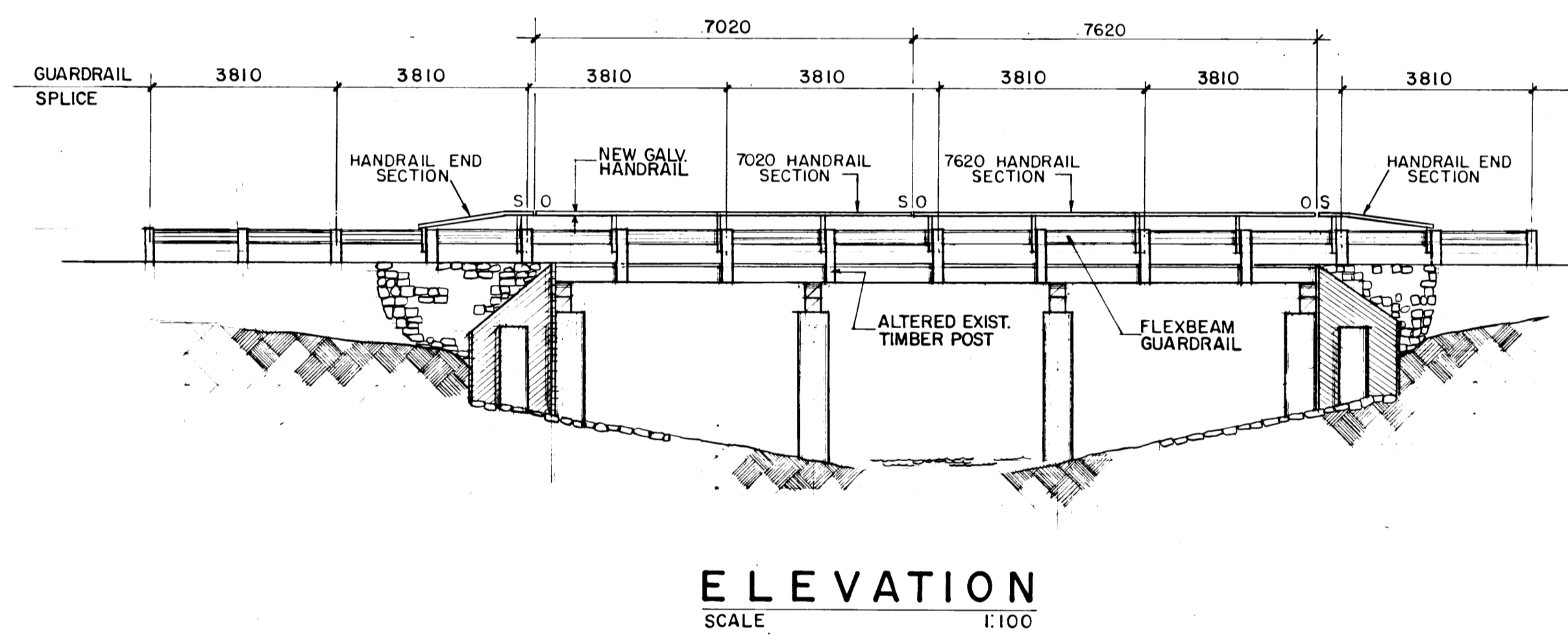
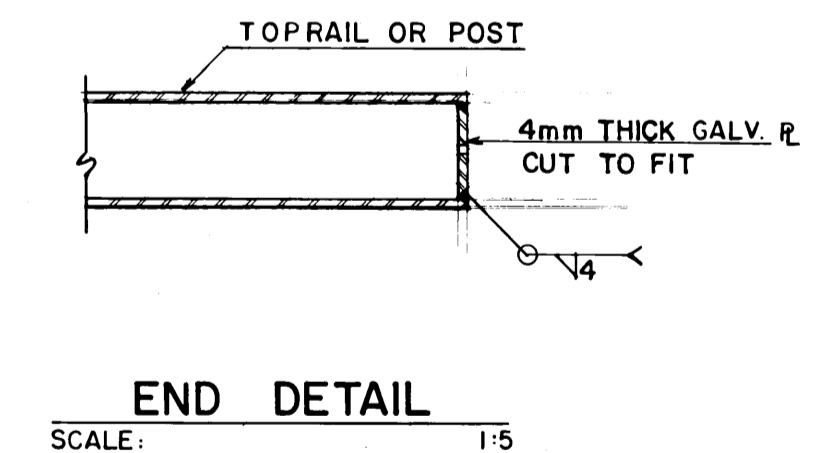
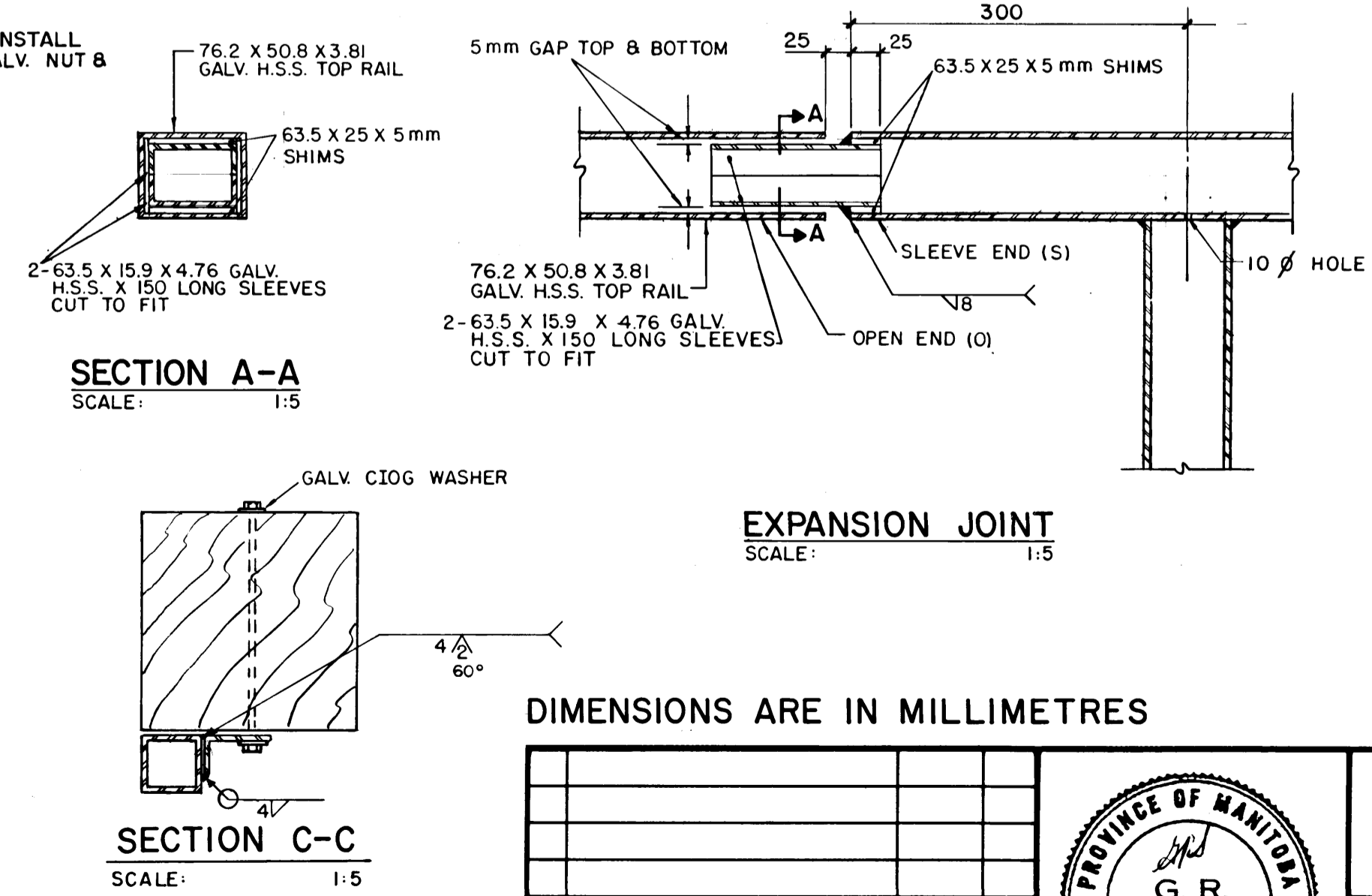
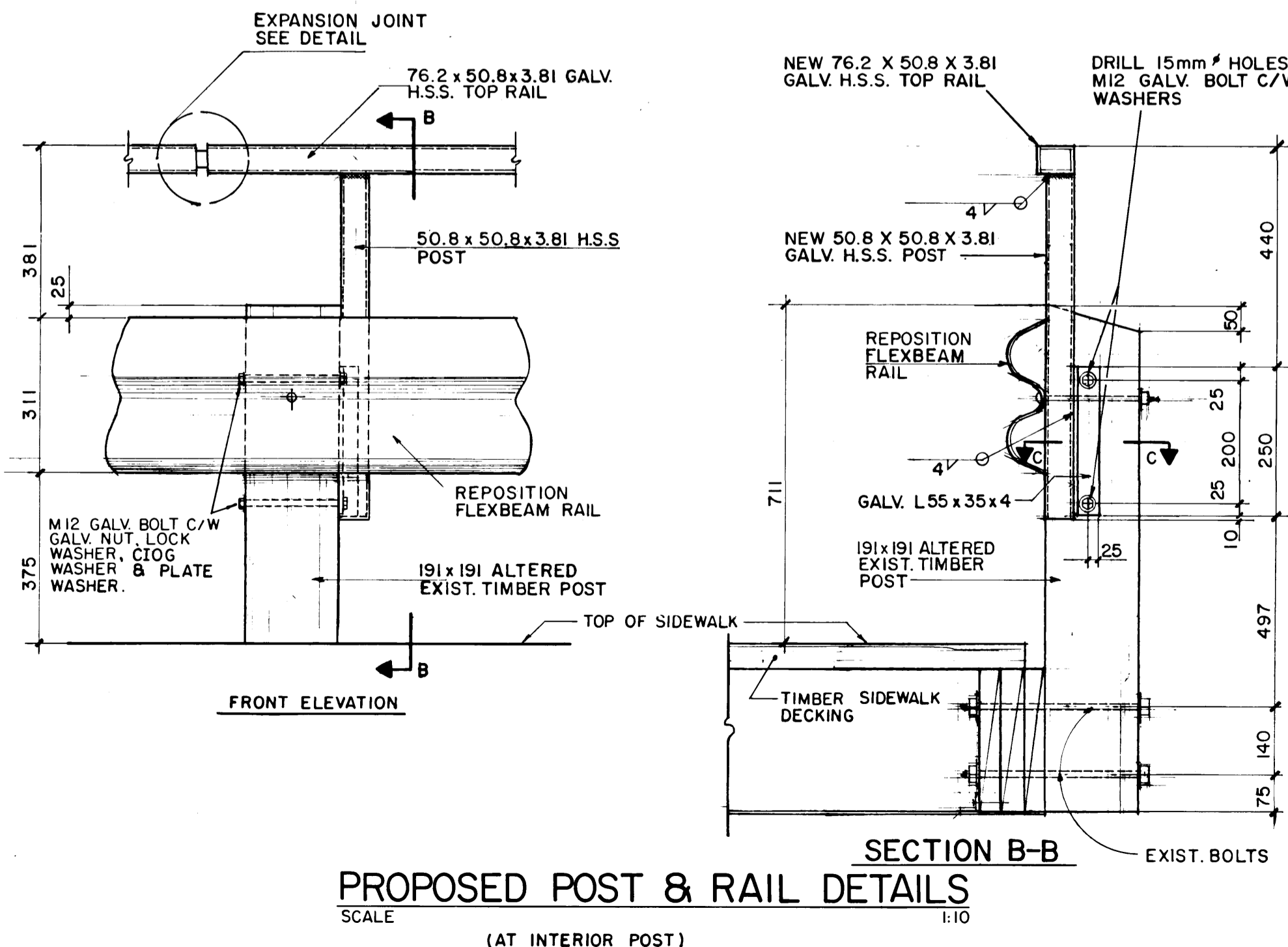


NOTE
ALL DIMENSIONS TO BE MEASURED IN THE FIELD PRIOR TO FABRICATION TO ENSURE EXACT FIT



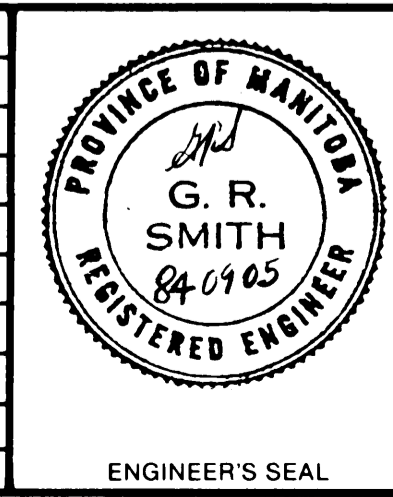
- STANDBY PARTS TO BE SUPPLIED TO CITY (INCIDENTAL TO THESE WORKS)**
- 2 - 7000 LONG 76.2 X 50.8 X 3.81 GALVANIZED H.S.S. TOP RAIL
 - 4 - 649.2 LONG 50.8 X 50.8 X 3.81 H.S.S. GALVANIZED H.S.S. POSTS
 - 2 - 150 LONG 63.5 X 15.9 X 4.76 GALVANIZED H.S.S. SLEEVE
 - 4 - M12 GALVANIZED BOLTS C/W NUT & WASHERS (FOR H.S.S. POSTS)
 - 1 - ALL COMPONENTS OF ONE HANDRAIL END SECTION (1 TOP RAIL & 2 POSTS EACH COMPLETE) BUT UNASSEMBLED.



- NOTE:
- EXISTING HOLES IN TIMBER POSTS TO BE COMPLETELY PLUGGED WITH TIGHTLY FITTING TREATED WOOD DOWELS.
 - TIMBER POSTS TO BE CUT TO SIZE BY CONTRACTOR
 - ALL CUTS AND FIELD DRILLED HOLES IN TIMBER SHALL BE TREATED WITH TWO (2) COATS OF WOOD PRESERVATIVE
 - THE CONTRACTOR IS TO VERIFY ALL DIMENSIONS FOR FABRICATION OF GALVANIZED HANDRAIL
 - THE CONTRACTOR SHALL SUPPLY ALL HARDWARE (BOLTS, NUTS, WASHERS) GALVANIZED FOR COMPLETE INSTALLATION
 - ALL RAILS SHALL BE INSTALLED TO A SMOOTH AND UNIFORM VERTICAL AND HORIZONTAL CURVATURE TO THE SATISFACTION OF THE ENGINEER

DIMENSIONS ARE IN MILLIMETRES

NO.	REVISIONS	DATE	APP.



DESIGNED BY: G.R.S.	DRAWN BY: R.O.
CHECKED BY: L.S.W.L.	DATE: 83-08-05

THE CITY OF WINNIPEG
WORKS & OPERATIONS
DIVISION
STREETS & TRANSPORTATION
DEPARTMENT

BRIDGE OVER OMAND'S CREEK ON SASKATCHEWAN AVE. BRIDGE MAINTENANCE BRIDGE HANDRAIL RENEWAL WORKS (SOUTH SIDE ONLY)

AUTHORIZED BY: *William P. King* 1984-09-05
DATE: *1984-09-05*

ACCEPTED BY: *T.C. Cooke*
DATE: *1984-09-05*

SCALE: AS SHOWN
DRAWING NO. B144-84-01