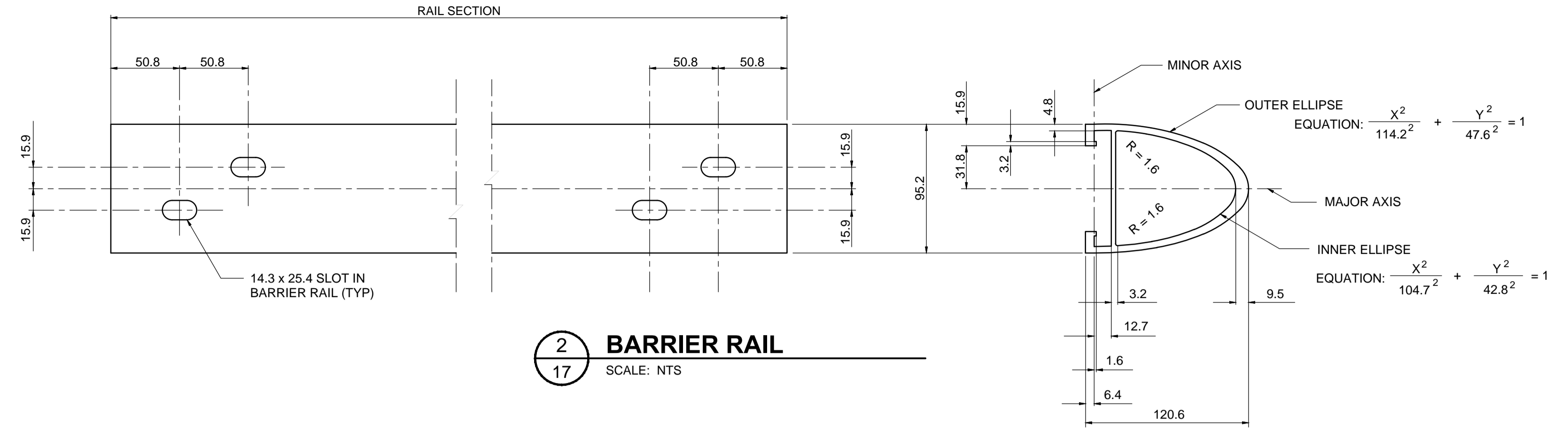
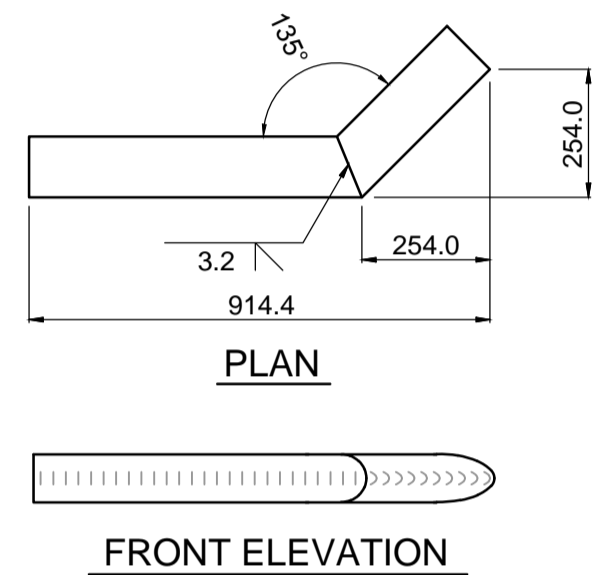


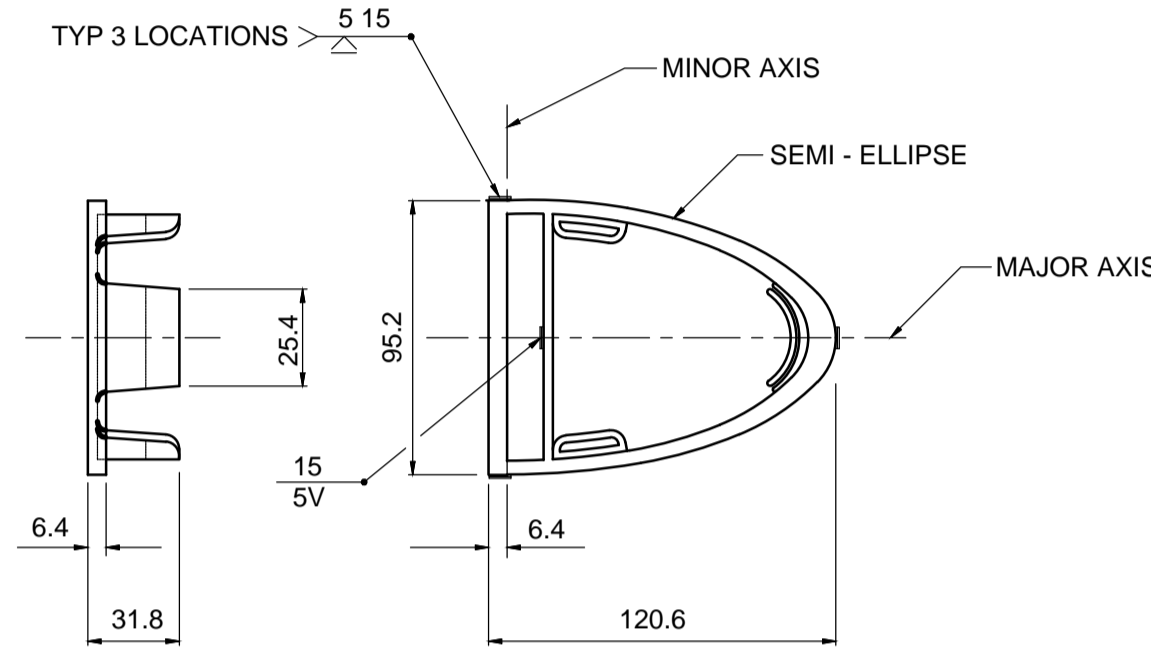
1 RAIL CLAMP BAR
SCALE: NTS



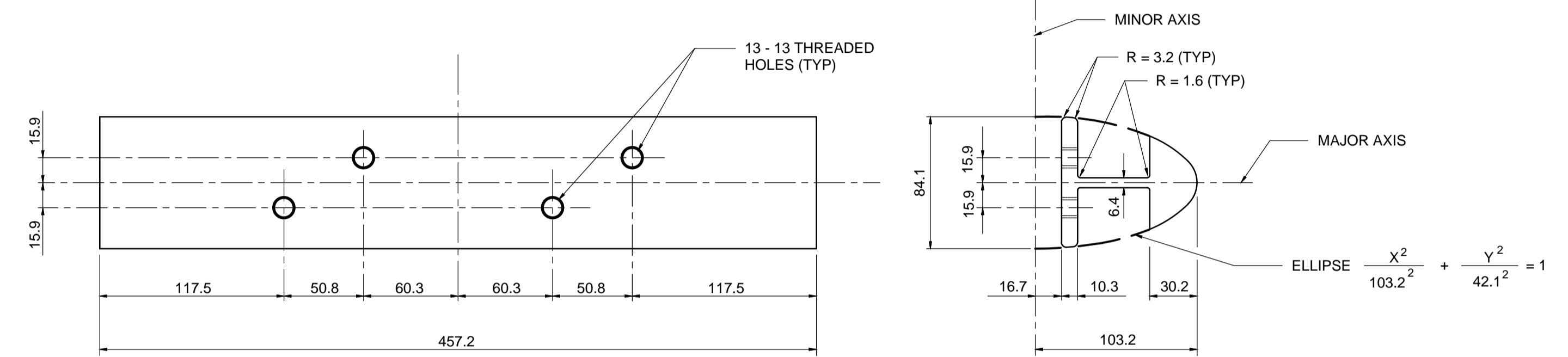
2 BARRIER RAIL
SCALE: NTS



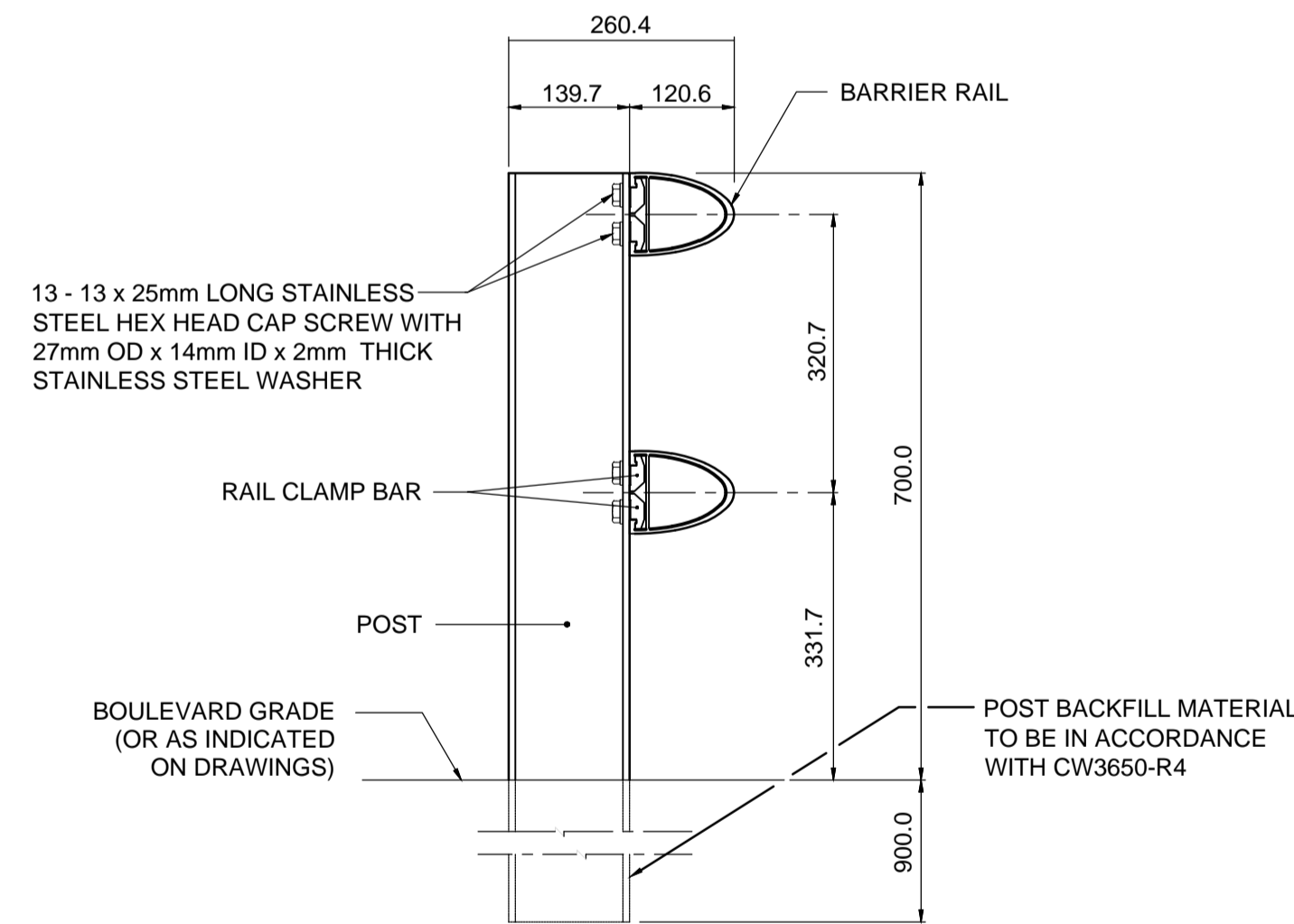
TERMINAL END
(FABRICATED FROM BARRIER RAIL)



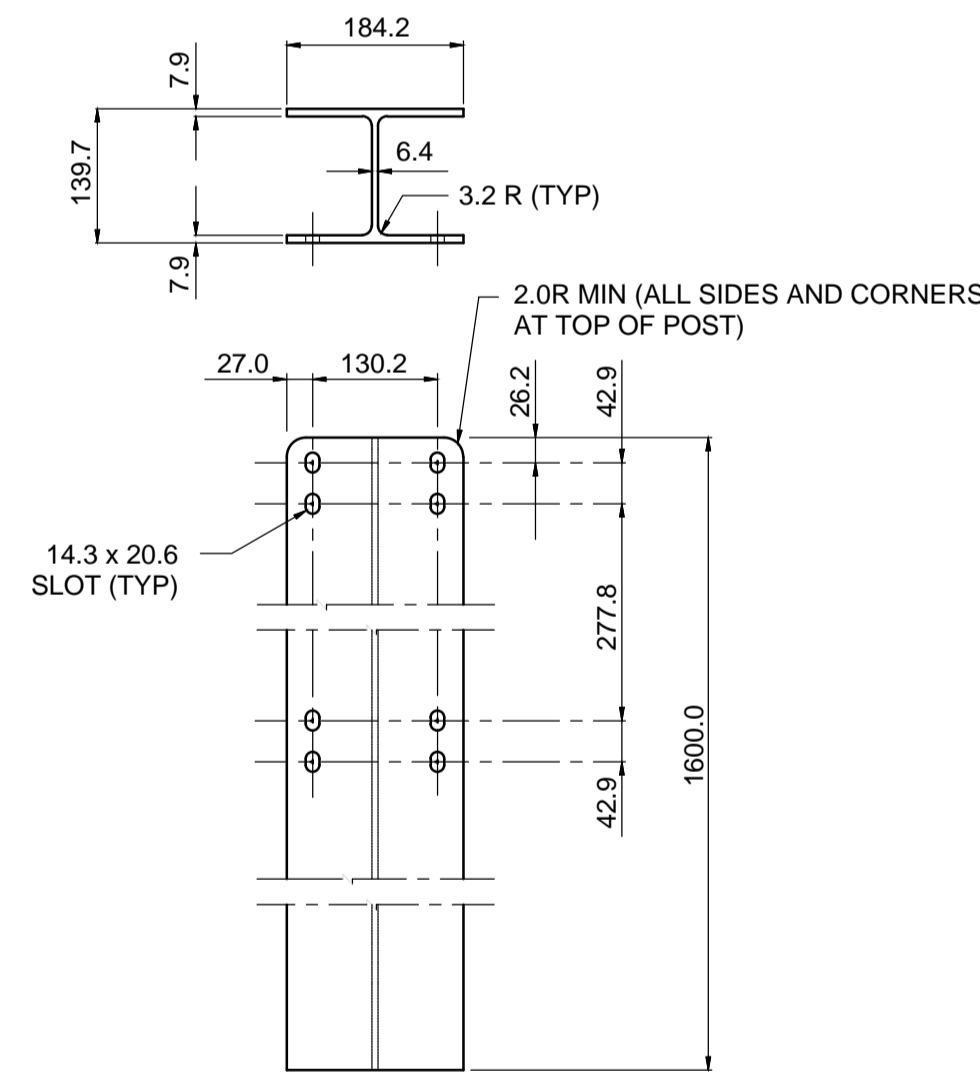
3 RAIL END CAP
SCALE: NTS



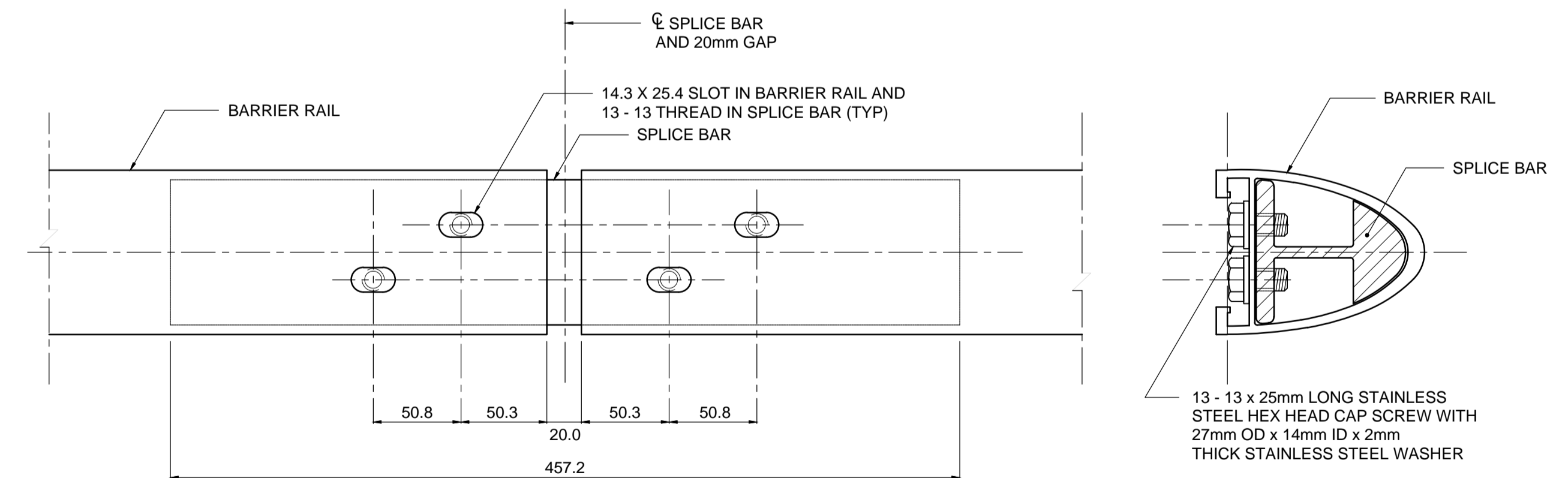
4 SPLICE BAR
SCALE: NTS



5 RAIL TO POST ASSEMBLY DETAIL
SCALE: NTS



6 1.6m POST
(0.800m POST SIMILAR EXCEPT WITH ONLY FOUR SLOTS AT TOP OF POST)
SCALE: NTS



7 SPLICE BAR TO RAIL ASSEMBLY
SCALE: NTS

MATERIAL SPECIFICATION

- ALUMINUM RAILS, POSTS, SPLICE BARS, AND RAIL END CAPS SHALL CONFORM TO ASTM B221, ALLOY 6061 - T6, OR ALLOY 6351 - T6.
- TYPE 316. STAINLESS STEEL WASHERS SHALL CONFORM TO ASTM A296, TYPE 316.
- CAP SCREWS SHALL CONFORM TO ASTM A276, TYPE 316 STAINLESS STEEL.
- ANTI-SEIZE COATING TO BE APPLIED TO ALL THREADED COMPONENTS WHEN BEING ASSEMBLED.
i.e. LPS-3-MANUFACTURED BY HOLT LLOYD (CANADA) LTD., MARKHAM, ONTARIO L3R 2Z3
- TWO COATS, EACH 1mm IN THICKNESS OF ALKALI-RESISTANT BITUMINOUS PAINT SHALL BE APPLIED ON THE SURFACES OF POSTS AND RAILS THAT ARE IN CONTACT WITH THE GROUND.



METRIC
WHOLE NUMBERS INDICATE MILLIMETRES
DECIMALIZED NUMBERS INDICATE METRES

LOCATION APPROVED UNDERGROUND STRUCTURES			
SUPR. U/G STRUCTURES COMMITTEE	DATE		
NOTE:	LOCATION OF UNDERGROUND STRUCTURES AS SHOWN ARE BASED ON THE BEST INFORMATION AVAILABLE BUT NO GUARANTEE IS GIVEN THAT ALL EXISTING UTILITIES ARE SHOWN OR THAT THE GIVEN LOCATIONS ARE EXACT. CONFIRMATION OF EXISTENCE AND EXACT LOCATION OF ALL SERVICES MUST BE OBTAINED FROM THE INDIVIDUAL UTILITIES BEFORE PROCEEDING WITH CONSTRUCTION.		

BM ELEV			
0	ISSUED FOR TENDER	15/10/22	JGK
No.	REVISIONS	YYMMDD	BY

MORRISON HERSHFIELD			
DESIGNED BY	STANDARD	CHECKED BY	SAL
DRAWN BY	DML	APPROVED BY	BE
HOR. SCALE	AS SHOWN	ACCEPTED BY	DATE
VERT. SCALE	AS SHOWN	ORIGINAL DRAWING SIGNED BY: D.N. BURMEY, P.ENG.	15/10/22
DATE	15/04/24	D.N. BURMEY, P.ENG. BRIDGE PROJECTS ENGINEER	

PROFESSIONAL'S SEAL
CONSULTANT DRAWING No. W150005-ALBB-17.dwg

SASKATCHEWAN AVENUE AT OMAND'S CREEK BRIDGE REPLACEMENT	
ALUMINUM BALANCED BARRIER STANDARD DETAILS	
CITY DRAWING NUMBER B144-16-17 SHEET 17 OF 18 DRAWING No. 17 REV 0	BID OPPORTUNITY No. 775-2015