

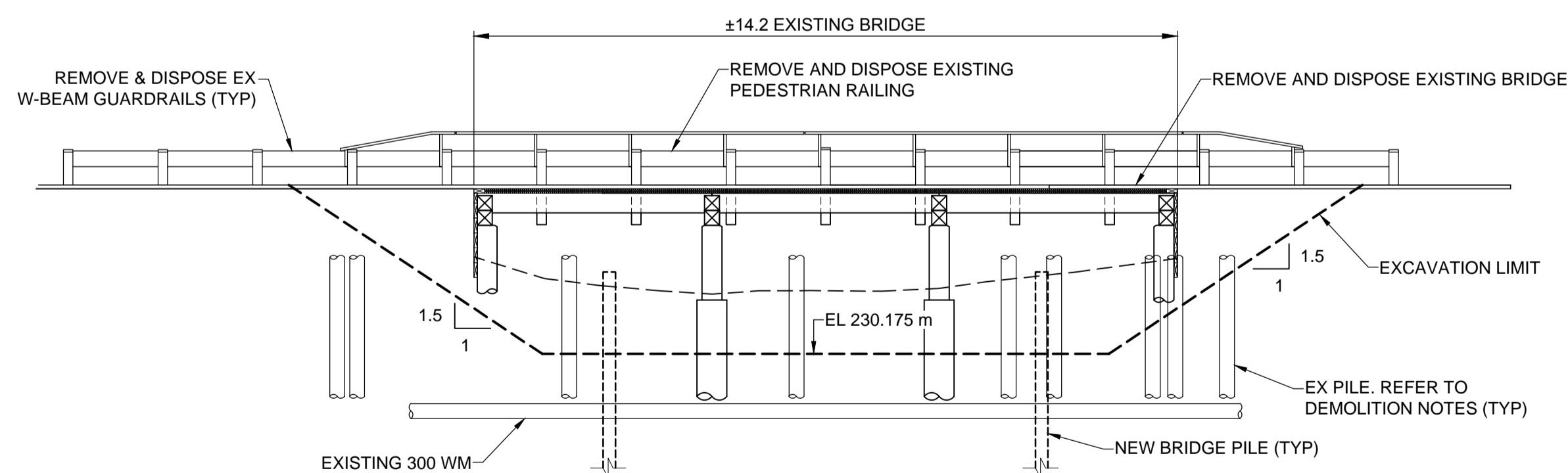
**PLAN**

SCALE: 1:200



**PILE LEGEND:**

- - ABANDONED TIMBER PILES
- - EXISTING TIMBER PILES
- ⊙ - EXISTING CAST-IN PLACE CONCRETE PILES



**SOUTH ELEVATION**

EXISTING BRIDGE DEMOLITION  
SCALE: 1:100

**DEMOLITION NOTES:**

- REMOVE AND DISPOSE EXISTING BRIDGE.
- CUT-OFF EXISTING PILES AT LEAST 0.5 m BELOW THE BASE OF EXCAVATION.
- REFER TO REFERENCE DRAWINGS FOR FURTHER DETAILS OF EXISTING STRUCTURE.

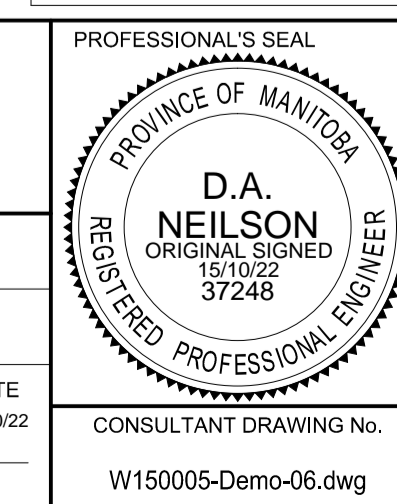
**METRIC**

WHOLE NUMBERS INDICATE MILLIMETRES  
DECIMALIZED NUMBERS INDICATE METRES

---	GAS	○	MANHOLE	●	CONCRETE PAVEMENT	LOCATION APPROVED UNDERGROUND STRUCTURES SUPR. / UG STRUCTURES COMMITTEE DATE NOTE: LOCATION OF UNDERGROUND STRUCTURES AS SHOWN ARE BASED ON THE BEST INFORMATION AVAILABLE BUT NO GUARANTEE IS GIVEN THAT ALL EXISTING UTILITIES ARE SHOWN OR THAT THE GIVEN LOCATIONS ARE EXACT. CONFIRMATION OF EXISTENCE AND EXACT LOCATION OF ALL SERVICES MUST BE OBTAINED FROM THE INDIVIDUAL UTILITIES BEFORE PROCEEDING WITH CONSTRUCTION.	
---	MTS	□	CATCH BASIN/CATCH PIT	■	CONC SIDEWALK/MEDIAN		
---	HYDRO	△	CURB INLET WITH BOX	▲	ASPHALT PAVEMENT		
---	CATV / FIBRE OPTIC	⊙	TREE	⊙	PAVING STONE		
---	TRAFFIC SIGNALS / PIT	⊕	TH-12 TEST HOLE	⊕	GRAVEL	---	RAMP CURB
---	LAND DRAINAGE SEWER	---	PROPERTY LINE	---	PLANING / REMOVAL	---	
---	WWS/CS SEWER	---	SURVEY BAR	---			
---	CB LEAD	---	FENCE	---			
---	WATERMAIN	---	BOC/EDGE OF PAVEMENT	---			
---	SUBDRAIN	---	ELEVATION (33.333)	---			
---	DITCH	---	TRAFFIC SIGN	---			
---	EXISTING	---	LEGEND - PLAN	---	EXISTING	---	LEGEND - PLAN
---	NEW	---	LEGEND - PLAN	---	NEW	---	LEGEND - PLAN



DESIGNED BY	DAN	CHECKED BY	SAL
DRAWN BY	DML	APPROVED BY	BE
HOR. SCALE	AS SHOWN	ACCEPTED BY	DATE
VERT. SCALE	AS SHOWN	SIGNED BY	D.N. BURMEY, P. ENG.
DATE	15/04/24	BRIDGE PROJECTS ENGINEER	



BID OPPORTUNITY No. 775-2015

**THE CITY OF WINNIPEG**  
**PUBLIC WORKS DEPARTMENT**  
**ENGINEERING DIVISION**

**SASKATCHEWAN AVENUE AT OMAND'S CREEK**  
**BRIDGE REPLACEMENT**

DEMOLITION

CITY DRAWING NUMBER	B144-16-06
SHEET	06 OF 18
DRAWING No.	REV
<b>06</b>	
0	