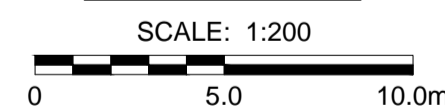


**SITE PLAN**

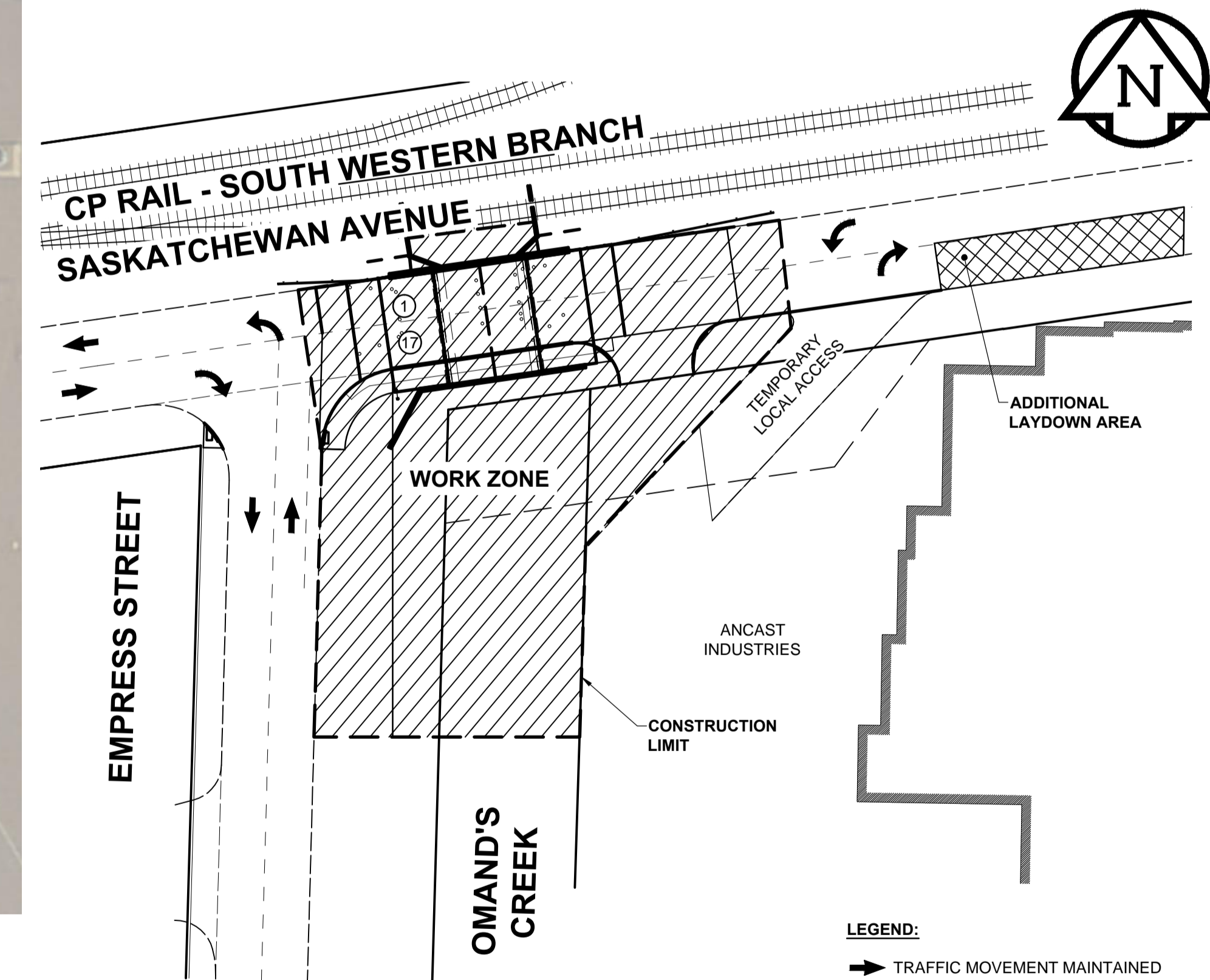


**LIMIT OF CONSTRUCTION ARE:**

- WEST - EMPRESS ST/SASKATCHEWAN AVE INTERSECTION
- NORTH - EXISTING CPR TIMBER BRIDGE
- EAST - ANCAST INDUSTRIES TEMPORARY ACCESS (MAINTAIN LOCAL ACCESS FOR HEAVY TRUCKS). ADDITIONAL LAYDOWN AREA AVAILABLE IN SOUTH LANE FURTHER EAST TO THE ANCAST INDUSTRIES LOCAL ACCESS (NOT SHOWN).
- SOUTH - 40 m SOUTH OF THE EXISTING SASKATCHEWAN AVE CURB LIMIT.

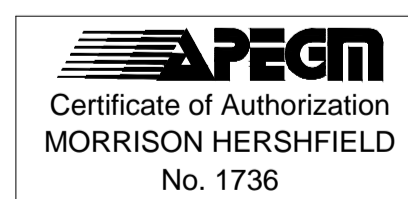
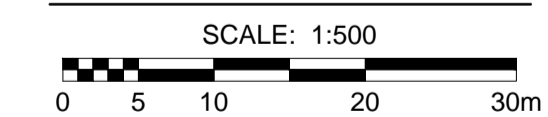
**SCOPE OF WORK:**

- | NOTE NUMBER | DESCRIPTION  |
|-------------|--|
| 1           | IMPLEMENT TRAFFIC STAGING/ CONTROL MEASURES & MOBILIZE.  |
| 2           | INSTALL TEMPORARY DAMS UPSTREAM AND DOWNSTREAM OF WORK SITE AND PROVIDE MEANS TO PUMP CREEK PAST CONSTRUCTION ZONE IN THE EVENT OF UNEXPECTED THAW.                                      |
| 2           | IMPLEMENT ENVIRONMENTAL CONTROL MEASURES.  |
| 3           | CONSTRUCT TEMPORARY SECURITY FENCE FOR ANCAST INDUSTRIES AT EDGE OF PROPOSED STAGING AREA. MAXIMUM EXTENT INTO ANCAST INDUSTRIES PROPERTY IS SHOWN ON THE DRAWINGS.                      |
| 4           | CONSTRUCT EQUIPMENT ACCESS TO THE CREEK FROM THE EAST BANK SOUTH OF THE BRIDGE ENSURING OPERATION CONSTRAINTS NEAR THE 900 FEEDERMAIN ARE FOLLOWED.                                      |
| 5           | CONSTRUCT STAY-IN-PLACE SHORING ADJACENT TO CP RAIL LINE (DESIGN DELEGATED TO CONTRACTOR).   |
| 6           | EXCAVATE AND DEMOLISH EXISTING BRIDGE STRUCTURE.   |
| 6           | INSTALL HEATING AND HOARDING AT BRIDGE WORK SITE.  |
| 6           | INSTALL PILES.   |
| 6           | INSTALL SUBSTRUCTURE FORMWORK, STEEL REINFORCEMENT, BEARING PADS AND ANCHOR RODS, AND POUR SUBSTRUCTURE CONCRETE.  |
| 6           | BACKFILL BEHIND RETAINING WALLS PRIOR TO POURING BRIDGE DECK CONCRETE.   |
| 6           | INSTALL BRIDGE DECK FORMWORK, STEEL REINFORCEMENT, POUR AND CURE BRIDGE DECK CONCRETE.   |
| 6           | INSTALL CONCRETE BARRIER FORMWORK, STEEL REINFORCEMENT, POUR AND CURE CONCRETE BARRIER CONCRETE.   |
| 6           | INSTALL APPROACH SLAB FORMWORK, STEEL REINFORCEMENT, POUR AND CURE APPROACH SLABS AND BARRIERS ON APPROACH SLABS.  |
| 6           | INSTALL GUARDRAIL ON CONCRETE BARRIERS.  |
| 7           | SHAPE CHANNEL TO DESIGN GEOMETRY. THAWING OF FROZEN GROUND MAY BE REQUIRED, PARTICULARLY ABOVE THE 900 FEEDERMAIN. PLACE INSULATION OVER 300 WATERMAIN AND 900 FEEDERMAIN.               |
| 7           | PLACE 525 THICK CLASS 350 CRUSHED WELL-GRADED ANGULAR RIP RAP OVER GEOTEXTILE FABRIC.  |
| 8           | PLACE EROSION CONTROL BLANKET AND SEED DISTURBED AREAS OF THE CHANNEL WHICH ARE NOT COVERED WITH RIPRAP.   |
| 9           | REMOVE TEMPORARY ACCESS TO THE STREAM. VACATE THE STREAM PRIOR TO APRIL 15, 2016.  |
| 10          | WOOD HYDRO POLE WITH STREETLIGHT AT THE SE CORNER OF THE EMPRESS STREET/ SASKATCHEWAN AVENUE INTERSECTION IS TO BE RELOCATED (BY OTHERS).  |
| 11          | CONSTRUCT ROADWORKS TO TIE INTO NEW BRIDGE INCLUDING REINFORCED CONCRETE PAVEMENT, CONCRETE BARRIER AND MODIFIED CONCRETE BARRIER CURB, MILLING ASPHALT PAVEMENT, AND CONCRETE SIDEWALK. |
| 12          | INSTALL ALUMINUM BALANCED BARRIER.   |
| 13          | INSTALL BRIDGE WATERPROOFING MEMBRANE.   |
| 13          | PLACE AND COMPACT ASPHALTIC CONCRETE OVERLAY (TYPE 1A).  |
| 14          | CONSTRUCT NEW REINFORCED CONCRETE APPROACH TO ANCAST INDUSTRIES.   |
| 15          | REMOVE TEMPORARY ANCAST ACCESS AND RESTORE SECURITY FENCE AND BOULEVARD.   |
| 16          | LANDSCAPING (TOPSOIL AND SOD) DISTURBED BOULEVARD AREAS.   |
| 17          | DEMobilize & REMOVE TRAFFIC STAGING/CONTROL MEASURES.  |



**TRAFFIC STAGING**

**TRAFFIC STAGING**



**METRIC**  
WHOLE NUMBERS INDICATE MILLIMETRES  
DECIMALIZED NUMBERS INDICATE METRES

EXISTING	LEGEND - PLAN	NEW	EXISTING	LEGEND - PLAN	NEW	EXISTING	LEGEND - PLAN	NEW
---	GAS	---	○	MANHOLE	●	---	CONCRETE PAVEMENT	---
---	MTS	---	□	CATCH BASIN/CATCH PIT	■	---	CONC SIDEWALK/MEDIAN	---
---	HYDRO	---	△	CURB INLET WITH BOX	▲	---	ASPHALT PAVEMENT	---
---	CATV / FIBRE OPTIC	---	⊙	TREE	⊙	---	PAVING STONE	---
---	TRAFFIC SIGNALS / PIT	---	⊕	TEST HOLE	⊕	---	GRAVEL	---
---	LAND DRAINAGE SEWER	---	⊕	PROPERTY LINE	---	---	RAMP CURB	---
---	WWS/CS SEWER	---	⊕	SURVEY BAR	---	---	PLANING / REMOVAL	---
---	CB LEAD	---	⊕	FENCE	---	---		---
---	WATERMAIN	---	⊕	BOC/EDGE OF PAVEMENT	---	---		---
---	SUBDRAIN	---	33.000	ELEVATION	(33.333)	---		---
---	DITCH	---	---	TRAFFIC SIGN	---	---		---

**LOCATION APPROVED**  
UNDERGROUND STRUCTURES

SUPR. U/G STRUCTURES DATE COMMITTEE

**NOTE:**  
LOCATION OF UNDERGROUND STRUCTURES AS SHOWN ARE BASED ON THE BEST INFORMATION AVAILABLE BUT NO GUARANTEE IS GIVEN THAT ALL EXISTING UTILITIES ARE SHOWN OR THAT THE GIVEN LOCATIONS ARE EXACT. CONFIRMATION OF EXISTENCE AND EXACT LOCATION OF ALL SERVICES MUST BE OBTAINED FROM THE INDIVIDUAL UTILITIES BEFORE PROCEEDING WITH CONSTRUCTION.

BM ELEV	36-052 234.826m	S.W. COR. SASKATCHEWAN AVE. & EMPRESS ST., TRLT. IN MOST N.E. CONC. FOUNDATION NO. 1400 SASKATCHEWAN AVE. (ABST. 1.5m W & 0.15m BELOW TOP OF CONC. FOUNDATION OF N.E. COR. OF MOST N.E. PART OF BLDG.)
No.	ISSUED FOR TENDER	15/10/22 DAN
Revisions	YYMMDD	BY

**MORRISON HERSHFIELD**

DESIGNED BY	DAN	CHECKED BY	SAL
DRAWN BY	DML	APPROVED BY	BE
HOR. SCALE	AS SHOWN	ACCEPTED BY	DATE
VERT. SCALE	AS SHOWN	ORIGINAL DRAWING	15/10/22
DATE	15/04/24	SIGNED BY	D.N. BURMEY, P. ENG.
		TITLE	BRIDGE PROJECTS ENGINEER

PROFESSIONAL'S SEAL

PROVINCE OF MANITOBA

**D.A. NEILSON**  
ORIGINAL SIGNED 15/10/22  
REGISTERED PROFESSIONAL ENGINEER

CONSULTANT DRAWING No. W150005-SCOPE-03.dwg

**THE CITY OF WINNIPEG**  
PUBLIC WORKS DEPARTMENT  
ENGINEERING DIVISION

**SASKATCHEWAN AVENUE AT OMAND'S CREEK  
BRIDGE REPLACEMENT**

SCOPE OF WORK

CITY DRAWING NUMBER B144-16-03

SHEET 03 OF 18

DRAWING No. 03 REV 0

BID OPPORTUNITY No. 775-2015