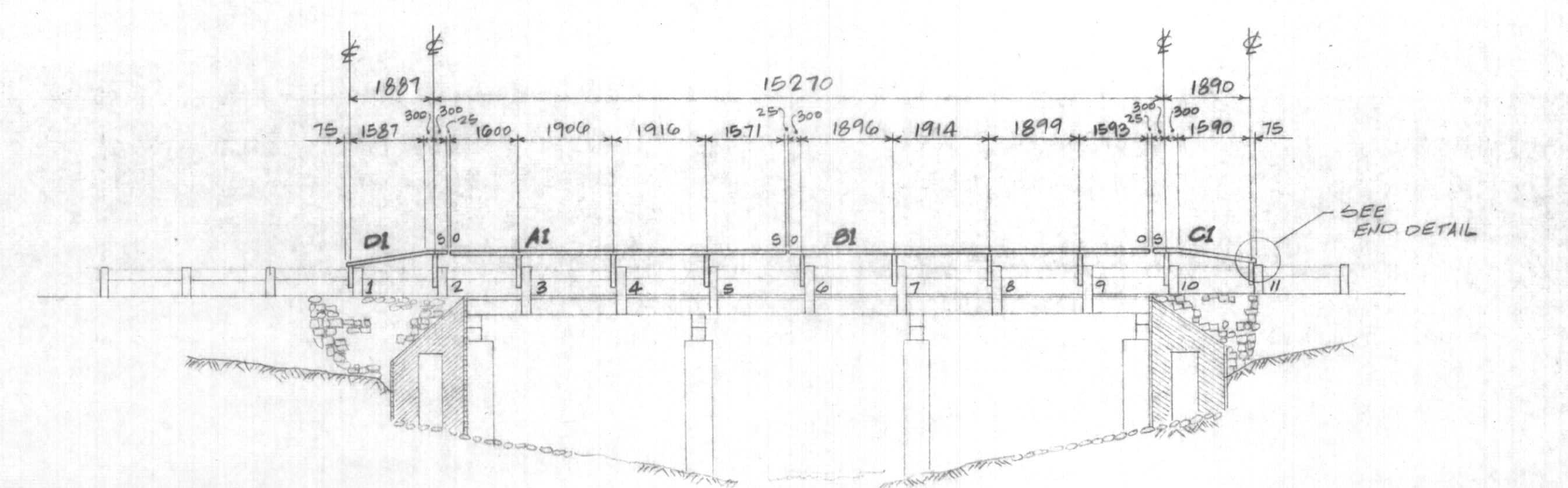
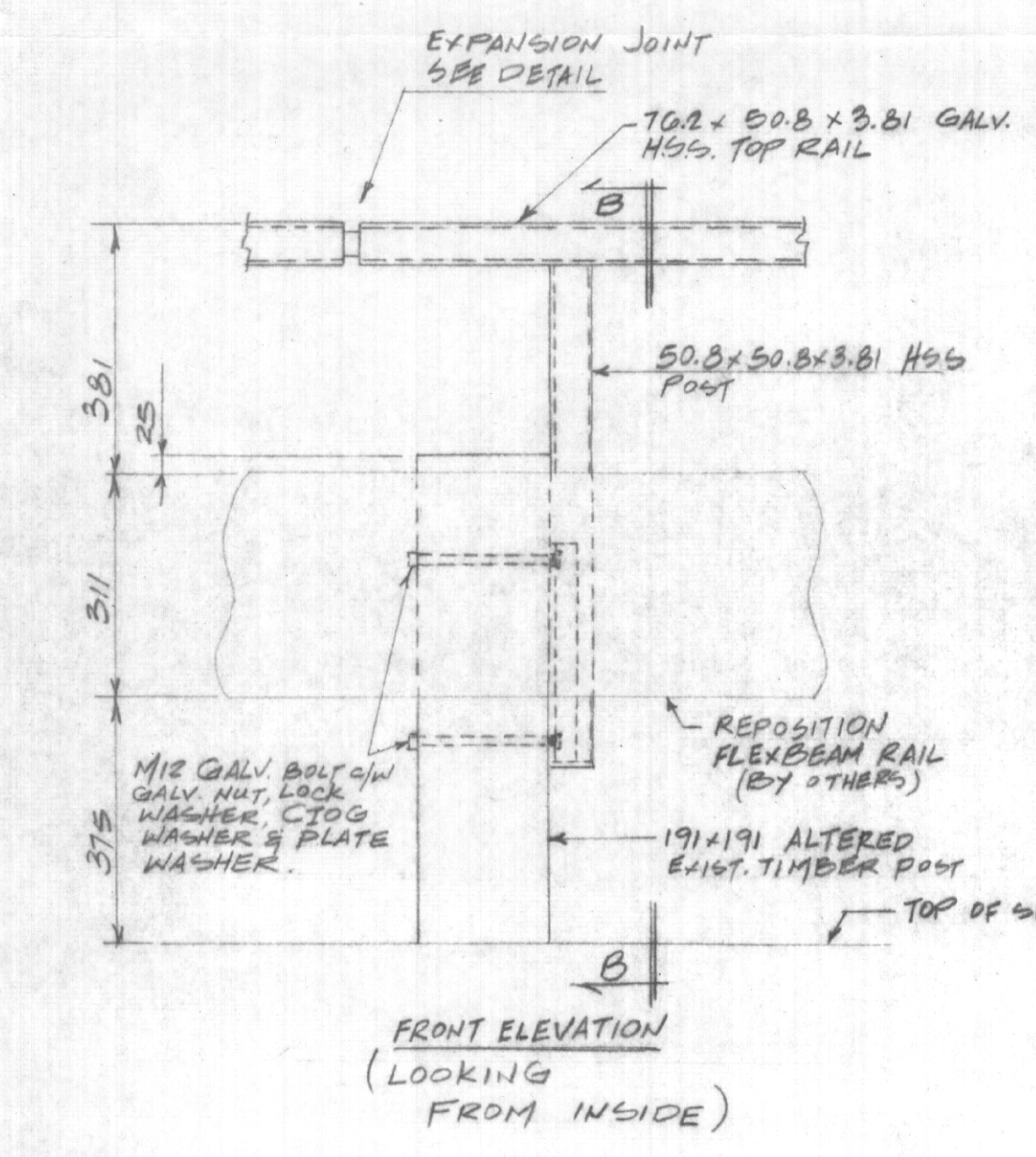


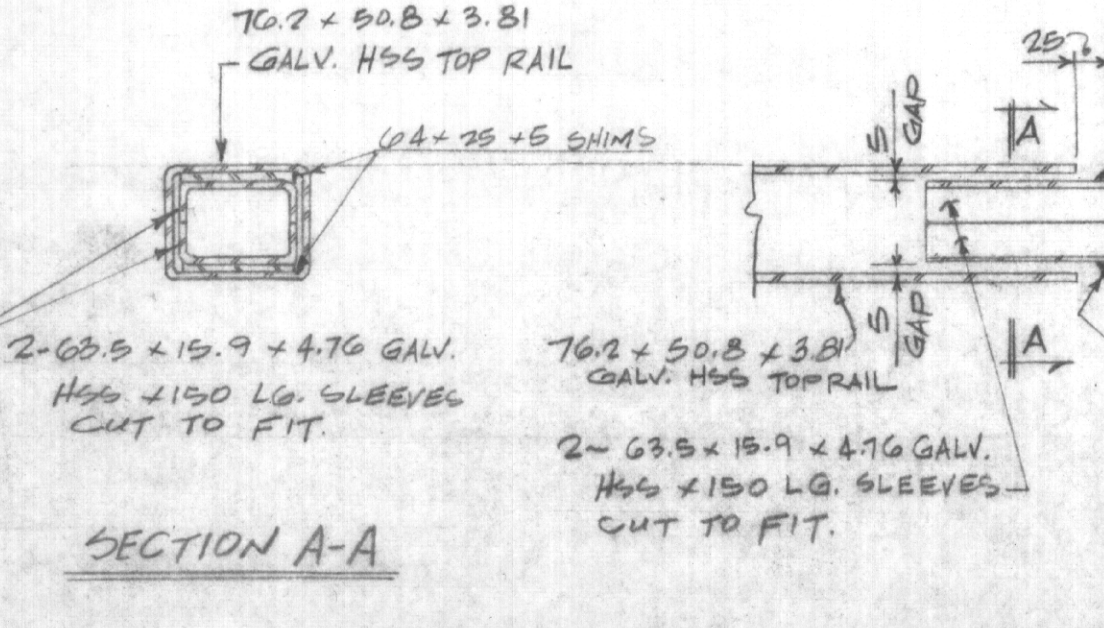
PLAN



ELEVATION

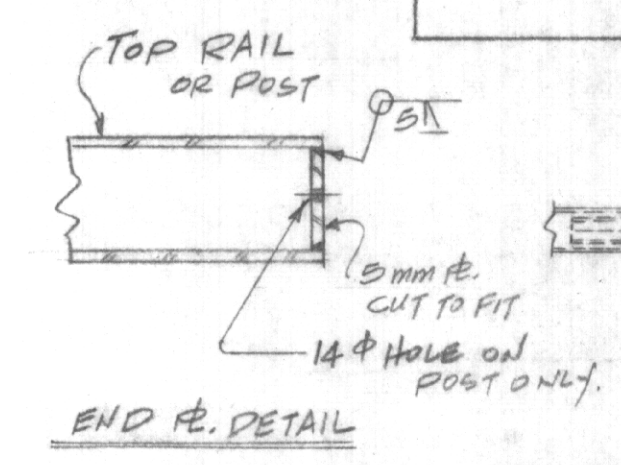


SECTION B-B

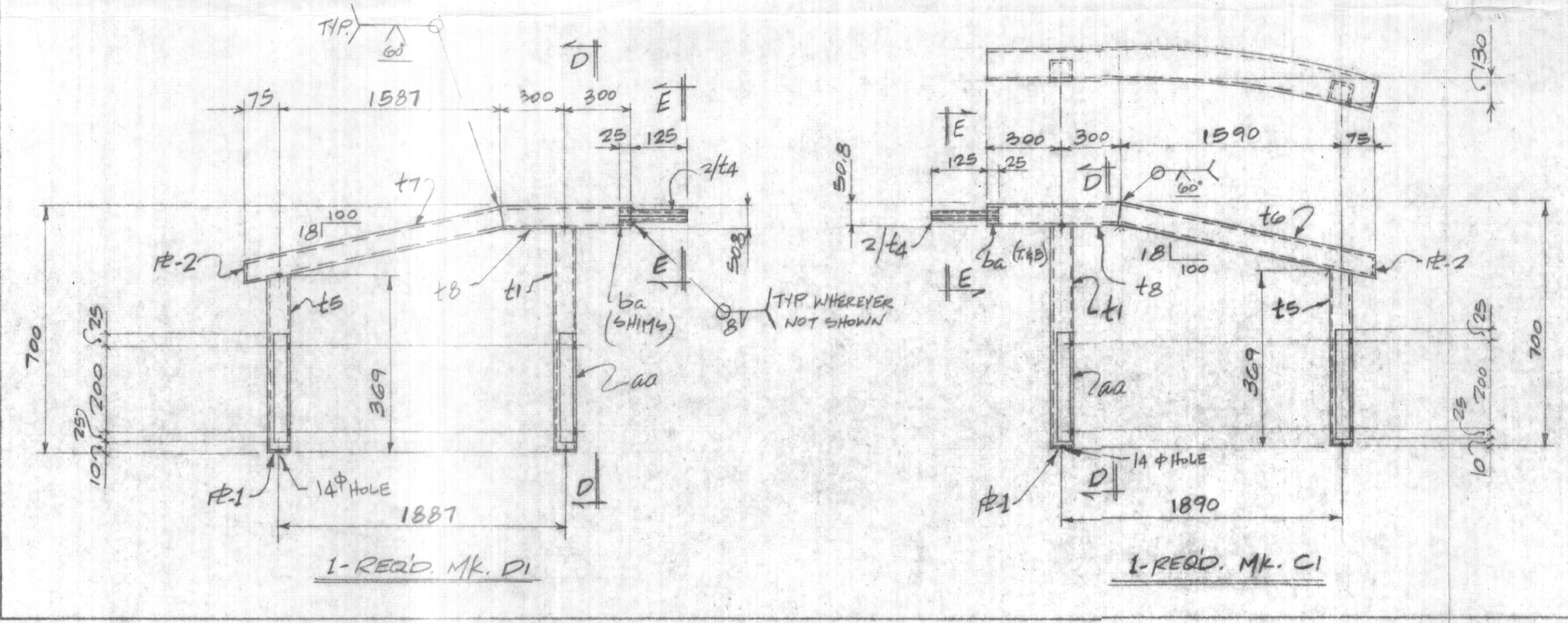


SECTION A-A

EXPANSION JOINT

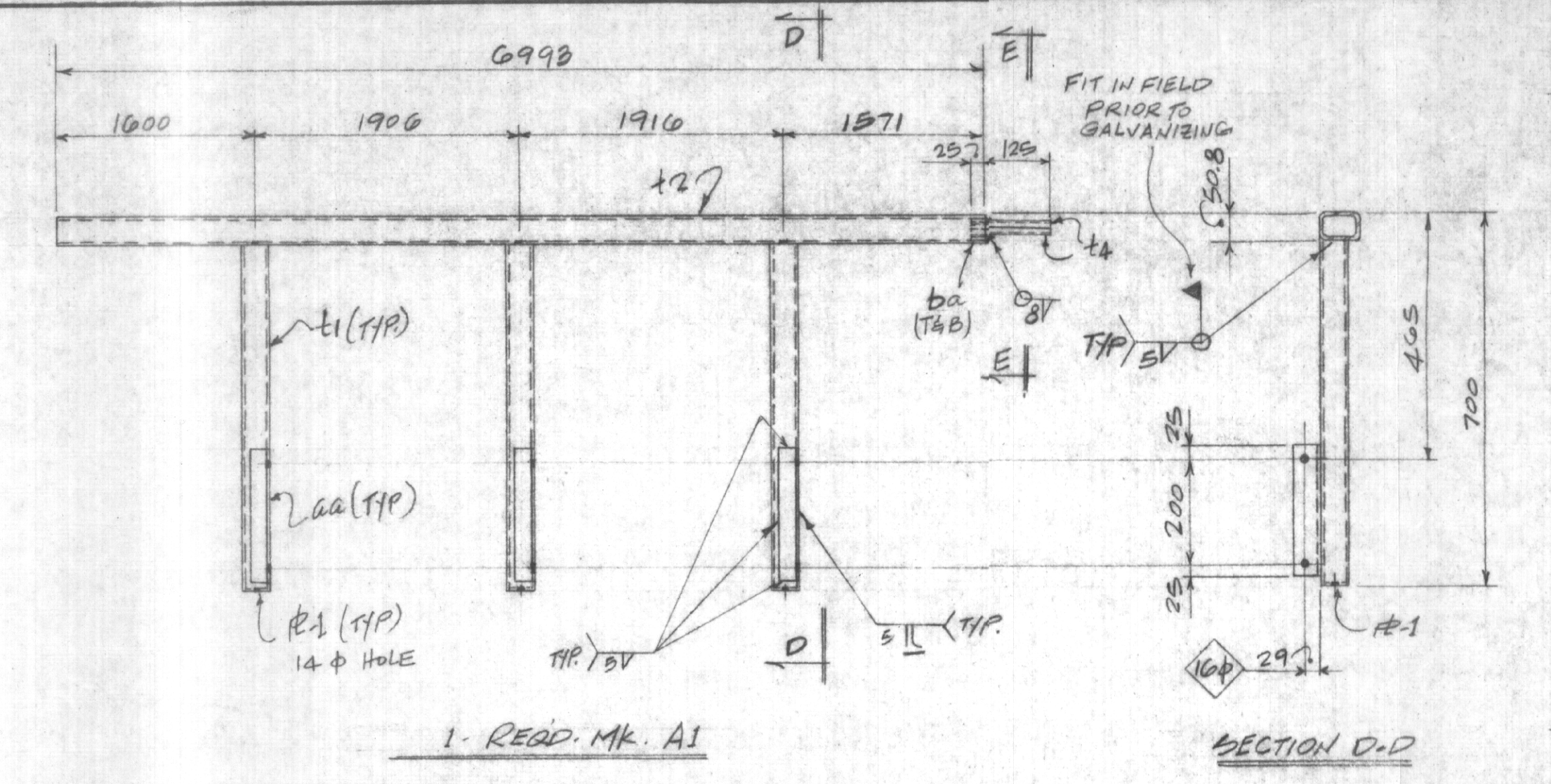


SECTION C-C

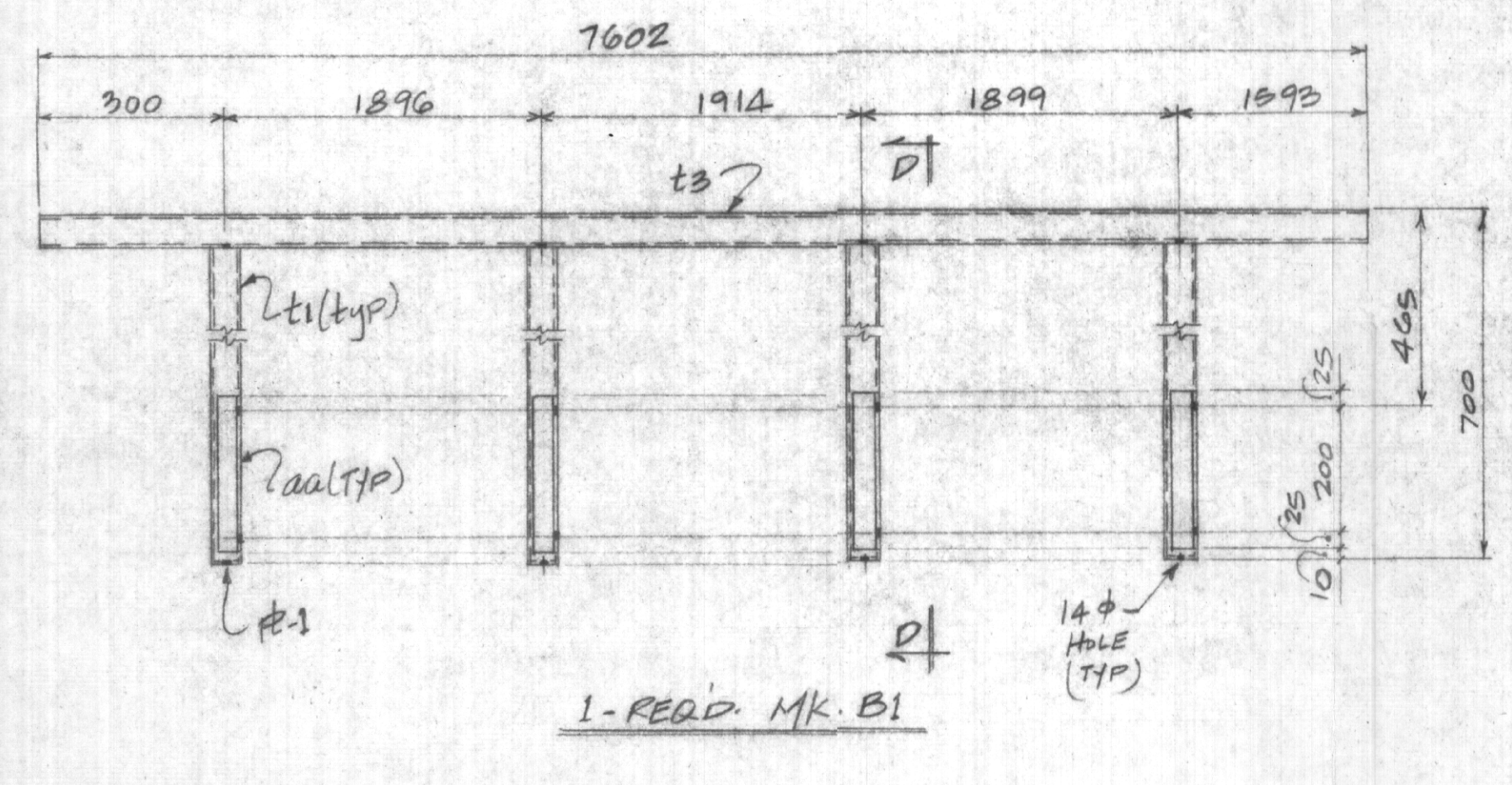


TYPICAL HANDRAIL END SECTION DETAIL

EAST END SECTION - AS SHOWN
WEST END SECTION - OPP. HAND
[BACK ELEV.]



SECTION E-E



1-REQD. MK. B1

Part No.	Req'd.	DESCRIPTION	LENGTH	MATERIAL	REMARKS
1-REQD. MK. A1					
t1	3	HSS 50.8 x 50.8 x 3.81	649		
t2	1	HSS 76.2 x 50.8 x 3.81	699		
aa	3	L 51 x 38 x 5	200		
ra-1	3	FE 5 x 43	43		14" HOLE
ra-2	2	HSS 63.5 x 15.9 x 4.76	150		CUT TO FIT.
ba	2	FL 25 x 5	64		
1-REQD. MK. B1					
t1	4				
t2	1	HSS 76.2 x 50.8 x 3.81	760		
ra-1	4				
aa	4				
1-REQD. MK. C1					
t1	1				
t2	1	HSS 50.8 x 50.8 x 3.81	369		BEVEL O/E
ta	1	HSS 76.2 x 50.8 x 3.81	1700		CURVE & BEV. O/E
ta	2				
aa	2				
ra-1	2				
ra-2	2				
ra-2	1	FE 5 x 43	68		
tb	1	HSS 76.2 x 50.8 x 3.81	600		
1-REQD. MK. D1					
t1	1				
tb	1				
ta	1	HSS 76.2 x 50.8 x 3.81	1700		BEV. B/E
ta	2				
aa	2				
ra-1	2				
ra-2	2				
ra-2	1				
tb	1	HSS 76.2 x 50.8 x 3.81	600		BEV. O/E
- FIELD BOLTS -					
ra	22	12 φ M. BOLT	229		C/W 'N', 'W', 'C/OB. W.
- STANDBY PARTS TO BE SUPPLIED - (PLAIN MATERIAL)					
ra	2	HSS 76.2 x 50.8 x 3.81	1000		
ra	4	HSS 50.8 x 50.8 x 3.81	650		
ra	2	HSS 63.5 x 15.9 x 4.76	150		
ra	4	12 φ M. BOLT	229		C/W 'N', 'W', 'C/OB. W.
ta/ta	1	WELDED TOGETHER			
ta	1	C/W WELDED aa			
tb	1	C/W WELDED aa			

Part No.	Req'd.	DESCRIPTION	LENGTH	MATERIAL	REMARKS
TITLE BRIDGE HANDRAIL RENEWAL WORKS (SOUTH SIDE ONLY)					
PROJECT BRIDGE OVER OMAND'S CREEK ON SASKATCHEWAN AVE. CITY OF WINNIPEG, MANITOBA					
ARCHITECT/ENGINEER CITY OF WINNIPEG					
CUSTOMER TRIDENT CONST. LTD.					
DRAWN P.C. OCT. 84					
SUPERVISOR (GC) FOREMAN (GC)					
TRANSFER JOB CAPTAIN (ARCH) PAINT GALVANIZED					
JOB/DWG. NO. 8629-1					

SHOPPOST
IRON WORKS LTD.

675 PLINQUET ST., WINNIPEG, MAN. R2J 2X1
PHONE 233-3783