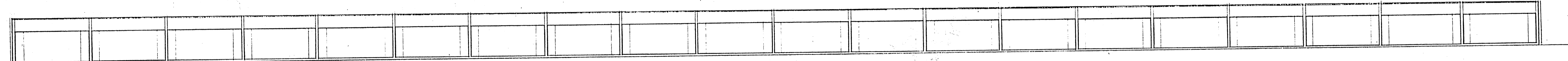
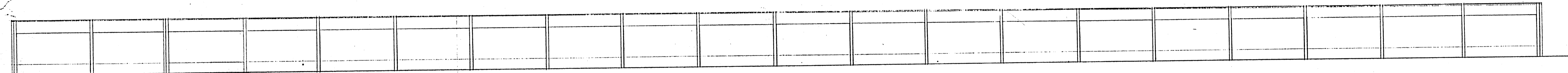


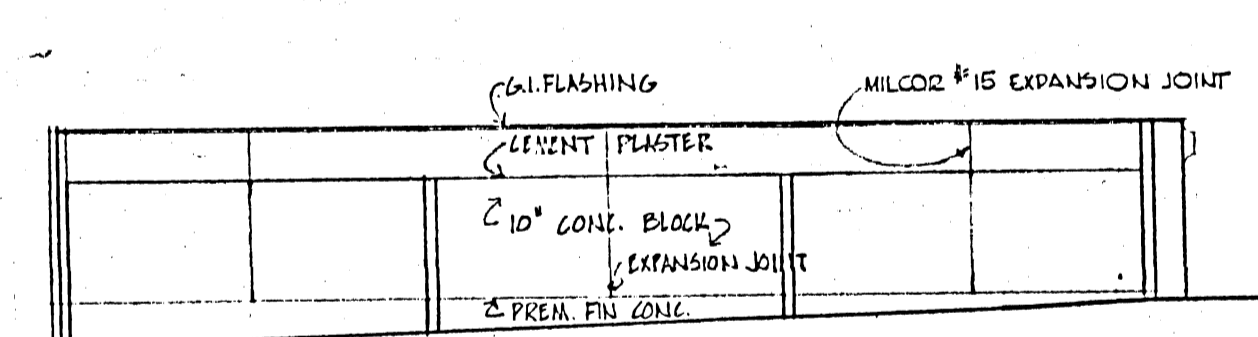
MAIN FLOOR PLAN
SCALE 1/16" = 1'-0"



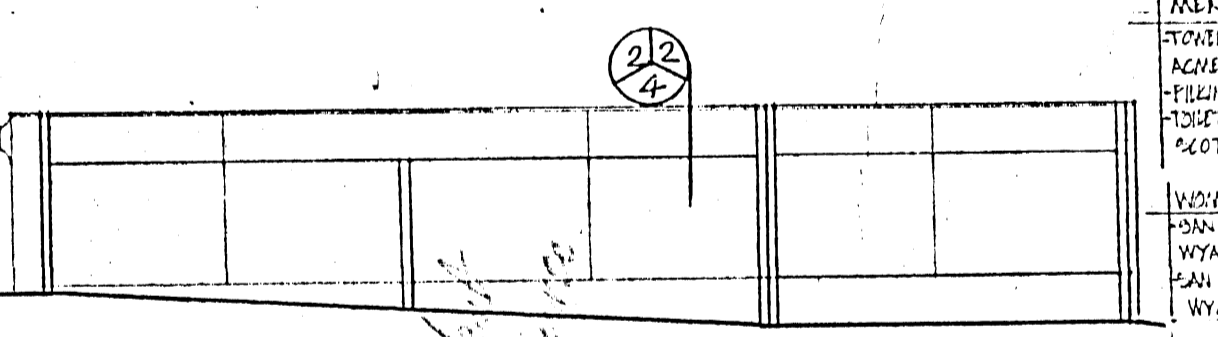
EAST ELEVATION
SCALE 1/16" = 1'-0"



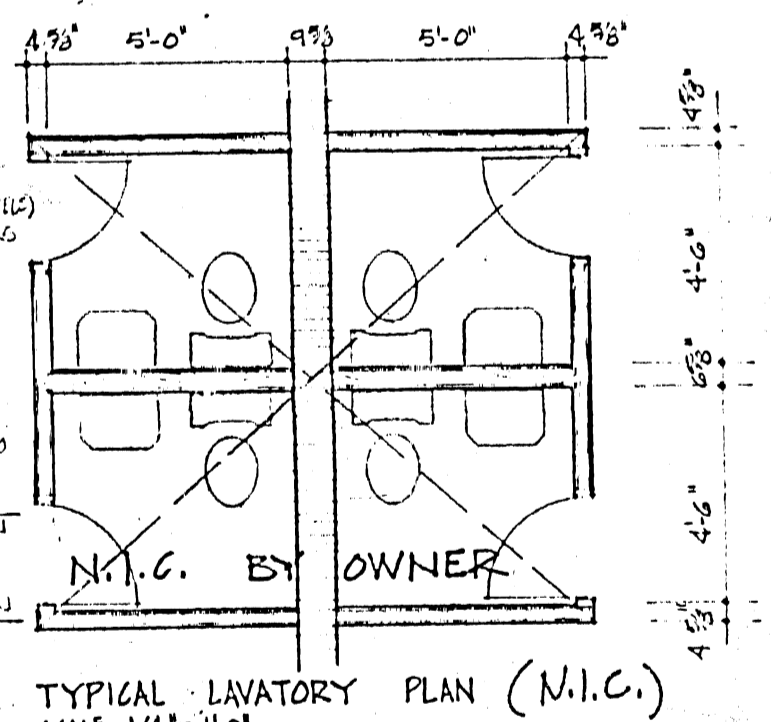
WEST ELEVATION
SCALE 1/16" = 1'-0"



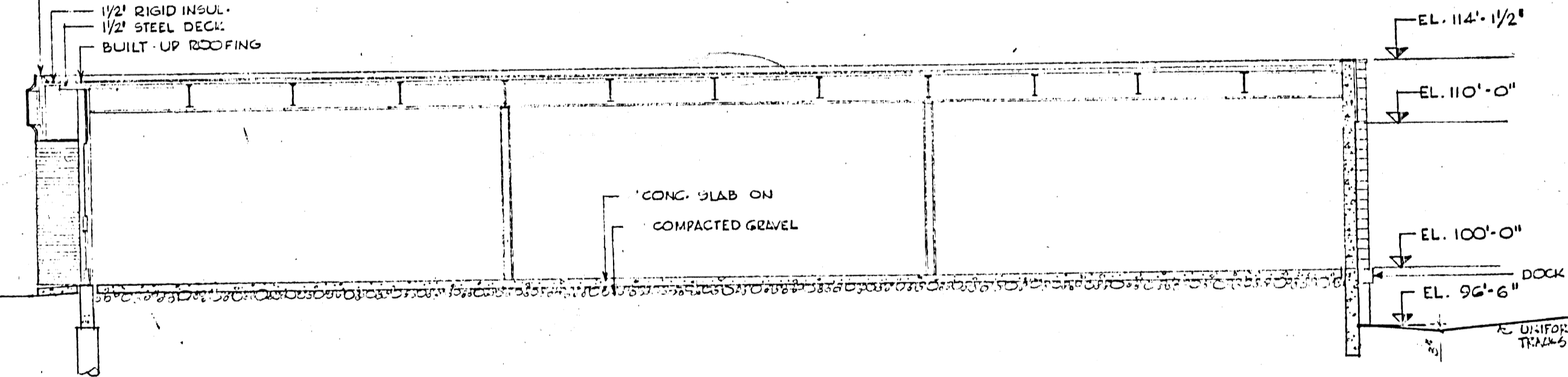
SOUTH ELEVATION
SCALE 1/16" = 1'-0"



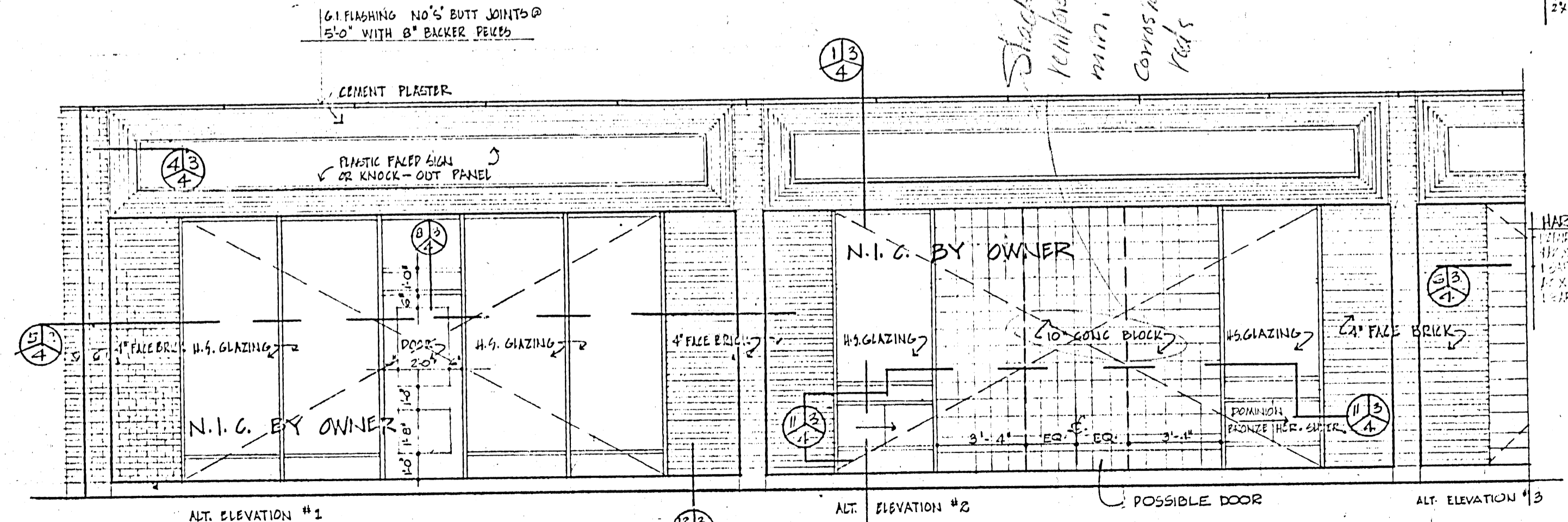
NORTH ELEVATION
SCALE 1/16" = 1'-0"



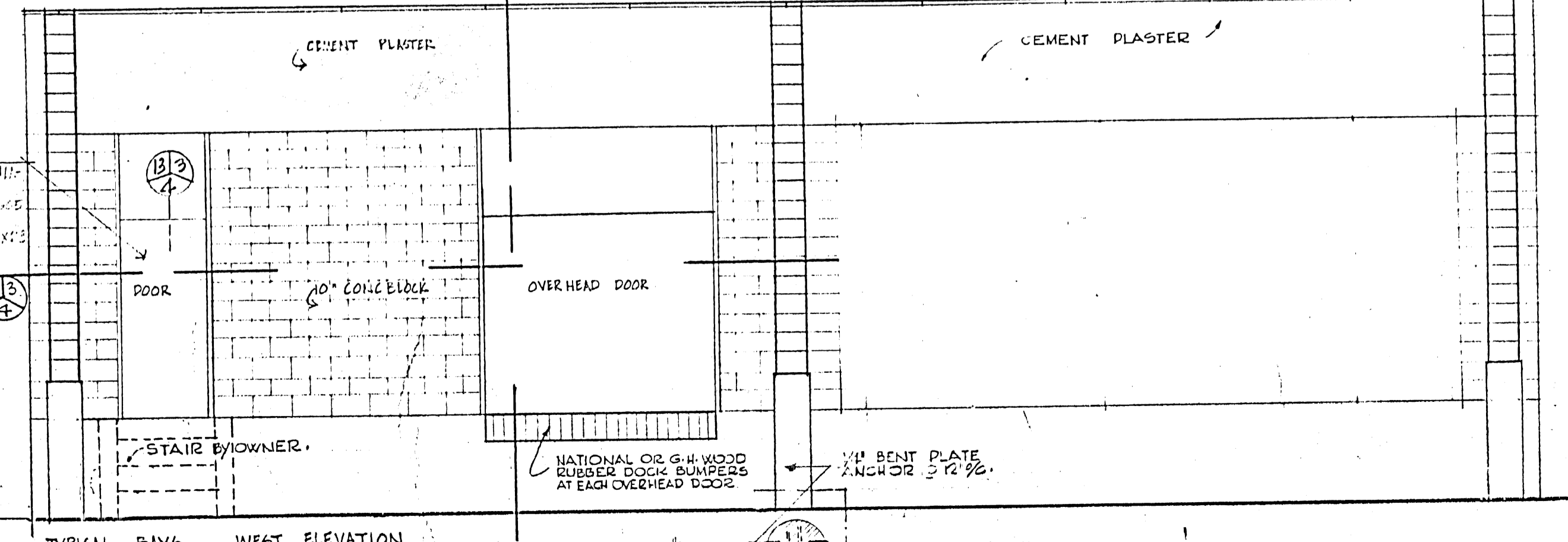
TYPICAL LAVATORY PLAN (N.I.C.)
SCALE 1/4" = 1'-0"



CROSS SECTION
SCALE: 1/2" = 1'-0"



TYPICAL BAYS - EAST ELEVATION
SCALE 1/4" = 1'-0"



TYPICAL BAYS - WEST ELEVATION
SCALE 1/4" = 1'-0"

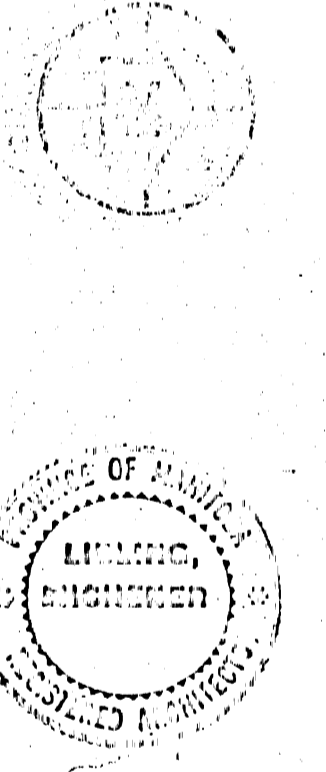
No.	PARTICULARS	DATE	BY
REVISIONS			

CHECKED FOR
DESIGN
DETAILS
STRUCTURE
MECHANICAL
ELECTRICAL

PRINTING DATE

JUN 20 1936

DRAWN BY: SSB



Drawings and specifications, as instruments of service are the property of the architect, the copyright in the same being reserved to them. No reproduction may be made without the permission of the architect, and when made, must bear their names. All prints to be returned. The contractor is to verify dimensions and data noted herein with conditions on the site and is held responsible for reporting any discrepancy to the architect for adjustment. This drawing is not to be used for building purposes until countersigned by:

L. J. McMillan

LIDLING MCHENER & ASSOCIATED ARCHITECTS
222 Main Street, Winnipeg 3, Manitoba, Telephone W2111111 2-4121

ST. JAMES PLACE WAREHOUSE
ST. JAMES MANITOBA