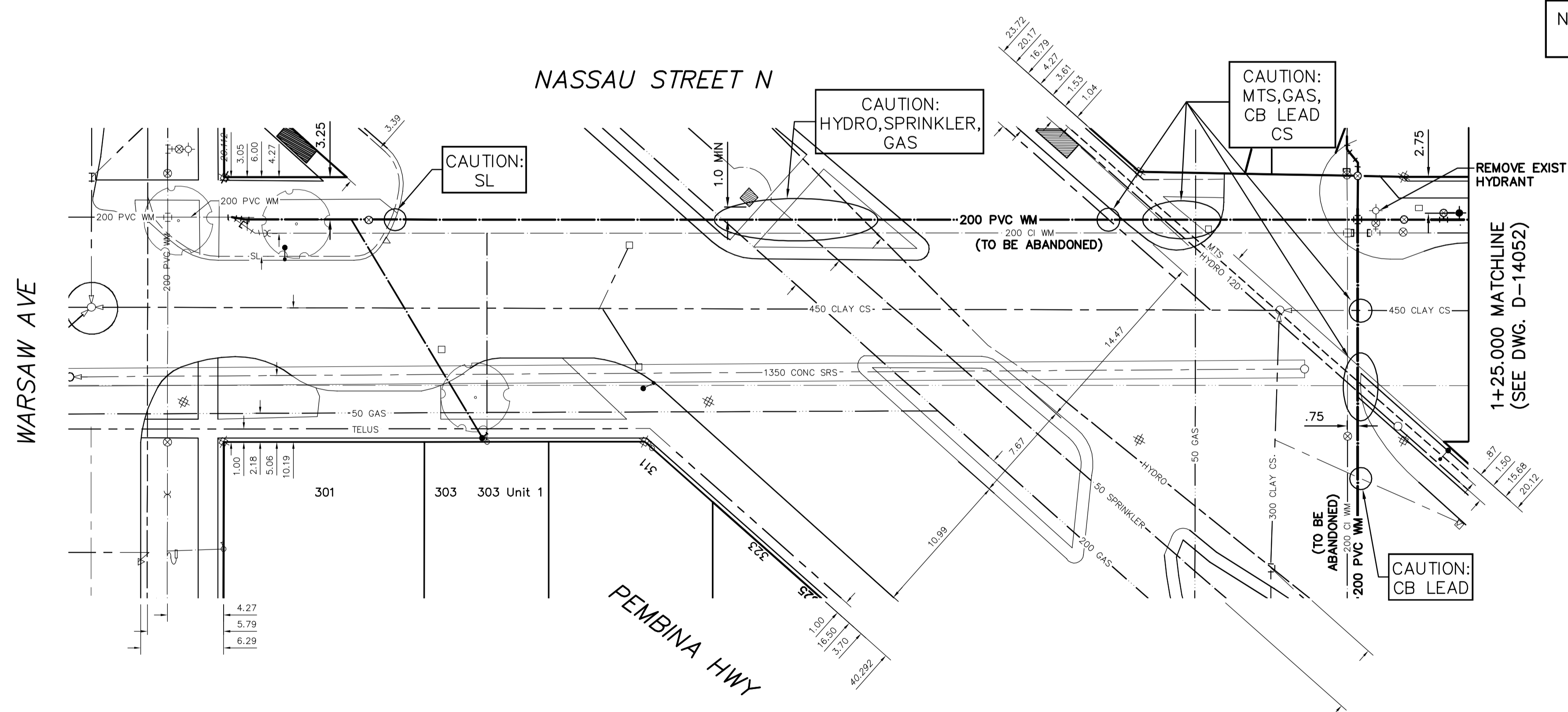
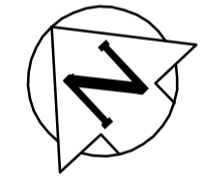


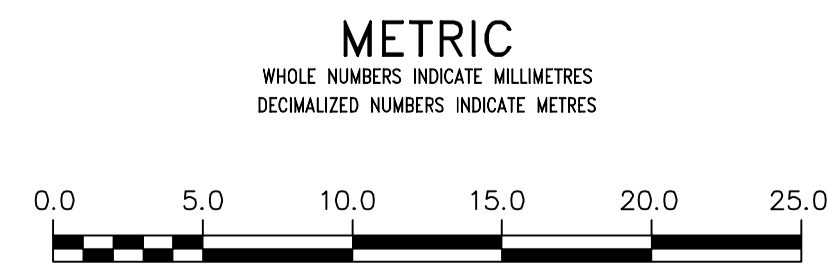
NOTE: CHAINAGES SHOWN ARE ALONG N. R. OF NASSAU AVE N.



WATER SERVICE INFORMATION					
ADDRESS	SIZE (mm) MATERIAL (STREET)	SIZE (mm) MATERIAL (PROP.)	SHORT & LONG MEASUREMENT	CORP. LOCATION	REMARKS
* 303 NASSAU AVE N	20 CU	20 CU	3.74 MEL HSE	OPP OF S/C	RENEW TO R W/25 CU
RESIDENTIAL	-	-	12.001 WML PEMBINA HWY	-	RENEW TO R W/20 CU
COMMERCIAL	-	-	-	-	-

* SERVICES TO BE RENEWED TO R. ALL OTHERS TO BE RECONNECTED

FOR INDEX (SEE D-14045)



WARNING
 IF POWER EQUIPMENT OR EXPLOSIVES ARE TO BE USED FOR EXCAVATION ON THIS PROJECT THE CONTRACTOR MUST:
 1) NOTIFY THE GAS COMPANY OF THE PROPOSED LOCATION OF EXCAVATION.
 2) TAKE PRECAUTION TO AVOID DAMAGE TO GAS COMPANY INSTALLATIONS.
 SEE PROVINCIAL REGULATION 210/72 FOR DETAILS

LOCATION APPROVED UNDERGROUND STRUCTURES
 SUPV. U/G STRUCTURES COMMITTEE DATE
 NOTE:
 LOCATION OF UNDERGROUND STRUCTURES AS SHOWN ARE BASED ON THE BEST INFORMATION AVAILABLE BUT NO GUARANTEE IS GIVEN THAT ALL EXISTING UTILITIES ARE SHOWN OR THAT THE GIVEN LOCATIONS ARE EXACT. CONFIRMATION OF EXISTENCE AND EXACT LOCATION OF ALL SERVICES MUST BE OBTAINED FROM THE INDIVIDUAL UTILITIES BEFORE PROCEEDING WITH CONSTRUCTION.

B.M. ELEV.	NO.	REVISIONS	DATE	BY

DESIGNED BY	MK	CHECKED BY	SC
DRAWN BY	RS	APPROVED BY	SC
SCALE:	HORIZONTAL 1:250	RELEASED FOR CONSTRUCTION	
	VERTICAL 1:50		
DATE	2015 07 23	DATE	
PLOT DATE:	2015 07 23		

ENGINEER'S SEAL
 ORIGINAL SIGNED BY
 S.J.R. COURNOYER
 15/07/23
 CONSULTANT DRAWING NUMBER

THE CITY OF WINNIPEG
 WATER AND WASTE DEPARTMENT
 ENGINEERING DIVISION

2015 SUPPLEMENTAL WATERMAIN RENEWALS
 CONTRACT 14
NASSAU AVENUE NORTH
 WARSAW STREET TO
 2 E OF PEMBINA HIGHWAY

SHEET 7 OF 11
 CITY DRAWING NUMBER
 D-14051