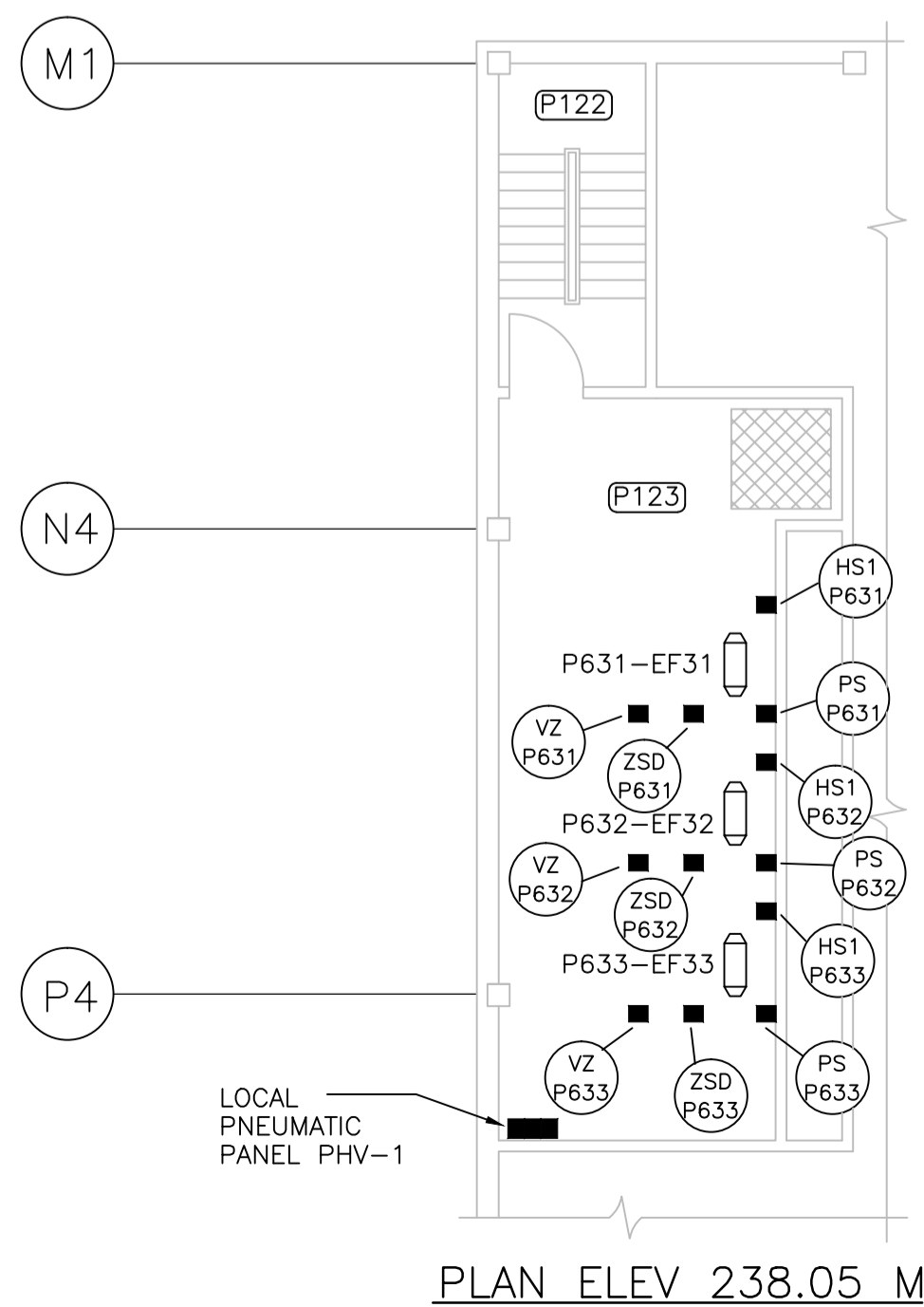


PRIMARY CLARIFIERS 1 & 2 ELEVATION 234.39 M



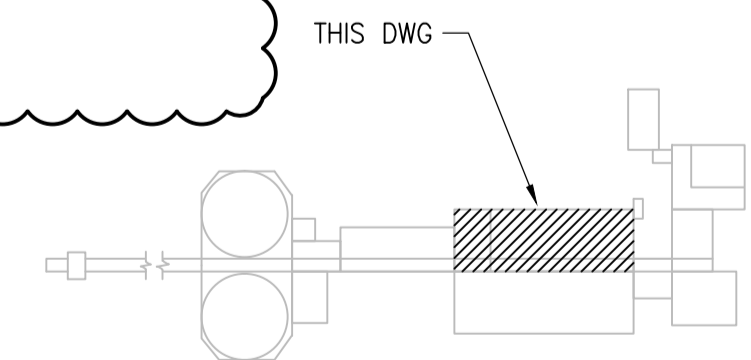
PLAN ELEV 238.05 M

SPECIFIC NOTES

1. RELOCATE SUMP PUMP DISCONNECT SWITCH, AWAY FROM NEW STAIRWELL DOORWAY. EXTEND WIRING AND CONDUIT AS REQUIRED.
2. RELOCATE STOP SWITCH HSS-P1010 (EXISTING TAG P101-HS1) AWAY FROM NEW STAIRWELL DOORWAY. EXTEND CABLING AND CONDUIT AS REQUIRED.
3. RELOCATE OUTDOOR TEMPERATURE TRANSMITTER TE-P6801, TT-P6801 AWAY FROM LOCATION OF NEW STAIRWELL. EXTEND WIRING AND CONDUIT AS REQUIRED.
4. PROVIDE NEW JUNCTION BOX FOR PARKING LOT POWER. MOUNT NEAR CEILING AWAY FROM NEW STAIRWELL DOORWAY. ISOLATE WIRING AND MAKE SAFE. JUNCTION BOX SHALL BE CLASS 1 ZONE 2 AND CATEGORY 2 WET RATED. MARK J.B WITH SOURCE, AND WITH A DESCRIPTION LAMACOID.
5. RELOCATE CLARIFIER 1 & 2 NORTHEAST DOOR SWITCH TO NEW STAIRWELL. EXTEND WIRING AND CONDUIT AS REQUIRED.

GENERAL NOTES

1. THE PRIMARY CLARIFIER AREA IS A CLASS 1, ZONE 2 AND CATEGORY 2 WET LOCATION. WIRING METHODS AND DEVICES SHALL COMPLY WITH THE CEC AND SPECIFICATION REQUIREMENTS.
2. ALL WIRING SHALL BE RUN IN RIGID, THREADED ALUMINIUM CONDUIT.



KEY PLAN
N.T.S.

SNC-LAVALIN		SNC-LAVALIN INC. 148 Notre Dame West Winnipeg, Manitoba Canada R3P 0X7	
DESIGNED: V. ELIMBAN	APPROVED: D. BECKER	DATE: 2014/04/17	REV. -
CHECKED: D. BECKER	SUBJ: 47 DD	SERIAL: -	REV. -
PROJECT NO: 614099	SUBJ: 0000	SERIAL: 47 DD	REV. -

B.M. ELEV.	MaCLAREN ENGINEERS INC. WARDROP ENGINEERING INC. ENGINEERING CONSULTANTS	DESIGNED BY: W.L.	CHECKED BY:	PRELIMINARY NOT FOR CONSTRUCTION	THE CITY OF WINNIPEG WORKS AND OPERATIONS DIVISION WATERWORKS, WASTE & DISPOSAL DEPARTMENT	SOUTH END WATER POLLUTION CONTROL CENTRE	CITY DRAWING NUMBER
2	ISSUED FOR TENDER	08/15	VVE				
1	AS CONSTRUCTED	05/91	B.T.	HOR. SCALE: 1:100	RELEASED FOR CONSTRUCTION:	PRIMARY CLARIFIERS 1 & 2	SEP-284
0	ISSUED FOR TENDER	08/89	B.T.	VERTICAL:	DATE	MAIN FLOOR PLAN	
-	ISSUED FOR APPROVAL	06/89	B.T.	DATE	DATE		
NO. REVISIONS	DATE	BY	DATE	FEBRUARY 1989	DATE		
				CONSULTANT DRAWING NO.	870012-01-16-E110		