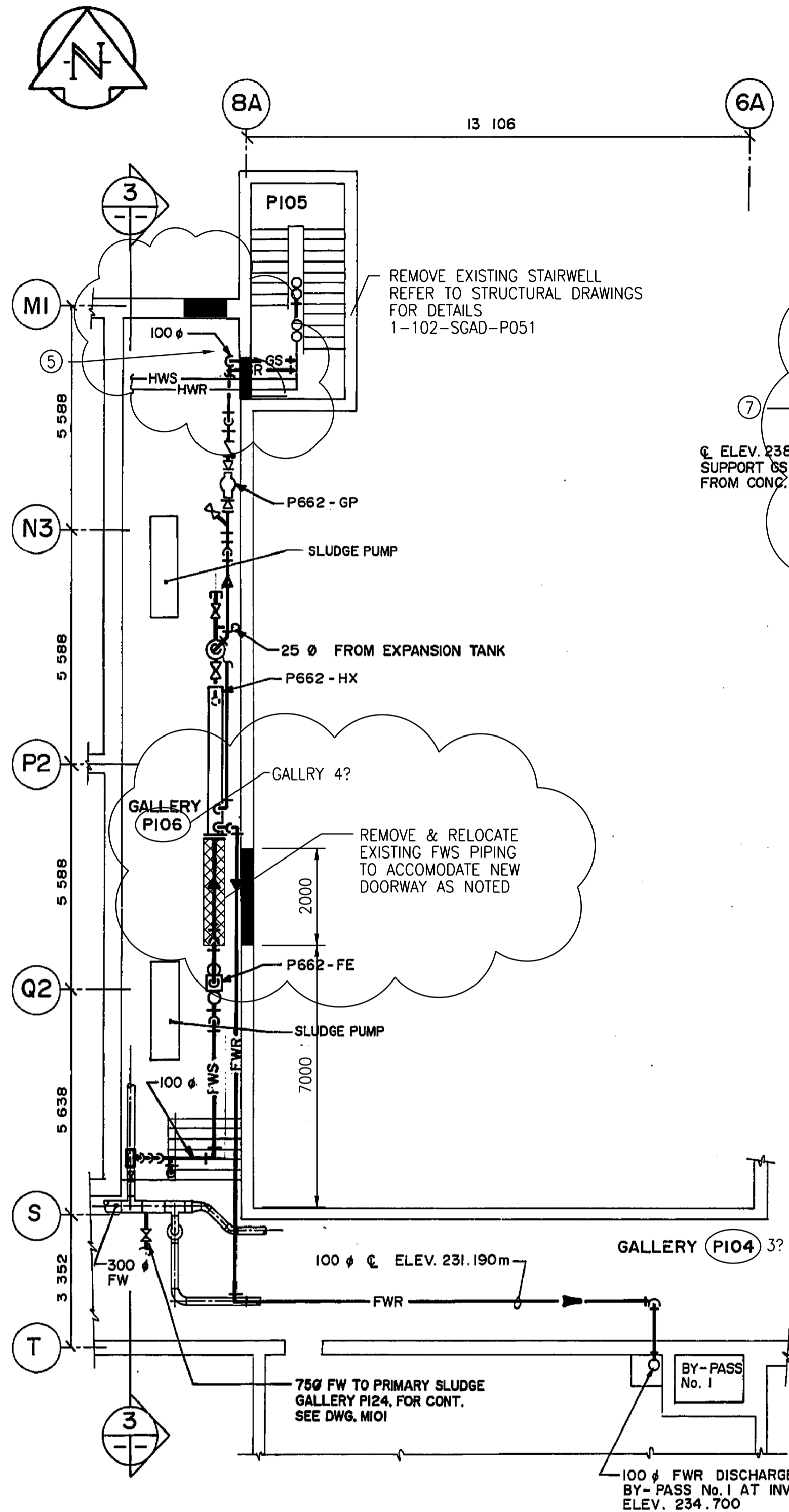
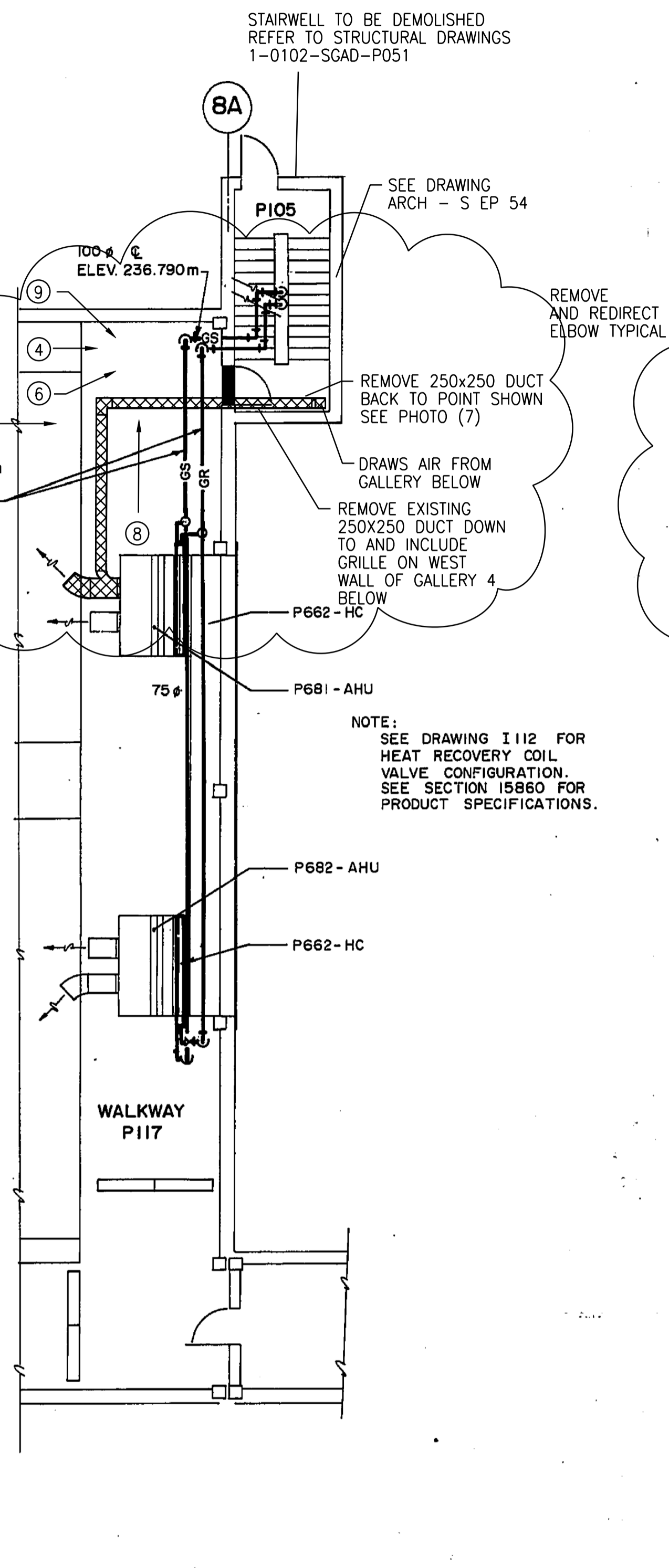


A1 SIZE - 594mm x 841mm

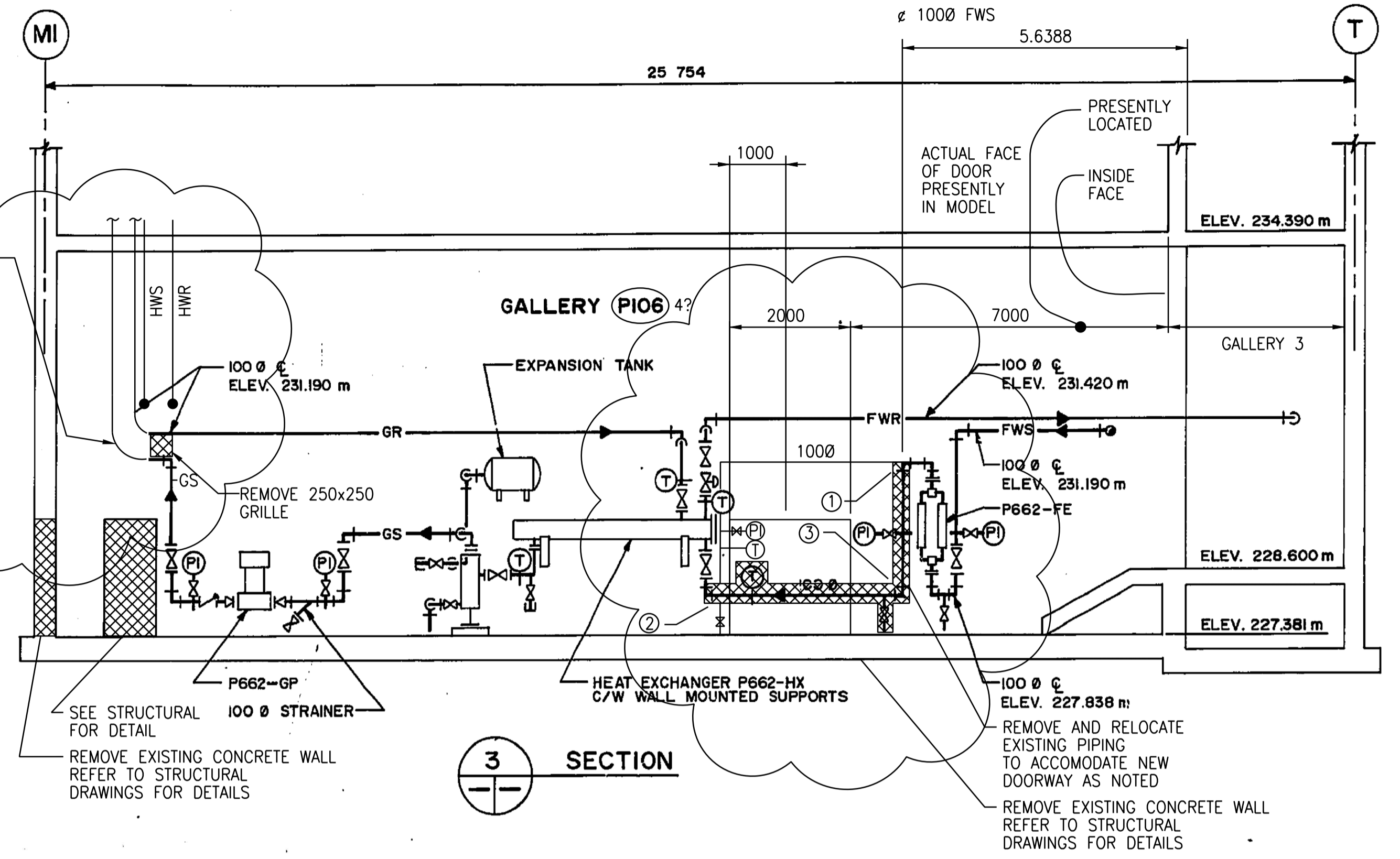
©CH2M HILL 2015. ALL RIGHTS RESERVED.



1 PARTIAL PLAN ELEV. 227.381m



2 PARTIAL PLAN ELEV. 234.390m

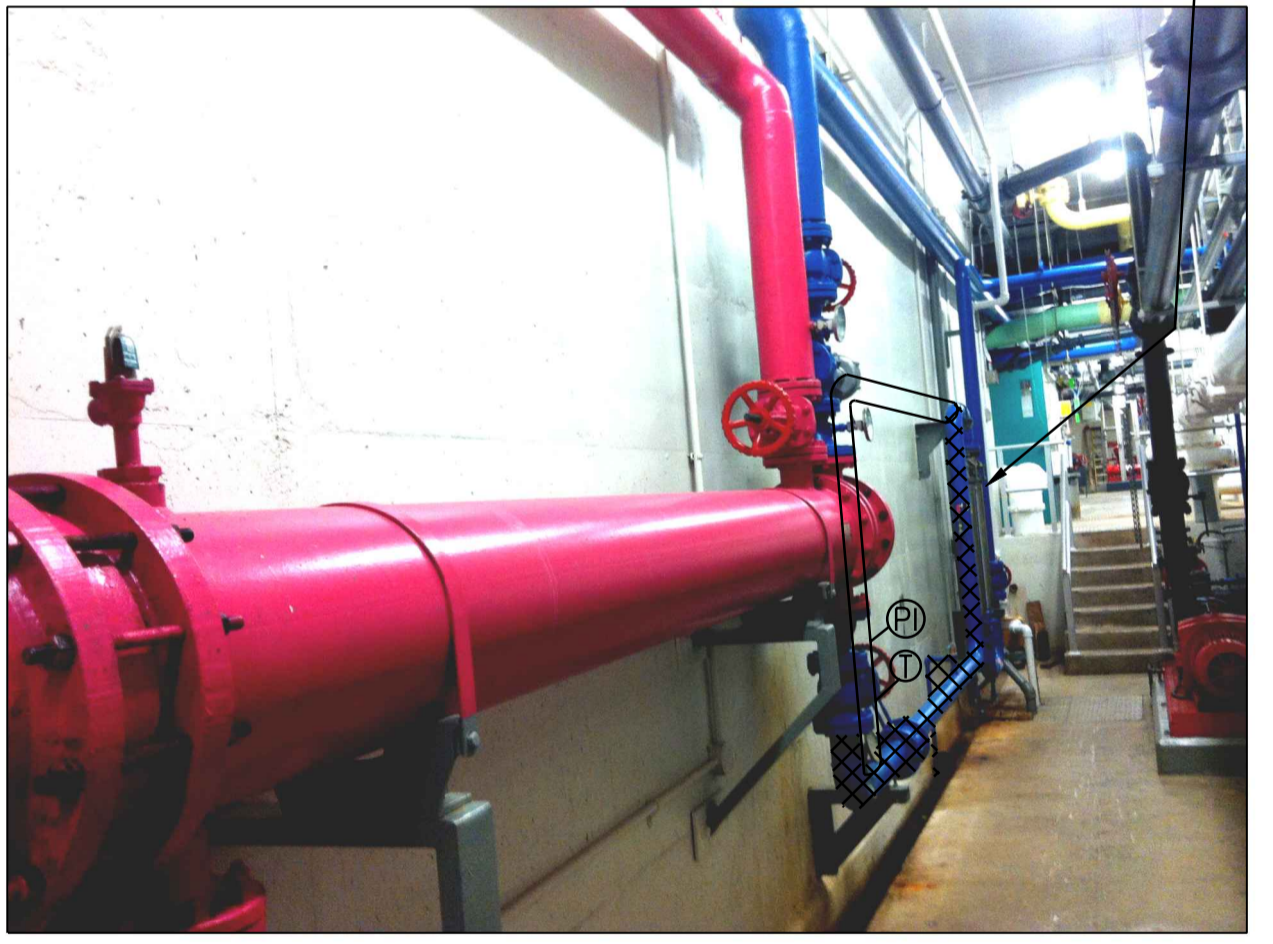


3 SECTION



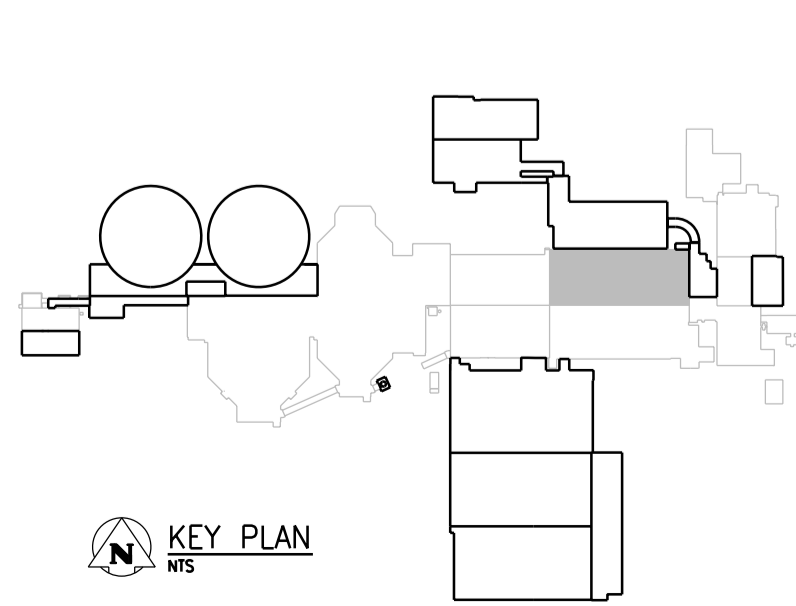
1 PHOTO
REMOVE 100-FSW-CS01 AS INDICATED CLEAN AND PREP SURFACE WELD AND REROUTE AS SHOWN

1 PHOTO
NTS



REMOVE AND REPLACE EXISTING 100-FWS PIPING TO ACCOMMODATE NEW ACCESS DOORWAY TO GRIT PIPE GALLERY

2 PHOTO
NTS



LEGEND
 (X) - DENOTES PHOTO NUMBER SEE DWG 4-0102-MGAD-P001 FOR PHOTOS 3-9

PLANS AND SECTION
NTS

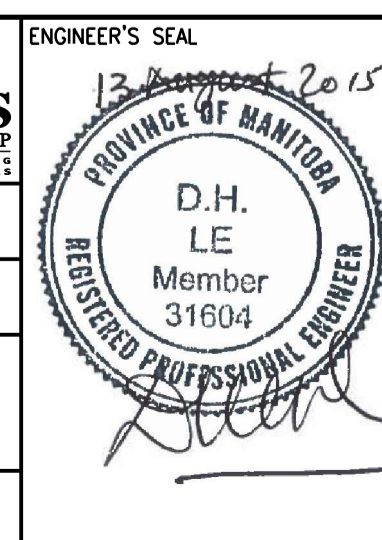
APEGM
 Certificate of Authorization
 CH2M HILL Canada Ltd.
 No. 1441

NO.	REVISIONS	DATE	DESIGN	CHECK
00	ISSUED FOR TENDER	08/2015	K.F.	J.C.

CH2MHILL.
 SNC-LAVALIN
 DESIGNED BY: B COOPER
 DRAWN BY: B COOPER
 SCALE: NTS
 DATE: 2015/08/13

CHECKED BY: T. TRAN
 APPROVED BY: D. LE
 ISSUED FOR CONSTRUCTION BY: T. TURZAK
 DATE: 2015/08/13

CONSULTANT NO.: 474248



SEALING ARCHITECT OR ENGINEER ACCEPTS RESPONSIBILITY ONLY FOR AREAS IDENTIFIED BY CLOUDING ON THIS DRAWING.

NOTE: THIS DRAWING SUPERSEDES DRAWING SEP-268

THE CITY OF WINNIPEG
 WATER AND WASTE DEPARTMENT

SOUTH END WATER POLLUTION CONTROL CENTRE
 SEWPPC UPGRADING/EXPANSION PROJECT
 MECHANICAL
 PRIMARY CLARIFIERS
 PARTIAL PLANS AND SECTION

DRAWING NUMBER: 1-0102-MGAD-P051
 SHEET: 00
 REV: A1
 SIZE: A1