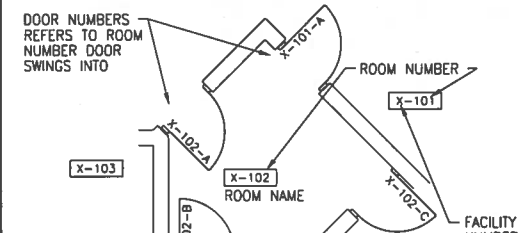


GENERAL ARCHITECTURAL NOTES

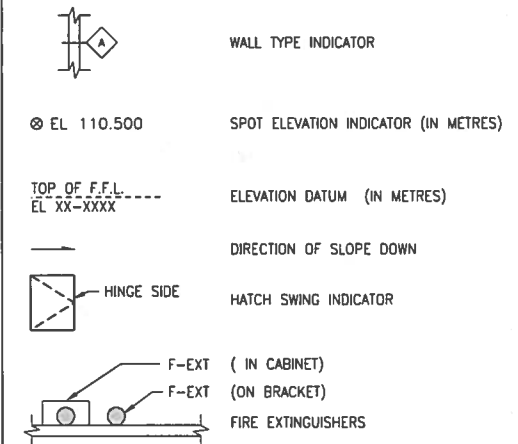
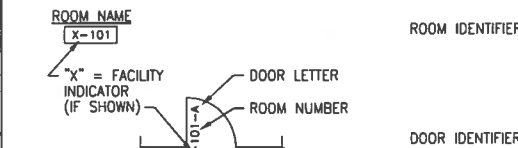
- FOR LOCATION OF EQUIPMENT BASES, SEE MECHANICAL, ELECTRICAL, PROCESS AND STRUCTURAL DRAWINGS. CARRY FLOOR FINISHES UP AND OVER EQUIPMENT BASES TO SUIT EQUIPMENT SUPPLIED.
- FOR LOCATION OF ADDITIONAL ROOF PENETRATIONS (SUCH AS VENTS, CONDUITS ETC.) SEE MECHANICAL, ELECTRICAL, PROCESS DRAWINGS AND SPECIFICATIONS.
- PROVIDE CONTROL JOINTS IN CERAMIC TILES AT MAXIMUM 5 METRES O.C., AROUND COLUMNS, EQUIPMENT BASES, AND AROUND PERIMETER OF ROOMS.
- REFER TO MECHANICAL, ELECTRICAL AND PROCESS DRAWINGS FOR ADDITIONAL PENETRATIONS IN MASONRY WALLS. PROVIDE LINTELS OVER ALL OPENINGS AS DETAILED ON DRAWINGS. DESIGN LINTELS AS PER REQUIREMENT OF THE NATIONAL BUILDING CODE OF CANADA 2010.
- ALL LOOSE STEEL LINTELS ARE TO BE HOT DIPPED GALVANIZED, UNLESS NOTED OTHERWISE, WITH MINIMUM 200 mm BEARING AT EACH END. PROVIDE BOND BREAKER ON FULL BEARING SURFACE UNDER LOOSE LINTELS. LINTELS THAT ARE NOT INDICATED OR DETAILED, ARE TO BE DESIGNED AS PER REQUIREMENTS OF NATIONAL BUILDING CODE OF CANADA 2010.
- ALL MASONRY OPENINGS UP TO 3 METRE WIDE ARE TO RECEIVE LINTEL BLOCKS AS DETAILED IN STRUCTURAL DRAWINGS.
- REINFORCE ALL MASONRY AS PER DETAILS ON STRUCTURAL DRAWINGS.
- PROVIDE CONTROL JOINTS AT LOCATIONS INDICATED ON DRAWINGS AND AT 6000mm MAXIMUM.
- PROVIDE INSULATED ALUMINUM BLANK OFF PANELS BEHIND UNUSED PORTIONS OF LOUVERS (SEE HVAC AND LOUVER SCHEDULES FOR EXTENT AND LOCATION).
- UNLESS OTHERWISE INDICATED, PLAN DIMENSIONS ARE TO COLUMN GRID ON CENTERLINES, NOMINAL SURFACE OF MASONRY, FACE OF STUDS AND FACE OF CONCRETE WALLS.
- "FLOOR ELEVATION" REFERS TO TOP OF CONCRETE SLABS. FINISH FLOORING IS INSTALLED ABOVE THE FLOOR LINE. FOR DEPRESSED FLOORS AND CURBS, SEE STRUCTURAL DRAWINGS.
- REPETITIVE FEATURES ARE NOT DRAWN IN THEIR ENTIRETY AND SHALL BE COMPLETELY PROVIDED AS IF DRAWN IN FULL.
- LINE OF EXISTING GRADES, AS SHOWN ON THE BUILDING ELEVATIONS AND SECTIONS ARE APPROXIMATE. THEY ARE AT THE BUILDING FACE, OR ON THE SECTION END EXCEPT AS NOTED.
- VERIFY ALL ROUGH-IN DIMENSIONS FOR EQUIPMENT PROVIDED IN THIS CONTRACT, OR BY OTHERS.
- FOR EXTENT OF CHEMICAL RESISTANT COATINGS (CRC), REFER TO ARCHITECTURAL DRAWINGS.
- CARRY CHEMICAL RESISTANT COATING UP AND OVER CONTAINMENT WALLS AND EQUIPMENT BASES PRIOR TO INSTALLATION OF CHEMICAL HOLDING TANKS AND ANCILLARY EQUIPMENT.
- DIMENSIONS, ELEVATIONS AND DETAILS OF EXISTING STRUCTURES ARE BASED ON PREVIOUS CONTRACT DOCUMENTS. VERIFY ALL INFORMATION ON SITE PRIOR TO COMMENCEMENT OF CONSTRUCTION.
- FOR EXTENT OF CEMENTITIOUS WATERPROOFING, REFER TO STRUCTURAL AND ARCHITECTURAL DRAWINGS.
-
- FOR ABBREVIATIONS, SEE GENERAL ABBREVIATION DRAWINGS.

ARCHITECTURAL LEGEND

ROOM NAME & NUMBER



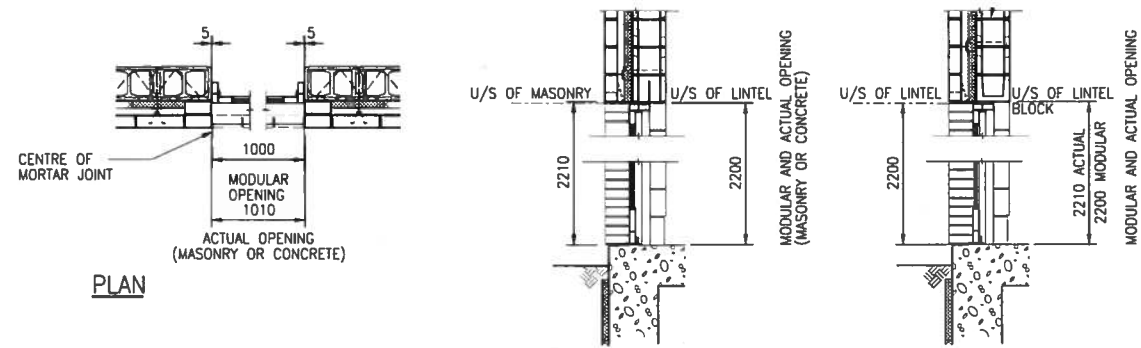
PLANS



ARCHITECTURAL MATERIAL SYMBOLS

SYMBOL	LEGEND	SYMBOL	LEGEND
	GRATING		METAL STUD WALL (PLAN)
	CHECKERED PLATE		WOOD STUD WALL (PLAN)
	GROUT		RIGID INSULATION CAVITY WALL INSULATION OR PERIMETER INSULATION
	GRANULAR FILL		BATT INSULATION (MINERAL WOOL OR FIBREGLASS)
	EARTH OR FINISH GRADE		STEEL
	CONCRETE		ALUMINUM
	CMU WALL (PLAN)		PLYWOOD
	CMU WALL (SECTION)		GYPSUM WALLBOARD
	FACE BRICK		ACOUSTICAL TILE
	STONE		WOOD BLOCKING
			FINISHED LUMBER

MODULAR MASONRY DIMENSIONING



MODULAR DIMENSIONING PHILOSOPHY

UNLESS OTHERWISE NOTED: ALL DIMENSIONS ON DRAWINGS ARE INDICATED AS MODULAR.

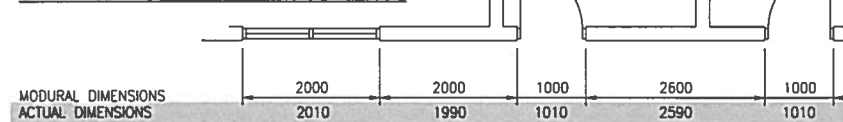
EXAMPLE:

FOR HORIZONTAL OPENINGS, IF AN OPENING IS DIMENSIONED AS 1000, THE ACTUAL OPENING IS 1010, TO COMPENSATE FOR ADDITIONAL 10mm MORTAR JOINT. THE CONCRETE OPENING WOULD ALSO NEED BE 1010.

VERTICAL OPENINGS FOR EXTERIOR CMU OR CONCRETE (MODULAR AND ACTUAL) ARE SIMILAR, THAT IS, A MODULAR OPENING OF 2200 IS ACTUALLY 2210.

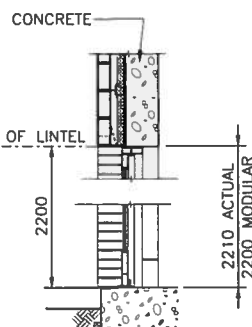
VERTICAL OPENINGS FOR INTERIOR CMU LINTEL BLOCKS OR CONCRETE (MODULAR AND ACTUAL) ARE SIMILAR, THAT IS, A MODULAR OPENING DIMENSIONED AS 2200 IS ACTUALLY 2210. WHEN USING STEEL LINTELS FOR BOTH WYTHES, THEN THE ACTUAL OPENING WILL BE 2200

EXAMPLE FOR MASONRY OPENINGS



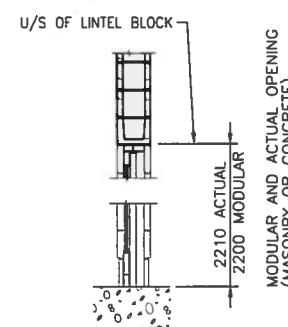
EXTERIOR OPENINGS WITH STEEL LINTEL

EXTERIOR OPENINGS WITH CMU LINTEL BLOCK

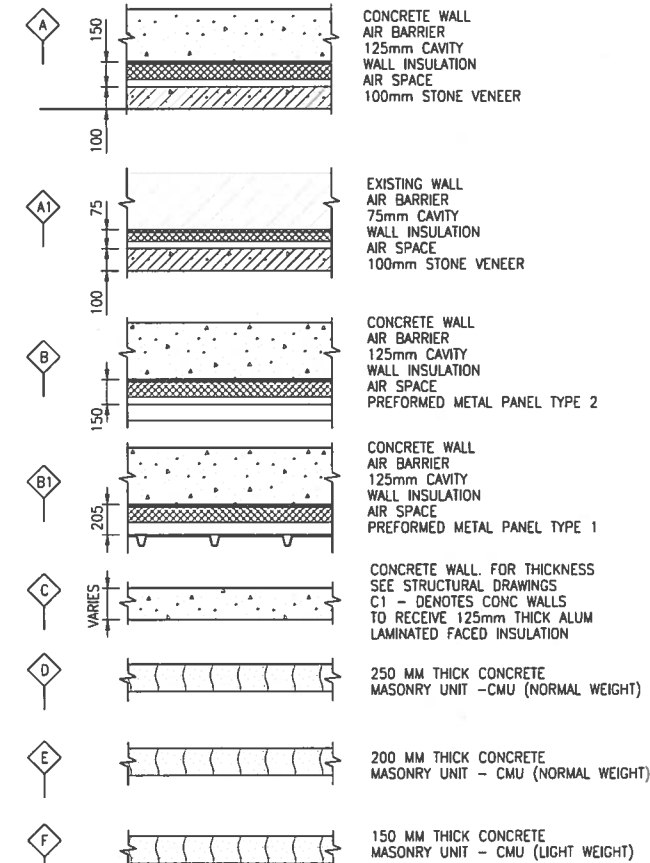


EXTERIOR OPENINGS WITH CONCRETE BACK-UP

INTERIOR OPENINGS



WALL TYPES LEGEND



NO.	REVISIONS	DATE	DESIGN	CHECK
00	ISSUED FOR TENDER	08/2015	N.B. J.C.	

CH2MHILL CANADA Architects Inc.		ENGINEER'S SEAL	
DESIGNED BY: R. ZAKKO	CHECKED BY: B. KOLIS-HUPA		
DRAWN BY: J. LIN	APPROVED BY: R. ZAKKO		
SCALE: NTS	ISSUED FOR CONSTRUCTION By: T. TURZAK		
DATE: 2015/08/13	DATE: 2015/08/13		
CONSULTANT NO.: 474248			

THE CITY OF WINNIPEG WATER AND WASTE DEPARTMENT	
SOUTH END WATER POLLUTION CONTROL CENTRE SEWPCC UPGRADING/EXPANSION PROJECT BUILDING LEGEND AND GENERAL NOTES	
CITY DRAWING NUMBER 1-0102-BDTL-A001	SHEET REV. SIZE 00 A1