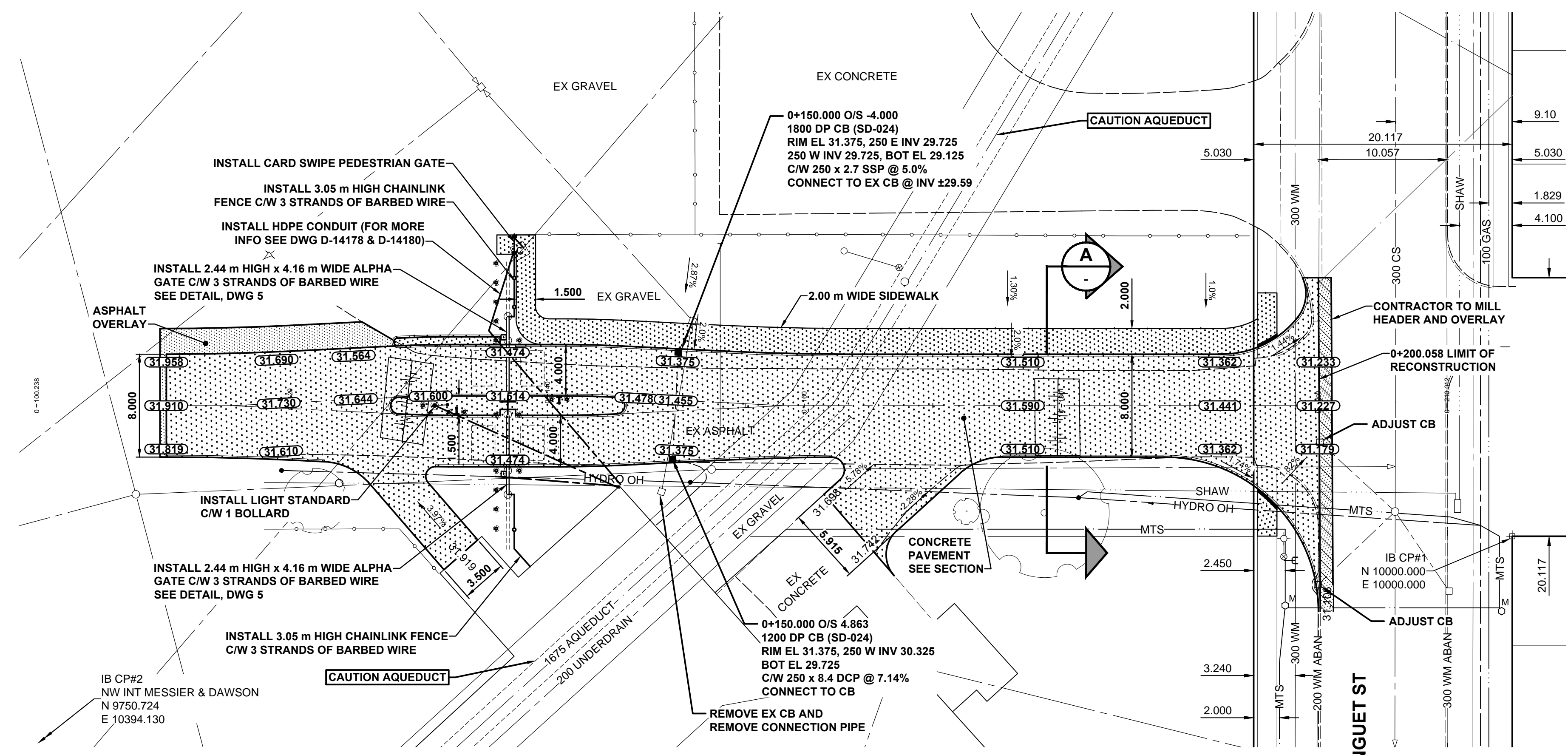
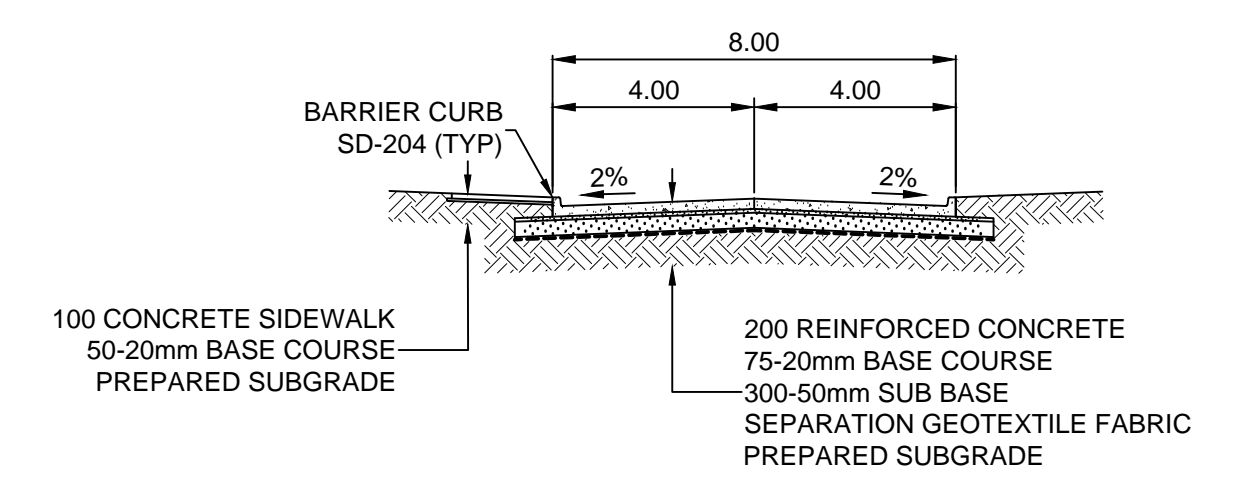
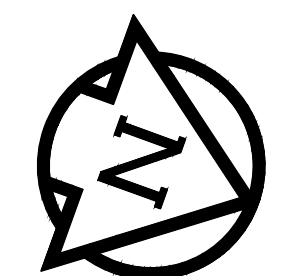
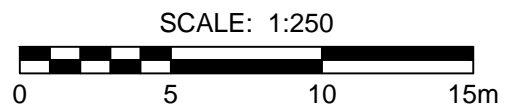


ANSI D - 22 x 34 (559mm x 864mm)

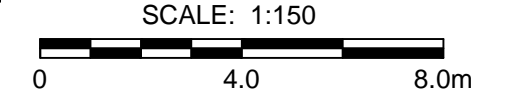
M:\Proj\W130024\Drawings\CONSTRUCTION\DRAWINGS\W130024-PL-04.dwg Rev: 12/20/2016 11:55 AM by: Kevin Barard Plot: 2/1/2016 11:45 AM by: Kevin Barard



PLINGUET YARD - PLINGUET ACCESS - SITE PLAN

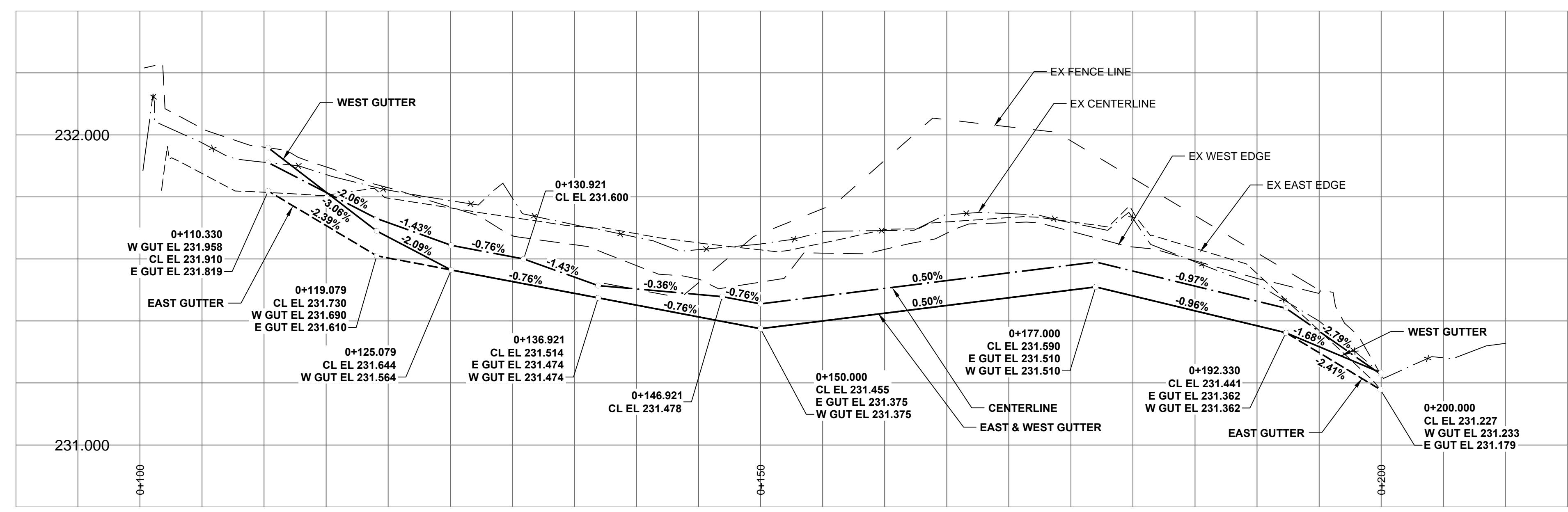
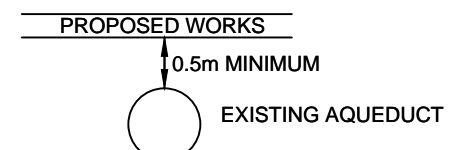


ROAD SECTION

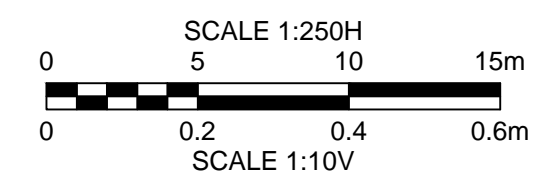


NOTES:

- ALL PAVEMENT DIMENSIONS ARE TO BACK OF CURB.
- CONTACT THE WATER AND WASTE DEPARTMENT'S CONSTRUCTION SERVICES COORDINATOR AT 204-986-4289, 7 DAYS PRIOR TO THE COMMENCEMENT OF CONSTRUCTION TO ARRANGE FOR AN INSPECTION.
- PRIOR TO ANY CONSTRUCTION, THE AQUEDUCT MUST BE EXPOSED BY A SOFT DIG METHOD SO AS TO CONFIRM DEPTH AND LOCATION.
- A MINIMUM CLEARANCE OF 0.5m MUST BE PROVIDED BETWEEN THE UNDERSIDE OF THE PROPOSED WORKS AND THE TOP ANY EXISTING AQUEDUCT BY TRENCHLESS OR OPEN TRENCH.
- DO NOT OPERATE VIBRATORY EQUIPMENT OVER OR WITHIN 3.0m OF THE AQUEDUCT CENTERLINE.
- CONCRETE DEMOLITION AND REMOVAL WITHIN 3 METERS HORIZONTALLY OF THE AQUEDUCT SHALL BE COMPLETED BY SAWCUTTING AND REMOVAL, OR BY THE USE OF HAND HELD JACKHAMMERS. USE OF MACHINE MOUNTED CONCRETE BREAKERS ABOVE THE AQUEDUCT SHALL NOT BE PERMITTED.
- ADD 200.000m TO ABBREVIATED ELEVATIONS TO OBTAIN GEODETIC ELEVATIONS.



ROAD PROFILE



LOCATION APPROVED UNDERGROUND STRUCTURES

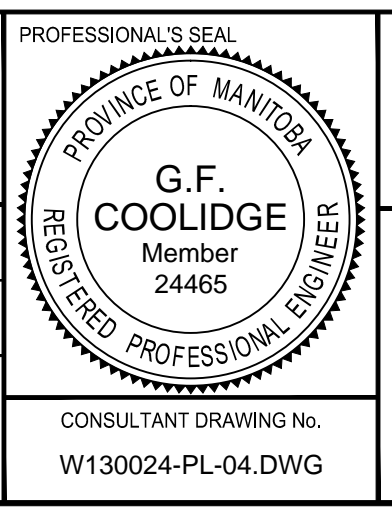
SUPR. U/G STRUCTURES COMMITTEE	DATE

**NOTE:** LOCATION OF UNDERGROUND STRUCTURES AS SHOWN ARE BASED ON THE BEST INFORMATION AVAILABLE BUT NO GUARANTEE IS GIVEN THAT ALL EXISTING UTILITIES ARE SHOWN OR THAT THE GIVEN LOCATIONS ARE EXACT. CONFIRMATION OF EXISTENCE AND EXACT LOCATION OF ALL SERVICES MUST BE OBTAINED FROM THE INDIVIDUAL UTILITIES BEFORE PROCEEDING WITH CONSTRUCTION.

BM 33-002  
ELEV 232.284m  
Tbtl. in S. wall of W. Bldg. Standard Chemical Ltd.,  
681 Plinguet St., 5.8 m W. of S.E. Corner



DESIGNED BY	GFC	CHECKED BY	WRJ
DRAWN BY	DML	APPROVED BY	BWB
ISSUED FOR TENDER	16/02/05	GFC	
ISSUED FOR REVIEW	16/01/13	GFC	
ISSUED FOR CLIENT REVIEW	14/07/17	GFC	
REVISIONS	YYMMDD	BY	
DATE	13/11/16	DATE	



BID OPPORTUNITY No. 588-2015

**THE CITY OF WINNIPEG**  
WATER AND WASTE DEPARTMENT  
ENGINEERING DIVISION

**AUTOMATED SECURITY GATES & PAVEMENT WORKS - McPHILLIPS PUMPING STATION & PLINGUET YARD**

**PLINGUET YARD - PLINGUET ACCESS PLAN, PROFILE & SECTIONS**

SHEET 4 OF 13  
CITY DRAWING NUMBER  
**D-14028**

CONSULTANT DRAWING No.  
W130024-PL-04.DWG