

CONSTRUCTION NOTES:

1. LOCATION OF ALL SEWER AND WATER LINES TO BE CONFIRMED IN THE FIELD.
2. SEWER AND WATER SERVICES SHOWN ON DRAWINGS ARE APPROXIMATE ONLY.
3. ALL FITTINGS ON WATERMAIN PIPE REQUIRE RESTRAINING DEVICES.

GENERAL NOTES:

1. CHAINAGE IS ALONG WEST LIMIT OF ALCOTT STREET.
2. SEE SPECIFICATIONS FOR DETAILED TEST HOLE INFORMATION.

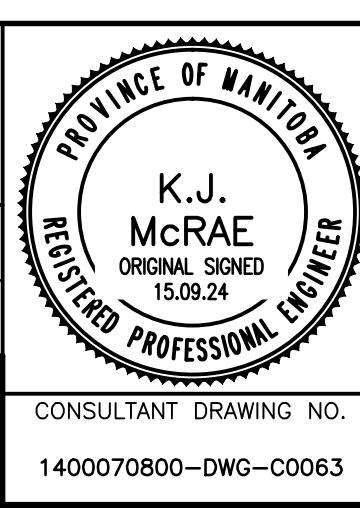


150 WM	WATERMAIN	150 WM	→	SWALE	→	RIGHT-OF-WAY	
400 FM	FEEDERMAIN	400 FM	○	MANHOLE	●	GAS	
300 LDS	LAND DRAINAGE SEWER	300 LDS	□	CATCHBASIN	■	HYDRO	
250 WWS	WASTEWATER SEWER	250 WWS	▣	HYDRO BOX		MTS	
300 CS	COMBINED SEWER	300 CS	●	HYDRO POLE		DETECTABLE WARNING TILE	□
200 FCM	FORCEMAIN	200 FCM	●	LIGHT STANDARD	●	ELEVATION	(32.123)
	JUNCTIONS		+	ANCHOR	⊖	SIDEWALK	▨
	HYDRANT		⊕	TREE	⊕	CURB	▨
	VALVE		⊕	SURVEY BAR	⊕	ASPHALT	▨
	CURB STOP		⊕	SIGNAL CONTROLLER	⊕	CONCRETE	▨
EXISTING	LEGEND-PLAN	PROPOSED	EXISTING	LEGEND-PLAN	PROPOSED	EXISTING	LEGEND-PLAN

LOCATION APPROVED UNDERGROUND STRUCTURES		B.M. ELEV.	
SUPV. U/G STRUCTURES COMMITTEE	DATE		
NOTE: LOCATION OF UNDERGROUND STRUCTURES AS SHOWN ARE BASED ON THE BEST INFORMATION AVAILABLE. BUT NO GUARANTEE IS GIVEN THAT ALL EXISTING UTILITIES ARE SHOWN OR THAT THE GIVEN LOCATIONS ARE EXACT. CONFIRMATION OF EXISTENCE AND EXACT LOCATION OF ALL SERVICES MUST BE OBTAINED FROM THE INDIVIDUAL UTILITIES BEFORE PROCEEDING WITH CONSTRUCTION.			
0	ISSUED FOR TENDER	15.09.24	KJM
NO.	REVISIONS	DATE	BY

TETRA TECH

DESIGNED BY	GWC	CHECKED BY	KJM
DRAWN BY	GMD	APPROVED BY	EFS
HOR. SCALE: 1 : 250		ACCEPTED BY	
VERTICAL: 1 : 50		DATE	
DATE 15.09.24		15.09.24	



THE CITY OF WINNIPEG
PUBLIC WORKS DEPARTMENT
ENGINEERING DIVISION

NESS AVENUE AT STURGEON CREEK BRIDGE CONSTRUCTION

150 WATERMAIN RENEWAL AT ALCOTT STREET & NESS AVENUE

CITY DRAWING NUMBER: P-3465-15-016
SHEET 63 OF 64

CONSULTANT DRAWING NO. 1400070800-DWG-C0063

63