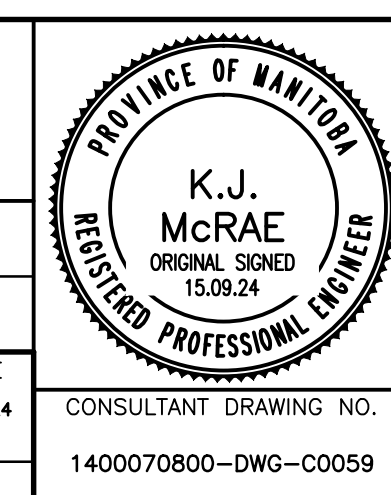


EXISTING	LEGEND-PLAN	PROPOSED	EXISTING	LEGEND-PLAN	PROPOSED	EXISTING	LEGEND-PLAN	PROPOSED
150 WM	WATERMAIN	150 WM	SWALE	RIGHT-OF-WAY	LOCATION APPROVED UNDERGROUND STRUCTURES	B.M. ELEV.		
400 FM	FEEDERMAIN	400 FM	MANHOLE	GAS	SUPV. U/G STRUCTURES COMMITTEE			
300 LDS	LAND DRAINAGE SEWER	300 LDS	CATCHBASIN	HYDRO	DATE			
250 WWS	WASTEWATER SEWER	250 WWS	HYDRO BOX	MTS	NOTE:			
300 CS	COMBINED SEWER	300 CS	HYDRO POLE	DETECTABLE WARNING TILE	LOCATION OF UNDERGROUND STRUCTURES AS SHOWN ARE BASED ON THE BEST INFORMATION AVAILABLE. BUT NO GUARANTEE IS GIVEN THAT ALL EXISTING UTILITIES ARE SHOWN OR THAT THE GIVEN LOCATIONS ARE EXACT. CONFIRMATION OF EXISTENCE AND EXACT LOCATION OF ALL SERVICES MUST BE OBTAINED FROM THE INDIVIDUAL UTILITIES BEFORE PROCEEDING WITH CONSTRUCTION.			
200 FCM	FORCEMAIN	200 FCM	LIGHT STANDARD					
	JUNCTIONS		ANCHOR	SIDEWALK				
	HYDRANT		TREE	CURB				
	VALVE		SURVEY BAR	ASPHALT				
	CURB STOP		SIGNAL CONTROLLER	CONCRETE				

DESIGNED BY	TAP, KJM	CHECKED BY	KJM
DRAWN BY	GMD	APPROVED BY	EF5
HOR. SCALE:	1 : 250	ACCEPTED BY	DATE
VERTICAL:		ORIGINAL DRAWING SIGNED BY: D.N. BURMEY, P.ENG.	15.09.24
0 ISSUED FOR TENDER	15.09.24	D.N. BURMEY, P.ENG. BRIDGE PROJECTS ENGINEER	
NO. REVISIONS	DATE	BY	

**TETRA TECH**

CONSULTANT DRAWING NO. 1400070800-DWG-C0059



**THE CITY OF WINNIPEG**  
PUBLIC WORKS DEPARTMENT  
ENGINEERING DIVISION

**NESS AVENUE AT STURGEON CREEK BRIDGE CONSTRUCTION**

CITY DRAWING NUMBER: P-3465-15-012  
SHEET 59 OF 64

SEWER REPAIRS  
NESS AVENUE  
WHARTON STREET TO HERITAGE BOULEVARD

59