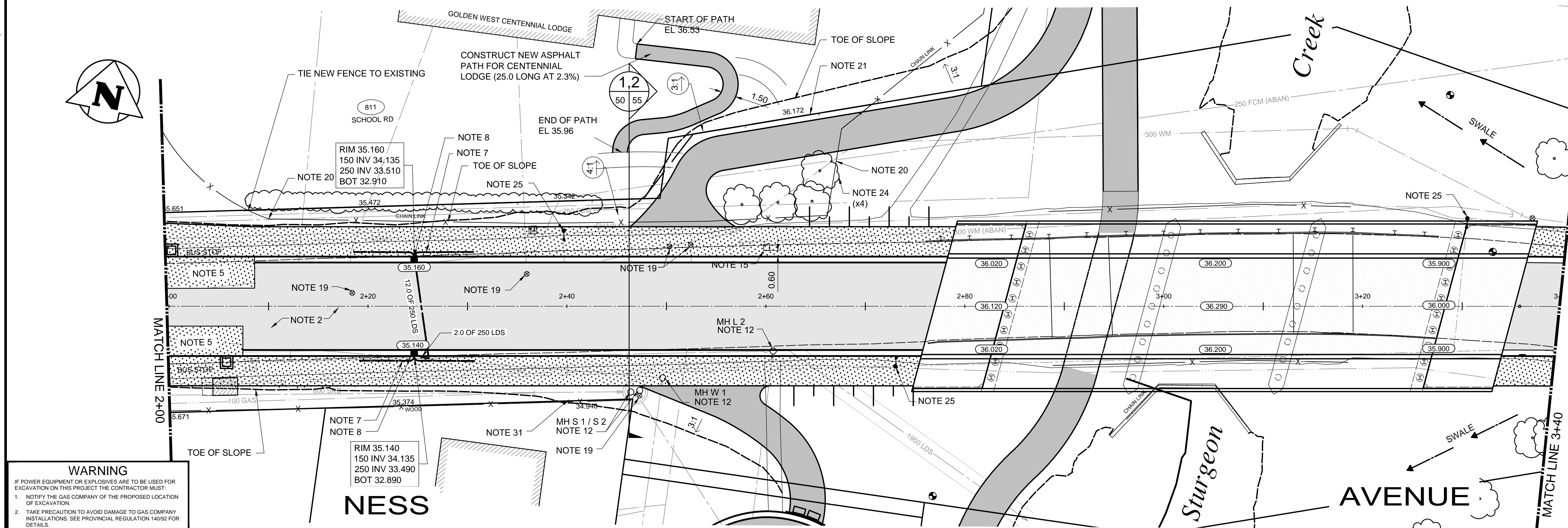


**NESS AVENUE - SCHOOL TO VALLEY VIEW**  
**TYPICAL ROAD RECONSTRUCTION**  
HOR 1 : 150, VER 1 : 75

MANHOLE WORK REQUIRED				
LOCATION	TYPE	RIM	NEW RIM	WORK REQUIRED
MH S 1	SD-10	234.829	235.586	ADJUST MH +0.757
MH S 2	SD-10	234.736	235.601	ADJUST MH +0.865
MH W 3	SD-10	234.716	235.634	ADJUST MH +0.918
MH L 2	SD-10	234.397	235.638	ADJUST MH +1.241

- CONSTRUCTION NOTES:**
- PLANE EXISTING ASPHALT AND CONSTRUCT NEW ASPHALTIC CONCRETE OVERLAY (AVERAGE THICKNESS 80mm).
  - CONSTRUCT NEW FULL DEPTH ASPHALTIC CONCRETE PAVEMENT.
  - REMOVE EXISTING SIDEWALK AND CONSTRUCT NEW 100mm CONCRETE SIDEWALK.
  - RENEW EXISTING BARRIER CURB (AVG 150mm REVEAL HEIGHT).
  - CONSTRUCT 10.0m x 3.0m NEW EXPOSED 230mm REINFORCED CONCRETE PAVEMENT.
  - RENEW EXISTING 100mm CONCRETE SIDEWALK.
  - INSTALL 150mm SUBDRAINS 6.0m ON EACH SIDE OF CATCHBASIN.
  - INSTALL NEW CURB AND GUTTER INLET C/W CATCHBASIN (SD-024) AND CONNECT NEW 250mm LEAD TO EXISTING LAND DRAINAGE SEWER.
  - INSTALL NEW DETECTABLE WARNING SURFACE TILES.
  - INSTALL NEW CURB AND GUTTER INLET C/W CATCHPIT (SD-023) AND CONNECT NEW 250mm LEAD TO EXISTING CATCHBASIN.
  - REPLACE COVER WITH SOLID COVER.
  - ADJUST MANHOLE TO GRADE.
  - RENEW EXISTING MODIFIED BARRIER CURB (AVG 100mm REVEAL HEIGHT).
  - INSTALL NEW CURB RAMP.
  - REMOVE EXISTING CATCHBASIN.
  - CONSTRUCT NEW MODIFIED BARRIER CURB AND GUTTER (180mm REVEAL HEIGHT).
  - CONSTRUCT NEW BARRIER CURB AND GUTTER (180mm REVEAL HEIGHT).
  - REMOVE EXISTING CATCHPIT.
  - ADJUST EXISTING WATERMAIN VALVE BOX TO GRADE.
  - REMOVE EXISTING CHAIN LINK FENCE.
  - INSTALL 1.22m HIGH CHAIN LINK FENCE.
  - REMOVE AND REPLACE EXISTING MANHOLE RISERS.
  - REMOVE EXISTING ENTRANCE MARKERS. SALVAGE SIGNAGE.
  - REMOVE TREE.
  - STREET LIGHTING TO BE RELOCATED BY OTHERS.
  - INSTALL NEW BOULEVARD CATCHBASIN (SD-025) AND CONNECT LEAD TO EXISTING MANHOLE.
  - RELOCATE MTS PEDESTAL (BY OTHERS)
  - REMOVE EXISTING PAVEMENT AND CONSTRUCT NEW 230mm REINFORCED CONCRETE PAVEMENT.
  - REMOVE TREE.
  - INSTALL NEW MANHOLE.
  - REMOVE AND REPLACE 8.0m OF WOOD FENCE.
  - REMOVE EXISTING FENCE, GRADE AND SOD YARD, CONSTRUCT NEW FENCE AND GATES, RECONSTRUCT PRIVATE SIDEWALK.
  - CONSTRUCT EXPOSED AGGREGATE CONCRETE.
  - INSTALL 100mm THICK CATCHBASIN SIDEWALL INSULATION.

- GENERAL NOTES:**
- PAVEMENT DIMENSIONS ARE TO BACK OF CURB.
  - CHAINAGE IS ALONG CENTRELINE OF NESS AVENUE PAVEMENT.



**WARNING**  
IF POWER EQUIPMENT OR EXPLOSIVES ARE TO BE USED FOR EXCAVATION ON THIS PROJECT THE CONTRACTOR MUST:  
1. NOTIFY THE GAS COMPANY OF THE PROPOSED LOCATION OF EXCAVATION.  
2. TAKE PRECAUTION TO AVOID DAMAGE TO GAS COMPANY INSTALLATIONS. SEE PROVINCIAL REGULATION 14092 FOR DETAILS.



LEGEND-PLAN	PROPOSED	EXISTING	LEGEND-PLAN	PROPOSED	EXISTING
150 WM	WATERMAIN	400 FM	SWALE	MANHOLE	RIGHT-OF-WAY
300 LDS	FEEDERMAIN	300 LDS	MANHOLE	CATCHBASIN	GAS
250 WWS	LAND DRAINAGE SEWER	250 WWS	MANHOLE	HYDRO BOX	HYDRO
300 CS	WASTEWATER SEWER	300 CS	MANHOLE	HYDRO POLE	MTS
200 FCM	COMBINED SEWER	200 FCM	MANHOLE	LIGHT STANDARD	DETECTABLE WARNING TILE
	FORCEMAIN		MANHOLE	ANCHOR	ELEVATION
	JUNCTIONS		MANHOLE	TREE	SIDEWALK
	HYDRANT		MANHOLE	ALUMINUM BALANCE BARRIER	CURB
	VALVE		MANHOLE	RETAINING WALL	ASPHALT
	CURB STOP		MANHOLE		CONCRETE
EXISTING	LEGEND-PLAN	PROPOSED	EXISTING	LEGEND-PLAN	PROPOSED

LOCATION APPROVED UNDERGROUND STRUCTURES		B.M. ELEV.
SUPV. U/G STRUCTURES	DATE	
COMMITTEE		
NOTE: LOCATION OF UNDERGROUND STRUCTURES AS SHOWN ARE BASED ON THE BEST INFORMATION AVAILABLE, BUT NO GUARANTEE IS GIVEN THAT ALL EXISTING UTILITIES ARE SHOWN OR THAT THE GIVEN LOCATIONS ARE EXACT. CONFIRMATION OF EXISTENCE AND EXACT LOCATION OF ALL SERVICES MUST BE OBTAINED FROM THE INDIVIDUAL UTILITIES BEFORE PROCEEDING WITH CONSTRUCTION.		

**TETRA TECH**

DESIGNED BY: GAC  
DRAWN BY: GMD  
CHECKED BY: GAC  
APPROVED BY: EFS

HOR. SCALE: 1 : 250  
VERTICAL: 1 : 10

DATE: 15.09.24  
BY: G.A.C.

**THE CITY OF WINNIPEG**  
PUBLIC WORKS DEPARTMENT  
ENGINEERING DIVISION

**G.A. CHURCHILL**  
REGISTERED PROFESSIONAL ENGINEER  
15.09.24  
25653

CONSULTANT DRAWING NO. 140070800-DWG-C0050

**NESS AVENUE AT STURGEON CREEK BRIDGE CONSTRUCTION**

NESS AVENUE RECONSTRUCTION  
12m E OF SCHOOL RD TO 42m W OF KIRBY DR  
STATION 2+00 TO STATION 3+40

CITY DRAWING NUMBER: P-3465-15-003  
SHEET 50 OF 64

95