

**1** DETAIL AT END POSTS  
1 : 2

**2** DETAIL AT INTERMEDIATE POSTS  
1 : 2

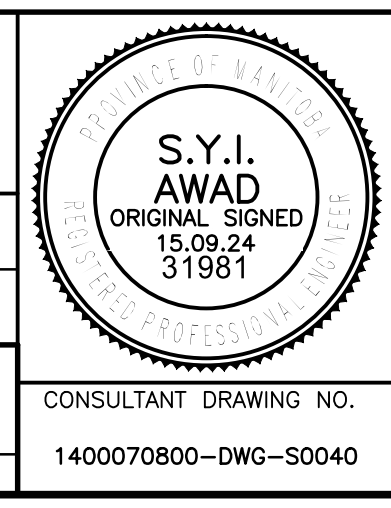
**3** HANDRAIL POST SECTION  
1 : 2

**4** TYPICAL POST DETAIL  
1 : 2  
- SHOWING SLOTS FOR RAIL SEATS



NO.	REVISIONS	DATE	BY
0	ISSUED FOR TENDER	15.09.24	S.A.

<b>TETRA TECH</b>	
DESIGNED BY D.M.	CHECKED BY S.A.
DRAWN BY G.I.	APPROVED BY E.F.S.
HOR. SCALE: AS NOTED	ACCEPTED BY DATE 15.09.24
VERTICAL: AS NOTED	ORIGINAL DRAWING SIGNED BY: D.N. BURMEY, P.ENG.
DATE 15.09.24	D.N. BURMEY, P.ENG. BRIDGE PROJECTS ENGINEER



<b>THE CITY OF WINNIPEG</b> PUBLIC WORKS DEPARTMENT ENGINEERING DIVISION	
NESS AVENUE AT STURGEON CREEK BRIDGE CONSTRUCTION	
ALUMINUM PEDESTRIAN HANDRAIL SECTIONS AND DETAILS	
B.M. ELEV.	CONSULTANT DRAWING NO. 1400070800-DWG-S0040
CITY DRAWING NUMBER <b>B243-15-040</b>	SHEET <b>40</b> OF <b>64</b>
<b>40</b>	